

# Gas filter GFK

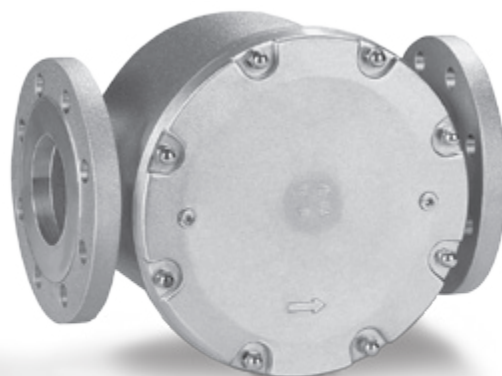
Product brochure · GB  
1.2.1.2 Edition 01.12



**krom**  
**schroder**



- For the protection of downstream devices against blockage
- Very high throughput
- High purification efficiency
- Long life
- Easy-to-replace filter pad
- EC type-tested and certified



**elster**  
Kromschroder



GFK..R

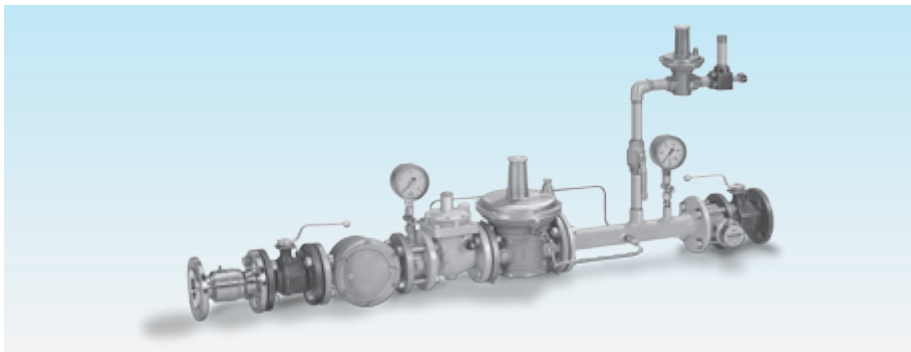


GFK..F

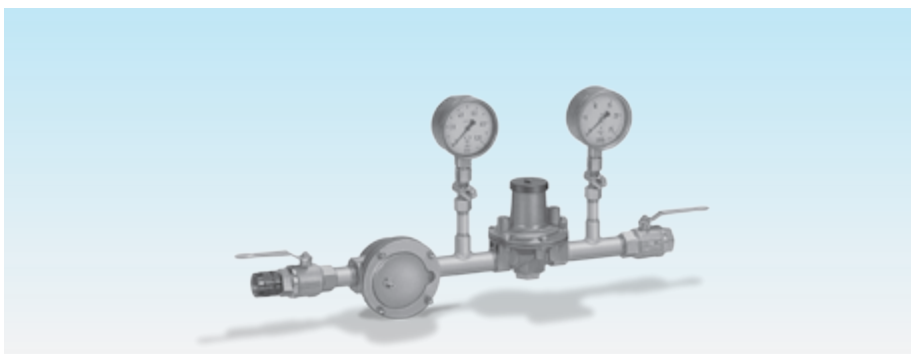
## Application

Suitable for filtration of the fuel gas and combustion air supply to all gas consuming appliances.

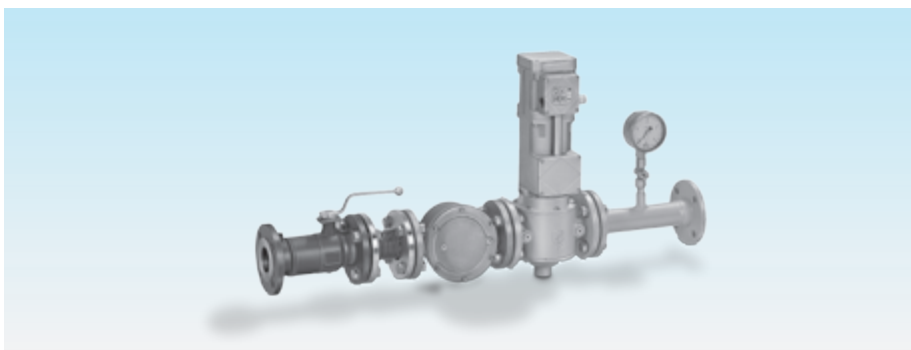
## Application examples



Gas pressure control system with GFK..F



Pressure control system with GFK..R



Main gas shut-off device with GFK..F

## Selection

### Standard-range

|          | 10 | 40 | 60 | -3 | -6 |
|----------|----|----|----|----|----|
| GFK 15R  | ●  | ●  |    |    | ●  |
| GFK 20R  | ●  | ●  |    |    | ●  |
| GFK 25R  | ●  | ●  |    |    | ●  |
| GFK 32R  | ●  | ●  |    |    | ●  |
| GFK 40R  | ●  | ●  |    |    | ●  |
| GFK 50R  | ●  | ●  |    |    | ●  |
| GFK 65R  | ●  | ●  |    |    | ●  |
| GFK 40F  | ●  |    | ●  |    | ●  |
| GFK 50F  | ●  |    | ●  |    | ●  |
| GFK 65F  | ●  |    | ●  |    | ●  |
| GFK 80F  | ●  |    | ●  |    | ●  |
| GFK 100F | ●  |    | ●  |    | ●  |
| GFK 125F | ●  |    |    | ●  |    |
| GFK 150F | ●  |    |    | ●  |    |
| GFK 200F | ●  |    |    | ●  |    |
| GFK 250F | ●  |    |    | ●  |    |

### Order example

GFK 32R10-6

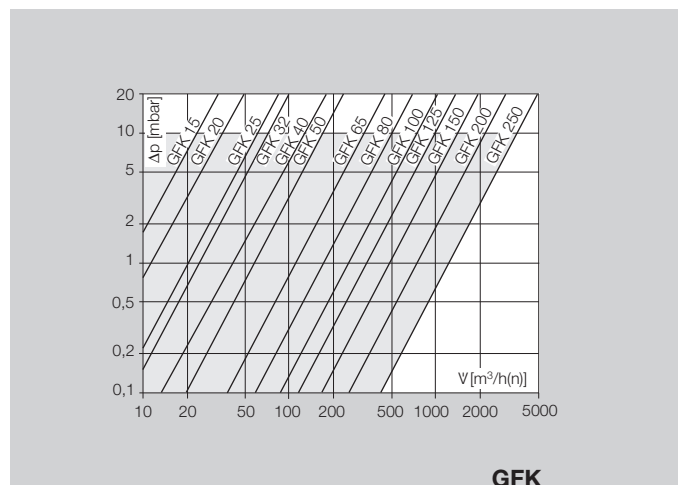
### T-Product range

|          | N | A | 40 | -3 |
|----------|---|---|----|----|
| GFK 15T  | ● |   | ●  | ●  |
| GFK 20T  | ● |   | ●  | ●  |
| GFK 25T  | ● |   | ●  | ●  |
| GFK 40T  | ● |   | ●  | ●  |
| GFK 50T  | ● | ● | ●  | ●  |
| GFK 65T  | ● | ● | ●  | ●  |
| GFK 80T  |   | ● | ●  | ●  |
| GFK 100T |   | ● | ●  | ●  |

### Order example

GFK 40TN40-3

## Flow rate



## Technical data

Gas type:  
natural gas, town gas, LPG (gaseous), biologically produced methane and air.

Max. inlet pressure  $p_e$ :  
1 bar GFK 15 to 250,  
4 bar (60 psig) GFK 15 to 65,  
GFK 15T to 100T,  
6 bar GFK 40 to 100.

Ambient temperature:  
-15 to +80°C (5 to 176°F).

Continuous operation at high temperatures accelerates the ageing of elastomer materials.

### Version to DIN 3386

#### Housing

GFK 15 to 100 made from AlSi.

GFK 125 to 250 made from sheet steel.

GFK..R: Rp internal thread connection to ISO 7-1.

GFK..F: flanged connection to ISO 7005, PN 16.

GFK..N: NPT internal thread.

GFK..A: ANSI 150 flanged connection.

Filter pad: polypropylene fleece (standard 50 µm).

#### Pressure test points on the cover

GFK 15 to 100:

Inlet side: Rp 1/8 pressure test nipple,

Outlet side: Rp 1/8 pressure test nipple.

GFK 125 to 250:

Inlet side: Rp 1/8 plug,

Outlet side: Rp 1/8 plug.

GFK 15T to 100T:

Inlet side: Rp 1/8 plug,

Outlet side: Rp 1/8 plug.

## Maintenance cycles

Change filter pad once per annum, twice per annum for biologically produced methane, or in case the pressure differential on the gas filter has risen by 100% compared to when new,  $\Delta p_{max} = 20$  mbar.