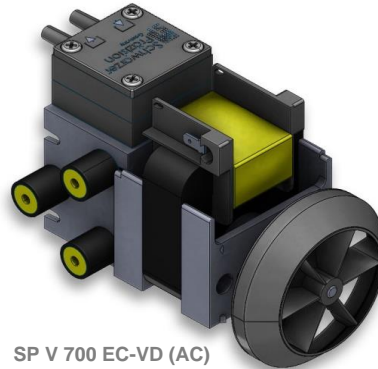


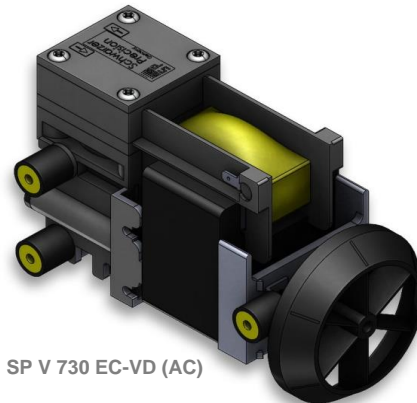
SP V 700 EC-VD (DC)



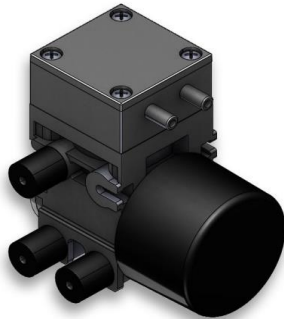
SP V 700 EC-VD (AC)



SP V 730 EC-VD (DC)



SP V 730 EC-VD (AC)



SP V 730 EC-BL-VD

## We care.

Customised Pumps - No Additional Costs!

### Product Features

- Miniature diaphragm pump for gases
- Applicable as vacuum or pressure pump
- High efficiency and available in common supply voltages
- Various drives available
- Low weight and small size
- Applicable for noise- and vibration-sensitive environments
- Installation in any mounting orientation allows simple device integration
- Leak-tight, oil-free and maintenance-free

### Application Examples

Particularly suitable for stationary devices such as:

- Gas analysers
- Anaesthesia monitoring
- Auto samplers
- Exhaust or flue gas analyzers
- Blood pressure monitoring
- Industrial pressure and vacuum
- Pipetting devices

and many more...

### Customisation

- We offer your customised precision pump without additional costs - even for small batches
- Our modular concept allows easy adaptations
- Outstanding quality - Made in Germany
- Excellent technical consultation and service by experts
- More than 40 years experience in pump applications
- Manifold mounting
- Fast delivery - order your sample now!





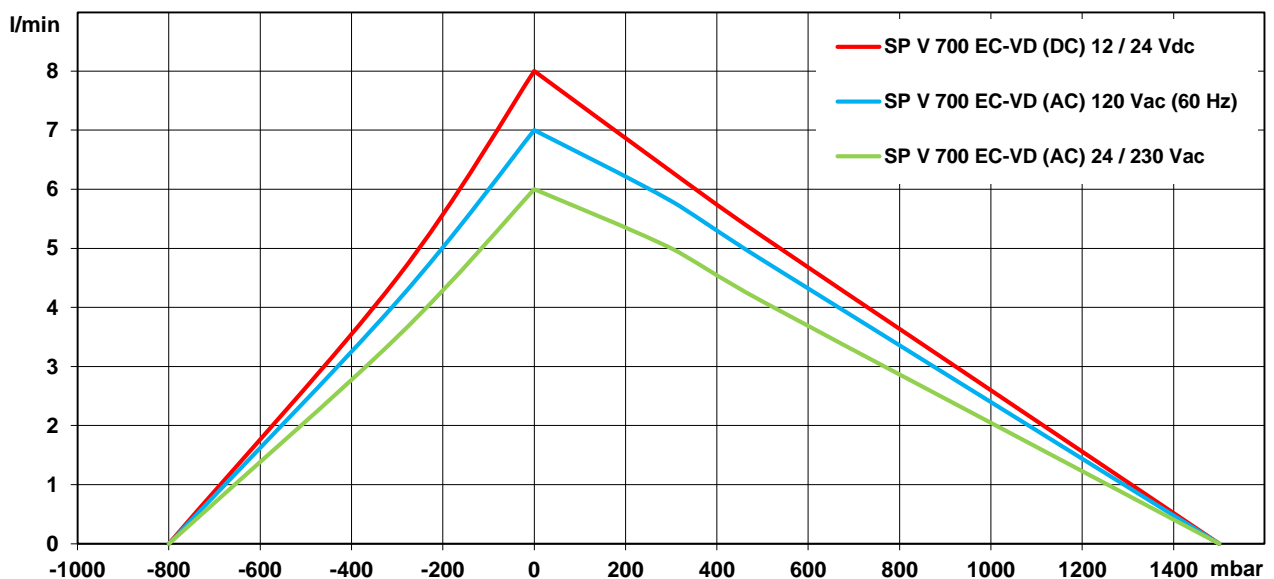
The pumps listed below represent a typical selection of our wide range of eccentric pumps and are intended for initial tests.

**Customised versions** for your individual application would be made without additional costs - please contact us!

All flow values given under norm conditions (according to DIN 1343). Optional materials can cause deviating performance values.

Designation		SP V 700 EC-VD (DC)		SP V 700 EC-VD (AC)		
Operating Voltage Art. No.		12 Vdc 7e53005	24 Vdc 7e53003	24 Vac (50-60 Hz) 7e53002	230 Vac (50 Hz) 7e53000	120 Vac (60 Hz) 7e53001
Pneumatic Performance						
Free Flow [l/min]		8.0	8.0	6.0	6.0	7.0
Pressure Side						
Flow at 300 mbar [l/min]		6.3	6.3	5.0	5.0	5.8
Flow at 500 mbar [l/min]		5.2	5.2	4.1	4.1	4.8
max. Pressure [mbar]		1500	1500	1500	1500	1500
Vacuum Side						
Flow at -300 mbar [l/min]		4.5	4.5	3.5	3.5	4.1
max. Vacuum [mbar]		-800	-800	-800	-800	-800
Motor / Power Consumption						
Standard Motor Type		iron core / ball bearings		shaded pole / ball bearings		
max. Nominal Current [mA]		800	500	3200	330	740
Power consumption [W]		-	-	38 @ 50Hz	37	46
Optional Motor Type		-		-		
Construction						
Pump Head	standard			PPS		
	optional			Nylon		
Diaphragm	standard			FKM		
	optional			EPDM		
Valves	standard			FKM		
	optional			-		
Weight [g]		574		1020		

## Performance Curves





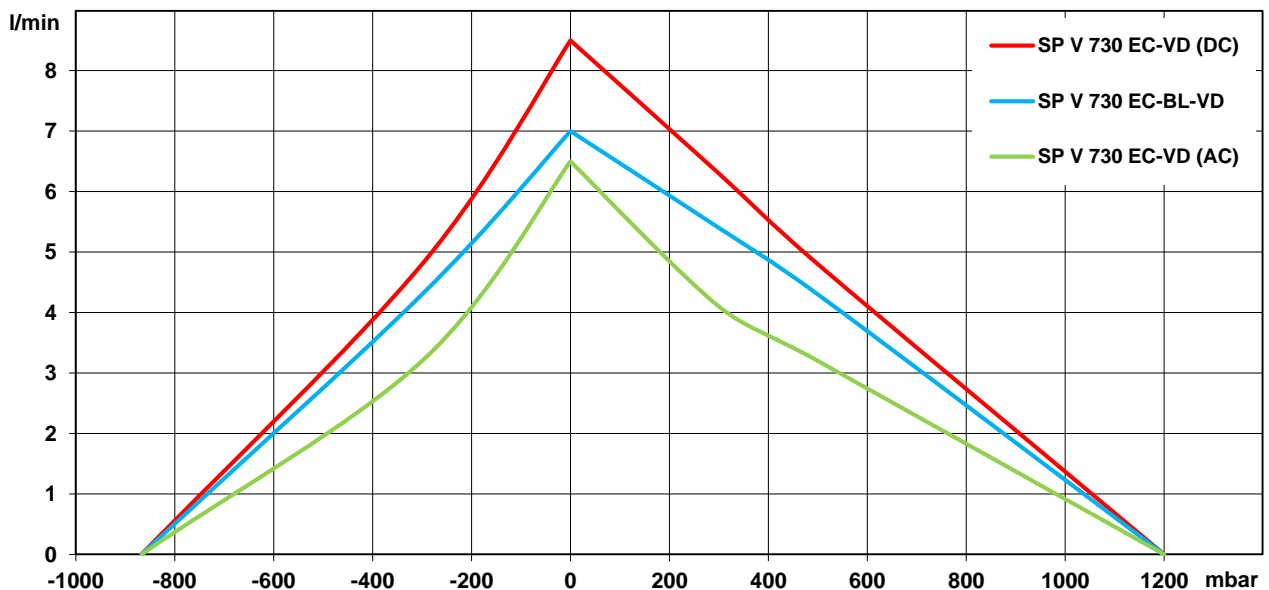
The pumps listed below represent a typical selection of our wide range of eccentric pumps and are intended for initial tests.

**Customised versions** for your individual application would be made without additional costs - please contact us!

All flow values given under norm conditions (according to DIN 1343). Optional materials can cause deviating performance values.

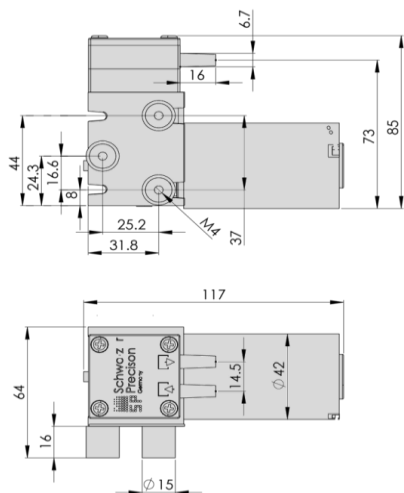
Designation	SP V 730 EC-VD (DC)		SP V 730 EC-BL-VD		SP V 730 EC-VD (AC)		
Operating Voltage Art. No.	12 Vdc 7e53044	24 Vdc 7e53045	12 Vdc 7e53028	24 Vdc 7e53029	24 V (50-60 Hz) 7e53046	120 V (60 Hz) 7e53047	230 V (50 Hz) 7e53048
Pneumatic Performance							
Free Flow [l/min]	8.5	8.5	7.0	7.0	6.5	6.5	6.5
Pressure Side							
Flow at 300 mbar [l/min]	6.3	6.3	5.4	5.4	4.1	4.1	4.1
Flow at 500 mbar [l/min]	4.8	4.8	4.3	4.3	3.2	3.2	3.2
max. Pressure [mbar]	1200	1200	1200	1200	1200	1200	1200
Vacuum Side							
Flow at -300 mbar [l/min]	4.8	4.8	4.3	4.3	3.2	3.2	3.2
max. Vacuum [mbar]	-867	-867	-867	-867	-867	-867	-867
Motor / Power Consumption							
Standard Motor Type	iron core / ball bearings		brushless, analog contr. / bb		shaded pole / ball bearings		
Current at Run [mA]	700	400	600	400	n/a	n/a	300
Current at Start [mA]	1300	700	1200	900	n/a	n/a	n/a
Power Consumption [W]	-	-	-	-	n/a	n/a	66
Optional Motor Type	-		-		-		
Construction							
Pump Head							
standard							
optional							
Diaphragm, Valves							
standard							
optional							
IP-Protection	IP 20		IP 30		IP 00		
Insulation Class	Class E		Class E		Class B		
Thermal Switch	-		-		120°C		
Weight [g]	580		460		960		

## Performance Curves



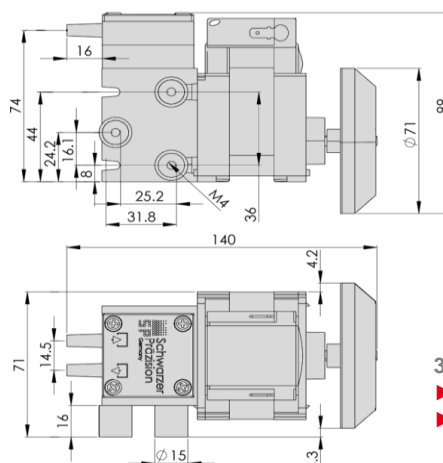


## SP V 700 EC-VD (DC)



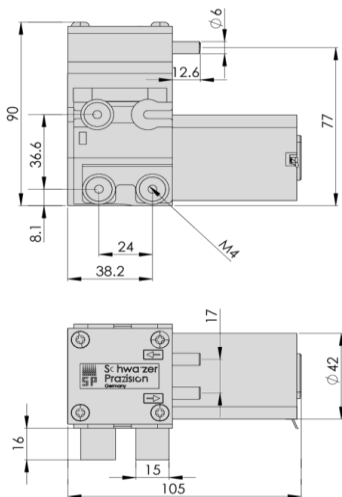
3D CAD Data:  
 ► Download STEP  
 ► Download IGES

## SP V 700 EC-VD (AC)



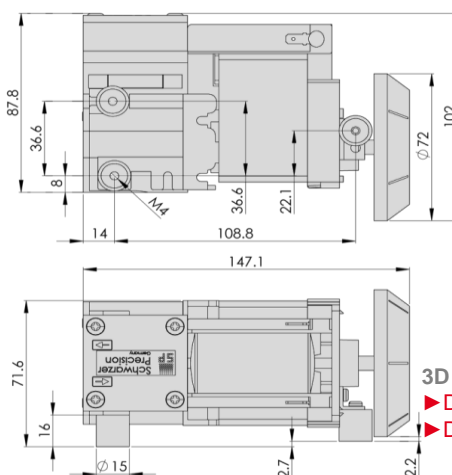
3D CAD Data:  
 ► Download STEP  
 ► Download IGES

## SP V 730 EC-VD (DC)



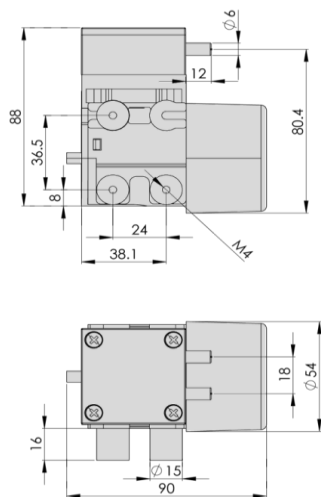
3D CAD Data:  
 ► Download STEP  
 ► Download IGES

## SP V 730 EC-VD (AC)



3D CAD Data:  
 ► Download STEP  
 ► Download IGES

## SP V 730 EC-BL-VD



3D CAD Data:  
 ► Download STEP  
 ► Download IGES

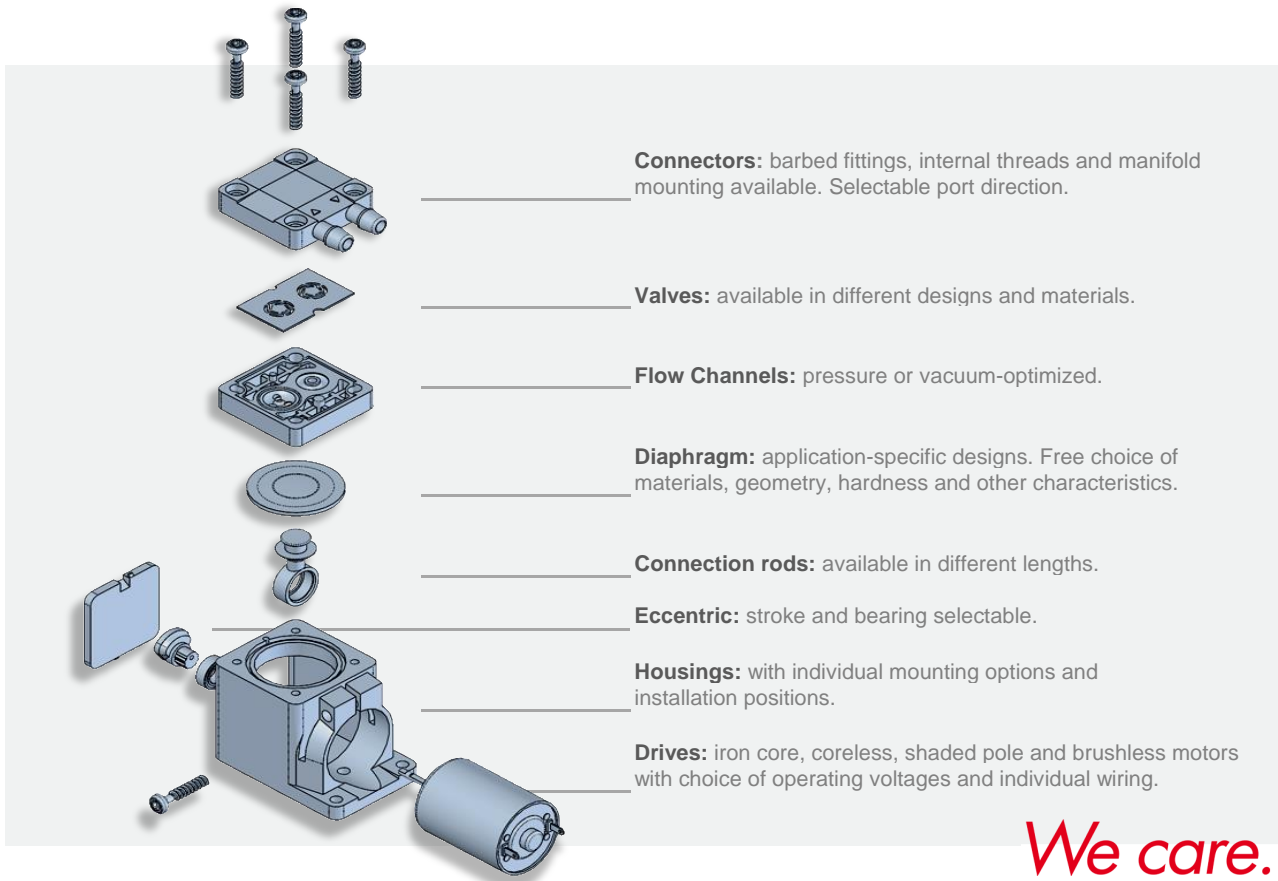
Standard: connection ports as shown  
 Optional: 3 other port positions possible

You can also download the 3D CAD data on the SP website:  
 ► [www.schwarzer.com/download](http://www.schwarzer.com/download)



### Customising Examples

Customising without compromises is extremely important to us. We develop precision pumps in direct collaboration with our customers - with all parameters exactly adapted to the respective application. Thanks to the modular pump design, this is done without added development-related costs! We develop the ideal pump for you. Uncompromising and reliable.



### Installation Notes

In order to minimise noise and vibration we recommend securing the pump in one of the following ways:

- with rubber mounting (see "Accessories")
- with padded double sided adhesive tape
- with Velcro (hook and loop) tape for easy assembly and service
- Put the pump in a box lined with foam. Motor wires and tubing for the pump can lead through a hole in the side of the box.

### Accessories

Schwarzer Precision offers a comprehensive portfolio of pump accessories such as:

- mountings
- silencers + filters
- electronics
- check valves + pressure switches