

SERIES V Champion for extreme loads

The very robust design of the Series V allows extremely high mechanical and electrical (Heat) loads, which occur particular in machines very short cycle times. Fields of application are e.g.: Table vibration of block making and pipe machines, shakeout machines or vibrating beams.

Options:

- Power supply: 42 – 690 V
- Thermistor protection PTC 120°
- Individual color
- Other Temperature range
- Coupling of vibrators (Page 15)

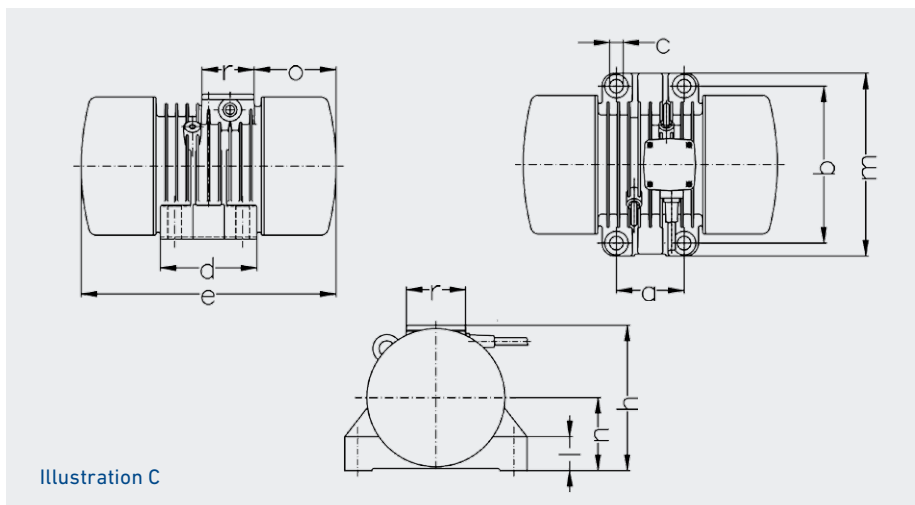


Illustration C

3000 U/min				400 V / 50 Hz															
Type	Centrif. force N	Work.mom. kgcm	Power W	Current A	Dimensions in mm												Fig.	Weight kg	ID.-No
					a	b	c	d	e	h	l	m	n	o	r				
VZ 170	17000	33,7	1800	3,40	120	246	26	198	433	245	50	300	117	212	100	C	70,0	514055	
VZ 200	20000	40,0	1800	3,40	120	246	26	198	433	245	50	300	117	212	100	C	71,5	514021	
VZ 250	25000	50,0	2500	4,30	130	300	26	185	428	278	65	350	140	251	100	C	90,0	514024	
VZ 300	30000	60,0	2500	4,30	130	300	26	185	428	278	65	350	140	251	100	C	92,0	514025	
VZ 350	35000	70,0	3000	5,20	130	300	26	185	428	278	65	350	140	251	100	C	94,0	516243	
VZ 400	40000	80,0	3000	5,20	130	300	26	185	428	278	65	350	140	251	100	C	96,0	514927	
VZ 500	50000	102,0	3000	5,40	130	300	26	185	428	278	65	350	140	251	100	C	98,0	516423	
VZ 600	60000	120,0	3000	5,60	130	300	26	185	428	278	65	350	140	251	100	C	100,0	516283	

3600 U/min				460 V / 60 Hz														
Type	Centrif. force N	Work.mom. kgcm	Power W	Current A	Dimensions in mm											Fig.	Weight kg	ID.-No
					a	b	c	d	e	h	l	m	n	o	r			
VZ 170	17000	23,4	1800	3,00	120	246	26	198	433	245	50	300	117	212	100	C	70,0	614055
VZ 200	20000	27,7	1800	3,00	120	246	26	198	433	245	50	300	117	212	100	C	71,5	614021
VZ 250	25000	34,7	2500	3,80	130	300	26	185	428	278	65	350	140	251	100	C	90,0	614024
VZ 300	30000	41,6	2500	3,80	130	300	26	185	428	278	65	350	140	251	100	C	92,0	614025
VZ 350	35000	48,6	3000	4,58	130	300	26	185	428	278	65	350	140	251	100	C	94,0	616243
VZ 400	40000	55,5	3000	4,58	130	300	26	185	428	278	65	350	140	251	100	C	96,0	614927
VZ 500	50000	70,8	3000	4,58	130	300	26	185	428	278	65	350	140	251	100	C	98,0	616423
VZ 600	60000	83,3	3000	4,93	130	300	26	185	428	278	65	350	140	251	100	C	100,0	616283

1500 U/min				400 V / 50 Hz															
Type	Centrif. force N	Work.mom. kgcm	Power W	Current A	Dimensions in mm												Fig.	Weight kg	ID.-No
					a	b	c	d	e	h	l	m	n	o	r				
VV 170	17000	135,1	1800	3,70	120	246	26	198	433	245	50	300	117	212	100	C	80,0	514056	
VV 210	21000	167,0	1800	3,70	120	246	26	198	477	245	50	300	117	234	100	C	83,0	514041	
VV 250	25000	198,7	2600	5,40	130	300	26	185	488	278	65	350	140	281	100	C	105,0	514044	
VV 320	32000	254,0	2600	5,40	130	300	26	185	488	278	65	350	140	281	100	C	111,0	514045	

1800 U/min				460 V / 60 Hz														
Type	Centrif. force N	Work.mom. kgcm	Power W	Current A	Dimensions in mm											Fig.	Weight kg	ID.-No
					a	b	c	d	e	h	l	m	n	o	r			
VV 170	17000	93,8	1800	3,26	120	246	26	198	433	245	50	300	117	212	100	C	79,0	514472
VV 21	21000	115,9	1800	3,26	120	246	26	198	477	245	50	300	117	234	100	C	82,0	514043
VV 250	25000	137,9	2600	4,76	130	300	26	185	488	278	65	350	140	281	100	C	104,0	614044
VV 320	32000	176,3	2600	4,76	130	300	26	185	488	278	65	350	140	281	100	C	111,0	514048

1000 U/min				400 V / 50 Hz															
Type	Centrif. force N	Work.mom. kgcm	Power W	Current A	Dimensions in mm												Fig.	Weight kg	ID.-No
					a	b	c	d	e	h	l	m	n	o	r				
VS 140	14000	250,5	1400	3,20	120	246	26	198	553	245	50	300	117	272	100	C	94,0	514057	
VS 170	17000	305,0	1400	3,20	120	246	26	198	613	245	50	300	117	302	100	C	102,0	514384	
VS 200	20000	355,8	2000	4,00	130	300	26	185	552	278	65	350	140	312	100	C	123,0	514064	
VS 250	25000	445,0	2000	4,00	130	300	26	185	621	278	65	350	140	347	100	C	133,0	514065	

1200 U/min					460 V / 60 Hz													
Type	Centrif. force N	Work.mom. kgcm	Power W	Current A	Dimensions in mm											Fig.	Weight kg	ID.-No
					a	b	c	d	e	h	l	m	n	o	r			
VS 140	14000	173,6	1400	2,82	120	246	26	198	553	245	50	300	117	272	100	C	92,0	614057
VS 170	17000	211,8	1400	2,82	120	246	26	198	613	245	50	300	117	302	100	C	100,0	614384
VS 200	20000	247,0	2000	3,52	130	300	26	185	552	278	65	350	140	312	100	C	121,0	614064
VS 250	25000	309,0	2000	3,52	130	300	26	185	621	278	65	350	140	347	100	C	131,0	614065