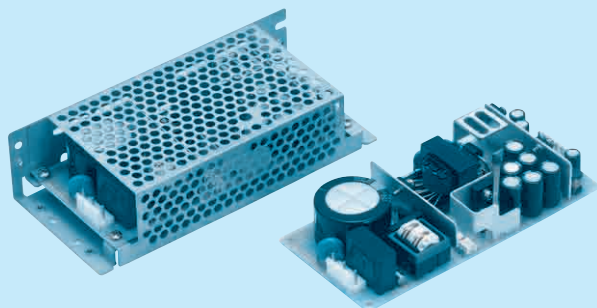


LDC30F

LD C 30 F -1 -□

① ② ③ ④ ⑤ ⑥



- ① Series name
- ② Multiple output
- ③ Output wattage
- ④ Universal input
- ⑤ Output voltage combination
- ⑥ Optional *4
C :with Coating
G :Low leakage current
S :with Chassis
SN:with Chassis & cover
Y :with Potentiometer

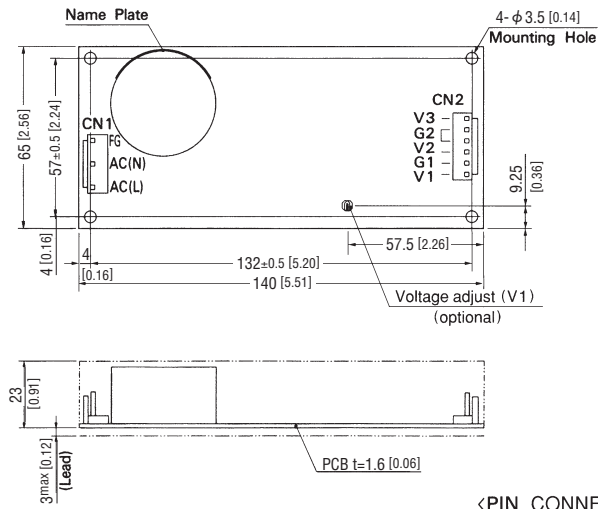
MODEL	LDC30F-1	LDC30F-2
DC OUTPUT	V1 +5V 3.0(Peak 4.5)A V2 +12V 1.2(Peak 2.0)A V3 -12V 0.3(Peak 0.45)A	+5V 3.0(Peak 4.5)A +15V 1.0(Peak 2.0)A -15V 0.3(Peak 0.45)A

SPECIFICATIONS

	MODEL	LDC30F-1	LDC30F-2						
INPUT	VOLTAGE[V]	AC85 - 264 1 φ or DC110 - 370							
	CURRENT[A]	ACIN 100V	0.8typ (Io=100%)						
	FREQUENCY[Hz]		47 - 440 or DC						
	EFFICIENCY[%]	ACIN 100V	72typ (Io=100%)						
	INRUSH CURRENT[A]	ACIN 100V	25typ (Io=100%) (At cold start)						
		ACIN 200V	50typ (Io=100%) (At cold start)						
	LEAKAGE CURRENT[mA]	0.75max (60Hz, According to UL, CSA, VDE and DEN-AN)							
OUTPUT	VOLTAGE[V]	+5	+12	-12	+5	+15	-15		
	CURRENT[A]	*1	0 - 3.0 (Peak 4.5)	0 - 1.2 (Peak 2.0)	0 - 0.3 (Peak 0.45)	0 - 3.0 (Peak 4.5)	0 - 1.0 (Peak 2.0)	0 - 0.3 (Peak 0.45)	
	LINE REGULATION[mV]		20max	48max	48max	20max	60max	60max	
	LOAD REGULATION[mV]		100max	120max	150max	100max	120max	150max	
	RIPPLE[mVp-p]	0 to +50℃ *2	100max	120max	120max	100max	120max	120max	
		-10 - 0℃ *2	150max	160max	160max	150max	160max	160max	
	RIPPLE NOISE[mVp-p]	0 to +50℃ *2	120max	150max	150max	120max	150max	150max	
		-10 - 0℃ *2	170max	180max	180max	170max	180max	180max	
	TEMPERATURE REGULATION[mV]	0 to +50℃	50max	350max	350max	50max	350max	350max	
		-10 to +50℃	60max	420max	420max	60max	420max	420max	
	DRIFT[mV]	*3	20max	——	——	20max	——	——	
	START-UP TIME[ms]		100max (ACIN 85V, Io=100%)						
	HOLD-UP TIME[ms]		10typ (ACIN 85V, Io=100%), 20typ (ACIN 100V, Io=100%), 100typ (ACIN 200V, Io=100%)						
OUTPUT VOLTAGE ADJUSTMENT RANGE[V]		Fixed	Fixed	Fixed	Fixed	Fixed	Fixed		
OUTPUT VOLTAGE SETTING[V]		4.9 to 5.3	11.4 to 12.6	-11.4 to -12.6	4.9 to 5.3	14.25 to 15.75	-14.25 to -15.75		
PROTECTION CIRCUIT AND OTHERS	OVERCURRENT PROTECTION	Works over 105% of rating and recovers automatically							
	OVERVOLTAGE PROTECTION	Works at 115 - 140% of rating (+5V only)							
	OPERATING INDICATION	Not provided							
	REMOTE SENSING	Not provided							
	REMOTE ON/OFF	Not provided							
ISOLATION	INPUT-OUTPUT	AC3.000V 1minute, Cutoff current = 10mA, DC500V 50MΩ min (At Room Temperature)							
	INPUT-FG	AC2.000V 1minute, Cutoff current = 10mA, DC500V 50MΩ min (At Room Temperature)							
	OUTPUT-FG	AC500V 1minute, Cutoff current = 100mA, DC500V 50MΩ min (At Room Temperature)							
	OUTPUT-OUTPUT(V1-V2,V3)	AC100V 1minute, Cutoff current = 100mA, DC100V 10MΩ min (At Room Temperature)							
ENVIRONMENT	OPERATING TEMP.,HUMID.AND ALTITUDE	-10 to +60℃, 20 - 90%RH (Non condensing) (Refer to DERATING CURVE), 3,000m (10,000feet)							
	STORAGE TEMP.,HUMID.AND ALTITUDE	-20 to +75℃, 20 - 90%RH (Non condensing), 9,000m (30,000feet)							
	VIBRATION	10 - 55Hz, 19.6m/s ² (2G), 3minutes period, 60minutes each along X, Y and Z axis							
	IMPACT	196.1m/s ² (20G), 11ms, once each X, Y and Z axis							
SAFETY AND NOISE REGULATIONS	AGENCY APPROVALS	UL60950-1, EN60950-1, EN50178, CSA C22.2 No.60950-1 Complies with DEN-AN and IEC60950-1							
	CONDUCTED NOISE	Complies with FCC-B, CISPR22-B, EN55022-B, VCCI-B							
OTHERS	CASE SIZE/WEIGHT	65×26×140mm [2.56×1.02×5.51 inches] (W×H×D) / 220g max (with chassis & cover : 400g max)							
	COOLING METHOD	Convection							

- *1 Peak load for 10sec. or less is acceptable if the total wattage is less than the rated wattage(-1: 33W, -2: 34.5W).When the load of +5V is OA, other output can be drawn by 80% of rated current.
- *2 Measured by 20MHz oscilloscope or Ripple-Noise meter (equivalent to KEISOKU-GIKEN:RM101).
- *3 Drift is the change in DC output for an eight hour period after a half-hour warm-up at 25°C with the input voltage held constant at the rated input/output.
- *4 Please contact us about safety approvals for the model with option.
- * Avoid prolonged use under over-load.
- * Derating is required when operated with chassis and cover.

External view



I/O Connector		Mating Connector	Terminal
CN1	B3P5-VH	VHR-5N	Chain:SVH-21T-P1.1
			Loose:BVH-21T-P1.1
CN2	B6P-VH	VHR-6N	Chain:SVH-21T-P1.1
			Loose:BVH-21T-P1.1

(Mfr : J.S.T.)

(Mfr : J.S.T.)

<PIN CONNECTION>

Pin No.	Input
1	AC(L)
2	
3	AC(N)
4	
5	FG

CN2

Pin No.	Output
1	V3
2	G2
3	G2
4	V2
5	G1
6	V1

※ Weight: 220g max (with chassis & cover : 400g max)

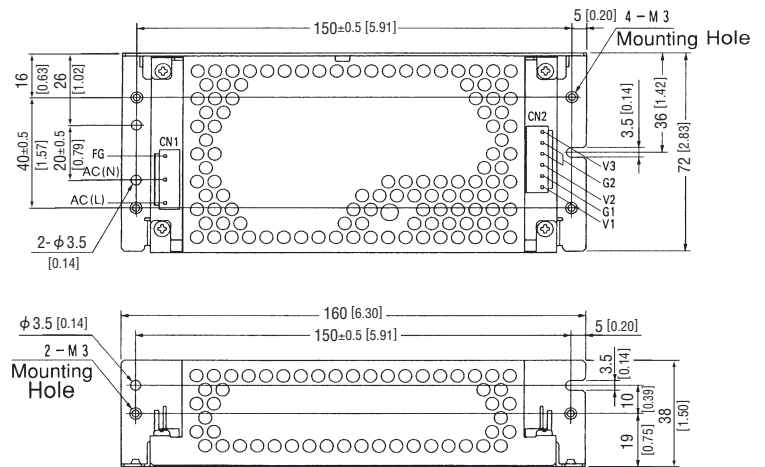
※ Tolerance: ± 1 [± 0.04]

※ Dimensions in mm, [] =inches

※ PCB Material: Glass composite (CEM3)

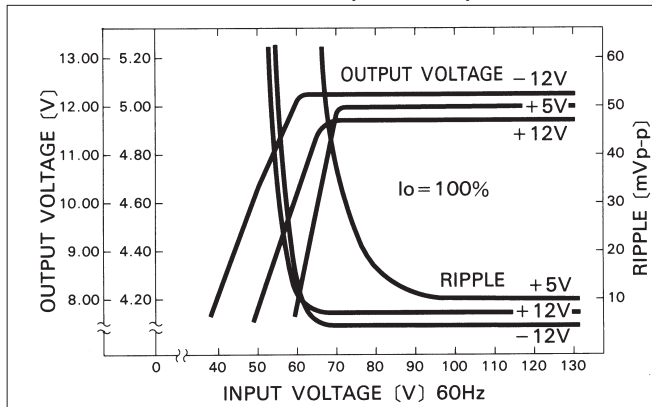
※ Chassis and cover is optional.

※ Mounting torque: 0.6N·m (6.3kgf·cm) max

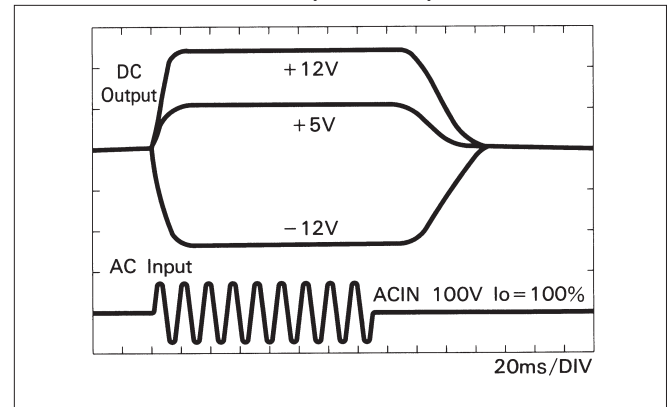


Performance data

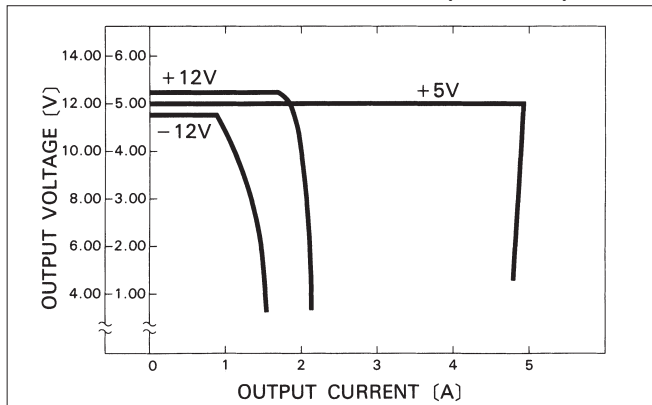
■STATIC CHARACTERISTICS (LDC30F-1)



■RISE TIME & FALL TIME (LDC30F-1)



OVERCURRENT CHARACTERISTICS (LDC30F-1)



■ DERATING CURVE

