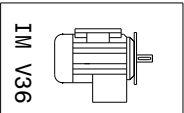
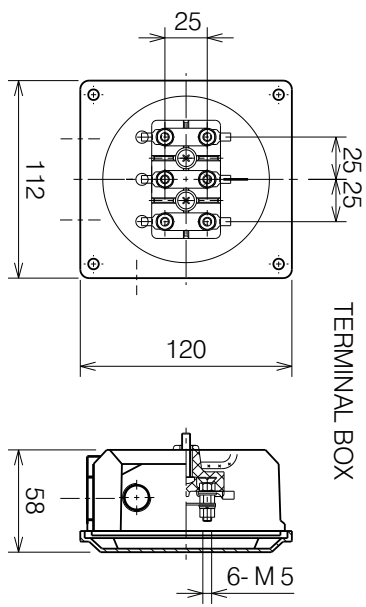
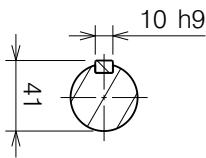
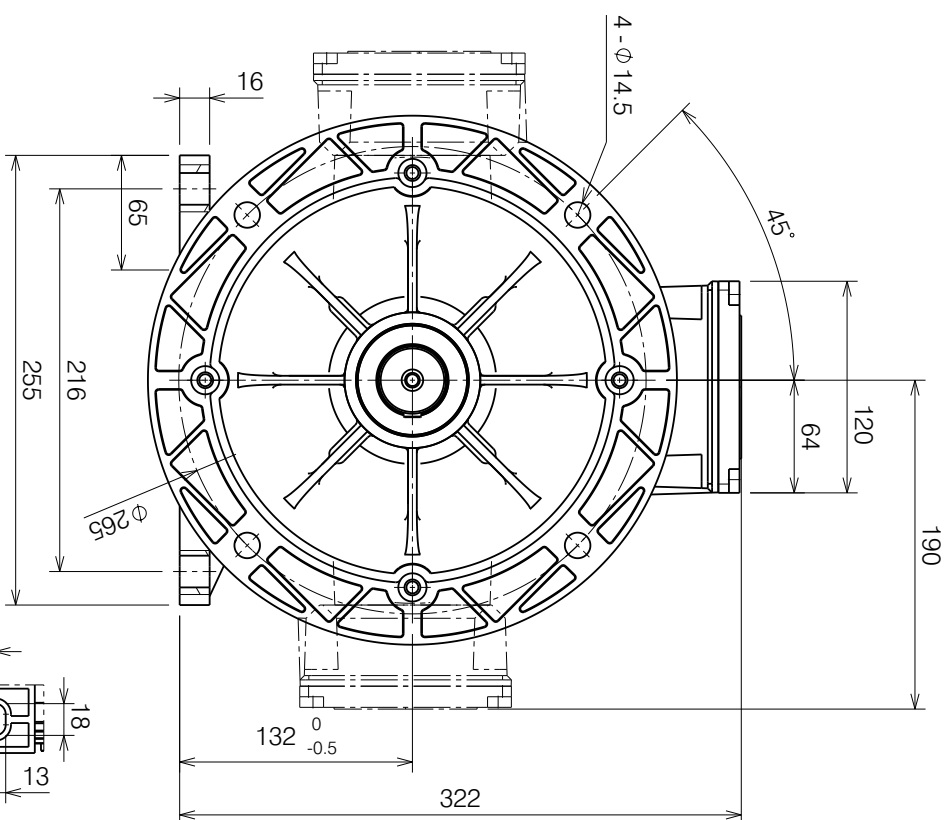
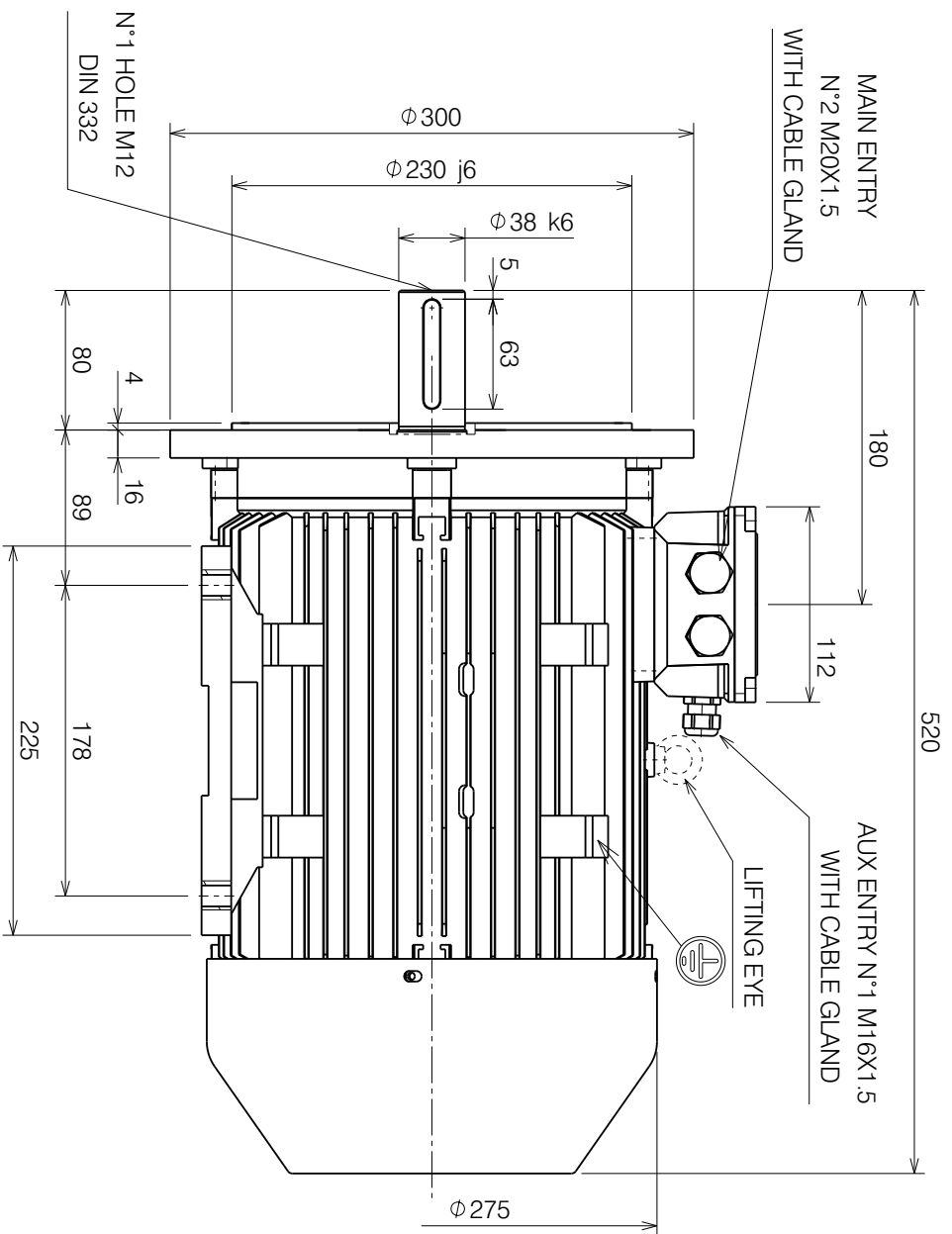

 MarelliMotori <small>Powering the future®</small>	TECHNICAL DATASHEET THREE-PHASE INDUCTION MOTOR - SQUIRREL CAGE			
	Our Reference -		Date August 22, 2024	
	Customer -		Rev. -	
MOTOR TYPE - TIPO MOTORE			A1C 132 MA4	
RATED OUTPUT - POTENZA NOMINALE		kW	7.5	
EFFICIENCY CLASS - CLASSE DI EFFICIENZA			IE1	
DUTY - SERVIZIO			S1	
RATED VOLTAGE - TENSIONE NOMINALE		V	400	
PHASES CONNECTION - COLLEGAMENTO DELLE FASI			Star	
RATED FREQUENCY - FREQUENZA NOMINALE		Hz	50.0	
RATED CURRENT - CORRENTE NOMINALE		A	14.99	
RATED SPEED - VELOCITA' NOMINALE		rpm	1440	
MOUNTING - FORMA COSTRUTTIVA		IM	B35	
EXECUTION - ESECUZIONE			TEFC	
PROTECTION DEGREE - GRADO DI PROTEZIONE		IP	55	
COOLING METHOD - TIPO DI RAFFREDDAMENTO		IC	411	
MOMENT OF INERTIA - MOMENTO DI INERZIA		kgm ²	0.0345	
AMBIENT TEMPERATURE - TEMPERATURA AMBIENTE		°C	-20 / +40	
SITE ALTITUDE - ALTEZZA DI INSTALLAZIONE		m	1000	
MARINE CLASSIFICATION - REGISTRO NAVALE			-	
INSULATION CLASS - CLASSE DI ISOLAMENTO			F	
TEMPERATURE RISE - SOVRATEMPERATURA			B	
APPLICABLE STANDARDS - NORME APPLICABILI			IEC 60034-1	
PARTIAL LOAD DATA - PERCENTUALE DI CARICO		%	100	75 50
EFFICIENCY - RENDIMENTO		%	87.0	- -
POWER FACTOR - FATTORE DI POTENZA			0.83	- -
HEAT LOSSES TO AIR - PERDITE SULL'ARIA		kW	1.1	
TORQUE - COPPIA	FULL LOAD - COPPIA	Nm	49.74	
	LOCKED ROTOR - SPUNTO	p.u.	2.0	
	PULL OUT - MASSIMA	p.u.	2.3	
LOCKED ROTOR CURRENT - CORRENTE DI CORTO CIRCUITO		p.u.	7.0	
STARTING METHOD - AVVIAMENTO			DOL	
THERMAL PROTECTIONS - PROTEZIONI TERMICHE	WINDINGS - AVVOLGIMENTI		-	
	BEARINGS - CUSCINETTI		-	
HEATING ELEMENTS - SCALDIGLIE ANTICONDENSA		V / W	-	
BEARING TYPE - TIPO CUSCINETTI	D-end - L.A.		6308-ZZ	
	N-end - L.O.		6308-ZZ	
LUBRICATION - LUBRIFICAZIONE	TIPO		-	
	INTERVALLO		-	
DIRECTION OF ROTATION - DIREZIONE DI ROTAZIONE			CW or CCW	
NO LOAD NOISE - RUMOROSITA' A VUOTO (*)		dB(A)	66	
WEIGHT - PESO		kg	49	
VIBRATION LEVEL - INTENSITA' DI VIBRAZIONE			A	
PAINTING - VERNICIATURA			RAL 5010	

(*) Motor fed by main, tolerance +3dB(A) - Motore alimentato da rete, tolleranza +3dB(A)

db version: 04-2024

PRELIMINARY



B		ADDED CONSTRUCTION TYPE		A.Rizzito		I.Graizzaro		L.De Stefano		17/05/2019	
A		ADDED MISSING DIMENSION		G.Sartori		I.Graizzaro		L.De Stefano		09/04/2019	
=		FIRST ISSUE		A.Rizzito		I.Graizzaro		L.De Stefano		05/04/2019	
REV				DESCRIPTION		PREP.D		CHKD		APPR.D DATE	
ECO:		HEAT TREATMENT:		MAT:				IND. ENG. CHKD:			
JOB:		SURFACE TREATMENT:		RAW MAT CODE:							
MarelliMotori Inspired solutions		DIMENSIONS WITHOUT TOLERANCES PRECISION DEGREE: (IN F 3651)				DIMENSION: mm		WEIGHT (kg):		ATEX APPR.D:	
						SCALE: /					
				A3		n/a					
		A1C/A2C 132 MA-MB B35				A13AD207B		B		SHEET: 1	
								Rev		OF: 1	
<p>This document is the property of Marelli Motori S.p.A. No part of this document may be copied or reproduced in any way. This information is subject to constant review.</p> <p>Mass variations or printed drawings are not allowed; any missed dimension or information on the drawing must be pointed out to MarelliMotoring.</p>											