

Alpha ALS Series Flameproof Valve Monitor

The ALS600 series flameproof valve monitor is a rotary position indication device in HAZARDOUS area(Ex d IIC T6). Armed with mechanical switch, inductive or magnet sensors this device can senses mechanical position (on/off) of the valve for remote PLC or PC indication. The visual indicator on the top of the device can also clearly display the valve position for local detection.

sira
CERTIFICATION

QA Notification No: **SIRA 12 ATEX M526**
Notified Body No: **0518 for Annexes IV and VII**



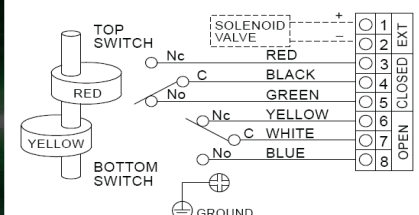
EC-Type Examination Certificate Number: **DNV 09 ATEX 72779X**
Notified Body No: **0575**



APPROVED BY:

SPECIFICATIONS AND TECHNICAL DATA

- **Enclosure:** Stainless steel 304 or 316.
Resistance to corrosion of chemicals and salty fog: O-ring sealed
- **O-rings:** Buna N
- **Environment:** NEMA 4,4X,7,8 IP66
- **Area Classification:** Class 1, Div.1&2, Groups C and D, Ex d IIB T6
- **Fasteners:** Stainless steel
- **Shaft:** Stainless steel Namur
- **Conduit Entries:** Two 3/4" NPT
Also available with two 1/2" or 3/4" BSP, 1/2" NPT, M20-1.5
- **Sensor (M2):** 2 SPDT CROUZET
Mechanical Switches 15A125-250 VAC
- **Terminal Strip Contacts:** 8~10
- **Mounting Bracket:** MB - 3.3: 30 x 80, 130 H:20, 30 (Carbon steel), option Stainless Steel
- **Temperature Rating:** -25C-85C



■ **DIMENSIONS**

