

Logic element, flow control with external pilot Common cavity, Size 10

VLSC-10A

04.84.02 - X - 85 - Z

RE 18321-68

Edition: 05.2017

Replaces: 03.2016



Description

When pressure at 1 rises above the selected spring bias pressure against the spool, the valve shifts to block flow from 2 to 1. Pilot pressure at 3 is additive to the spring bias pressure. The valve may be used in switching or compensation type applications, and will maintain a constant pressure drop across a fixed (or variable) orifice downstream of 1 when installed and piloted per the diagram above.

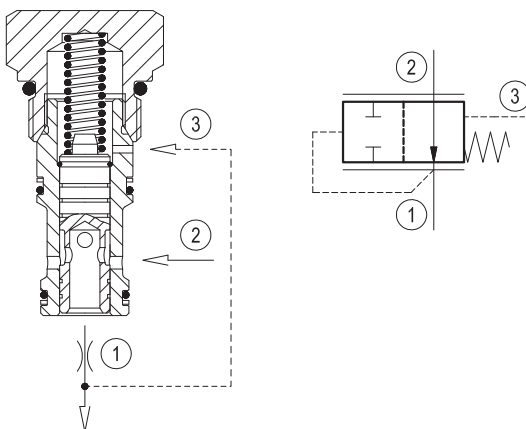
Technical data

Max. operating pressure	350 bar (5000 psi)
Max. Flow	30 l/min (8 gpm)
Max. internal leakage ¹⁾	50 cm ³ /min. (3 cu.in./min.)
Fluid temperature range	-30 to 100 °C (-22 to 212 °F)
Installation torque	41 - 47 Nm (30 - 35 ft-lbs)
Weight ²⁾	0.12 kg (0.27 lbs)
Cavity	CA-10A-3C (see data sheet 18325-70)
Lines bodies and standard assemblies	Please refer to section "Hydraulic integrated circuit" or consult factory
Seal kit ³⁾	Code: RG10A9010520100 material no: R901111367
Fluids	Mineral-based or synthetics with lubricating properties at viscosities of 10 to 500 mm ² /s (cSt)
Recommended degree of fluid contamination	Nominal value max. 10µm (NAS 8) / ISO 4406 19/17/14
Installation position	No restrictions
Other Technical Data	See data sheet 18350-50

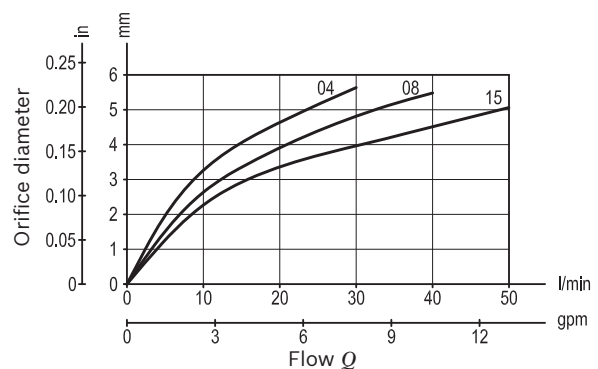
1) Measured at 200 bar (2900 psi)

2) Standard version X=00 type

3) Only external seals for 10 valves



Characteristic curve



Ordering code

04.84.02	X	85	Z	00	*
----------	---	----	---	----	---

Logic element, flow control with external pilot

Series 0/A to L
unchanged performances and dimensions

Version and options standard

Adjustaments

- 00 Fixed setting
- 03 Leakproof hex. socket screw

85 Common cavity, Size 10

		SPRINGS		
		Std. setting bar (psi)	Pressure increase bar/turn (psi/turn)	Bias spring bar (psi)
for X= 00	04	-	-	4 (60) ± 20%
	08	-	-	8 (115) ± 15%
	15	-	-	15 (218) ± 15%
for X= 03	00	4 (60)	1 (15)	2-8 (30-115)

Note: Special settings available. Contact factory authorized representative for ordering code.

Preferred types

Type	Material number
04840200850400A	R901109874
04840200850800A	R901109875
048402008515000	R930001018
04840203850000A	R901109876

Type	Material number

Dimensions

