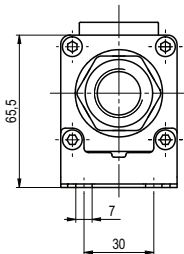
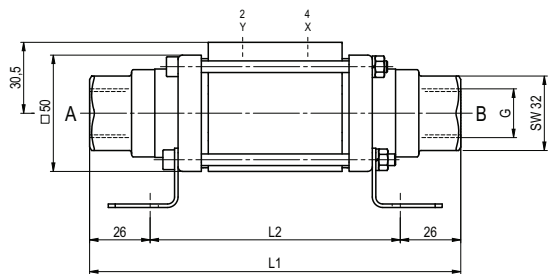




coax® data sheet - coaxial valve

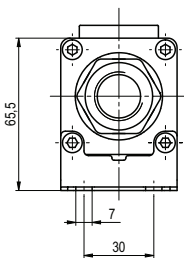
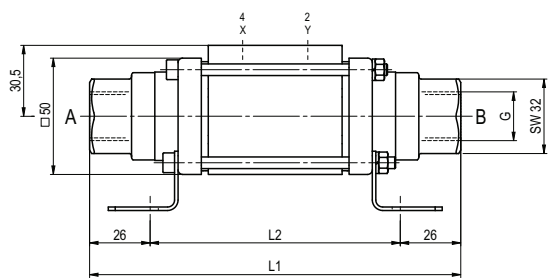
type VMK 10

function: **NC**  
closed when not energized



constructive length	L1	L2 [0-63 bar]	L2 [> 63 bar]
standard	159,5	107,5	114,5
with inductive limit switches	179,5	127,5	134,5

function: **NO**  
open when not energized



pneumatic specifications

