

Pilot operated check, pilot to open Common cavity, Size 10

VSOA-10A

04.33.10 - X - 85 - Z

RE 18319-35

Edition: 03.2016

Replaces: 09.2009



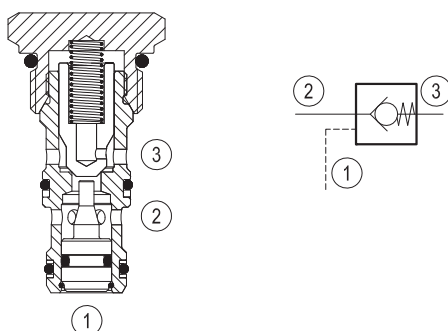
Description

When pressure at 2 rises above the spring bias pressure, the poppet is pushed from its seat and flow is allowed from 2 to 3. The valve is normally closed (checked) from 3 to 2. When sufficient pilot pressure is present at port 1, the pilot piston acts to push the poppet from its seat and flow is allowed from 3 to 2. Precision machining and hardening processes allow virtually leak-free performance in the checked condition.

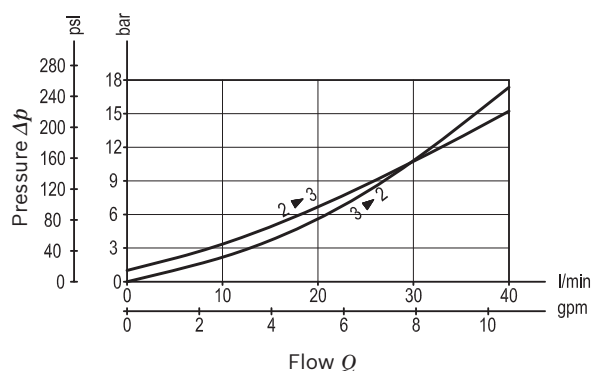
Technical data

Max. operating pressure	350 bar (5000 psi)
Max. flow	40 l/min. (11 gpm)
Pilot ratio	3:1
Max. internal leakage	5 drops/min.
Fluid temperature range	-30 to 100 °C (-22 to 212 °F)
Installation torque	41 - 47 Nm (30 - 35 ft-lbs)
Weight	0.11 kg (0.24 lbs)
Cavity	CA-10A-3N (see data sheet 18325-70)
Lines bodies and standard assemblies	Please refer to section "Hydraulic integrated circuit" or consult factory
Seal kit ¹⁾	Code: RG10A3010530100 material no: R930000990
Fluids	Mineral-based or synthetics with lubricating properties at viscosities of 5 to 800 mm ² /s (cSt)
Recommended degree of fluid contamination	Nominal value max. 10µm (NAS 8) / ISO 4406 19/17/14
Installation position	No restrictions
Other Technical Data	See data sheet 18350-50

1) Only external seals for 10 valves



Characteristic curve



Ordering code

Ordering code															
04.33.10	X	85	Z	00	*										
Pilot operated check, pilot to open		Series 0/A to L unchanged performances and dimensions													
O-Ring on pilot piston		Version and options standard													
00 No O-Ring		<table><tr><th colspan="2">SPRINGS</th></tr><tr><th></th><th>Cracking pressure bar (psi)</th></tr><tr><td>00</td><td>1 (15)</td></tr><tr><td>03</td><td>3.5 (51)</td></tr><tr><td>14</td><td>14 (203)</td></tr></table>				SPRINGS			Cracking pressure bar (psi)	00	1 (15)	03	3.5 (51)	14	14 (203)
SPRINGS															
	Cracking pressure bar (psi)														
00	1 (15)														
03	3.5 (51)														
14	14 (203)														
10 With O-Ring (only for Z=03 and Z=14)															
85 Common cavity, Size 10															

Preferred types

Type	Material number	Type	Material number
043310008500000	R901117416	043310108500000	R901117418
043310008503000	R901117420	043310108503000	R901117421
043310008514000	R930000988	043310108514000	R930000989

Dimensions

