

coax® data sheet - pressure limitation valve

type HPB-H 15



03/2022



⚠ Above stated body materials refer to the valve port connections that get in contact with the media only!

details needed for main valve

- orifice
- port
- pressure regulating range
- flow rate
- media
- media temperature
- ambient temperature

details needed for pneumatic actuation

- nominal voltage
- type of protection
- actuation pressure range min/max

⚠ The valves' technical design is based on media and application requirements. This can lead to deviations from the general specifications shown on the data sheet with regards to the design, sealing materials and characteristics.

⚠ If order or application specifications are incomplete or imprecise there exists a risk of an incorrect technical design of the valve for the required application. As a consequence, the physical and / or chemical properties of the materials or seals used, may not be suitable for the intended application. To avoid hydraulic shocks in pipelines, the flow velocities must be taken into account when designing valves for liquids.

control valve manual

pressure range

orifice

connection

function

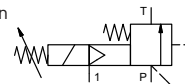
externally controlled

PN 5-120 bar

DN 15 mm

thread

stepless pressure regulation



operating principle

body material

externally controlled with spring return

- | | |
|--------------------|---|
| ① | ④ |
| ② steel galvanized | ⑤ |
| ③ | ⑥ |

valve seat

metal on metal

seal materials

FPM, PTFE

ports

function

pressure regulation range

flow rate

media

general specifications

HPB threads G 1
stepless pressure regulation
bar 5-120
m³/h 6,0
liquid - highly viscous - contaminated

options

SAE connections DIN ISO 6162

abrasive media

flow direction

settling time

media temperature

ambient temperature

approvals

mounting

weight

additional equipment

P ⇌ T as marked
ms < 900
°C 0 to +60
°C 0 to +50

mounting holes
kg 2,6

security valve

electrical specifications

U _n	DC 24 V	special voltage upon request
U _n	AC 230 V 50 Hz	special voltage upon request
DC	4,8 W	2,5 W
AC	pick up 11,0 VA holding 8,5 VA	
IP65 (P54)	acc. DIN 40050	
ED	100%	
connection	plug acc. DIN EN 175301-803 form B, 3 positions x90° / wire diameter 6-8 mm	
optional	connector acc. DESINA	connector acc. VDMA
additional equipment	illuminated plug with varistor	
media	60°C	
ambient	50°C	
E Ex e II T5	nominal voltage U _n	DC 24 V 3,25 W
	power consumption	AC 230 V 50 Hz 2,90 W

options

pneumatic specifications

bar	see actuation pressure-diagram
	DIN ISO 8573-1 grade of compressed air quality 5/4/3
	preferably 3/2 way pilot valve during low pressure circulation mode
1	G 1/8

options

actuation pressure range

compressed air

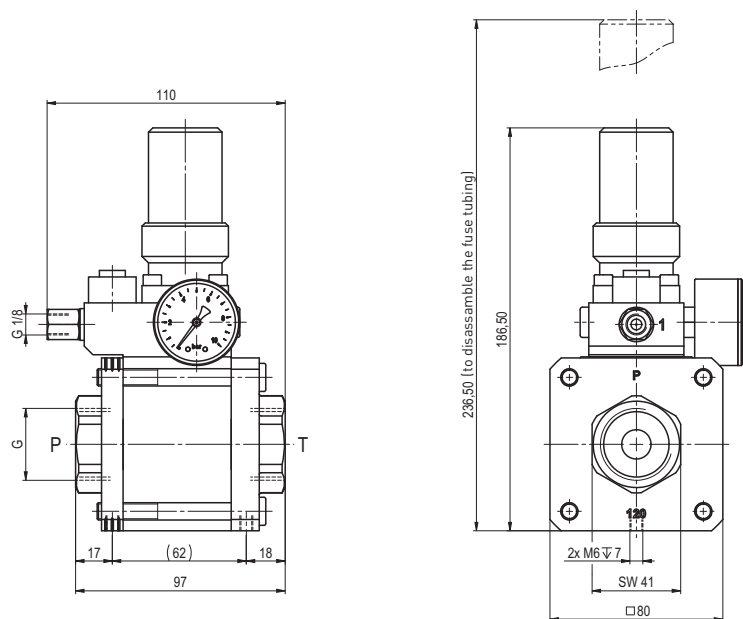
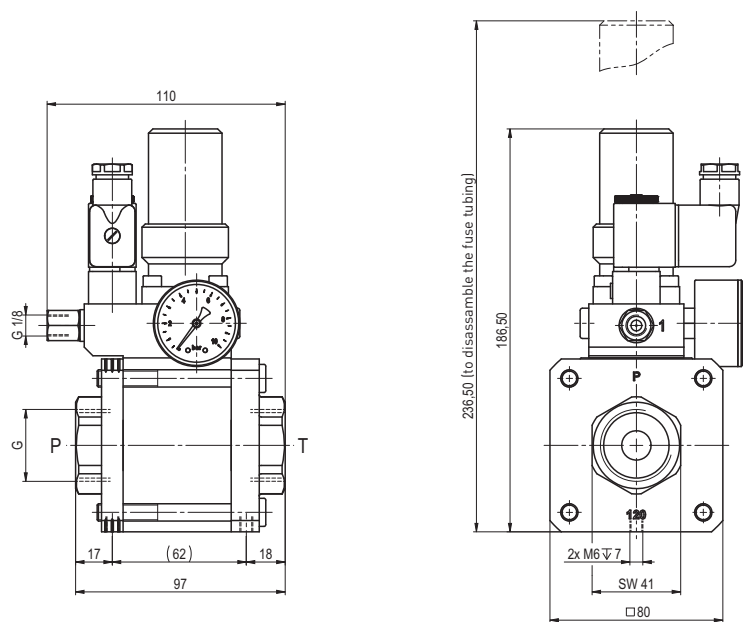
control

actuator ports

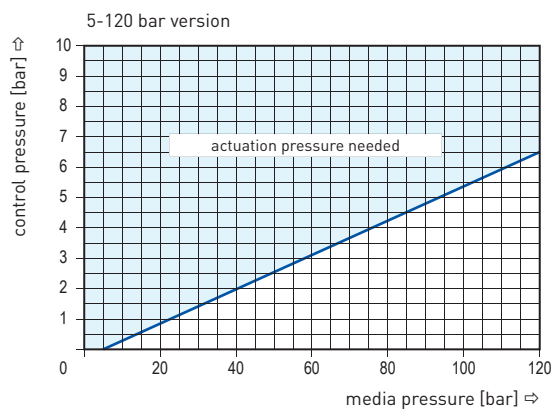
■ specifications not highlighted are standard
■ specifications highlighted in grey are optional

coax® data sheet - pressure limitation valve

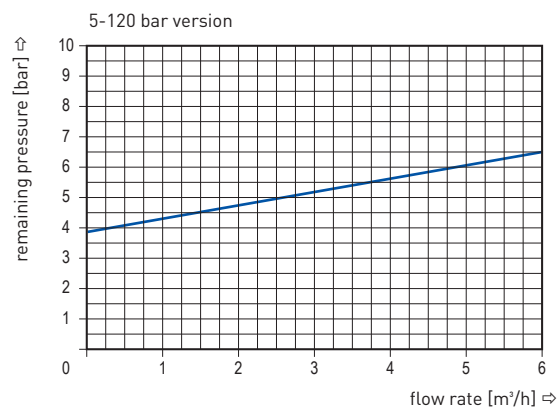
type HPB-H 15



actuation pressure-diagram



pressureless circulation mode



Sound creation during low pressure circulation mode and flow $Q=6 \text{ m}^3/\text{h}$ ca. 70 dbA