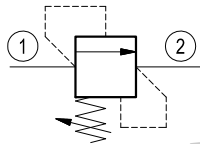
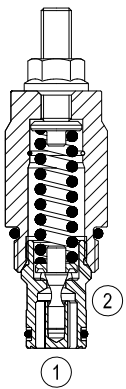


# Relief, direct acting guided poppet type

Common cavity, Size 10

VSBN-10A

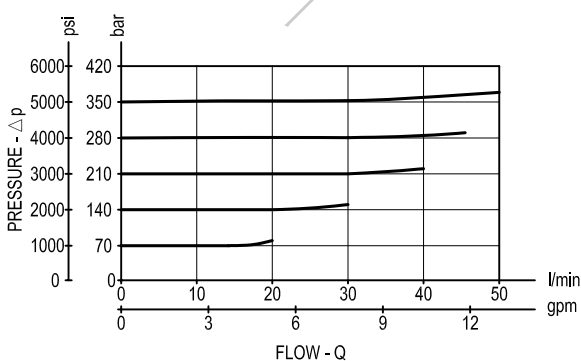
04.11.55 - X - 85 - Z



## Description

Flow is blocked from 1 to 2 until pressure increases to meet the selected valve setting, lifting the poppet from its seat and allowing relief flow through port 2 to tank. Pressure at port 2 is additive to the relief setting of the valve. The unique Bosch Rexroth Oil Control poppet design provides enhanced stability at all flows and pressures.

## Performance



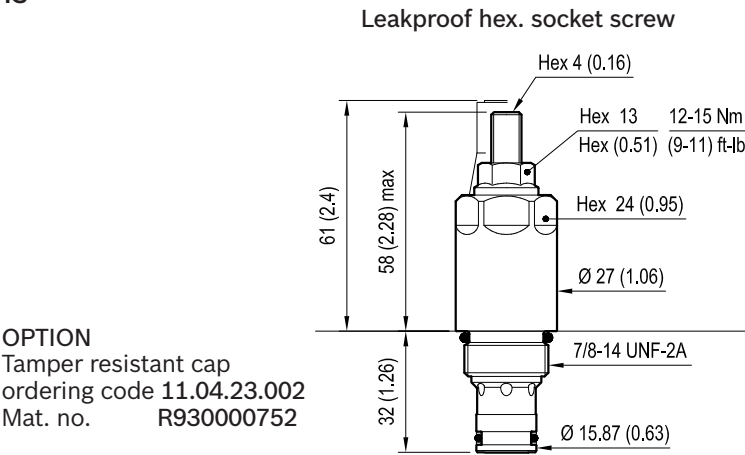
## Technical data

Max. operating pressure port 1 (P)	bar (psi)	350 (5000)
Max. pressure admitted port 2 (T)	bar (psi)	350 (5000)
Max. flow	l/min. (gpm)	50 (13)
Max. internal leakage (*)	drops/min.	15
Fluid temperature range	°C (°F)	-30 to 100 (-22 to 212)
Installation torque	Nm (ft-lbs)	41-47 (30-35)
Weight	kg (lbs)	0.2 (0.44)
Cavity		CA-10A-2N see data sheet RE 18325-70
Seal kit (**)	code material no.	RG10A2010530100 R901111366
Fluids		Mineral-based or synthetics with lubricating properties at viscosities of 10 to 500 mm <sup>2</sup> /s (cSt)
Filtration		Nominal value max. 10µm (NAS 8) ISO 4406 19/17/14
Installation		No restrictions
Other general technical data		See data sheet RE 18350-50

(\*) Max. to 80% of nominal setting.

(\*\*) Only external seals for 10 valves

Dimensions



mm (Inches)

Ordering code

04.11.55	X	85	Z	00	*
----------	---	----	---	----	---

Series 0/A to L  
unchanged performances and dimensions

Relief, direct acting guided  
poppet type

Version and options standard

Adjustments  
= 03 Leakproof hex. socket screw

Common cavity, Size 10

SPRINGS			
	Adj. press. range bar (psi)	Pressure increase bar/turn (psi/turn)	Std. setting bar (psi) Q=5 l/min.
= 05	5-70 (75-1000) (*)	16 (232)	50 (725)
= 10	35-140 (500-2000)	24 (348)	100 (1450)
= 20	105-210 (1500-3000)	54 (783)	200 (2900)
= 35	175-350 (2500-5000)	84 (1218)	350 (5000)

Note: Special settings available. Contact factory authorized  
representative for ordering code  
(\*) minimum pressure setting intended with Q=5 l/min. (1.3 gpm)

Type	Material number
041155038505000	R901191831
041155038510000	R901113609
041155038520000	R901113610
041155038535000	R901115702

Type	Material number