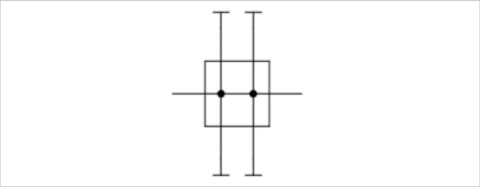


Distributor, Series NL4-DIL

- G 1/2
- Distributor 4x



Version	Narrow distributor, Can be assembled into blocks
Parts	Distributor
Mounting orientation	Any
Working pressure min./max.	0 ... 16 bar
Ambient temperature min./max.	-10 ... 60 °C
Medium temperature min./max.	-10 ... 60 °C
Medium	Compressed air Neutral gases
Weight	0.4 kg

Technical data

Part No.	Port	Nominal flow	Nominal flow	Nominal flow	Nominal flow	Nominal flow
		Qn 1►2	Qn 1►3	Qn 1►4	Qn 1►5	Qn 1►6
0821300930	G 1/2	11000 l/min	8750 l/min	1340 l/min	8750 l/min	1340 l/min

Nominal flow Qn with secondary pressure p2 = 6 bar at Δp = 1 bar

Technical information

The pressure dew point must be at least 15 °C under ambient and medium temperature and may not exceed 3 °C .

A change in the flow direction (from air supply on the left to air supply on the right) occurs by rotating installation by 180° about the vertical axis. Please see the operating instructions for further details.

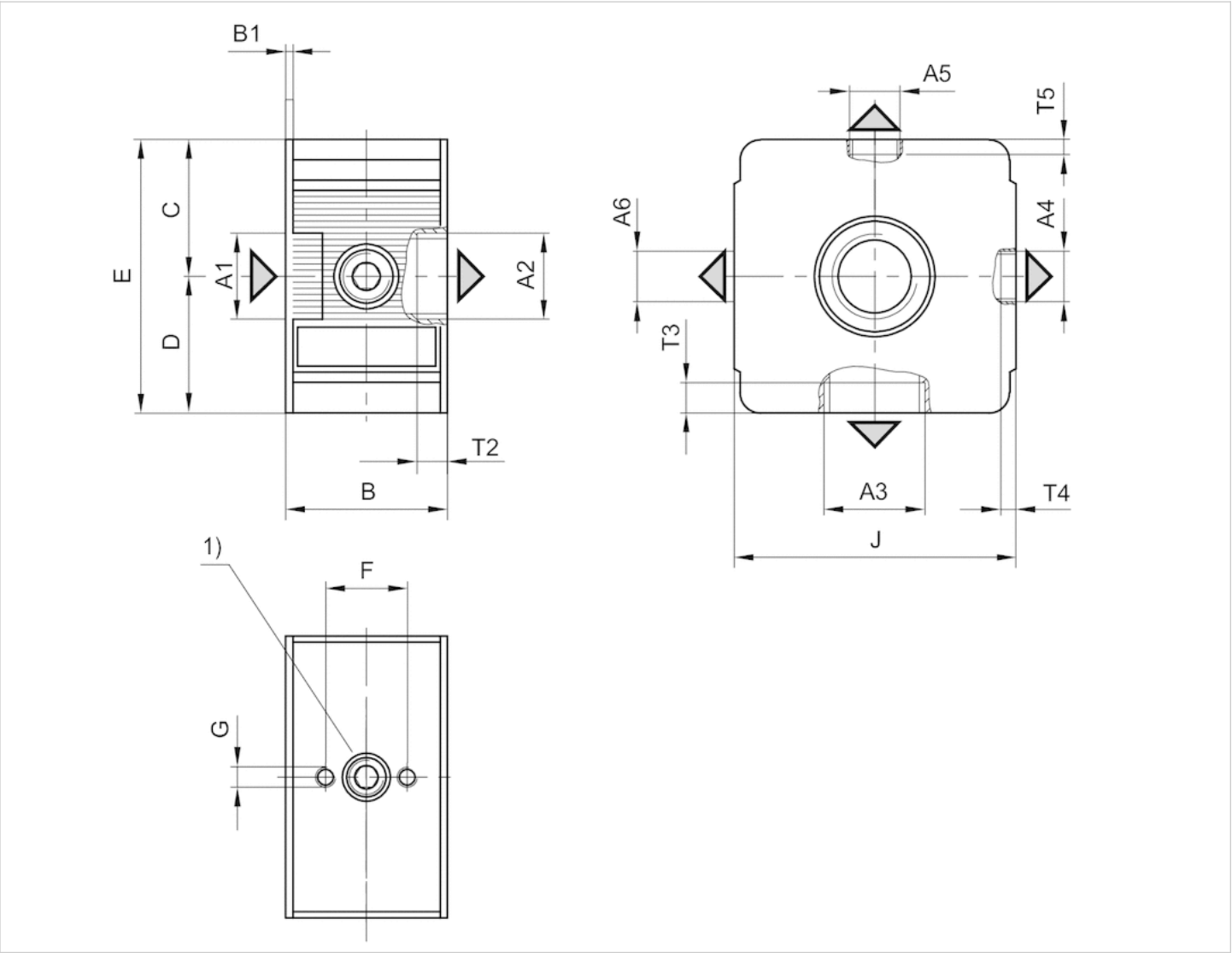
Suitable for direct mounting of a PE2 and PM1 series pressure sensor (flange version).

Technical information

Material	
Housing	Die cast zinc
Front plate	Acrylonitrile butadiene styrene

Dimensions

Dimensions



- A1 = input
 A2 = output
 A3 = output
 A4 = output
 A5 = output
 A6 = output
 1) hole pattern for mechanical vacuum/pressure switch

Dimensions in mm

A1	A2	A3	A4	A5	A6	B	B1	C	D	E	F	G	J	T2	T3	T4	T5
G 1/2	G 1/2	G 3/8	G 1/4	G 1/8	G 1/4	39.6	1.8	33.5	33.5	67	20	M5	69	14	10.5	7	8