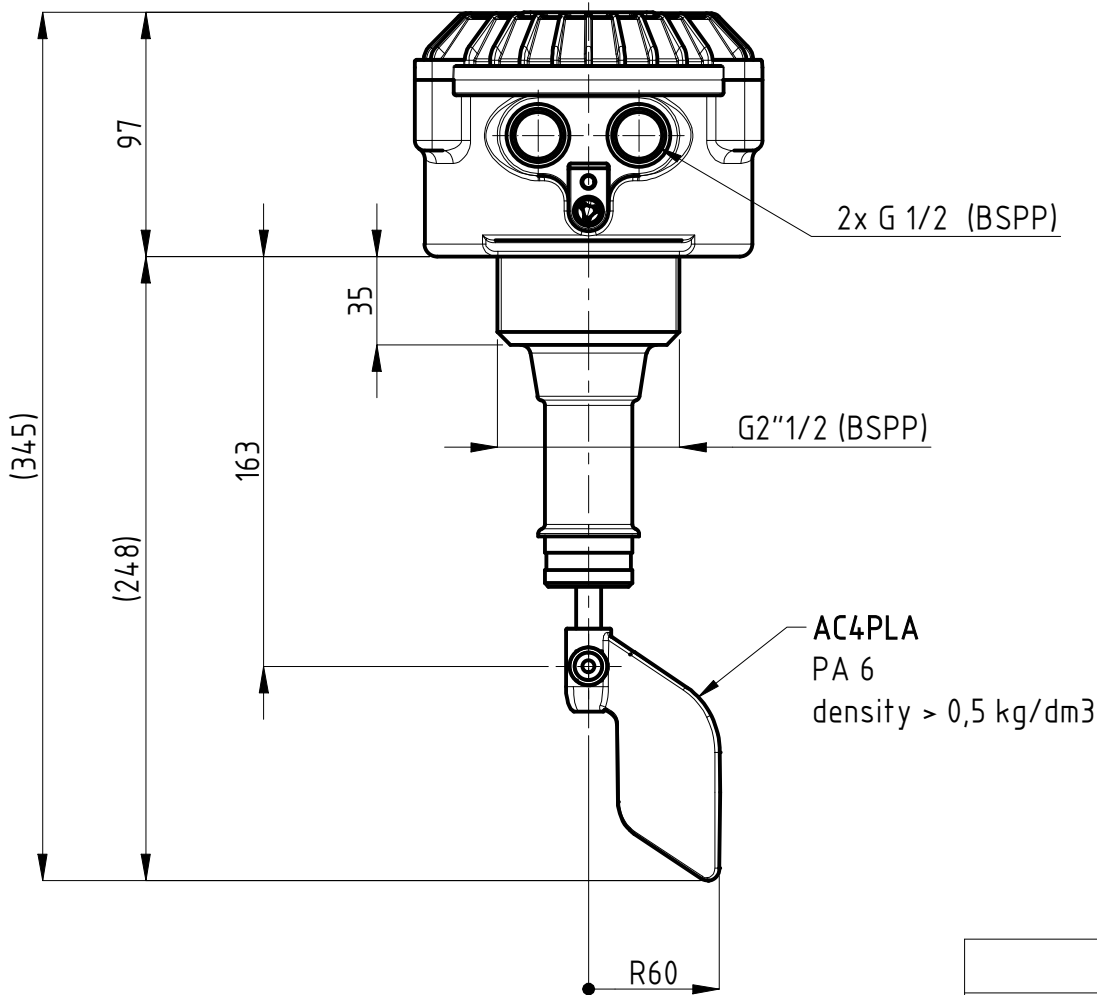
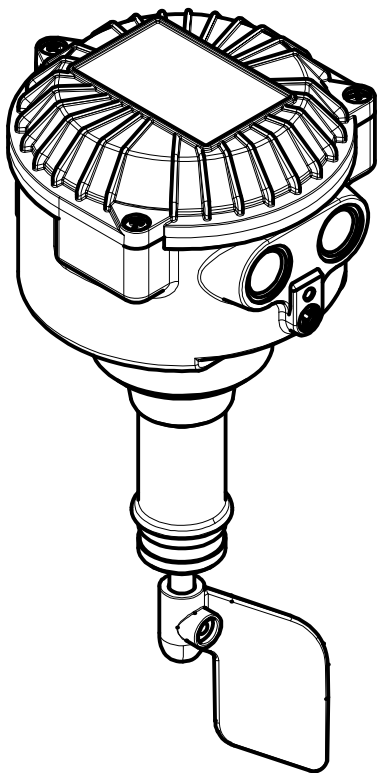


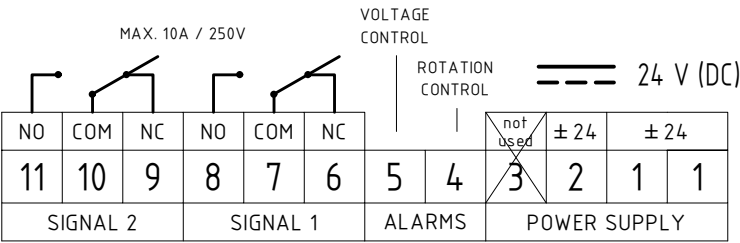
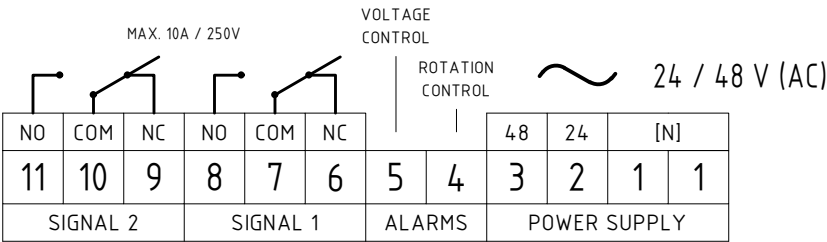
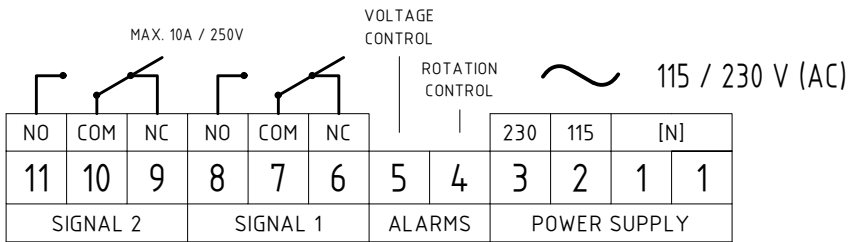
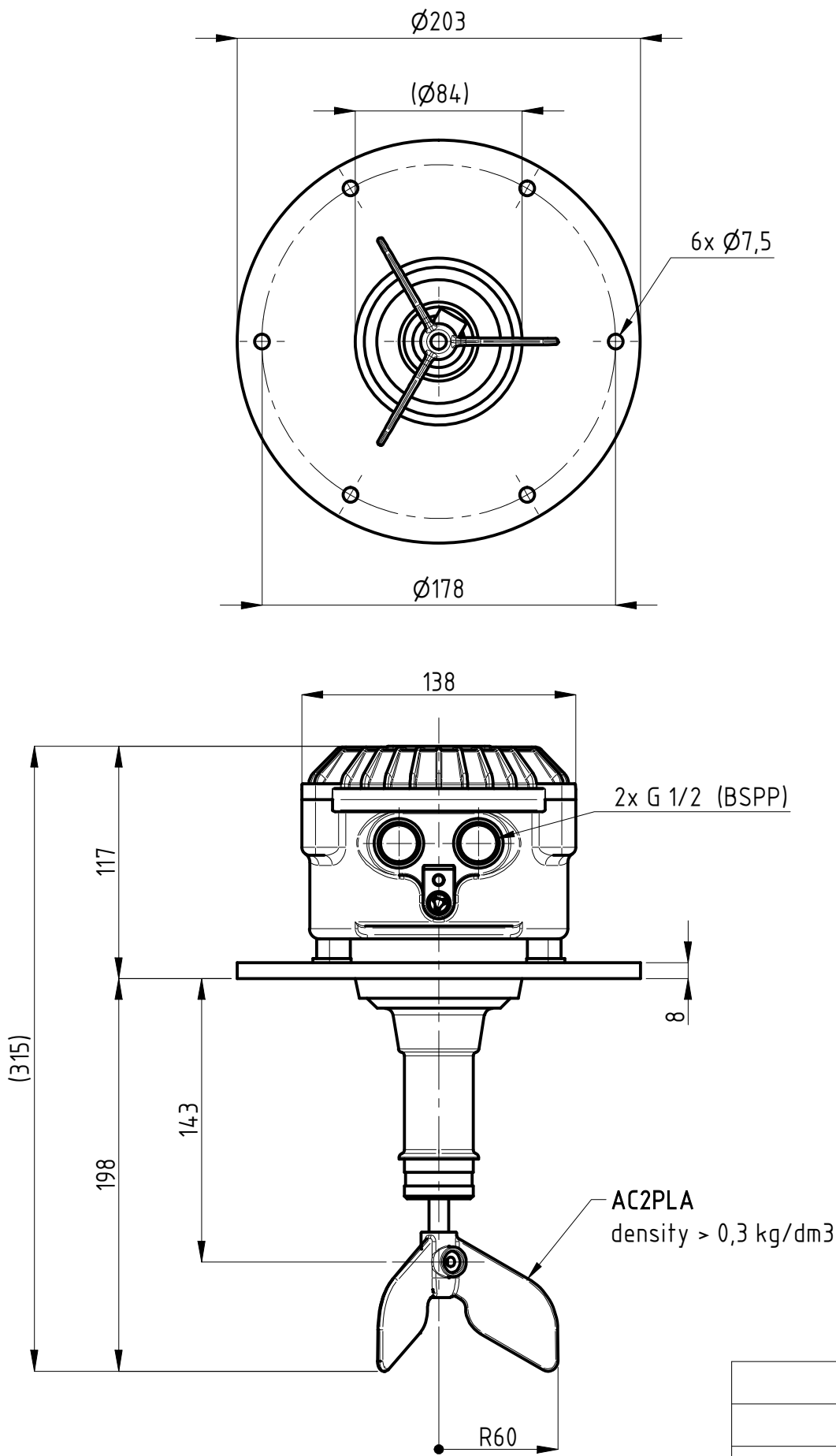
Terminals : male FASTON (.250 series / 6,3x0,8 mm)



PFG05

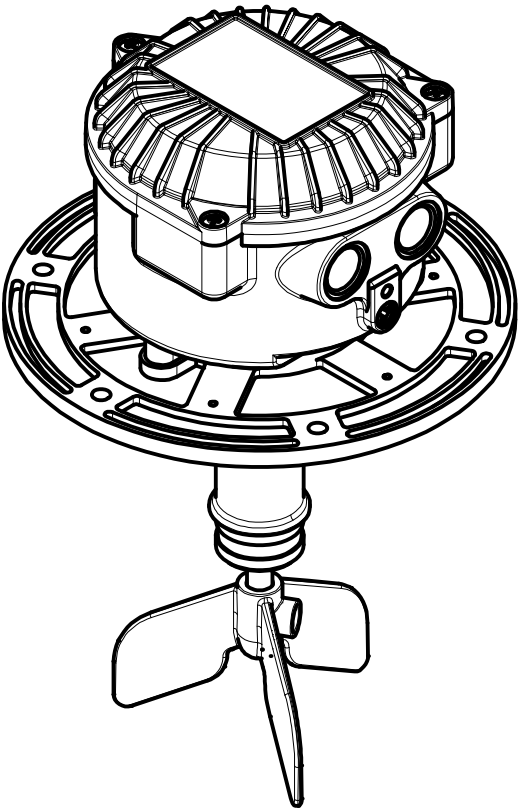


Model	PFG05											
Weight	1,8 [kg]											
Power supply	- Bivoltage 115/230[V] (50...60Hz) - 4[W] - Bivoltage 24/48[V] (50...60Hz) - 4[W] - DC 24[V] ±15% - 4[W]											
Signal	SPDT / max. 10[A]-250VAC											
IP grade	IP65											
Housing	Aluminium (powder coated)											
Connection	G2" 1/2 - Aluminium											
Ambient temperature	-20 < Ta < +70 [°C] -40 < Ta < +70 [°C] <i>LOW TEMPERATURE versions only (PFG.../B)</i>											
Process temperature	-20 < Tp < +70 [°C] -40 < Tp < +70 [°C] <i>LOW TEMPERATURE versions only (PFG.../B)</i>											
Pressure range	+0,8 ... +1,1 bar [abs]											
Directives	2011/65/EU (RoHS) 2014/30/EU (EMC) 2014/34/EU (ATEX) 2014/35/EU (LVD)											
ATEX Marking	Ex II 1/2 D Ex ta/tb IIIC T85°C IP65 Da/Db Ex II 3 D Ex tc IIIB T85°C Dc (Lamp version)											
IECEX Marking	Ex ta/tb IIIC T85°C Da/Db											
® CAMLogic Via dell'Industria 12 42025 Cavriago (RE) - ITALY						DRAWING N. <b>0602_001_0</b>				SHEET: 1 OF 5		
										REV: 1		
GENERAL TOL.: ISO 2768-mH						UNLESS OTHERWISE SPECIFIED DRAWING FROM CAD SYSTEM - REFER TO 3D MODEL FOR MISSING DIMENSION - NO MANUAL MODIFICATION ALLOWED				SCALE: 1:3		
										DRAWN NR DATE 21.09.2021		



Terminals : male FASTON (.250 series / 6,3x0,8 mm)

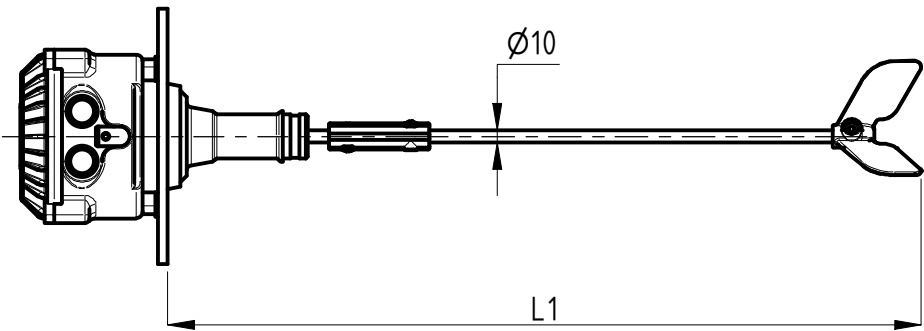
PFG05/F



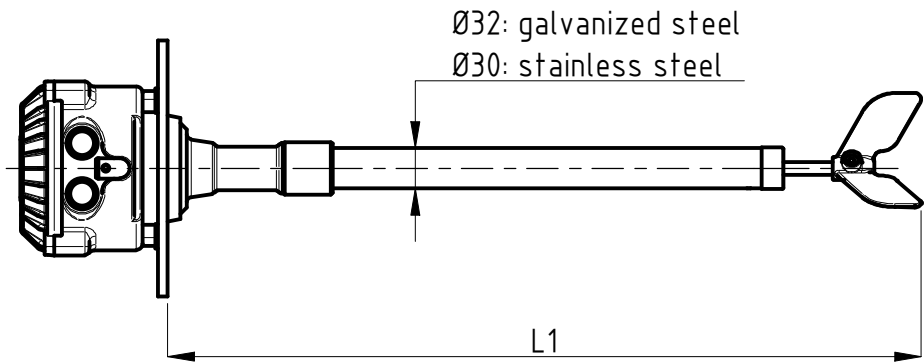
Model	PFG05/F										
Weight	2,3 [kg]										
Power supply	Bivoltage 115/230[V] (50...60Hz) - 4[W] Bivoltage 24/48[V] (50...60Hz) - 4[W] DC 24[V] ±15% - 4[W]										
Signal	SPDT / max. 10[A]-250VAC										
IP grade	IP65										
Housing	Aluminium (powder coated)										
Connection	Flange - Aluminium										
Ambient temperature	-20 < Ta < +70 [°C] -40 < Ta < +70 [°C] <i>LOW TEMPERATURE versions only (PFG.../B)</i>										
Process temperature	-20 < Tp < +70 [°C] -40 < Tp < +70 [°C] <i>LOW TEMPERATURE versions only (PFG.../B)</i>										
Pressure range	+0,8 ... +1,1 bar [abs]										
Directives	2011/65/EU (RoHS) 2014/30/EU (EMC) 2014/34/EU (ATEX) 2014/35/EU (LVD)										
ATEX Marking	Ex II 1/2 D Ex ta/tb IIIC T85°C IP65 Da/Db Ex II 3 D Ex tc IIIB T85°C Dc (Lamp version)										
IECEX Marking	Ex ta/tb IIIC T85°C Da/Db										
® CAMLogic Via dell'Industria 12 42025 Cavriago (RE) - ITALY						DRAWING N. <b>0602_001_0</b>			SHEET: 2 OF 5		
									REV: 1		
GENERAL TOL.: ISO 2768-mH						UNLESS OTHERWISE SPECIFIED DRAWING FROM CAD SYSTEM - REFER TO 3D MODEL FOR MISSING DIMENSION - NO MANUAL MODIFICATION ALLOWED			SCALE: 1:3		
									DRAWN NR DATE 21.09.2021		

EXTENSIONS

Extension w/o protection  
PSP : galvanized steel  
PSPX : stainless steel

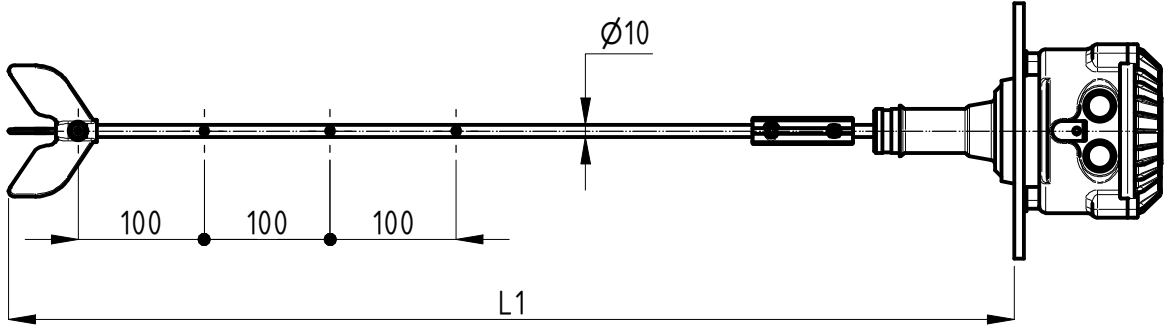


Extension with  
external protection  
PCP : galvanized steel  
PCPX : stainless steel

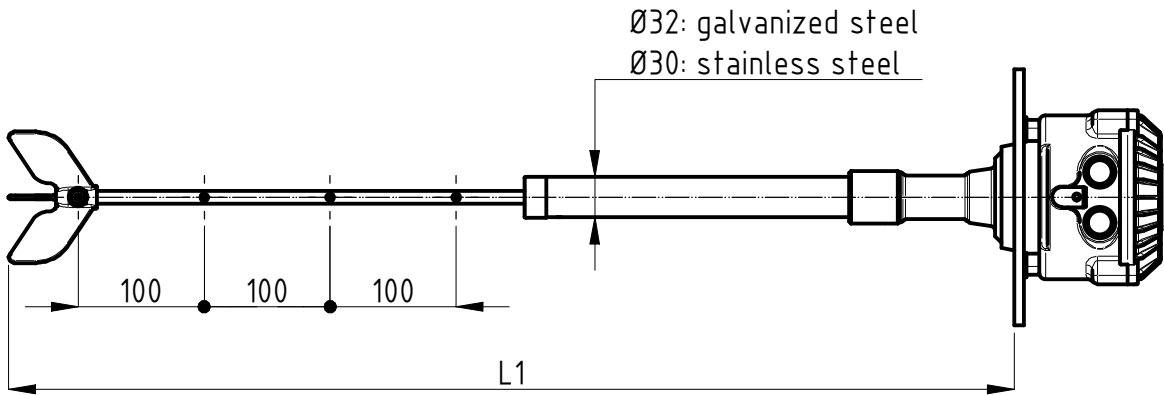


L1 [mm]
300
400
500
600
700
800
900
1000
1200
1500
1800
2000
2500
3000
other lengths available on request, up to 3m

L1 [mm]
600
700
800
900
1000
1200
1500
1800
2000
2500
3000
other lengths available on request, up to 3m

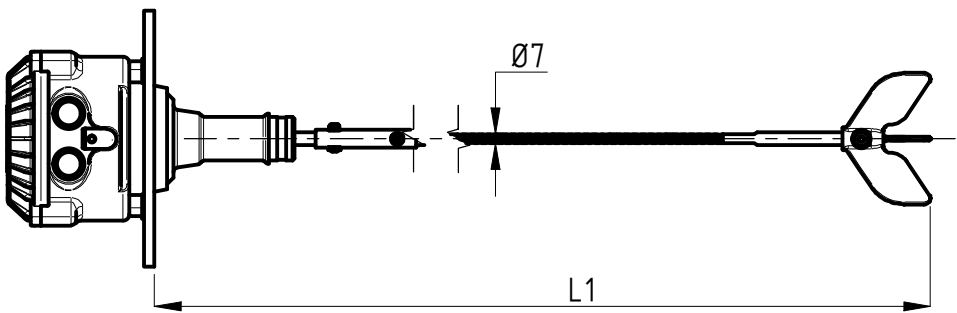


Adjustable extension  
w/o protection  
PRS : galvanized steel  
PRSX : stainless steel



Extension with  
external protection  
PRP : galvanized steel  
PRPX : stainless steel

Flexible extension  
PF : galvanized steel

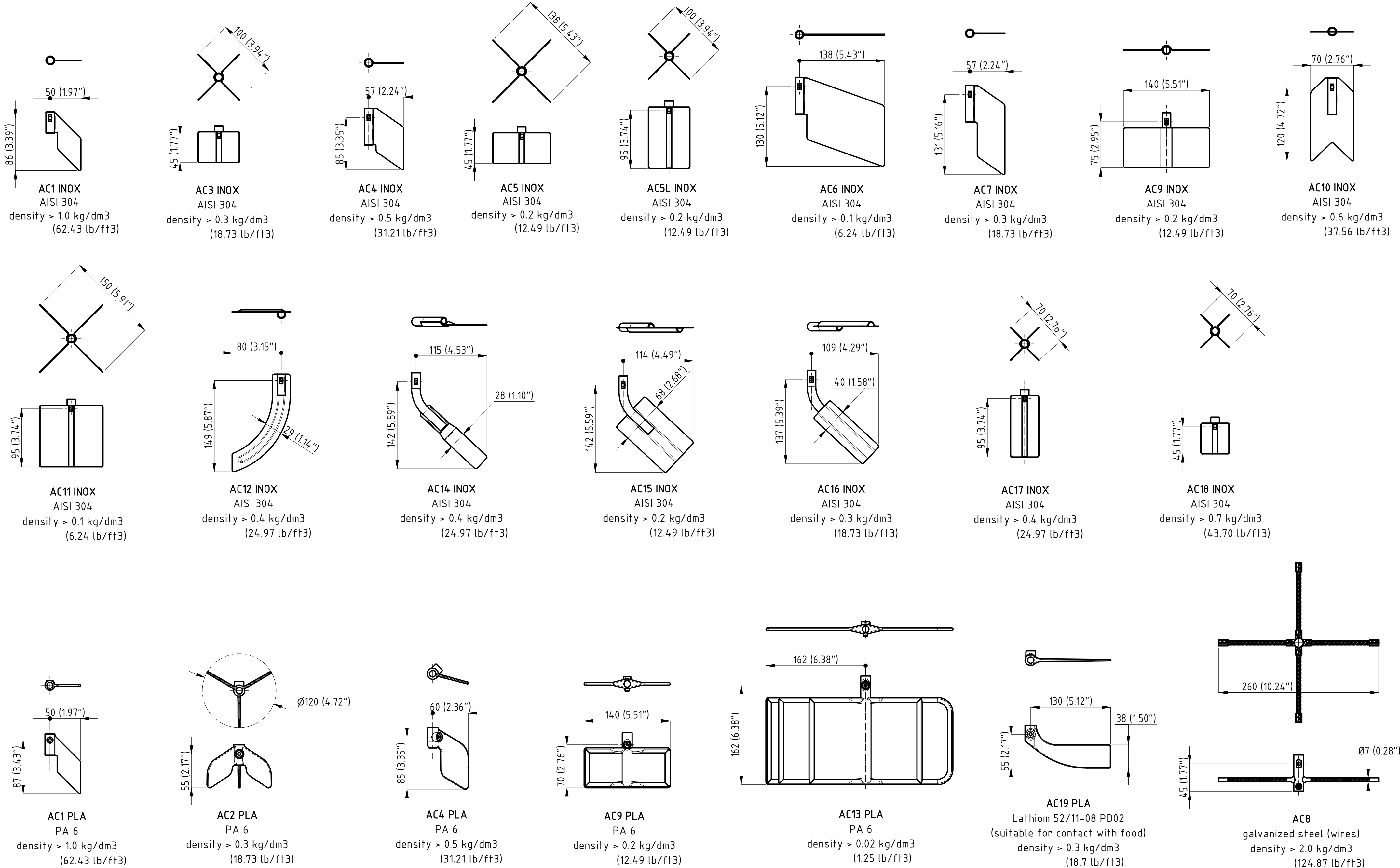


L1 [mm]
500
600
700
800
900
1000
1200
1500
2000
2500
3000
4000

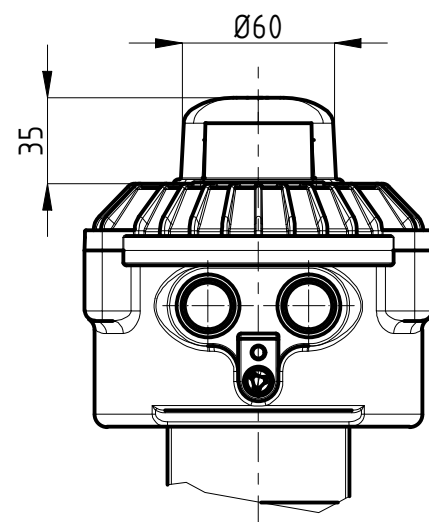
L1 [mm]
5000
6000
7000
8000
9000
10000
11000
12000
other lengths available on request, up to 12m

NOTE : lenghts may slightly differ from the tables  
according to the type of connection, model and paddle  
chosen

# PADDLES



## OPTIONS



### SIGNAL LAMP (PFG05.../L)

Adds a LED lamp on top. The lamp could be connected to NC contact (MIN level - empty), or NO contact (MAX level - full).

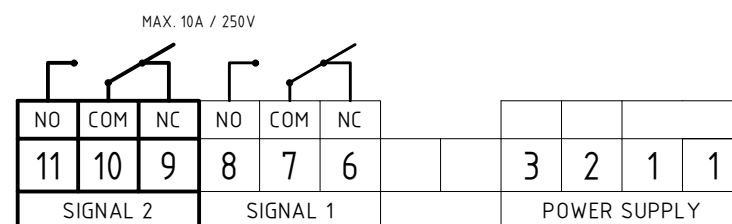
Must define a single power supply voltage: 24[V]  
48[V]  
115[V]  
230[V]

#### NOTE

Model with lamp can be installed only in Atex zone 22  
Marking: Ex II 3 D Ex tc IIIB T85°C Dc

### DOUBLE DRY CONTACT

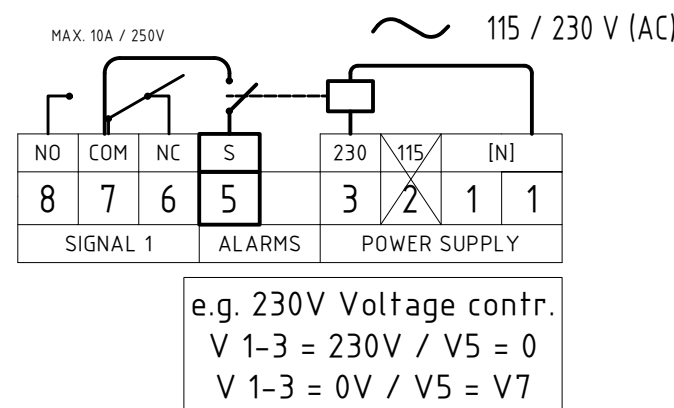
Adds a second signal contact SPDT (terminals 9 - 10 - 11)



### VOLTAGE CONTROL

Adds an alarm in case of power supply failure. When power supply is OFF, a relay closes terminals 5 and 7

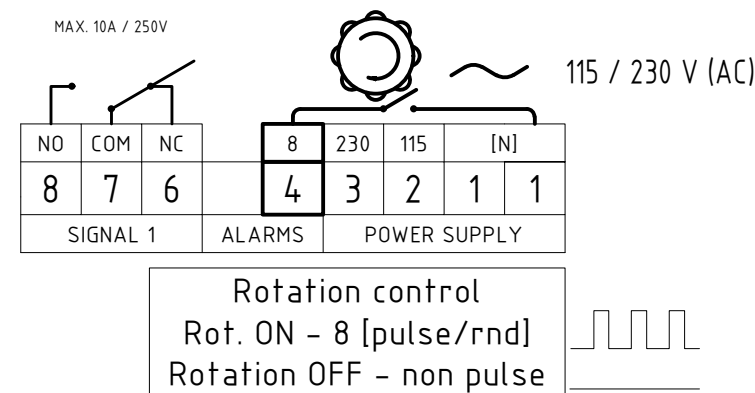
Must define a single power supply voltage: 24[V]  
48[V]  
115[V]  
230[V]



### ROTATION CONTROL

Adds a signal to indicate shaft rotation. When the shaft rotates, a microswitch generates a pulse signal (8 pulse / rotation) between terminals 1 and 4.

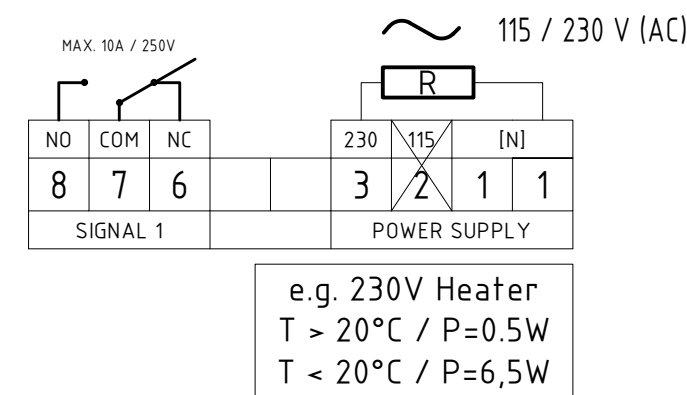
On request, it is possible to have the pulsed signal between terminals 4 and 7.



### LOW TEMPERATURE (PFG05.../B)

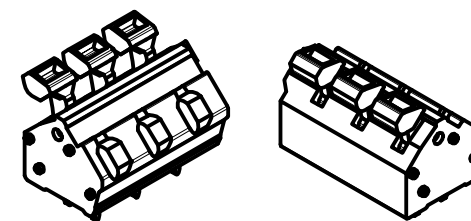
Extends the range of use of the indicator down to a minimum temperature of -40 °C  
Intelligent automatic operation: when the temperature exceeds + 20 °C it stops heating (heating OFF), it is reactivated when the temperature falls again below + 20 °C (heating ON)

Must define a single power supply voltage: 24[V]  
48[V]  
115[V]  
230[V]



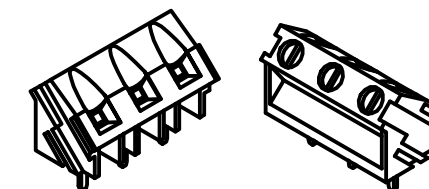
### SPRING TERMINAL BLOCK

Terminals with spring terminal design. No tool needed for wires connection. 0,13 - 2,5mm<sup>2</sup> (AWG26 - AWG14)



### SCREW TERMINAL BLOCK

Terminals with screw terminal design (flat head) 0,05 - 2,5mm<sup>2</sup> (AWG30 - AWG12)



### 4rpm GEARMOTOR

Increase paddle speed (4 rpm) to reduce product detection delay time (response time ~ 1,5s)

### CONDENSATION FILTER

It allows the exchange of air temperature and pressure with the ambient, preventing the formation of condensation. The option does not alter the IP grade and the Ex marking of the device.

® CAMLogic  
Via dell'Industria 12  
42025 Cavriago (RE) - ITALY

**CAMLOGIC**

DRAWING N.  
**0602\_001\_0**

SHEET:  
5 OF 5  
REV: 1

GENERAL TOL.: ISO 2768-mH

UNLESS OTHERWISE SPECIFIED  
DRAWING FROM CAD SYSTEM - REFER TO 3D MODEL FOR  
MISSING DIMENSION - NO MANUAL MODIFICATION ALLOWED

SCALE: 1:3

DRAWN NR  
DATE 14.10.2021

SIZE UNI A3