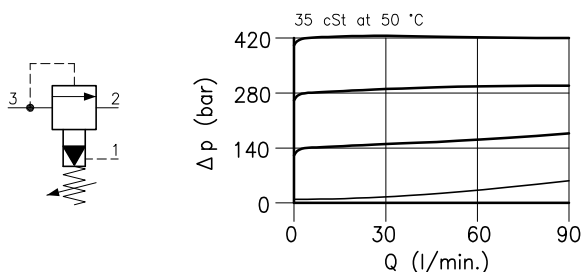
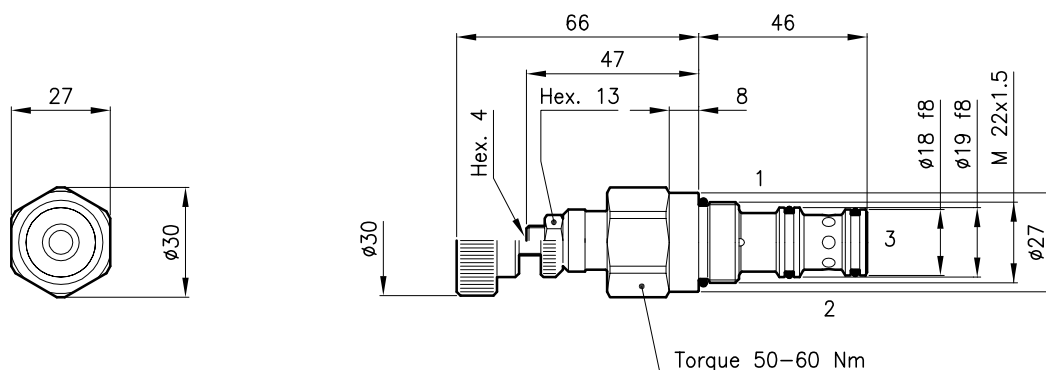


Technical features



Cavity	(For dimensions see catalogue 17.000)	S 30/3
Max. flow	(l/min.)	70
Max. inlet pressure	(bar)	420
Max. pressure on line 2	(bar)	420
Max. drain on line 1	(l/min.)	1.2
Fluid viscosity range	(cSt)	2.8 – 380
Fluid temperature range	(°C)	–20 +80
Mass	(kg)	0.200
Standard setting obtained with 10 l/min.		
Hydraulic fluid; mineral oil HM and HV ISO 6074		
Recommended filtration; 19/15 ISO 4466 (25 μ absolutes)		
Standard seals in Polyurethane and Buna N		

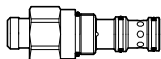
Dimensions



Ordering informations

LPY 30/D–N

LPY 30 = Valve type



Standard springs

Type Setting range Factory set

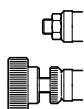
D = 10 – 210 bar 140 bar

Q = 105 – 420 bar 315 bar

Adjustment type

N = Standard adjustment

V = Handknob adjustment



Codes:

LPY 30/D–N 31 011 130

LPY 30/Q–N 31 011 131

LPY 30/D–V 31 011 132

LPY 30/Q–V 31 011 133

External seals kit 90 620 104

LPY 30 valves can be assembled on standard bodies 30–C3 series; for dimensions see catalogue 16.010