

Solenoid operated valves 3-way 2-positions

Common cavity size 08

Cartridge style in manifold

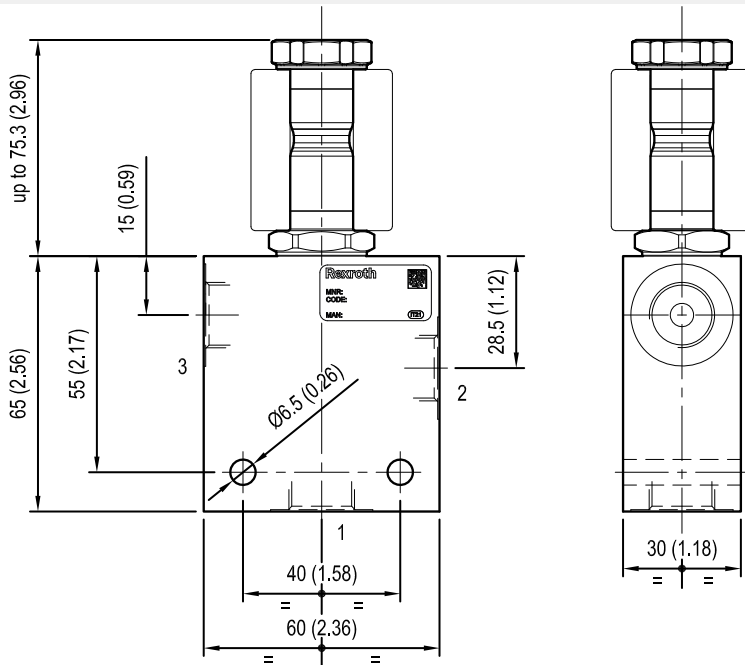
VED-CS-16-08A-32

OS.13 - K - 51 - X - Y - Z - W

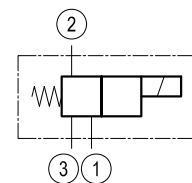
RE 18331-67

Edition: 04.2023

Replaces: 02.2019



[mm (inches)]



Cartridge schemes (K)

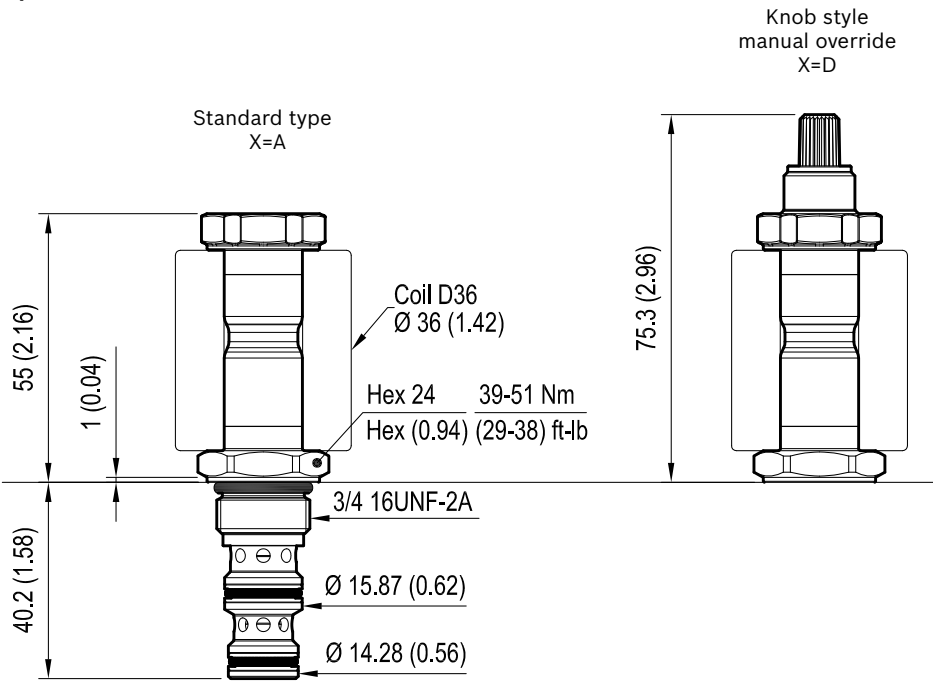
monodirectional type	bidirectional type
	10
	11
	20
	30

Technical data

Max. flow	20 l/min (5 gpm)*
Max. operating pressure for steel body	280 bar (4060 psi)
Max operating pressure for aluminium body	210 bar (3000 psi)
Ambient temperature range	-30 to 90 °C (-22 to 194 °F)
Fluids: Mineral-based or synthetics with lubricating properties at viscosities of 20 to 380 mm ² /s (cSt)	
MTTFd	150 years see RE 18350-51
To order manifold only, see data sheet RE 18325-85	
Other technical data	See data sheet 18350-50

* see performance graph on page 3

Solenoid operated valves, direct acting
spool type 3-way 2-position



Cartridge technical data

General	
Installation orientation	Unrestricted
Ambient temperature range	-30 to 90 °C (-22 to 194 °F)
Hydraulic	
Max. operating pressure	280 bar (4060 psi)
Flow range	up to 20 l/min (5 gpm)
Max. internal leakage	40 cm³/min. (2.4 cu.in/min.)
Fluid temperature range	-20 to 80 °C (-4 to 176 °F)
Fluids: Mineral-based or synthetics with lubricating properties at viscosities of 20 to 380 mm²/s (cSt)	
Installation torque	39 - 51 Nm (29 - 38 ft-lbs)
Recommended degree of fluid contamination	Nominal value max. 10 µm (NAS 8) ISO 4406 19/17/14
MTTFd	150 years see RE 18350-51
Cavity	CA-08A-3N see data sheet 18325-70
Other technical data	See data sheet 18350-50

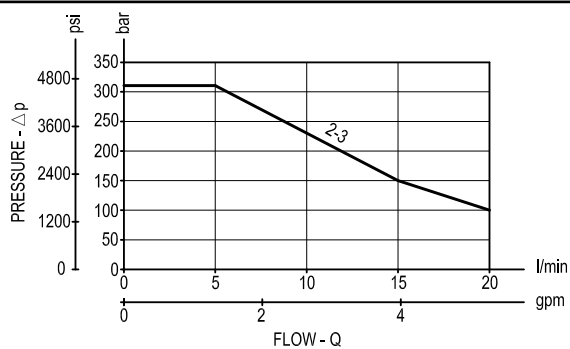
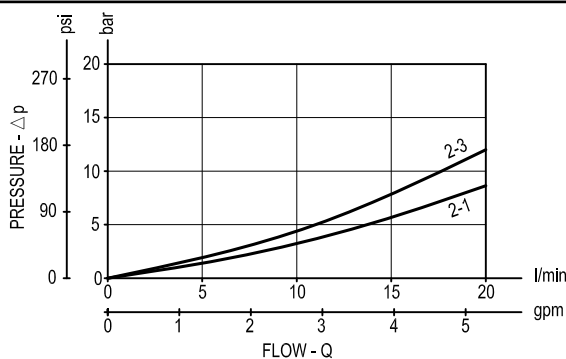
Electrical	
Type of voltage	DC voltage
Coil type	D36
Supply voltage	See data sheet 18325-90
Admitted voltage tolerance: -10%/+15% of nominal voltage at 60°C amb. T	
Power consumption	20 W
Type of protection	See data sheet 18325-90
Note: Coils must be ordered separately	

Characteristic curves

Version 10

Performance limits at 100% duty cycle with 90°C and 60°C amb. T

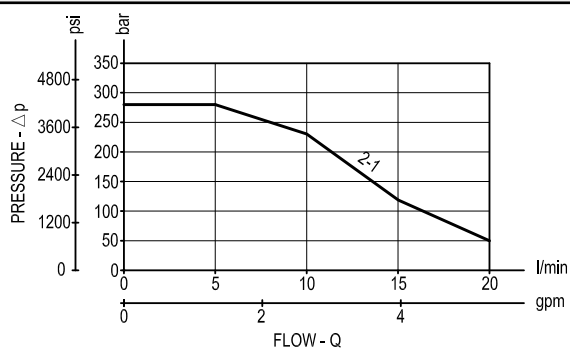
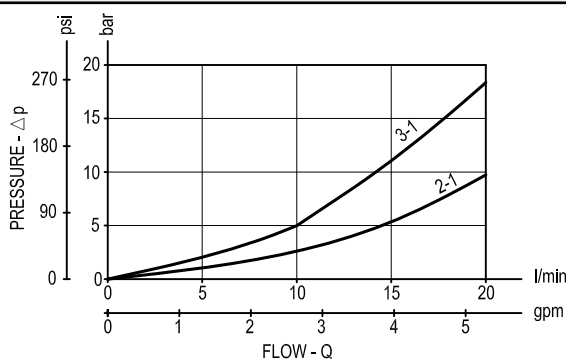
Pressure drop



Version 20

Performance limits at 100% duty cycle with 90°C and 60°C amb. T

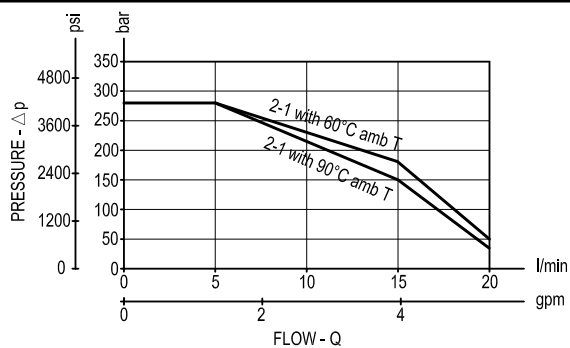
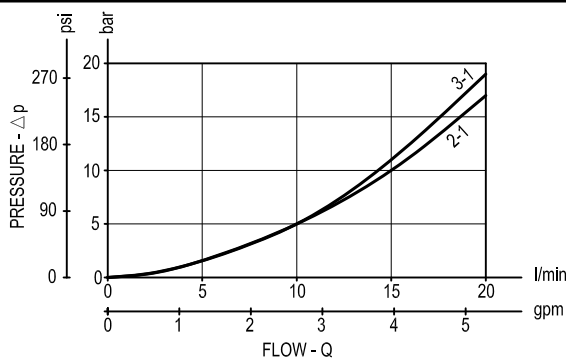
Pressure drop



Version 30

Performance limits at 100% duty cycle

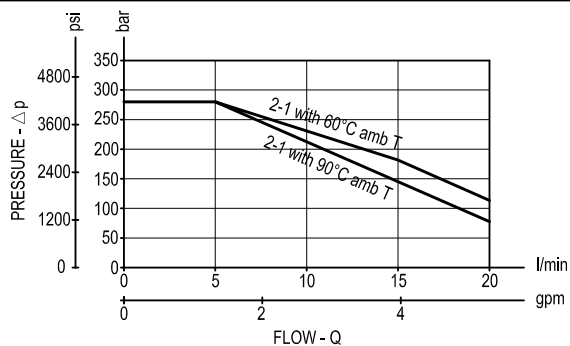
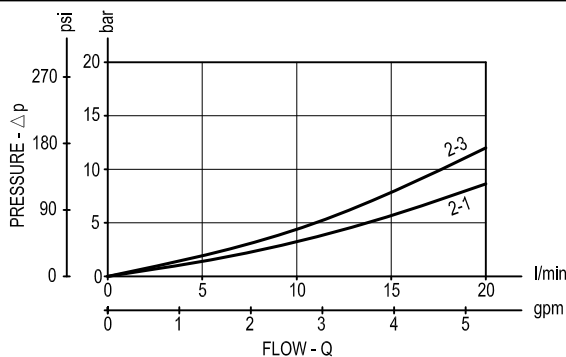
Pressure drop



Version 11

Performance limits at 100% duty cycle

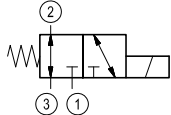
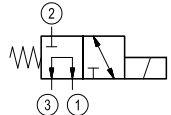
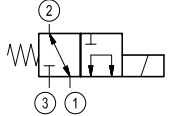
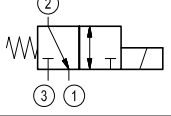
Pressure drop



Minimum switching voltage for all versions at 100% ED	
Amb. T	Voltage required
60°C	-10% of V nominal
90°C	V nominal

Note: in case of need of performance limits at specific different working conditions, please consult factory.

Ordering code

OS.13	K	51	X	Y	Z	W
Solenoid operated valves 3-way 2-positions Common cavity size 08 Cartridge style in manifold						
	10					
	20					
	30					
	11					
						Manifold material
						00 Aluminium
						S0 Steel
						Manifold port sizes
						09 G 1/4
						02 G 3/8
						Cartridge seals and accessories options
						0 = With buna seal
						V = With Viton seal
						Cartridge options
						A = Standard
						D = Knob style manual override
						Common cavity size 08