

Intermediate Elements

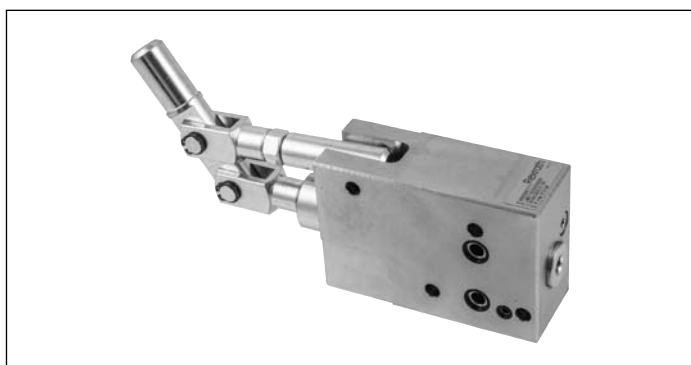
Intermediate elements with double acting hand pump

EPM-DE-18

RE 18301-20

Edition: 09.2018

Replaces: 02.2016



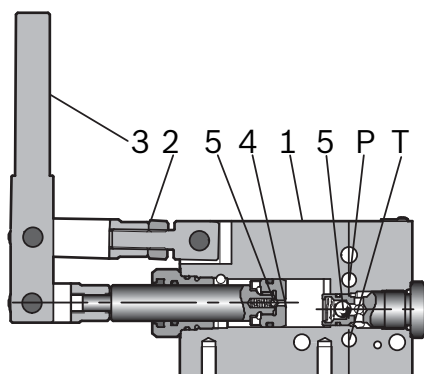
Description

It is recommended to install this intermediate plate with auxiliary hand pump between the inlet plate and the ED modular directional valves.

It is also recommended that the intermediate plate with auxiliary hand pump is under head.

When used with LS directional valve, please provide a mean to close the LS signal going to the pump.

When used with open center compensator (e.g. TE-06) select a compensator that can be locked in closed position.



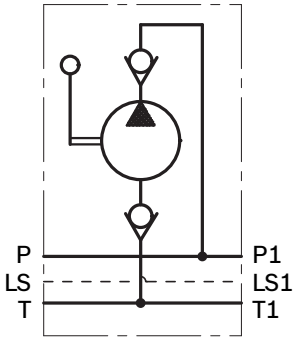
Technical data

| General | | |
|--|---|--|
| Weight of the EPM (hand pump slice) | kg (lbs) | 3.7 (8.2) |
| Weight of the extension lever | kg (lbs) | 0.7 (1.5) |
| Ambient Temperature | °C (°F) | -20....+50 (-4....+122) (NBR seals) |
| Hydraulic | | |
| Maximum resistance pressure | bar (psi) | 310 (4500) |
| Maximum generated pressure | bar (psi) | 250 (3625) |
| Total displacement | cc (in ³) | 18 (1.08) |
| Opening displacement | cc (in ³) | 8.5 (0.51) |
| Closing displacement | cc (in ³) | 9.5 (0.57) |
| Maximum aspiration height | m (ft) | 1.5 (4.92) (with pipe DN6) |
| Hydraulic fluid General properties: it must have physical lubricating and chemical properties suitable for use in hydraulic systems such as, for example: | Mineral oil based hydraulic fluids HL (DIN 51524 part 1). Mineral oil based hydraulic fluids HLP (DIN 51524 part 2). For use of environmentally acceptable fluids (vegetable or polyglycol base) please consult us. | |
| Fluid Temperature | °C (°F) | -20....+80 (-4....+176) (NBR) |
| Permissible degree of fluid contamination | ISO 4572: $\beta_{x \geq 75} X = 12 \dots 15$ ISO 4406: class 20/18/15 NAS 1638: class 9 | |
| Viscosity range | mm ² /s | 5....420 |
| Maximum internal leakage | cc/min (in ³ /min) | 0.2 (0.012) |

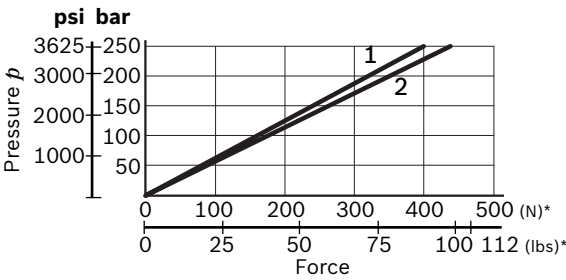
Note

For applications with different specifications consult us.

Symbol



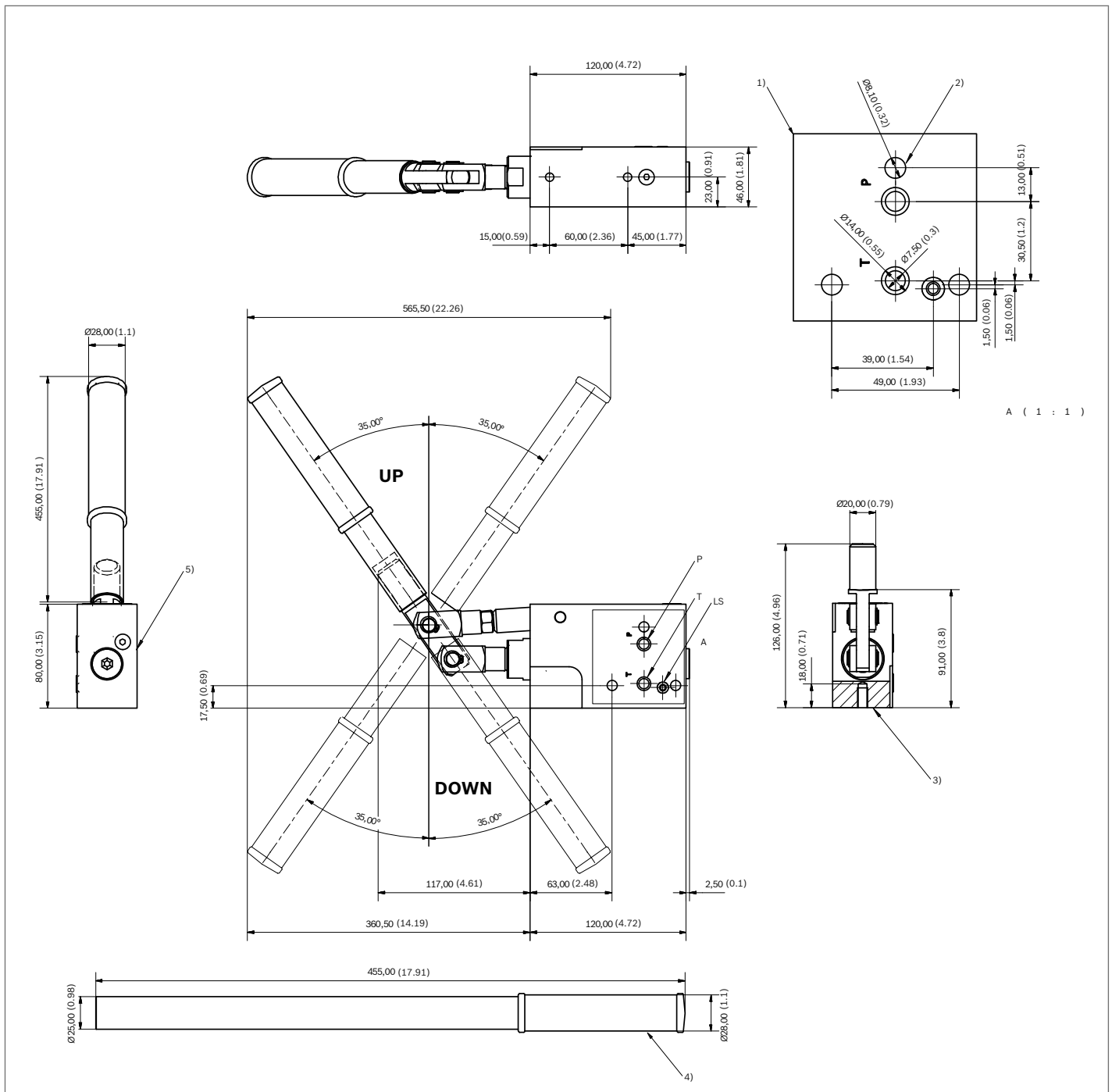
Characteristic curves



1: Opening stroke.
2: Closing stroke.
* Force applied by operator using our extension lever, length 457.5 mm (18 inch).

Ordering details

| Code | Description | Material Number |
|-----------------|------------------------------------|-----------------|
| L88710000000000 | HAND PUMP ED (LEVER POINTING UP) | R930067711 |
| L88710000000001 | EXTENTION LEVER FOR HAND PUMP ED | R930067712 |
| L88710000000002 | HAND PUMP ED (LEVER POINTING DOWN) | R930069614 |

External dimensions and fittings

- 1) Flange specifications for coupling to ED intermediate elements.
- 2) For tie rod and tightening torque information see data sheet RE 18301-90.

- 3) N° 2 Fixing Hole. M8. tightening torque 35-40 Nm. (26-29.5ft-lbs).
- 4) Optional extension lever. (See ordering code).
- 5) Side of position of inlet plate.