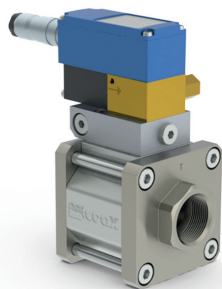


03/2022



⚠ Above stated body materials refer to the valve port connections that get in contact with the media only!

details needed for main valve

- orifice
- port
- pressure regulating range
- flow rate
- media
- media temperature
- ambient temperature

details needed for proportional valve

- nominal voltage
- actuation pressure range min/max
- setpoint signal

⚠ The valves' technical design is based on media and application requirements. This can lead to deviations from the general specifications shown on the data sheet with regards to the design, sealing materials and characteristics.

⚠ If order or application specifications are incomplete or imprecise there exists a risk of an incorrect technical design of the valve for the required application. As a consequence, the physical and / or chemical properties of the materials or seals used, may not be suitable for the intended application. To avoid hydraulic shocks in pipelines, the flow velocities must be taken into account when designing valves for liquids.

control valve proportional

pressure range

orifice

connection

function

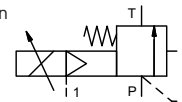
externally controlled

PN 5-120 bar

DN 15 mm

thread

stepless pressure regulation



operating principle

body material

externally controlled with spring return

- | | |
|--------------------|---|
| ① | ④ |
| ② steel galvanized | ⑤ |
| ③ | ⑥ |

valve seat

metal on metal

seal materials

FPM, PTFE

general specifications

options

ports

SPB threads G 1

SAE connections DIN ISO 6162

function

stepless pressure regulation

pressure regulation range

bar 5-120

flow rate

m³/h 6,0

media

liquid - highly viscous - contaminated

abrasive media

flow direction

P → T as marked

settling time

ms < 900

media temperature

°C 0 to +60

ambient temperature

°C 0 to +50

approvals

mounting

mounting holes

weight

kg 2,7

additional equipment

actuation pressure gauge

electrical specifications

options

nominal voltage

U_B DC 24 V (max. residual ripple 10 %)

current consumption

DC < 0,7 A

control signals

U_E 0-10 V (RE 100 KΩ) 4-20 mA (RE 250 KΩ)

protection

IP65 (P54) acc. DIN 40050

energized duty rating

ED 100 % (observe the connection conditions accordingly)

connection

plug with 7 contacts / wire diameter 6-8 mm

pneumatic specifications

options

actuation pressure range

bar see actuation pressure-diagram

compressed air

DIN ISO 8573-1 grade of compressed air quality 5/4/3

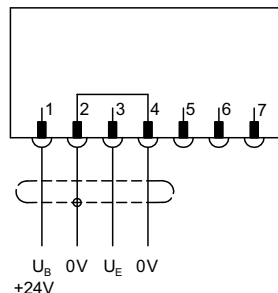
control

via 3/2 way proportional valve

actuator ports

1 G 1/8

connection plan /



connection conditions

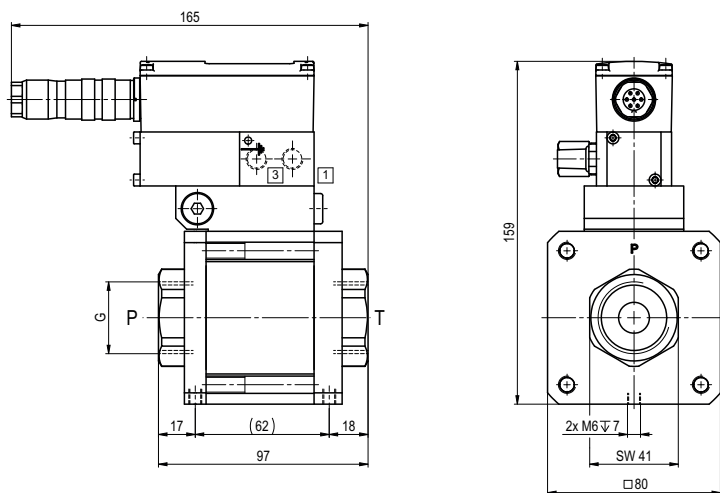
When supplying the electrical set point signal to the proportional valve, the actuating air must already be present. (see actuation pressure-diagram).

position of installation

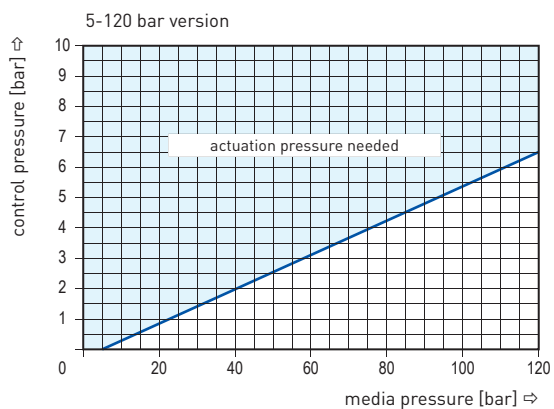
arbitrary, but regulator not downwards.

coax® data sheet - pressure limitation valve

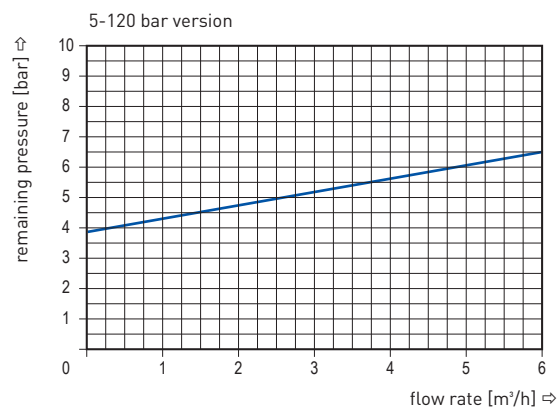
type SPB-H 15



actuation pressure-diagram



pressureless circulation mode



Sound creation during low pressure circulation mode and flow $Q = 6 \text{ m}^3/\text{h}$ ca. 70 dbA