



The product is installed in these energy transmission lines:

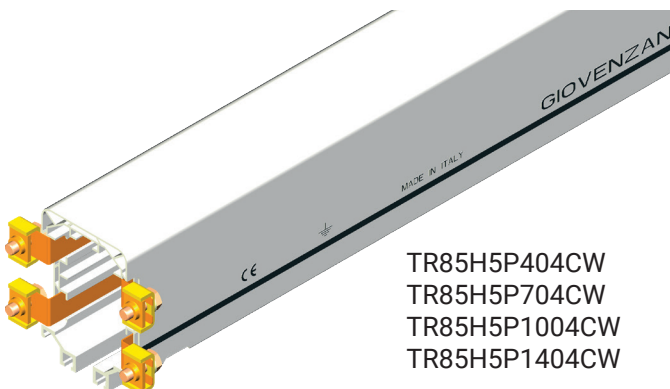
TR85H5P pre-mounted

Please find the relevant reference guides on our instruction manuals page:

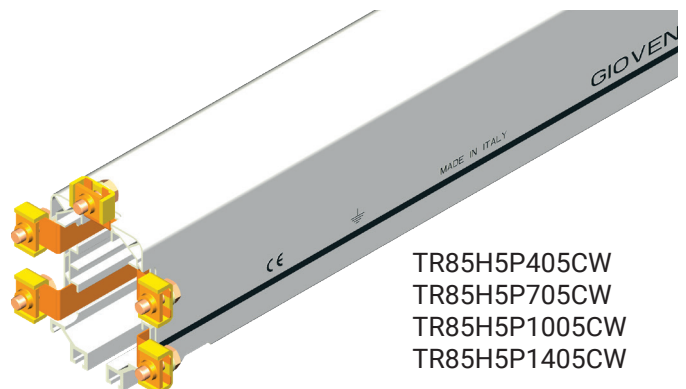
TR85H5P...4CW

TR85H5P...5CW

BUSBAR

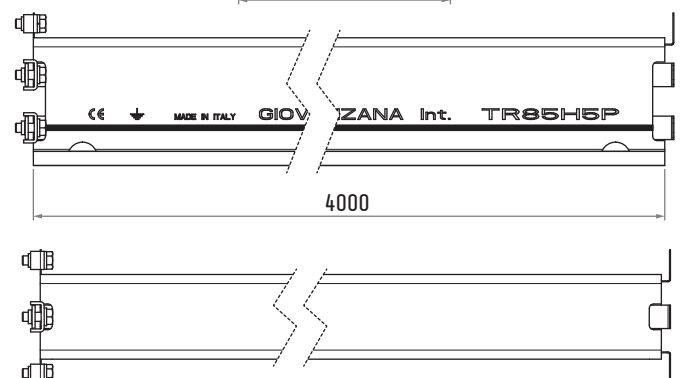
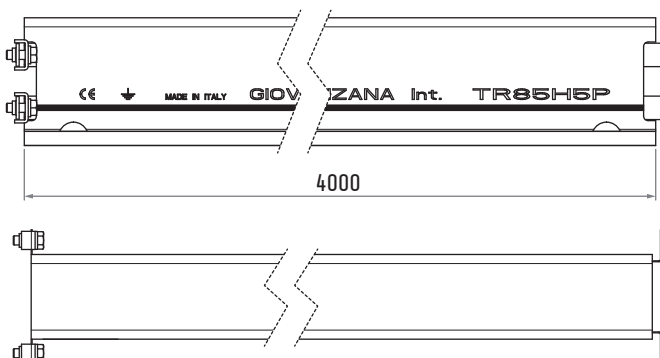
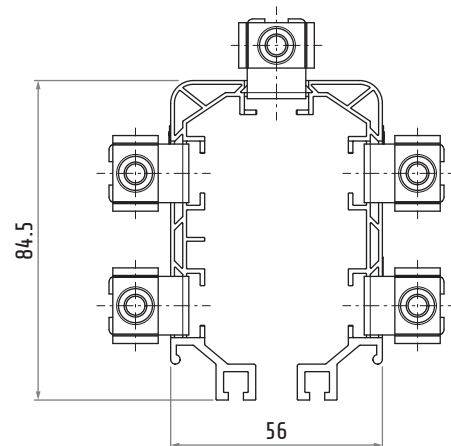
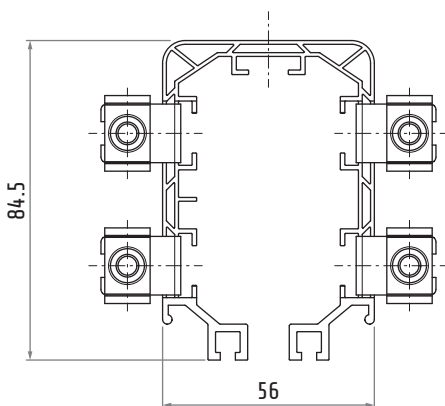


TR85H5P404CW
TR85H5P704CW
TR85H5P1004CW
TR85H5P1404CW



TR85H5P405CW
TR85H5P705CW
TR85H5P1005CW
TR85H5P1405CW

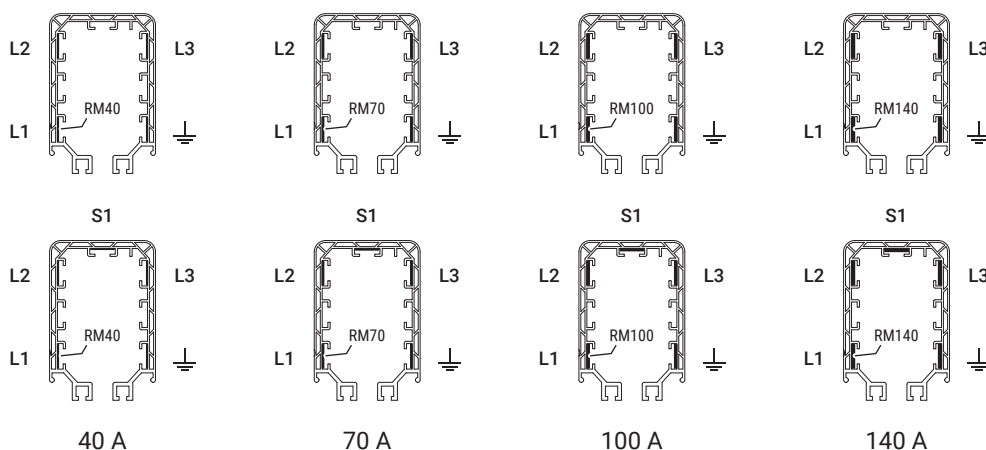
Custom curved bars available on request (with 4 conductors only and with a minimum radius of 1000 mm).



Dimensions in mm / illustrations NOT in scale

Conductors	4	TR85H5P404CW	TR85H5P704CW	TR85H5P1004CW	TR85H5P1404CW
	5	TR85H5P405CW	TR85H5P705CW	TR85H5P1005CW	TR85H5P1405CW
Conductors material		ETP copper	ETP copper	ETP copper	ETP copper
Rated current	23°C	40 A	70 A	100 A	140 A
Rated operating voltage	Ue	600 V AC	600 V AC	600 V AC	600 V AC
Frequency		50 Hz	50 Hz	50 Hz	50 Hz
Short circuit current		10 kA	10 kA	10 kA	10 kA
Class gG fuse rating		40 A	70 A	100 A	140 A
Resistance		$18.27 \cdot 10^{-4} \Omega/\text{m}$	$10.96 \cdot 10^{-4} \Omega/\text{m}$	$7.83 \cdot 10^{-4} \Omega/\text{m}$	$5.48 \cdot 10^{-4} \Omega/\text{m}$
Impedance		$18.36 \cdot 10^{-4} \Omega/\text{m}$	$11.01 \cdot 10^{-4} \Omega/\text{m}$	$7.87 \cdot 10^{-4} \Omega/\text{m}$	$5.55 \cdot 10^{-4} \Omega/\text{m}$
Conductors section		9.3 mm ² 15.5 × 0.6 mm	15.5 mm ² 15.5 × 1 mm	23.25 mm ² 15.5 × 1.5 mm	31 mm ² 15.5 × 2 mm
Weight of busbar	4	1.40 kg/m	1.65 kg/m	1.95 kg/m	2.25 kg/m
complete of conductors	5	1.50 kg/m	1.80 kg/m	2.15 kg/m	2.55 kg/m

Possible configurations



Busbar

Material		rigid PVC
Self-extinguish	UL94 DIN 4102 D.M. 6/7/83	V0 B2 CI
Ultimate tensile strenght	ISO R527 @ 23°C	430 kg/cm ³
Yield point	ISO R527 @ 23°C	460 kg/cm ³
Modulus of elasticity	ISO R178 @ 23°C	30000 kg/cm ³
Impact resistance	DIN 53453	unbroken
Dielectric strenght	ASTM 149	25 kV/mm
Softening temperature - Vicat	ISO R306 49N	82°C
Protection class	CEI EN 60529	IP13 IP44 with gasket
Flammability resistance	UL94 CEI EN 60695-2-1	V0 960°C
Ambient temperature	operating storage	-30 ... +55°C -30 ... +70°C
Admissible trolley speed	max	200 m/min