

# 5/2-directional valve, Series CD04

- 5/2
- Qn = 900 l/min
- Pilot valve width : 26 mm
- Pipe connection
- Compressed air connection output : G 1/8
- Electrical connection : Plug, EN 175301-803, form B, 3-pin
- Manual override : with detent
- double solenoid
- Pilot : Internal External



Version	Spool valve, positive overlapping
Activation	Electrically
Sealing principle	Soft sealing
Working pressure min./max.	See table below
Control pressure min./max.	2 ... 10 bar
Ambient temperature min./max.	-15 ... 50 °C
Medium temperature min./max.	-15 ... 50 °C
Medium	Compressed air
Max. particle size	50 µm
Oil content of compressed air	0 ... 1 mg/m³
Nominal flow Qn	900 l/min
Nominal flow 1 ► 2	900 l/min
Nominal flow 2 ► 3	900 l/min
Compressed air connection	according to ISO 228-1
Pilot control exhaust	with directional pilot air exhaust
Connector standard	EN 175301-803:2006
Protection class with connection	IP65
Compatibility index	14
Duty cycle	100 %
Mounting on manifold strip	P-strip
Weight	See table below

## Technical data

Part No.		MO	Compressed air connection
			Input
R412008841			G 1/8
5777250220			G 1/8
5777255280			G 1/8
5777255302			G 1/8
5777260220			G 1/8
5777265280			G 1/8
5777265302			G 1/8

Part No.	Compressed air connection	Compressed air connection
	Output	Exhaust
R412008841	G 1/8	G 1/8
5777250220	G 1/8	G 1/8
5777255280	G 1/8	G 1/8
5777255302	G 1/8	G 1/8
5777260220	G 1/8	G 1/8
5777265280	G 1/8	G 1/8
5777265302	G 1/8	G 1/8

Part No.	Compressed air connection	Compressed air connection
	Pilot Input	Pilot Exhaust
R412008841	-	M5
5777250220	-	M5
5777255280	-	M5
5777255302	-	M5
5777260220	G 1/8	M5
5777265280	G 1/8	M5
5777265302	G 1/8	M5

Part No.	Operational voltage	Operational voltage	Operational voltage
	DC	AC 50 Hz	AC 60 Hz
R412008841	12 V	-	-
5777250220	24 V	-	-
5777255280	-	230 V	230 V
5777255302	-	-	-
5777260220	24 V	-	-
5777265280	-	230 V	230 V
5777265302	-	-	-

Part No.	Voltage tolerance	Voltage tolerance	Voltage tolerance	Power consumption
	DC	AC 50 Hz	AC 60 Hz	DC
R412008841	-10% / +10%	-	-	4.6 W
5777250220	-10% / +10%	-	-	4.8 W
5777255280	-	-20% / +10%	-10% / +20%	-
5777255302	-	-	-	-
5777260220	-10% / +10%	-	-	4.8 W
5777265280	-	-20% / +10%	-10% / +20%	-

Part No.	Voltage tolerance	Voltage tolerance	Voltage tolerance	Power consumption
	DC	AC 50 Hz	AC 60 Hz	DC
5777265302	-	-	-	-

Part No.	Holding power	Holding power	Switch-on power	Switch-on power	Pilot
	AC 50 Hz	AC 60 Hz	AC 50 Hz	AC 60 Hz	
R412008841	-	-	-	-	Internal
5777250220	-	-	-	-	Internal
5777255280	7.9 VA	6.4 VA	10.6 VA	8.9 VA	Internal
5777255302	-	-	-	-	Internal
5777260220	-	-	-	-	External
5777265280	7.9 VA	6.4 VA	10.6 VA	8.9 VA	External
5777265302	-	-	-	-	External

Part No.	Working pressure min./max.	Typ. switch-on time	Typ. switch-off time
R412008841	2 ... 10 bar	12 ms	12 ms
5777250220	2 ... 10 bar	12 ms	12 ms
5777255280	2 ... 10 bar	12 ms	12 ms
5777255302	2 ... 10 bar	-	-
5777260220	-0.95 ... 10 bar	12 ms	12 ms
5777265280	-0.95 ... 10 bar	12 ms	12 ms
5777265302	-0.95 ... 10 bar	-	-

Part No.	basic valve with electrical connector	Weight
R412008841	-	0.49 kg
5777250220	-	0.49 kg
5777255280	-	0.49 kg
5777255302	Basic valve without coil	0.36 kg
5777260220	-	0.5 kg
5777265280	-	0.5 kg
5777265302	Basic valve without coil	0.36 kg

Nominal flow Q<sub>n</sub> at 6 bar and Δp = 1 bar, MO = Manual override

## Technical information

The min. control pressure must be adhered to, since otherwise faulty switching and valve failure may result!

The pressure dew point must be at least 15 °C under ambient and medium temperature and may not exceed 3 °C .

The oil content of compressed air must remain constant during the life cycle.

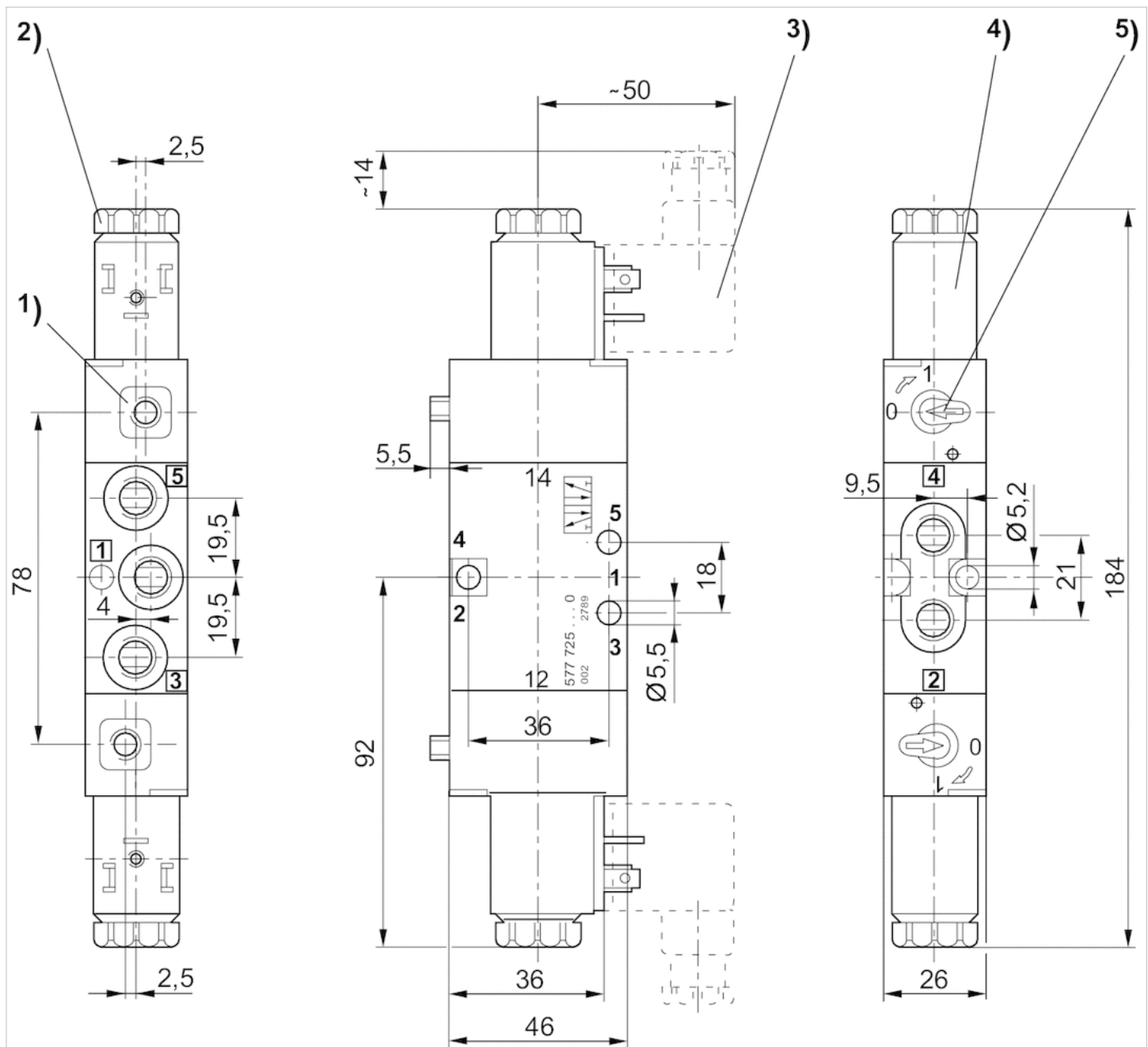
Use only the approved oils from AVENTICS. Further information can be found in the "Technical information" document (available in the MediaCentre).

## Technical information

Material	
Housing	Die cast zinc Polyamide fiber-glass reinforced
Seals	Acrylonitrile butadiene rubber

## Dimensions

### Dimensions



- 1) Only with separate pilot control G 1/82) After removal of cap M5 internal thread3) Valve plug connector can be plugged at 180° intervals4) Coil can be rotated at 90° intervals5) Manual override