

Solenoid operated valves 2-way 2-positions

Common cavity size 08

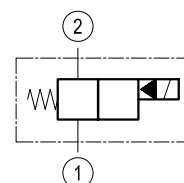
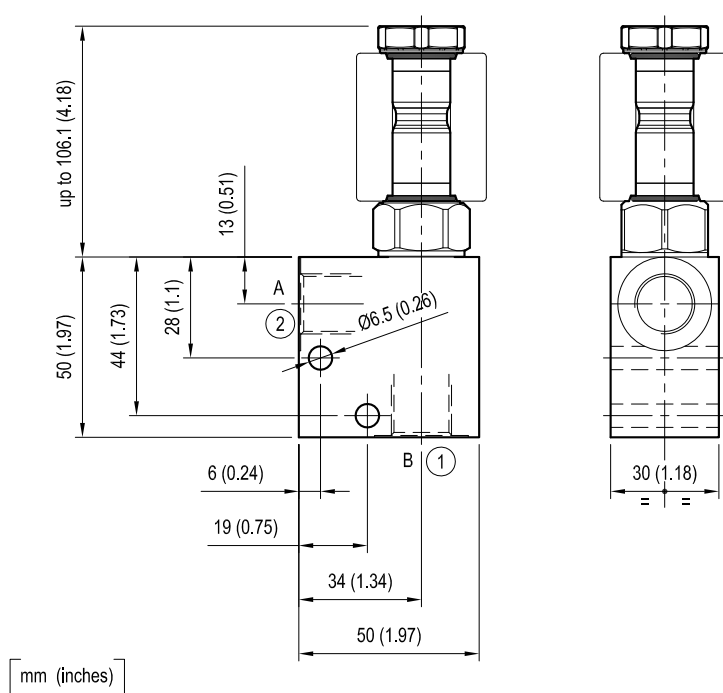
Cartridge style in manifold

VEI-CS-16-08A

OS.15 - K - 18 - X - Y - Z - W

RE 18331-65

Edition: 12.2016



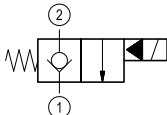
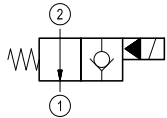
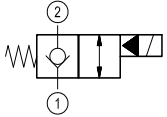
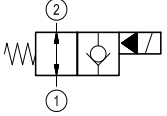
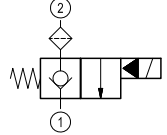
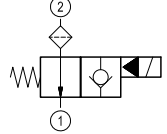
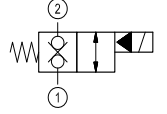
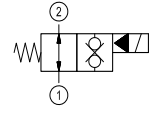
Cartridge schemes (K)

monodirectional type	bidirectional type
01	05
02	06
07	31
08	32

Technical data

Max. flow	40 l/min (11 gpm)
Max. operating pressure for steel body	350 bar (5000 psi)
Max operating pressure for aluminium body	210 bar (3000 psi)
Ambient temperature range	-30 to 90 °C (-22 to 194 °F)
Fluids: Mineral-based or synthetics with lubricating properties at viscosities of 20 to 380 mm ² /s (cSt)	
MTTFd	150 years see RE 18350-51
To order manifold only, see data sheet RE 18325-85	
Other technical data	See data sheet 18350-50

Ordering code

OS.15		K	18	X	Y	Z	W
Solenoid operated valves 2-way 2-positions Common cavity size 08 Cartridge style in manifold							
		01					
		02					
		05					
		06					
		07					
		08					
		31					
		32					
		</					