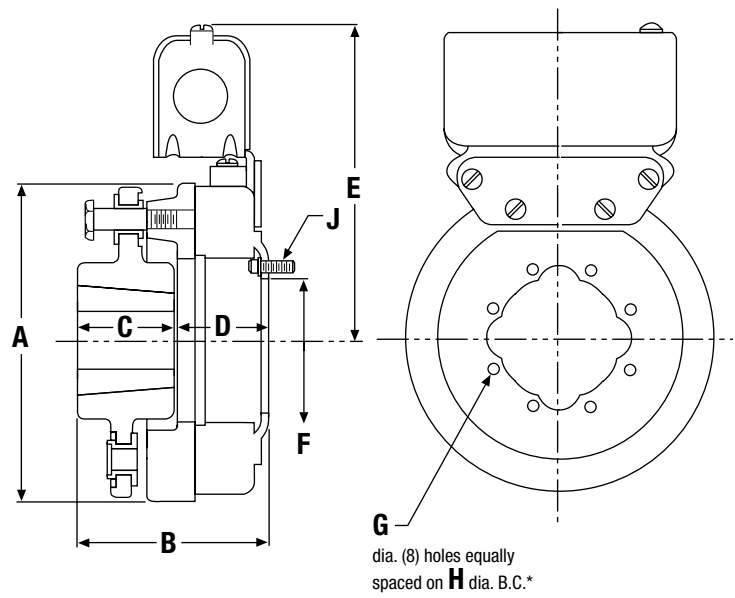


Basic Tension Brake Dimensions and Parts List

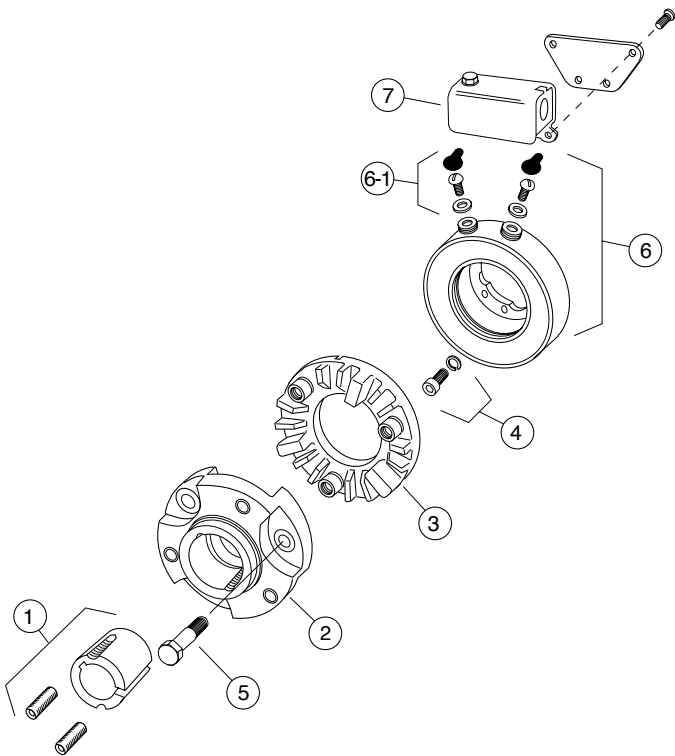
TB-500



() denotes millimeters
All dimensions nominal unless specified.

*Mounting holes are within .010" (.254) of true position relative to pilot diameter.

Model	A Max.	B Max.	C	D	E Max.	F	G	H	J
TB-500	5.125 (130.18)	3.140 (79.77)	1.500 (38.10)	1.594 (40.48)	5.062 (128.59)	2.062 (52.39)	.208/.201 (5.28/5.11)	2.375 (60.33)	#8-32 UNC-3A



Bore, Bushing, Keyway Data

Model	Bushing	Bore Dia.	Keyway
TB-500	Dodge #1215	1/2-9/16 (12.70/14.28)	1/8 x 1/16 (3.18 x 1.59)
		5/8-7/8 (15.88-22.22)	3/16 x 3/32 (4.76 x 2.38)
		15/16-1-1/4 (23.81-31.75)	1/4 x 1/8 (6.35 x 3.18)

Parts

Item No.	Description	Part Number
1	Bushing Taperlock*	180-0116 to 180-0128
2	Hub, Armature	5300-541-004
3	Armature	110-0047
4	Magnet Mounting Acc.	
	Inside Mounted	5102-101-001
	Outside Mounted	5300-101-008
5	Drive Pin (3)	5300-101-003
6	Magnet	
	6 Volt I.M.	5300-631-019
	6 Volt O.M.	5300-631-024
	24 Volt I.M.	5300-631-040
6-1	Terminal Accessory	5311-101-001
7	Conduit Box	5200-101-010

*Each one digit increase in part number signifies a 1/16" (1.588) bushing bore size increase.