

Pressure reducing, pilot operated spool type

Common cavity, Size 10

VRPP-10A

04.93.06 - X - 85 - Z

RE 18318-50

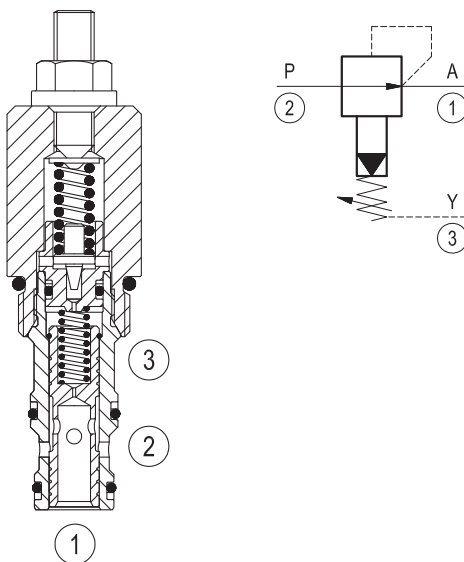
Edition: 01.2019

Replaces: 11.2018



Description

Initially, flow passes freely from 2 to 1. When the pressure at 1 exceeds the pressure setting, the valve acts to restrict input flow at 2. This increases the pressure drop through the valve and maintains consistent pressure at 1. The spring chamber is drained at 3 to prevent a build-up of back-pressure against the spool.

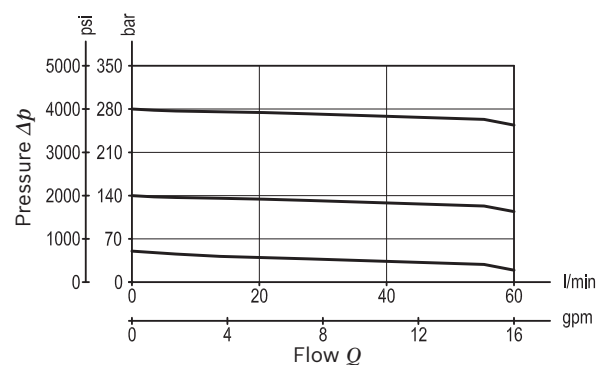


Technical data

| | |
|---|--|
| Max. operating pressure port 2 (P) | 350 bar (5000 psi) |
| Max. pressure admitted port 1 (A) | 280 bar (4000 psi) |
| Max. flow | 60 l/min (16 gpm) |
| Standard internal pilot orifice diameter | 0.6 mm |
| Fluid temperature range | -30 to 100 °C (-22 to 212 °F) |
| Installation torque | 41 - 47 Nm (30 - 35 ft-lbs) |
| Weight | 0.21 kg (0.46 lbs) |
| MTTFD | 150 years see RE 18350-51 |
| Cavity | CA-10A-3N (see data sheet 18325-70) |
| Lines bodies and standard assemblies | Please refer to section "Hydraulic integrated circuit" or consult factory |
| Seal kit ¹⁾ | Code: RG10A3010520100 material no: R901111369 |
| Fluids | Mineral-based or synthetics with lubricating properties at viscosities of 10 to 500 mm ² /s (cSt) |
| Recommended degree of fluid contamination | Nominal value max. 10µm (NAS 8) / ISO 4406 20/18/15 |
| Installation position | No restrictions |
| Other Technical Data | See data sheet 18350-50 |

1) Only external seals for 10 valves

Characteristic curve



Ordering code

| | | | | | |
|----------|---|----|---|----|---|
| 04.93.06 | X | 85 | Z | 00 | * |
|----------|---|----|---|----|---|

Relief, pilot operated spool type

Adjustments

03 Leakproof hex. socket screw

04 Handknob and locknut

85 Common cavity, Size 10

Series 0/A to L
unchanged performances and dimensions

Version and options standard

| | | SPRINGS | | |
|--------------|-----------|--------------------------------|--|---|
| | | Adj. press. range bar (psi) | Pressure increase bar/turn (psi/turn) | Std. setting bar (psi) (reduc mode) |
| for X= 03 | 10 | 35-140 (500-2000) | 48 (696) | 100 (1450) |
| | 20 | 70-280 (1000-4000) | 88 (1276) | 200 (2900) |
| for X= 04 | 35 | 35-350 (500-5000) | 68 (986) | 280 (4000) |

Note: Special settings available. Contact factory authorized representative for ordering code.

Preferred types

| Type | Material number |
|-----------------|-----------------|
| 049306038510000 | R901104112 |
| 049306038520000 | R901104113 |
| 049306048535000 | R930005676 |

| Type | Material number |
|------|-----------------|
| | |
| | |
| | |
| | |

Dimensions

