

Quick exhaust valve



AVENTICS™ Quick exhaust valve



Quick exhaust valve

- material housing: aluminum
- Qn 1→2 = 1700-11950 l/min
- Qn 2→3 = 2500-13450 l/min



Version	Poppet valve
Working pressure min./max.	10.3 bar
Ambient temperature min./max.	-40 ... 71 °C
Medium temperature min./max.	-40 ... 71 °C
Medium	Compressed air

Technical data

Part No.	Port 1 Input	Port 2 Output	Compressed air connection pilot air	Flow rate value Qn 1→2
R431003038	1/4" NPTF	1/4" NPTF	3/8 NPTF	1700 l/min
R431003043	1/4" NPTF	1/4" NPTF	3/8 NPTF	1700 l/min
R431003039	3/8 NPTF	3/8 NPTF	3/8 NPTF	2230 l/min
R431003044	3/8 NPTF	3/8 NPTF	3/8 NPTF	2230 l/min
R431003040	1/2 NPTF	1/2 NPTF	1/2 NPTF	5000 l/min
R431003041	3/4" NPTF	3/4" NPTF	3/4" NPTF	9700 l/min
R431003042	1" NPTF	1" NPTF	1" NPTF	11950 l/min

Part No.	Flow rate value Qn 2→3	Fig.
R431003038	2500 l/min	Fig. 1
R431003043	2500 l/min	Fig. 2
R431003039	3080 l/min	Fig. 1
R431003044	3080 l/min	Fig. 2
R431003040	5500 l/min	Fig. 1
R431003041	10550 l/min	Fig. 1
R431003042	13450 l/min	Fig. 1

Sizes 1/2" through 1" have integral mounting brackets., Mounting bracket for 1/4" and 3/8" models: material no. R431003093

Technical information

Repair kits include diaphragm and gasket.

Dimensions

Dimensions in inches, QRV-Aluminum

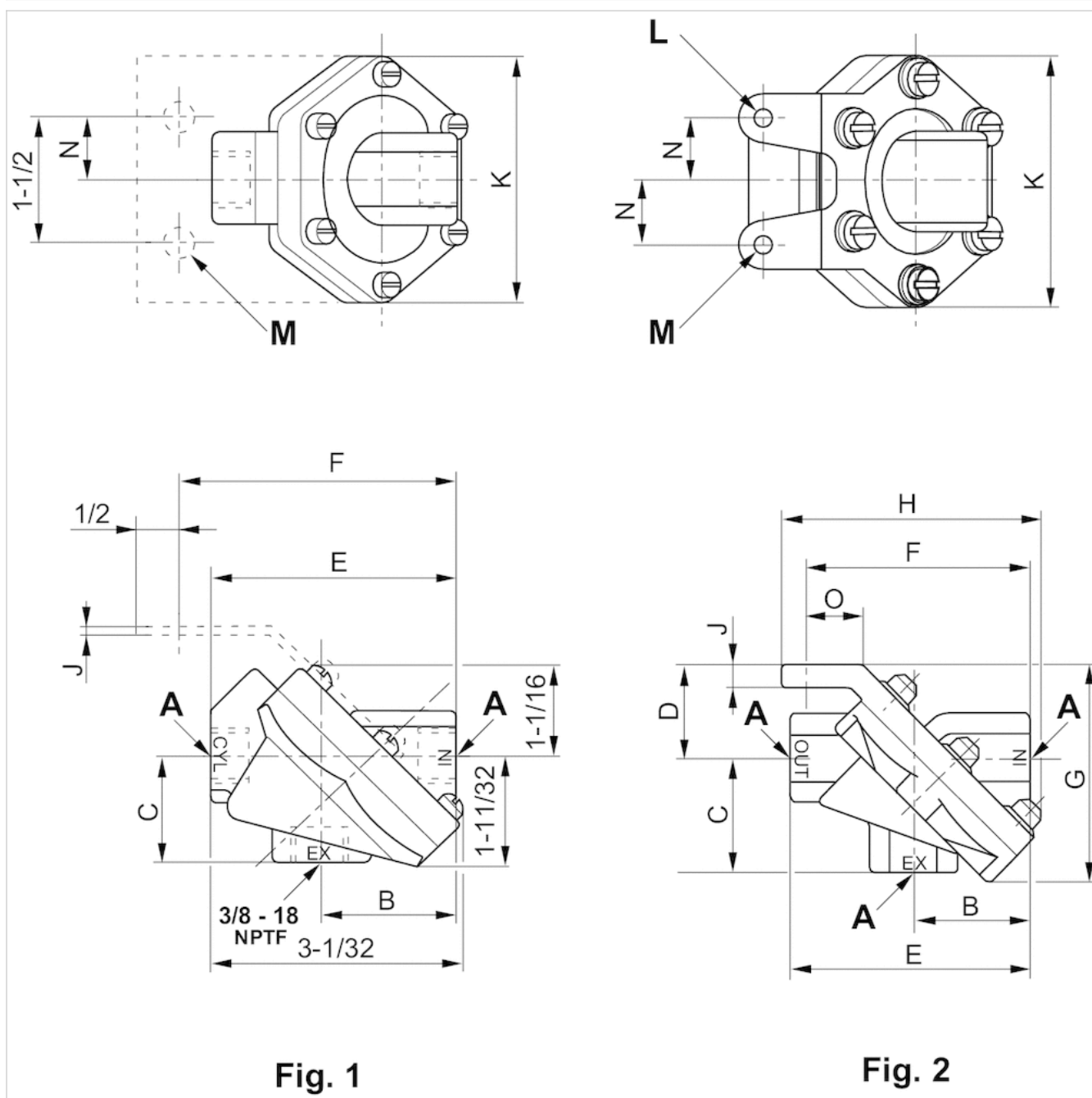


Fig. 1 Inline version

Fig. 2 Right angle version

Dimensions in inches

	A	B	C	D	E	F	G	H	J	K
Fig. 1	1/4 - 18	1 3/4	1 11/32	—	3	3 3/8	—	—	1/16	3
Fig. 1	3/8 - 14	1 3/4	1 11/32	—	3	3 3/8	—	—	1/16	3
Fig. 2	1/2 - 14	1 3/4	1 11/32	1 1/2	3 11/16	3 7/16	3 15/32	4 1/8	3/8	3 15/16
Fig. 2	3/4 - 14	2 11/16	2 21/32	2 1/16	5 1/4	5	4 13/16	5 1/2	7/16	6 1/2
Fig. 2	1" - 11 1/2	2 11/16	2 21/32	2 1/16	5 1/4	5	4 13/16	5 1/2	7/16	6 1/2

L	M (x2)	N	O
—	11/32 Ø	3/4	—
—	11/32 Ø	3/4	—
3/8 R	9/32 Ø	1	7/8
1/2 R	13/32 Ø	1 1/2	1 1/8
1/2 R	13/32 Ø	1 1/2	1 1/8

Quick exhaust valve

- Polymer body for corrosion resistance
- Qn 1→2 = 1540-2300 l/min
- Qn 2→3 = 1840-2760 l/min



Version	Poppet valve
Working pressure min./max.	10.3 bar
Ambient temperature min./max.	-29 ... 71 °C
Medium temperature min./max.	-29 ... 71 °C
Medium	Compressed air

Technical data

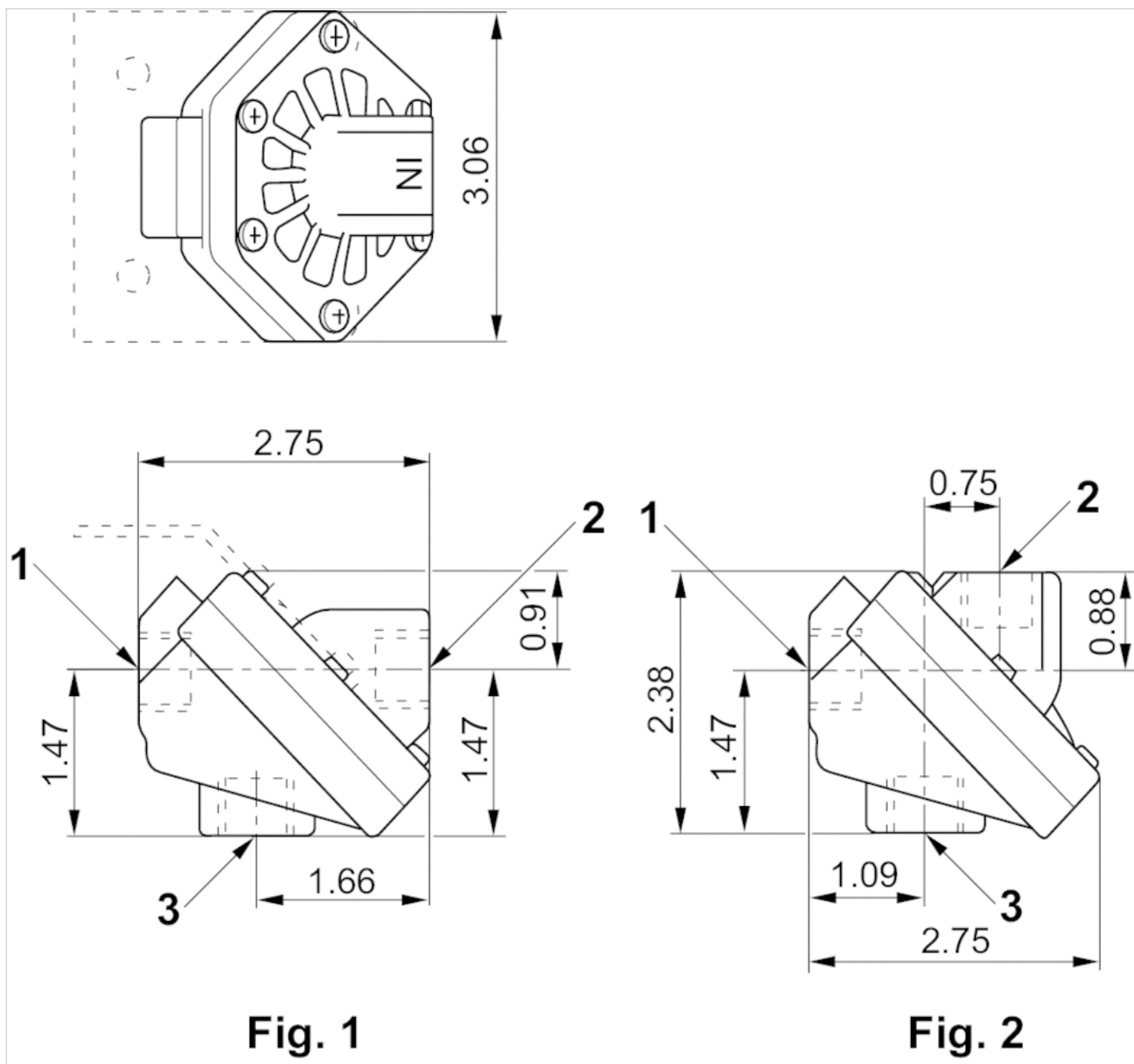
Part No.	Port 1 Input	Flow rate value Qn 1→2	Flow rate value Qn 2→3	Fig.
R431007444	1/4" NPTF	1540 l/min	1840 l/min	Fig. 1
R431007446	1/4" NPTF	1540 l/min	2760 l/min	Fig. 1
R434001677	1/4" NPTF	2300 l/min	2760 l/min	Fig. 1
R431007445	3/8 NPTF	2300 l/min	2760 l/min	Fig. 2
R431007447	3/8 NPTF	2300 l/min	2760 l/min	Fig. 2

Technical information

High exhaust flow capacity
 Light weight for mounting in piping system
 Polymer body for corrosion resistance
 Special corrosion resistant version with stainless steel hardware available
 The polymer quick exhaust valve is normally mounted directly in the piping. A mounting bracket (part no. R431003093) is as an accessory if required.

Dimensions

Dimensions in inches, QRV-Polymer



1) OUT port

2) IN port = pressure supply

3) Exhaust 3/8" NPT

Fig. 1 Inline version

Fig. 2 Right angle version

If needed, a mounting bracket may be ordered separately.