

## VALVES IN PHASE OUT

Valves replaced by new VEI-16 (RE18323-25)

Solenoid operated valves pilot operated poppet type  
2-way normally closed  
Common cavity, Size 08

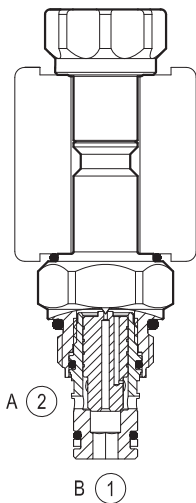
VEI-8I-06-NC

OD.15 - X - 18 - Y - S0

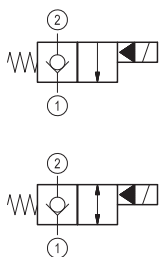
**RE 18323-01**

Edition: 03.2016

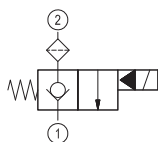
Replaces: 01.2015



### ▼ Version 1



### ▼ Version 2



## Technical data

General		
Weight		0.11 kg (0.24 lbs)
Installation orientation		Optional
Ambient temperature range		-30 to 60 °C (-22 to 140 °F)
Hydraulic		
Max. operating pressure		350 bar (5000 psi)
Max. proof pressure		420 bar (6000 psi)
Flow range		0.5 - 30 l/min (0.1 - 8 gpm)
Fatigue cycle life		1 million cycles at 350 bar
Max. internal leakage		20 drops/min.
Fluid temperature range		-20 to 80 °C (-4 to 176 °F)
Fluids: Mineral-based or synthetics with lubricating properties at viscosities of 20 to 380 mm <sup>2</sup> /s (cSt)		
Installation torque		39 - 51 Nm (29 - 38 ft-lbs)
Recommended degree of fluid contamination		Nominal value max. 10 µm (NAS 8) ISO 4406 19/17/14
MTTFd		150 years see RE 18350-51
Cavity		CA-08A-2N see 18325-70
Lines bodies and standard assemblies		Please refer to section "Hydraulic integrated circuit" or consult factory
Seal kit – version 1-2	code material no.	RG08A2010520100 R901101437
Seal kit coil	code material no.	RG12I1PNBR7010 R934003957
Other technical data		See data sheet 18350-50
Electrical		
Type of voltage		DC voltage
Coil type		S8-356 see 18325-90
Supply voltage		See data sheet 18325-90
Nominal voltage		± 10%
Power consumption		20 W
Duty cycle coil		See characteristic curves %
Type of protection		See data sheet 18325-90
Note: Coils must be ordered separately		

**Ordering code**

<b>OD.15</b>		<b>X</b>	<b>18</b>	<b>Y</b>	<b>S0</b>
--------------	--	----------	-----------	----------	-----------

Solenoid operated valves  
pilot operated poppet type  
2-way normally closed

monodirectional type

01

---

bidirectional type

05

---

monodirectional type with filter

07

Tube not welded

standard type

3I

knob style manual override

3M

Cable operated pull style override

3C

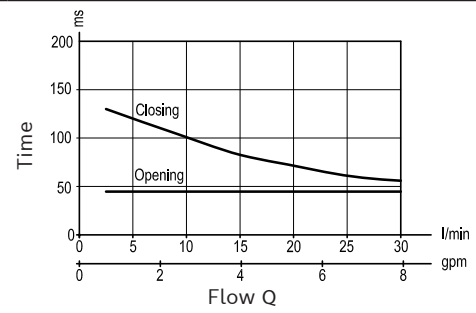
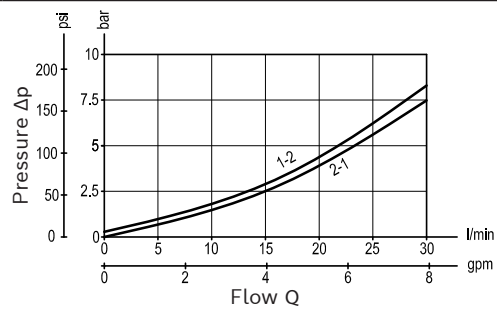
Common cavity: CA-08A-2N

Type	Material number
OD1501183IS000	R901090962
OD1501183MS000	R901090966
OD1505183IS000	R901090953
OD1505183MS000	R901090950
OD1507183IS000	R901091142
OD1507183MS000	R934003486

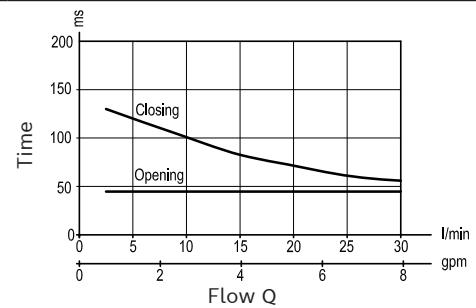
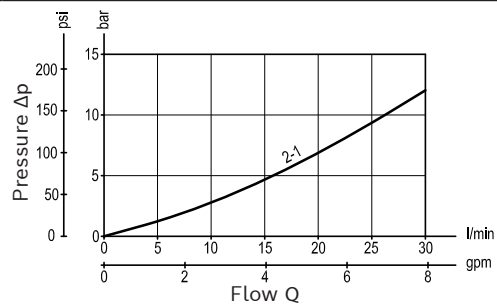
Type	Material number
OD1507183CS000	R930054706

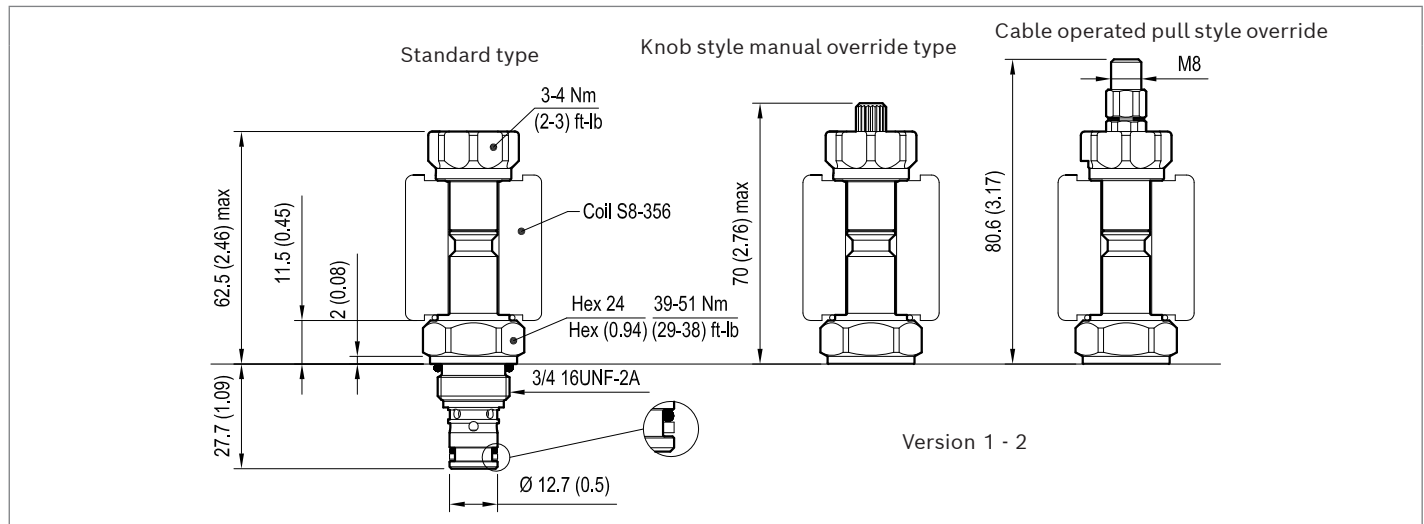
**Characteristic curves****Version 1**

Standard

**Version 2**

Standard



**Dimensions**▼ **Version 1: Solenoid operated valve, poppet 2-way  
normally closed**▼ **Version 2: Solenoid operated valve, poppet 2-way  
normally closed - filter**