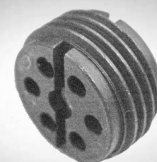


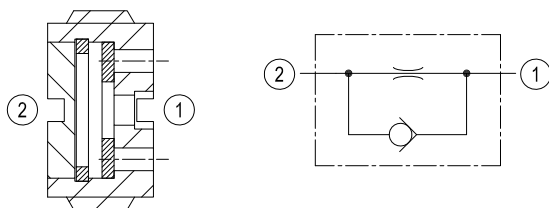
Insert type Flow control, restrictor with reverse flow check

GSU1

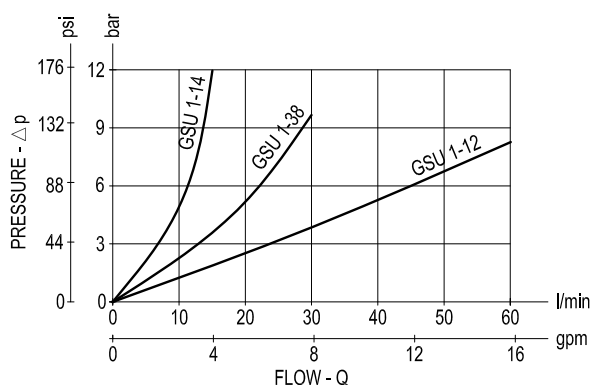


Description

The "B-A" flow is restricted by a calibrated orifice while flow "A-B" is always allowed through the incorporated check valve. Pressure compensation is not provided and flow depends from pressure drop and viscosity. The GSU1 cartridge is available in different orifice sizes.



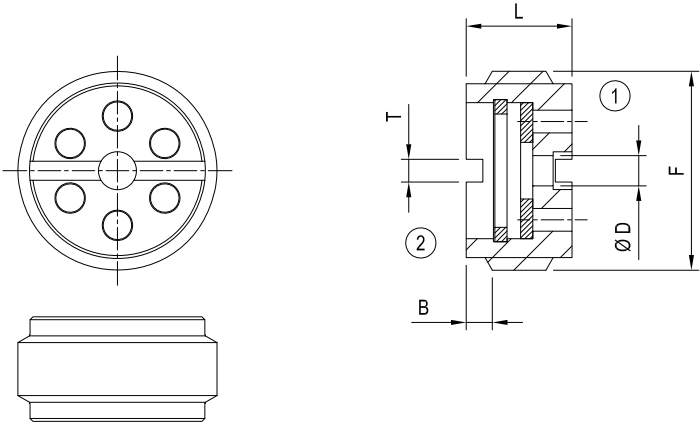
Performance



Technical data

Max. operating pressure	bar (psi)	300 (4300)
Max. flow	l/min. (gpm)	see "Regulated flow range" table
Fluid temperature range	°C (°F)	-30 to 100 (-22 to 212)
Weight	kg (lbs)	see "Dimensions" table
Special cavity		see "Dimensions"
Lines bodies and standard assemblies		Please refer to section "Hydraulic integrated circuit" or consult factory
Fluids		Mineral-based or synthetics with lubricating properties at viscosities of 10 to 500 mm ² /s (cSt)
Recommended degree of fluid contamination		Nominal value max. 10µm (NAS 8) ISO 4406 20/18/15
Installation		No restrictions
Other Technical Data		See data sheet RE 18350-50

Dimensions



F	L	B	T	Weight kg (lbs)	Flow max. l/min. (gpm)
G 1/4	7 (0.28)	1.1 (0.04)	2 (0.08)	0.005 (0.011)	15 (4)
G 3/8	8.5 (0.33)	1.5 (0.06)	1.5 (0.06)	0.009 (0.02)	30 (8)
G 1/2	11 (0.43)	2 (0.08)	1.5 (0.06)	0.018 (0.04)	70 (18)

Note: available also as “Sleeve valve for line mounting”
See data sheet RE 18316-02

Ordering code

GSU1 . . .				Standard hole diameter ØD mm (inches)		
Insert type - Restrictor with reverse flow check				for port = 14	for port = 38	for port = 12
				wihout hole	wihout hole	wihout hole
Port sizes				= 000	= 030	= 040
= 14 G 1/4				= 050	= 060	= 065
= 38 G 3/8				= 075	= 080	= 100
= 12 G 1/2				= 110	= 120	= 125
				= 130	= 150	= 160
				= 170	= 190	= 200
				= 220	= 250	= 300

Type	Material number
GSU1.14.000	R932500211
GSU1.14.030	R932500212
GSU1.14.040	R932500213
GSU1.14.050	R932500683
GSU1.14.060	R932500684
GSU1.14.065	R932006081
GSU1.14.075	R932500214
GSU1.14.080	R932007455
GSU1.14.100	R932500215
GSU1.14.110	R932500216
GSU1.14.120	R932500217
GSU1.14.125	R932500218
GSU1.14.150	R932500219
GSU1.14.160	R932500220
GSU1.14.170	R932500221
GSU1.14.200	R932500222
GSU1.14.250	R932500223
GSU1.38.000	R932500224
GSU1.38.050	R932500225
GSU1.38.060	R932500226

Type	Material number
GSU1.38.075	R932500227
GSU1.38.080	R932500228
GSU1.38.100	R932500229
GSU1.38.125	R932500230
GSU1.38.150	R932500231
GSU1.38.160	R932500232
GSU1.38.200	R932500233
GSU1.38.220	R932500234
GSU1.38.250	R932500235
GSU1.12.000	R932500208
GSU1.12.100	R932500209
GSU1.12.130	R932500827
GSU1.12.150	R932500814
GSU1.12.190	R932500828
GSU1.12.200	R932500815
GSU1.12.250	R932500210
GSU1.12.300	R932500816