

STAS Steel Liquid and Suction Line Filter Drier

STAS CO Steel Liquid and Suction Line Filter Drier for CO₂

System Protectors

The STAS is a replaceable core filter drier for CFC, HCFC, and HFC refrigerants for use in large commercial air conditioning and refrigeration systems. The STAS-CO is specifically designed for CO₂ (R-744) systems.

Features

- Slotted cover/unique internal hardware for hassle-free installation
- Full flow fittings for low pressure drop
- Corrosion resistant epoxy powder paint finish
- Sturdy steel shells for long life
- Solid copper connections
- 100 mesh outlet screen

Nomenclature example: STAS 489T

STAS	48	9	T
Steel Take-Apart Series	Unit Size (in cu. in.)	Connection Size (in 1/8")	System Service T = Liquid Line Service SV = Suction Line Service

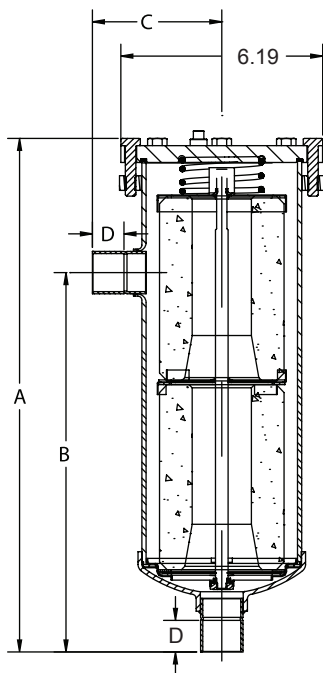


Specifications

- Filtration (with core): 40 microns
- Maximum working pressure: SV version = 500 psig
T version = 680 psig
- UL/CUL file number: SA7175

STAS Models are shipped without filter or filter drier cores.
See filter or filter drier cores for availability. Uses 48 cubic inch cores.

Dimensional Data



STAS Ordering Information

PCN	Description	Connection Size	Number Of 48 in ³ Cores	Desiccant Volume (Cu. In.)	Dimensions (in)			
					A	B	C	D
053001	STAS-485T	5/8 ODF	1	48	9.94	6.00	3.78	0.63
053003	STAS-487T	7/8 ODF			9.69	6.25	3.75	0.78
053005	STAS-489T	1 1/8 ODF			9.75	6.31	3.84	0.94
053007	STAS-4811T	1 3/8 ODF			9.84	6.44	3.97	0.94
053043	STAS-4813S-V ¹	1 5/8 ODF			9.88	6.02	4.03	1.13
053044	STAS-4817S-V ¹	2 1/8 ODF			10.06	6.56	4.56	1.34
053045	STAS-4821S-V ¹	2 5/8 ODF			10.44	7.03	4.75	1.04
053375	STAS-4813T	1 5/8 ODF			9.88	6.50	4.03	1.13
053938	STAS-4811SV	1 3/8 ODF			9.84	6.44	3.97	0.94
053010	STAS-967T	7/8 ODF	2	96	15.19	11.72	3.75	0.78
053012	STAS-969T	1 1/8 ODF			15.22	11.78	3.84	0.94
053014	STAS-9611T	1 3/8 ODF			15.31	11.91	3.97	1.03
053017	STAS-9613T	1 5/8 ODF			15.38	11.97	4.03	1.13
053018	STAS-9617T	2 1/8 ODF			15.56	12.03	4.56	1.34
053047	STAS-9617S-V ¹	2 1/8 ODF			15.56	12.03	4.56	1.34
053048	STAS-9621S-V ¹	2 5/8 ODF			15.94	12.50	4.75	1.50
059739	STAS-9625 SV ¹	3 1/8 ODF			16.54	12.63	5.44	1.66
053020	STAS-1449T	1 1/8 ODF	3	144	21.25	17.38	3.84	0.94
053022	STAS-14411T	1 3/8 ODF			21.34	17.53	3.97	1.03
053024	STAS-14413T	1 5/8 ODF			21.38	17.59	4.03	1.13
053025	STAS-14417T	2 1/8 ODF			21.56	17.63	4.56	1.34
053028	STAS-19211T	1 3/8 ODF			26.91	23.00	3.97	1.03
053030	STAS-19213T	1 5/8 ODF	4	192	26.94	23.17	4.03	1.13
053031	STAS-19217T	2 1/8 ODF			27.13	23.13	4.56	1.34
056213	STAS-19275T	7/8 X 5/8			26.50	6.00	3.69	0.78/0.63

¹"SV" style include stainless steel bolts and access valve.

NOTE: "T" style can be used for suction by removing pipe plug and installing X-11562-2.

STAS-CO Ordering Information

PCN	Description	Connection Size	Number of 48 in ³ Cores	Desiccant Volume (Cu. In.)	Dimensions (In)			
					A	B	C	D
066725	STAS-CO485T	5/8 ODF	1	48	9.37	6.06	3.78	0.50
066726	STAS-CO487T	7/8 ODF	1	48	9.50	6.25	3.74	0.75
066727	STAS-CO489T	1 1/8 ODF	1	48	9.60	6.30	3.85	0.91
066728	STAS-CO969T	1 1/8 ODF	2	96	15.20	11.90	3.85	0.91
066729	STAS-CO9611T	1 3/8 ODF	2	96	15.35	12.04	3.97	0.97

Note: STAS-CO has UL approval for use with CO₂ (R-744) at a maximum working pressure of 680 psig.

STAS Steel Liquid and Suction Line Filter Drier

STAS CO Steel Liquid and Suction Line Filter Drier for CO₂

System Protectors

Description	Connections	Liquid Flow Capacity Tons @ 1 psi ΔP ^{1,2,3}						
		R-134a R-450A R-513A	R-22 R-410A R-448A R-449A	R-407C	R-404A /507	R-502	R-410A	R-744 ⁴
STAS-485T	5/8 ODF	21	22	21	15	14	22	28
STAS-487T	7/8 ODF	38	41	39	27	25	41	53
STAS-489T	1 1/8 ODF	53	58	56	38	36	58	75
STAS-4811T	1 3/8 ODF	75	81	78	53	41	81	
STAS-4813T	1 5/8 ODF	81	89	85	58	58	89	
STAS-967T	7/8 ODF	42	45	43	30	27	45	
STAS-969T	1 1/8 ODF	65	71	68	47	42	71	92
STAS-9611T	1 3/8 ODF	80	87	83	57	54	87	112
STAS-9613T	1 5/8 ODF	92	100	95	65	58	100	
STAS-1449T	1 1/8 ODF	66	72	69	47	41	72	
STAS-14411T	1 3/8 ODF	92	100	96	65	60	100	
STAS-14413T	1 5/8 ODF	93	101	97	66	66	101	
STAS-14417T	2 1/8 ODF	110	120	115	78	76	120	
STAS-19211T	1 3/8 ODF	94	102	98	67	64	102	
STAS-19213T	1 5/8 ODF	103	113	108	74	69	113	
STAS-19217T	2 1/8 ODF	113	123	117	80	78	123	

¹ All ratings in accordance with ARI Standard 710-04. 86°F liquid refrigerant temperature

- 5°F saturated vapor temperature
- 3.1 lbs./min./ton for R-134a
- 2.9 lbs./min./ton for R-22 and R-407C
- 4.0 lbs./min./ton for R-404A/507 and R-12

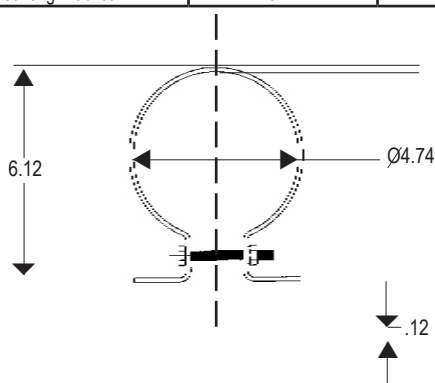
² For 2 PSI ΔP, Multiply values by 1.4

³ For kW, multiply by 3.5

⁴ R-744: Since there is currently no ARI standard for R-744, values are based on 1 ton of refrigeration at 20°F liquid refrigerant temperature and -20°F saturated vapor temperature.

Replacement Parts For STAS

Flange Cover Assembly	Description	PCN
All STAS Driers - Include Flange Cover, Compression Spring, Pipe Plug, and Grade 5 Bolts	X12176-3	054046
Shell Strainer Assembly		
STAS-48	X27458-1	060274
STAS-96	X27458-2	060275
STAS-144	X27458-3	060276
STAS-192	X27458-4	060277
Miscellaneous Parts		
Cover Bolts (Stainless steel - suction line service)	X25787-7	053121
Access Valve (V Option)	X11562-2	037409
Gasket Set (Includes cover gasket and felt set)	X11983-1	027453
Handle	26446-1	053812
Inlet Retainer	26477-1	053813
Spring	26439-1	060258
Mounting Bracket	X28747-1	061715



Mounting Bracket for STAS 48*

*More than one mounting bracket may be required for shell sizes 96 and above.

Exploded View

