

# Type **TK25 H<sub>2</sub>**

## **WEH<sup>®</sup> H<sub>2</sub> Fueling Nozzle**

for heavy-duty vehicles (buses and trucks) at self-service fueling stations



## General

### DESCRIPTION



#### Features

- Compatible with WEH® TN5 H<sub>2</sub> receptacle profile
- Safety features when not connected
- Extremely high flow rate ➔ short filling times
- Recirculation of the vented gas
- Plastic thermal protection
- WEH® Jaw locking mechanism
- High-grade materials
- Coding for pressure range / gas type

The WEH® TK25 H<sub>2</sub> Fueling Nozzle meets all requirements placed on a fueling nozzle for bus and truck refueling. Thus making hydrogen refueling as easy as gasoline refueling.

Simply place the TK25 H<sub>2</sub> fueling nozzle onto the receptacle and with a 180° turn of the actuation lever the filling procedure can start.

#### Safety

WEH® TK25 H<sub>2</sub> offers optimum safety to the operator.

The fueling nozzle remains connected to the receptacle until the gas between inlet valve and receptacle is depressurized.

#### Application

Fueling nozzle for H<sub>2</sub> fast filling of heavy-duty vehicles (buses and trucks) at self-service fueling stations.

NOZZLE - pressure range/coding		
RECEPTACLE - pressure range/coding		
	3,600 psi	5,000 psi
	3,600 psi	
	5,000 psi	

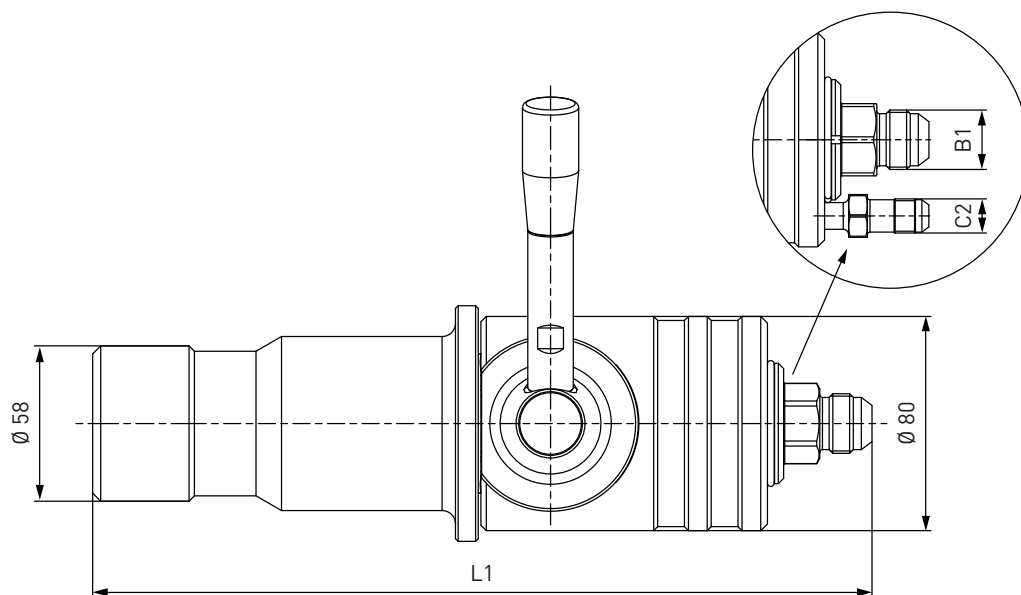
### TECHNICAL DATA

Characteristic	Basic version	Options
Nominal bore DN	12 mm	On request
Pressure range	PN = 250 bar (3,600 psi)   PS = 350 bar   PT = 500 bar PN = 350 bar (5,000 psi)   PS = 450 bar   PT = 645 bar	
Temperature range	-40 °F up to +185 °F	On request
Material	Corrosion resistant	On request
Sealing material	Hydrogen compatible	On request
Design	With plastic thermal protection and gas recirculation	On request
Weight	Approx. 10.14 lbs.	
Registration	SAE J2600:2002	

## Ordering / Accessories

### ORDERING | WEH® TK25 H<sub>2</sub> Fueling Nozzle

approx. dimensions (mm)



Part No.	Description	Pressure (PN)	Inlet B1 (male thread)	Gas recirculation C2 (male thread)	L1
<b>C1-62529-X01</b>	TK25 H <sub>2</sub>	250 bar / 3,600 psi	UNF 7/8"-14*	UNF 9/16"-18*	290
<b>C1-62527-X1-X01</b>	TK25 H <sub>2</sub>	350 bar / 5,000 psi	UNF 7/8"-14*	UNF 9/16"-18*	297

\* acc. to SAE J514, 37°

Complete nozzle-hose-assemblies consisting of fueling nozzle, hose set and breakaway coupling are available on request.

### ACCESSORIES

The following accessories are available for the WEH® TK25 H<sub>2</sub> Fueling Nozzle:

#### Filling and venting hoses

Filling and venting hose for connecting fueling nozzle and TSA5 H<sub>2</sub> breakaway coupling, complete with fittings and press-fittings supported by coil spring stubs.

Design: max. operating pressure PS: 450 bar (6,530 psi) / nominal bore DN: 6.35 mm



Part No.	Filling hose B1/B2 (female thread)	Venting hose C1/C2 (female thread)	Hose length
<b>C1-33046</b>	UNF 7/8"-14*	UNF 9/16"-18*	3 m
<b>C1-33047</b>	UNF 7/8"-14*	UNF 9/16"-18*	4 m
<b>C1-44255</b>	UNF 7/8"-14*	UNF 9/16"-18*	5 m

\* acc. to SAE JIC, 37°

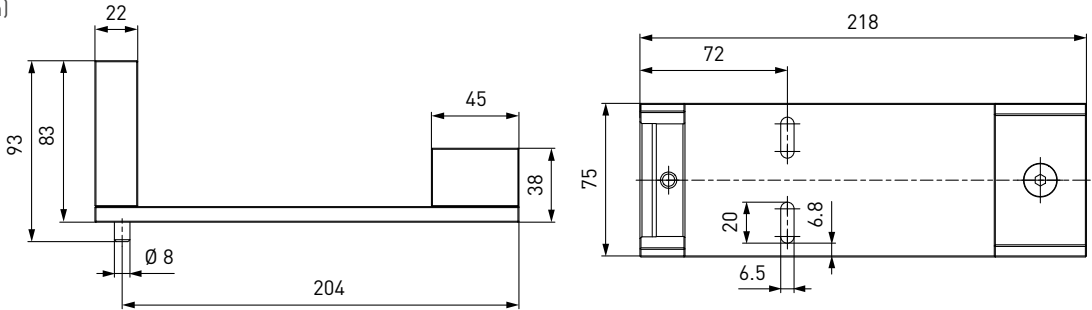
Accessories

Dispenser mounting

Mounting for safe attachment of the fueling nozzle to the dispenser. Design: Aluminium, stainless steel

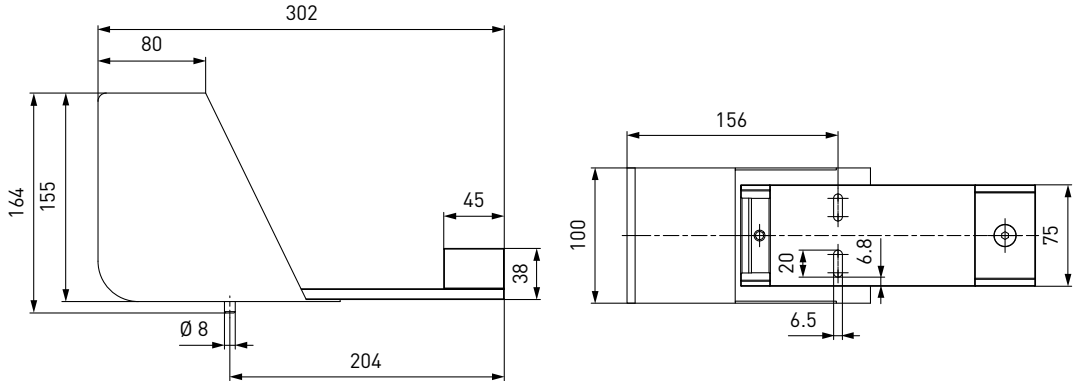
Switch actuated mounting (C1-83005)

approx. dimensions (mm)



Switch actuated mounting with weather protection (C1-82153)

approx. dimensions (mm)



Part No.	Description
C1-83005	Mounting (switch actuated)
C1-82153	Mounting (switch actuated) and weather protection

## Accessories

### Fittings

Stainless steel fittings for connecting port 'B1' to the filling hose resp. the port 'C2' to the venting hose are available on request.

### Spare parts

Various parts are available as spares for the TK25 H<sub>2</sub> fueling nozzle.



Part No.	Description
<b>W6631</b>	<b>1</b> Actuation lever
<b>E99-44923</b>	Maintenance spray