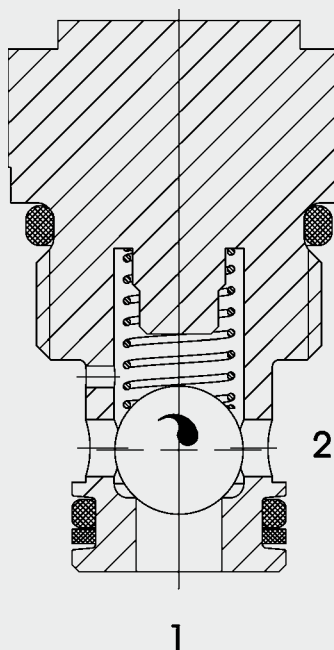




Up to 38 l/min
Up to 350 bar

FUNCTION



The check valve RVM06020 is a direct-acting, spring-loaded ball poppet valve. When there is no flow through the valve, the spring holds the ball in the closed position and therefore shuts off port 2 from port 1. The valve opens when the pressure at port 1 is higher than the pressure at port 2, including the pressure created by the spring force.

Check Valve Ball Seat Type Metric Cartridge – 350 bar RVM06020

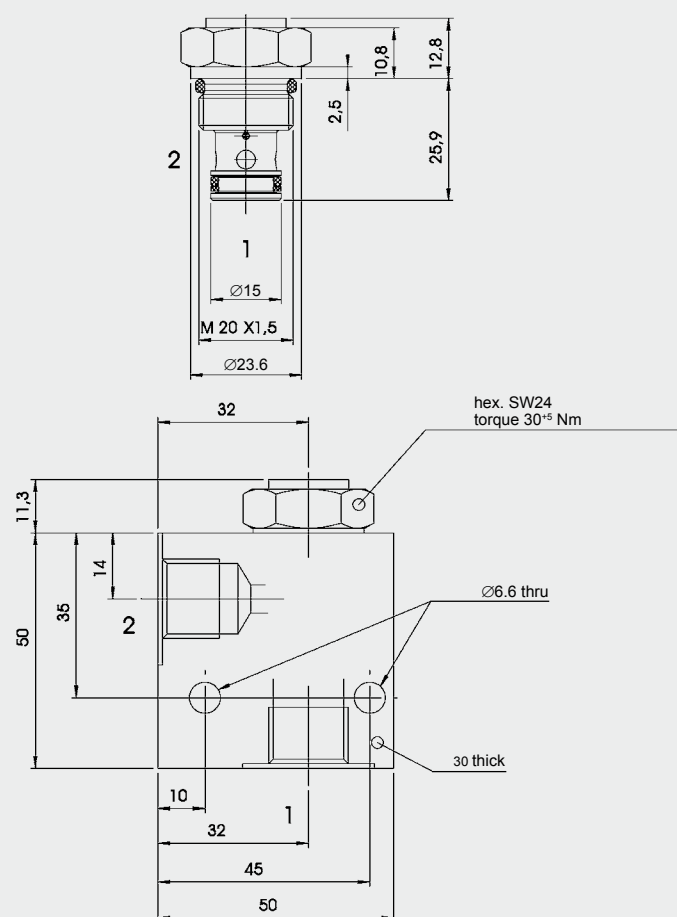
FEATURES

- Main application is to prevent uncontrolled movement or creeping of loaded cylinders and also to shut-off sections of the system
- External surfaces zinc-plated
- Low pressure drop by CFD optimized flow path
- Optional version with hardened and ground seat

SPECIFICATIONS

Operating pressure:	max. 350 bar
Nominal flow:	max. 38 l/min
Internal leakage:	Leak-free (max. 5 drops \approx 0,25 cm ³ /min at 350 bar)
Cracking pressure:	0.5 bar (others on request)
Ambient temperature range:	min. -30 °C to max. +100 °C
Media operating temperature range:	min. -30 °C to max. +100 °C
Operating fluid:	Hydraulic oil to DIN 51524 Part 1 and 2
Viscosity range:	min. 2.8 mm ² /s to max. 800 mm ² /s
Filtration:	Class 21/19/16 according to ISO 4406 or cleaner
MTTF _d :	150 years (see "Conditions and instructions for valves" in brochure 5.300)
Installation:	No orientation restrictions
Materials:	Valve body: high tensile steel Closing element: hardened and ground steel Seals: NBR (standard) FKM (optional, media temperature range -20 °C to +120 °C) Back-up rings: PTFE
Cavity:	06020
Weight:	0.08 kg

DIMENSIONS



MODEL CODE

RVM 06020 - 01 - C - N - 0.5

Basic model _____
Check valve, metric

Cavity _____
06020 = 2-way cavity

Type _____
01 = standard model
(surface zinc-plated)
06 = hardened seat version

Body and ports _____
C = cartridge

Seals _____
N = NBR
V = FKM

Cracking pressure _____
0.5 = 0.5 bar
Others on request

Standard models

Model code	Part No.
RVM06020-01-C-N-0.5	3196992
Other models on request	

Standard in-line bodies

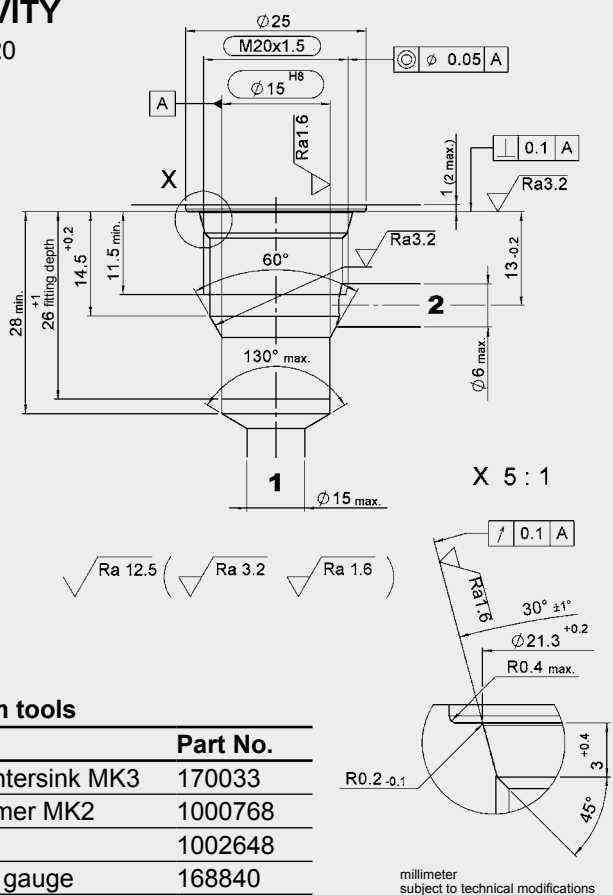
Code	Part No.	Material	Ports
R06020-01X-01	275266	Steel, zinc-plated	G 3/8

Seal kits

Code	Material	Part No.
SEAL KIT 06020-NBR	NBR	3119017
SEAL KIT 06020-FKM	FKM	3262477

CAVITY

06020



Form tools

Tool	Part No.
Countersink MK3	170033
Reamer MK2	1000768
Tap	1002648
Plug gauge	168840

PERFORMANCE

Measured at:
 $v = 34 \text{ mm}^2/\text{s}$, $T_{\text{oil}} = 46^\circ \text{C}$

