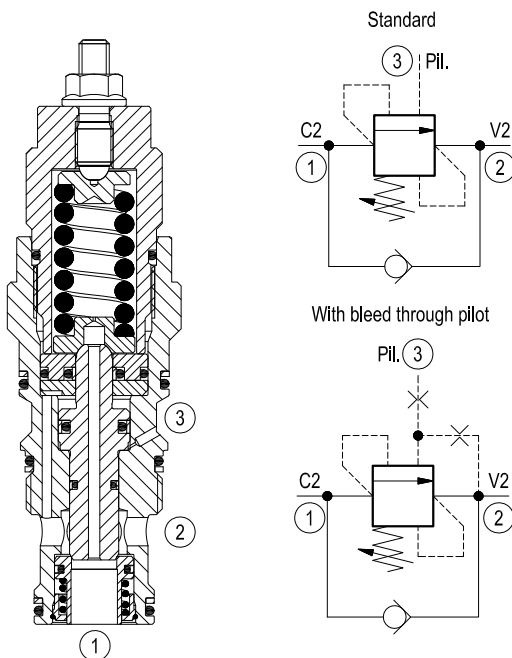


Counterbalance, standard poppet type, differential area, counterclockwise adjustment SUN cavity interchange, T-17A

VBSN-16U-RS

04.52.45 - X - 47 - Z



Description

When pressure at 2 rises above the spring bias pressure, the check seat is pushed away from the piston and flow is allowed from 2 to 1. When load pressure at 1 rises above the pressure setting (turn counterclockwise to increase setting - turn clockwise to decrease setting), the direct-acting, differential area relief function is activated and flow is relieved from 1 to 2. With pilot pressure at 3, the pressure setting is reduced in proportion to the stated ratio of the valve, until fully open with free-flow from 1 to 2. Any back-pressure at 2 is additive to the pressure setting in all functions.

Technical data

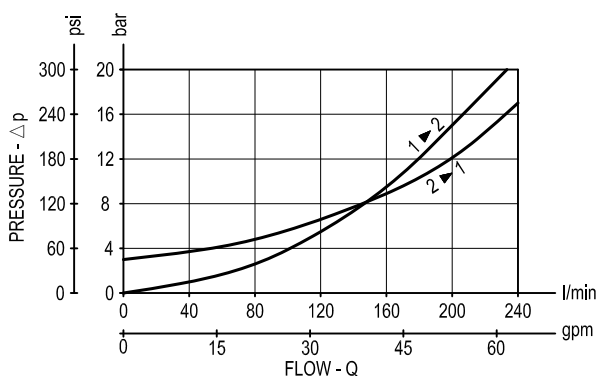
| | | |
|---------------------------|----------------------|--|
| Max. operating pressure | bar (psi) | 420 (6000) |
| Max. flow | l/min. (gpm) | 240 (63) |
| Max. internal leakage (*) | drops/min. | 15 |
| Fluid temperature range | °C (°F) | -30 to 100 (-22 to 212) |
| Installation torque | Nm (ft-lbs) | 200-215 (148-159) |
| Weight | kg (lbs) | 0.8 (1.76) |
| Cavity | | SUN T-17A |
| Seal kit (**) | code material no. | RG16U9020110100 R930000995 |
| Fluids | | Mineral-based or synthetics with lubricating properties at viscosities of 10 to 500 mm ² /s (cSt) |
| Filtration | | Nominal value max. 10µm (NAS 8) ISO 4406 19/17/14 |
| Installation | | No restrictions |
| Other Technical Data | | See data sheet RE 18350-50 |

Pressure setting: at least 1.3 times the load induced pressure.

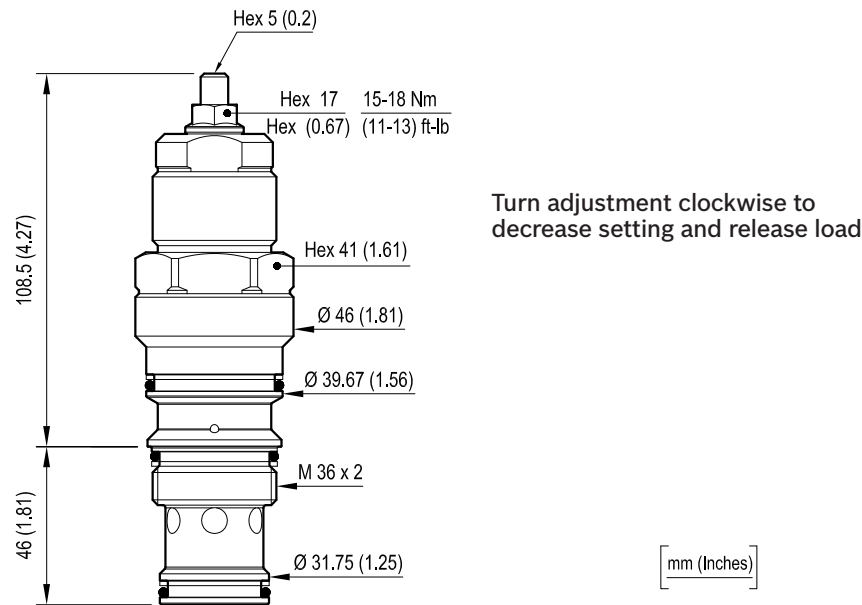
(*) At 70% of pressure setting

(**) Only external seals for 10 valves

Performance



Dimensions



Ordering code

| | | | | | |
|----------|---|----|---|----|---|
| 04.52.45 | X | 47 | Z | 00 | * |
|----------|---|----|---|----|---|

Counterbalance, standard poppet type, differential area, counterclockwise adjustment

| |
|-----------------------------------|
| Pilot ratio |
| = 03 4:1 standard version |
| = 10 8:1 standard version |
| = 42 2:1 with bleed through pilot |

SUN cavity interchange, SUN T-17A

Series 0/A to L
unchanged performances and dimensions

Version and options standard

| | | SPRINGS | | |
|-------------|------|-------------------------------|--|-----------------------------------|
| | | Standard setting bar (psi) | Pres. increase bar/turn (psi/turn) | Cracking pressure bar (psi) |
| for X=03 | = 20 | 70-280 (1000-4000) | 80 (1160) | 200 (2900) |
| | = 40 | 200-420 (2900-6000) | 118 (1711) | 350 (5000) |
| for X=10 | = 20 | 70-280 (1000-4000) | 49 (711) | 200 (2900) |
| | = 40 | 200-420 (2900-6000) | 77 (1117) | 350 (5000) |
| for X=42 | = 20 | 70-280 (1000-4000) | 80 (1160) | 200 (2900) |
| | = 40 | 200-420 (2900-6000) | 118 (1711) | 350 (5000) |

Note: Special settings available. Contact factory authorized representative for ordering code

| Type | Material number |
|-----------------|-----------------|
| 045245034720000 | R930000051 |
| 045245034740000 | R930000052 |
| 045245104720000 | R930000053 |
| 045245104740000 | R930000054 |
| 045245424720000 | R930000055 |

| Type | Material number |
|-----------------|-----------------|
| 045245424740000 | R930000056 |
| | |
| | |
| | |
| | |