

Needle restrictor, free reverse flow Common cavity, Size 08

STVU-08A

04.01.03 - X - 56.00

RE 18321-10

Edition: 03.2016

Replaces: 11.2009



Description

With flow from 2 to 1, the valve provides a fully adjustable orifice restriction. Free flow is permitted from 1 to 2, regardless of valve adjustment, by when pressure overcomes the spring bias of the valve's check function.

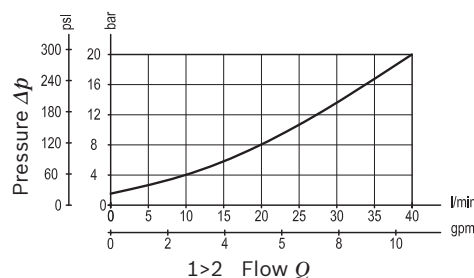
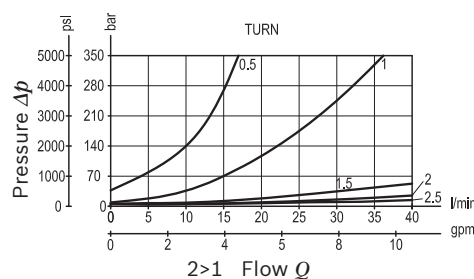
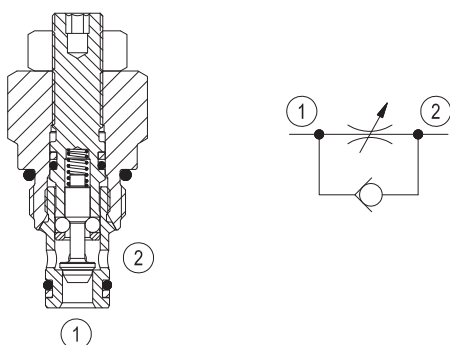
Technical data

Max. operating pressure	350 bar (5000 psi)
Max. flow	40 l/min. (11 gpm)
Max. internal leakage ¹⁾	15 drops/min. closed
Fluid temperature range	-30 to 100 °C (-22 to 212 °F)
Installation torque	34 - 41 Nm (25 - 30 ft-lbs)
Weight	0.16 kg (0.35 lbs)
Cavity	CA-08A-2N (see data sheet 18325-70)
Lines bodies and standard assemblies	Please refer to section "Hydraulic integrated circuit" or consult factory
Seal kit ²⁾	Code: RG08A2010520100 material no: R901101437
Fluids	Mineral-based or synthetics with lubricating properties at viscosities of 5 to 800 mm ² /s (cSt)
Recommended degree of fluid contamination	Nominal value max. 10µm (NAS 8) / ISO 4406 19/17/14
Installation	No restrictions
Other Technical Data	See data sheet 18350-50

1) Measured at 200 bar (2900 psi)

2) Only external seals for 10 valves

Characteristic curve



Ordering code

04.01.03	X	56	00	00	*
----------	---	----	----	----	---

Needle restrictor, free reverse flow

Adjustments

03 Leakproof hex. socket screw

04 Handknob and locknut

56 Common cavity, Size 08

Series 0/A to L
unchanged performances and dimensions

Version and options standard

Preferred types

Type	Material number
040103035600000	R930000002
040103045600000	R930000003

Type	Material number

Dimensions

