

# Solenoid operated valves pilot operated poppet type

## 2-way normally closed

## Common cavity, Size 16

VEI-16-16A-NC

OD.15 - X - 75 - Y - Z

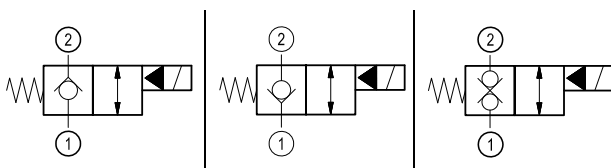
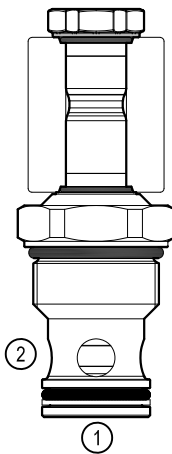
**RE 18323-41**

Edition: 03.2020

Replaces: 06.2019



**PATENT PENDING**



### Technical data

New VEI-16 family incorporates a new solenoid concept providing excellent performance and enables cartridges to work in severe environment. Cartridges also incorporates advanced design of hydraulic parts providing excellent hydraulic performance.

### Technical data

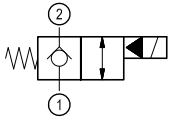
General		
Weight		0.25 kg (0.55 lbs)
Installation orientation		Unrestricted
Storage ambient temperature range		-40 to 100 °C (-40 to 212 °F)
Operating ambient temperature range		-30 to 90 °C (-22 to 194 °F)
Salt spray test to DIN EN ISO 9227:2017-07		500h
Hydraulic		
Max. operating pressure		350 bar (5000 psi)
Flow range		5 - 150 l/min (1 - 40 gpm)
Fatigue cycle life		1 million cycles at 350 bar
Max. internal leakage:		20 drops/min.
Fluid temperature range		-20 to 80 °C (-4 to 176 °F)
Fluids: Mineral-based or synthetics with lubricating properties at viscosities of 20 to 380 mm <sup>2</sup> /s (cSt)		
Installation torque		130 - 150 Nm (96 - 111 ft-lbs)
Recommended degree of fluid contamination		Nominal value max. 10 µm (NAS 8) ISO 4406 19/17/14
MTTFD		150 years see RE 18350-51
Common cavity		CA-16A-2N see 18325-70
Seal kit for X=03,05	code	RG12A2010520100
	material no.	R901111377
Seal kit for X=31	code	RG12A2010530100
	material no.	R930003374
Seal kit coil and standard cap	code	RG01Z0010000100
	material no.	R930058940
Seal kit coil and protective cap only for Y=D	code	RG03Z0010000100
	material no.	R930067870
Other technical data		See data sheet 18350-50
Electrical		
Type of voltage		DC voltage
Coil type		D36
Supply voltage		See data sheet 18325-90
Voltage tolerance against ambient temperature		See characteristic curve
Power consumption		20 W
Type of protection		See data sheet 18325-90
Note: Coils must be ordered separately		

Ordering code

<b>OD.15</b>	<b>X</b>	<b>75</b>	<b>Y</b>	<b>Z</b>	<b>0000</b>	<b>*</b>
--------------	----------	-----------	----------	----------	-------------	----------

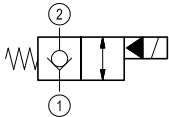
Solenoid operated valves  
pilot operated poppet type  
2-way normally closed

bidirectional type



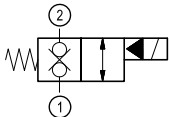
**03**

bidirectional type



**05**

bidirectional type



**31**

Series 0/A to L  
unchanged performances and dimensions

0 = With buna seal  
8 = With buna seal and extra spring

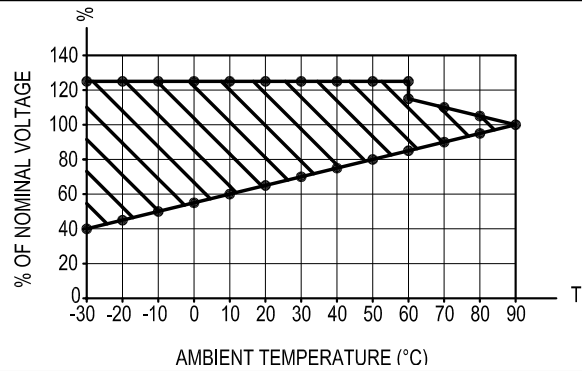
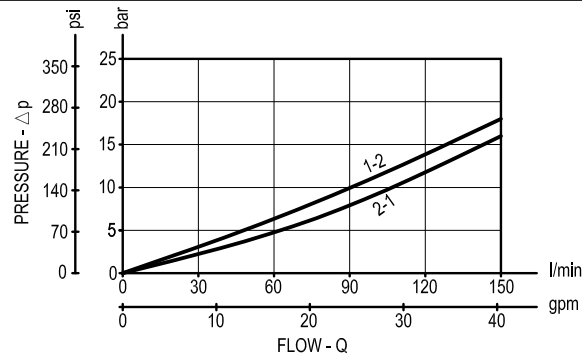
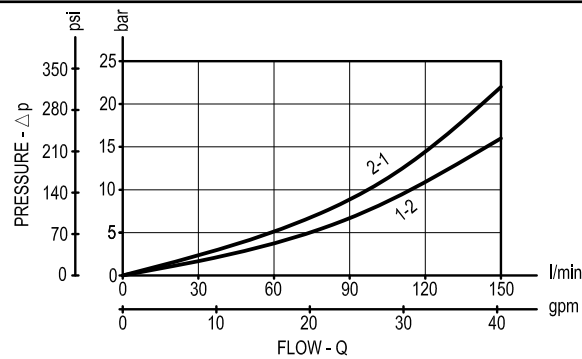
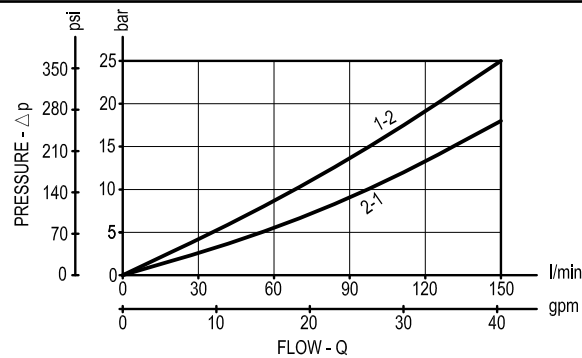
A = Standard  
D = Knob style manual override

Common cavity: CA-16A-2N

Preferred types

Type	Material number
OD150375A000000	R930070263
OD150575A000000	R930069969
OD150575D000000	R930070067
OD153175A000000	R930069968
OD153175D000000	R930070358

Type	Material number

**Characteristic curves****All Versions - Admissible supply voltage Vs. Ambient temperature at 100% duty cycle****Versions 03****Versions 05****Versions 31**

**Dimensions**  
**Solenoid operated valves, poppet 2-way**  
**normally closed**

