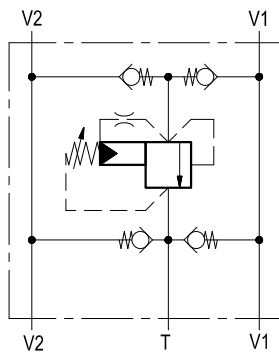
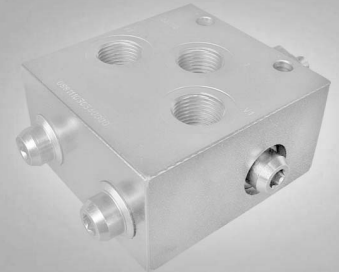


Dual cross over relief, pilot operated, with anti-cavitation check valves

A-VAA-CC-150

08.81.11 - X - Y - Z



Description

It relieves the inlet pressure from either one of the supply lines and it protects motors or hydraulic actuators from shocks or pressure surges induced by changes in direction or by sudden stops. The relief is of the cross over type, and exhausted oil is transferred through the check valve to the low pressure line (from V1 into V2, or vice-versa) to prevent cavitation. An extra tank port (T), with 2 additional checks, allows to make up for any drain or exhausted flow and ensures that the motor is always full.

Technical data

Hydraulic

Max. operating pressure	bar (psi)	350 (5000)
Max. flow	l/min (gpm)	150 (40)
Leakage at max.relief setting	l/min (gpm)	0.10 (0.03)

The pilot operated relief cartridge provides very "flat" curves up to the max flow.

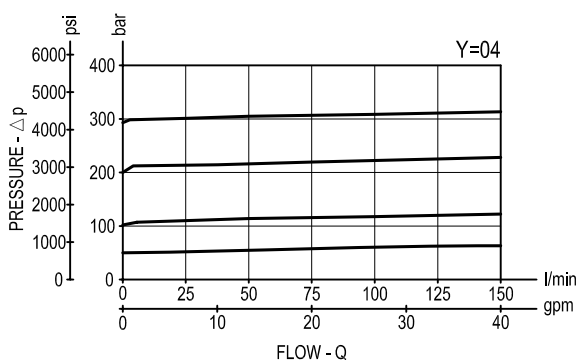
For best protection, the valve should be fitted as close to the actuator as possible.

General

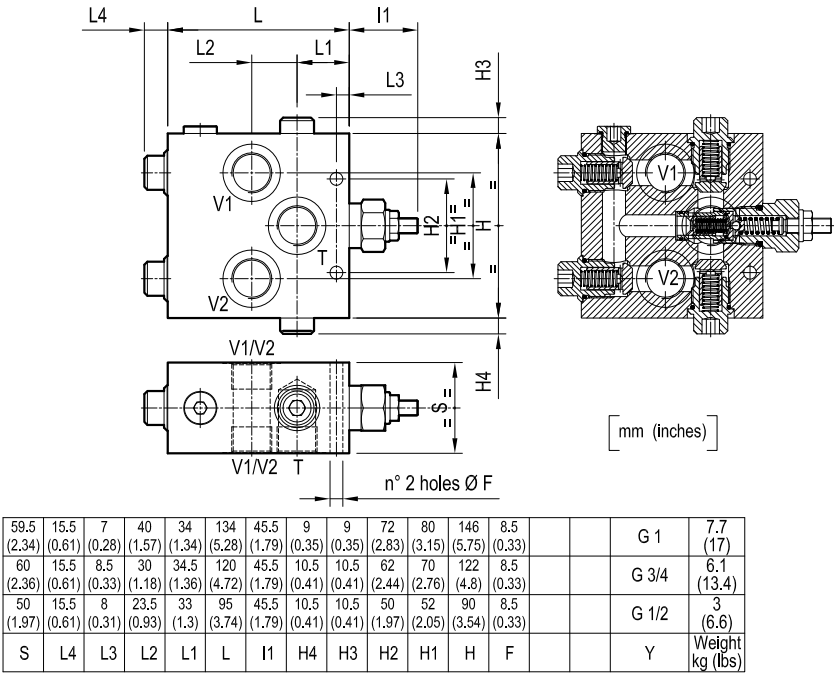
Manifold material	Steel
Weight	see "Dimensions"
Fluid temperature range	°C (°F) between -30 (-22) and +100 (212)
Other technical data	see data sheet RE 18350-50

Note: for applications outside these parameters, please consult us.

Performance



Dimensions



Ordering code

08.81.11

X

Y


Z

Dual cross over relief,
with anti-cavitation check valves

Adjustments


= 03

Leakproof hex. socket screw



Port sizes	P	T
= 03	G 1/2	G 1/2
= 04	G 3/4	G 3/4
= 05	G 1	G 1

Tamper resistant cap
code 11.04.23.004
R930000754



SPRINGS			
	Adj. pressure range bar (psi)	Pres. increase bar/turn (psi/turn)	Std. setting Q=5 (l/min.) bar (psi)
= 40	35-420 (500-6000)	115 (1668)	350 (5000)

Type	Material number	Type	Material number
088111030340000	R930004103		
088111030440000	R930004104		
08811103054000A	R930054488		