

# Super SeaCam<sup>®</sup> 5000

Piloting Camera with Excellent Low-Light Capability.



## FEATURES

**Low-Light Black & White and Color**

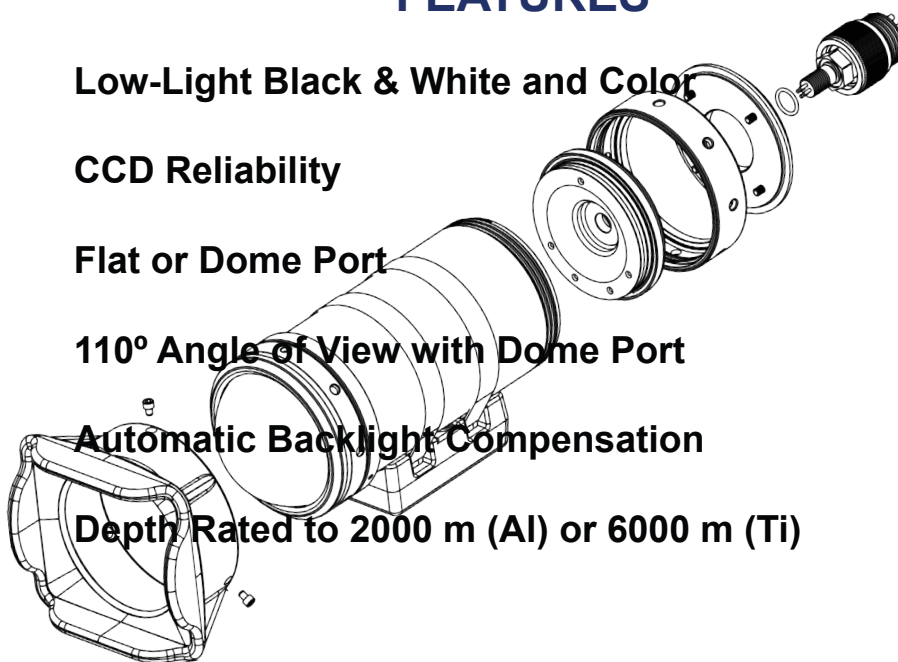
**CCD Reliability**

**Flat or Dome Port**

**110° Angle of View with Dome Port**

**Automatic Backlight Compensation**

**Depth Rated to 2000 m (Al) or 6000 m (Ti)**



# Super Seacam® 5000

## Standard Connector

### BH4MP

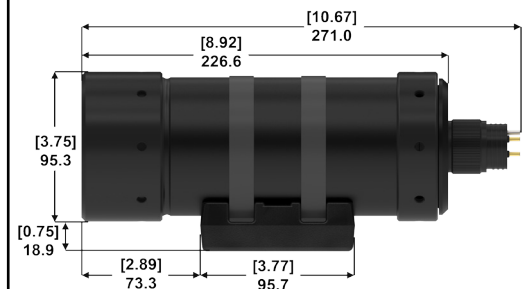


- 1 = Ground
- 2 = Power
- 3 = Video
- 4 = Not Used

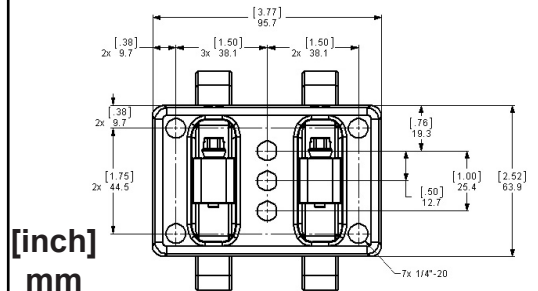
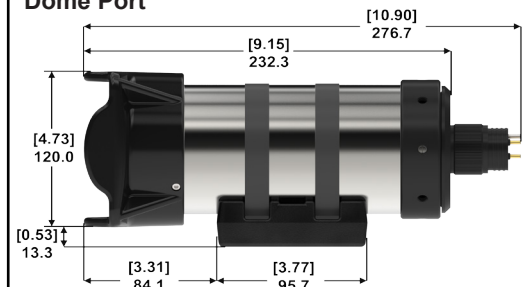
\*Other connectors and pin-out options are available upon request.

## Dimensions

### Flat Port



### Dome Port



Mechanical Specifications		
Housing	6061 Aluminum 6AL-4V Titanium	
Port	Optically polished glass	
Outer Diameter	Flat Port: 95.3 mm (3.75 in) Dome Port: 120.0 mm (4.73 in)	
Overall Length w/ out connector	Flat Port: 226.6 mm (8.92 in) Dome Port: 232.3 mm (9.15 in)	
Weight in Air	Ti: 2.95 kg (6.5 lbs.) Al: 1.86 kg (4.11lbs)	
Weight in Water	Ti: 1.54 kg (3.41 lbs.) Al: 0.43 kg (15 ounces)	
Environmental Specifications		
Depth Rating	Ti: 6000 m (20,000 ft) Al: 2000 m (6500 ft)	
Operating Temp.	0° C to 50° C (32° F to 122° F)	
Storage Temp.	-20° C to 60° C (-4° F to 140° F)	
Optical Specifications		
Lens	3.5mm, f 1.6	
Focus	Fixed Focus	
Depth of Field	60 cm (23.6 in.) to infinity	
FOV in Air	83° (H) x 60° (V) x 95° (D)	
	<b>B/W</b>	<b>Color</b>
FOV in Water	Dome Port : 110° (H) x 89° (V) x 120° (D) Flat Port: 80° (H) x 69° (V) x 90° (D)	Dome Port : 90° (H) x 70° (V) x 104° (D) Flat Port: 63° (H) x 49° (V) x 74° (D)
Video Specifications		
Image Sensor	1/2 inch CCD Sensor	1/3 inch CCD sensor
Number of Pixels	EIA: 768 (H) x 494 (V) CCIR: 752 (H) x 582 (V)	NTSC: 768 (H) x 494 (V) PAL: 752 (H) x 582 (V)
Resolution	570 lines horizontal	540 lines
Scene Illumination	0.001 Lux	0.1 Lux
Signal to Noise	More than 50 dB	
Video Output	Composite, 1.0 volt (peak to peak) 75 ohm, unbalanced	
Video Format	EIA or CCIR	NTSC or PAL
Electrical Specifications		
Power	9-30 V DC	
Current	160 mA	145 mA

