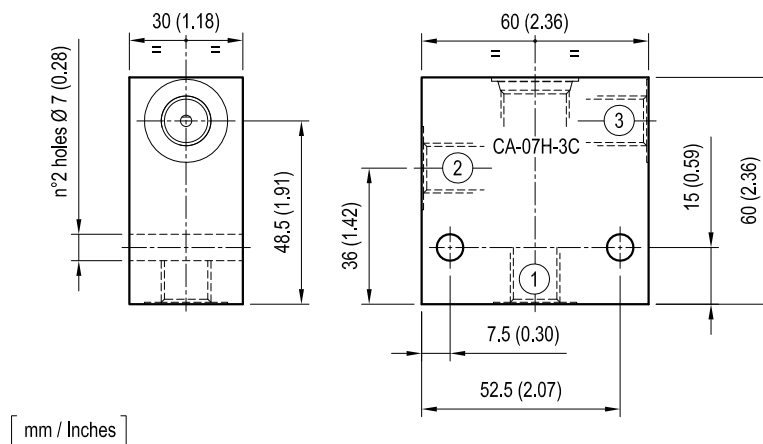


## Standard manifolds - Common cavity

### Size 07 - Aluminium / Steel

CAVITY: CA-07H-3C

|           | Ordering code           | Ports |       | Weight<br>kg (lbs) |
|-----------|-------------------------|-------|-------|--------------------|
|           |                         | 1-2   | 3     |                    |
| Aluminium | OC1009311<br>R930057783 | G 1/4 | G 1/4 | 0.26<br>(0.57)     |
|           | OC1009312<br>R930057785 | G 3/8 | G 1/4 | 0.25<br>(0.55)     |
| Steel     | OC1009314<br>R930057787 | G 1/4 | G 1/4 | 0.72<br>(1.59)     |
|           | OC1009313<br>R930057786 | G 3/8 | G 1/4 | 0.70<br>(1.54)     |

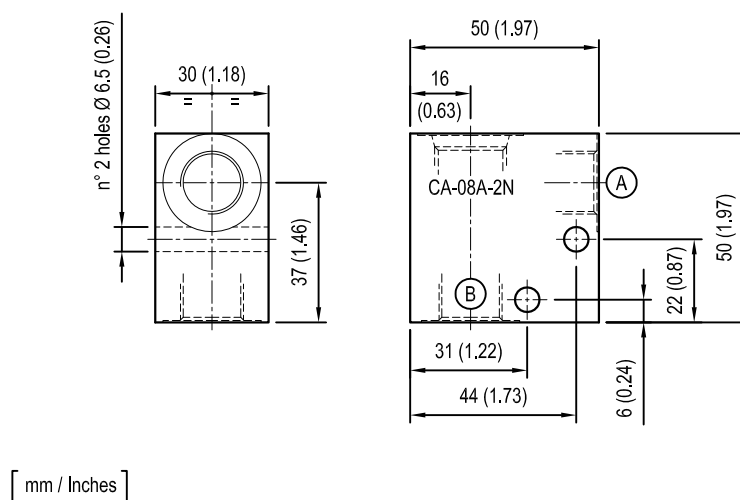


## Standard manifolds - Common cavity

### Size 08 - Aluminium / Steel

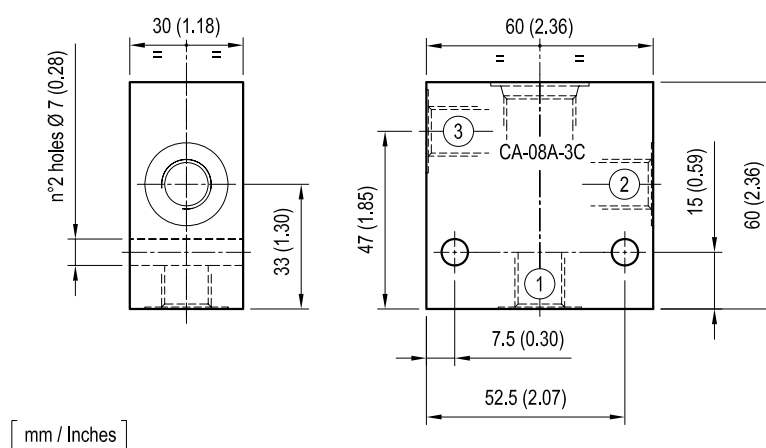
CAVITY: CA-08A-2N

|           | Ordering code           | Ports<br>A-B | Weight<br>kg (lbs) |
|-----------|-------------------------|--------------|--------------------|
|           |                         |              |                    |
| Aluminium | OC1009009<br>R901090786 | G 1/4        | 0.17 (0.38)        |
|           | OC1009004<br>R901082022 | G 3/8        | 0.16 (0.35)        |
| Steel     | OC1009067<br>R901090800 | G 1/4        | 0.47 (1.04)        |
|           | OC1009066<br>R901090799 | G 3/8        | 0.45 (0.99)        |



CAVITY: CA-08A-3C

|           | Ordering code           | Ports |       | Weight<br>kg (lbs) |
|-----------|-------------------------|-------|-------|--------------------|
|           |                         | 1-2   | 3     |                    |
| Aluminium | OC1009262<br>R934000223 | G 1/4 | G 1/4 | 0.25<br>(0.55)     |
|           | OC1009260<br>R934000221 | G 3/8 | G 1/4 | 0.25<br>(0.55)     |
| Steel     | OC1009263<br>R934000224 | G 1/4 | G 1/4 | 0.71<br>(1.57)     |
|           | OC1009261<br>R934000222 | G 3/8 | G 1/4 | 0.69<br>(1.52)     |

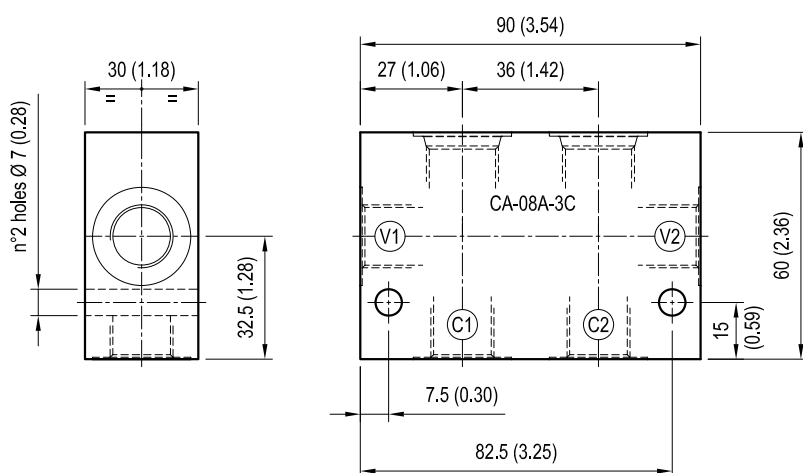


## Standard manifolds - Common cavity

### Size 08 - Aluminium / Steel

CAVITY: CA-08A-3C  
(DOUBLE CAVITY)

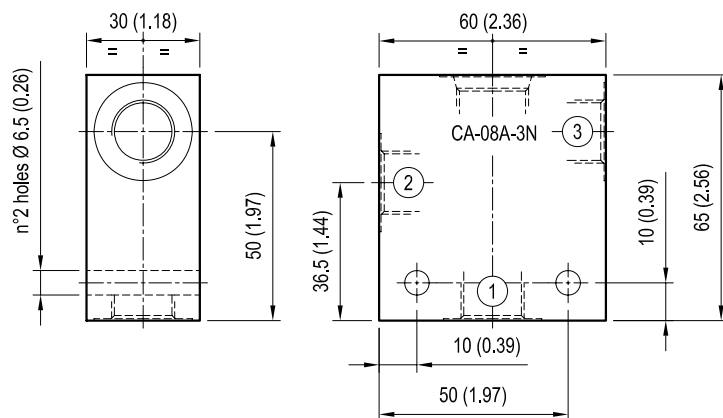
|           | Ordering code           | Ports<br>V1-V2-C1-C2 | Weight<br>kg (lbs) |
|-----------|-------------------------|----------------------|--------------------|
| Aluminium | OC1009185<br>R934000146 | G 3/8                | 0.36<br>(0.79)     |
|           |                         |                      |                    |
| Steel     | OC1009184<br>R934000145 | G 3/8                | 1.00<br>(2.21)     |
|           |                         |                      |                    |



[ mm / Inches ]

CAVITY: CA-08A-3N

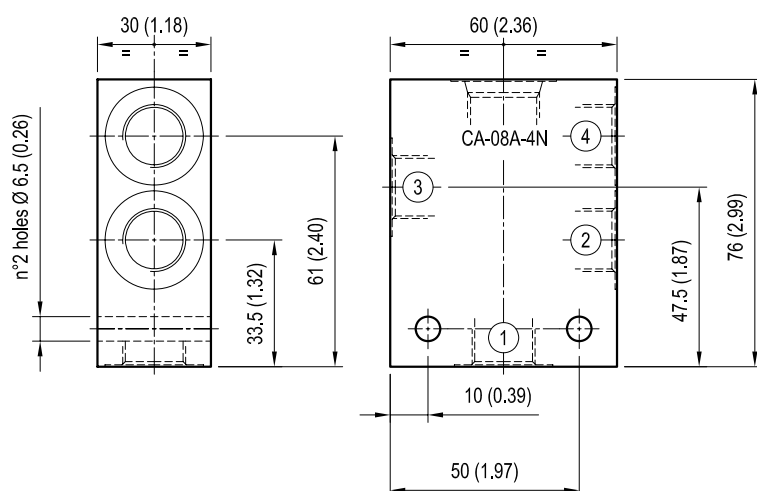
|           | Ordering code           | Ports<br>1-2-3 | Weight<br>kg (lbs) |
|-----------|-------------------------|----------------|--------------------|
| Aluminium | OC1009042<br>R901100471 | G 1/4          | 0.30 (0.66)        |
|           | OC1009048<br>R901100497 | G 3/8          | 0.27 (0.60)        |
| Steel     | OC1009225<br>R934000186 | G 1/4          | 0.78 (1.72)        |
|           | OC1009153<br>R934000140 | G 3/8          | 0.74 (1.63)        |



[ mm / Inches ]

CAVITY: CA-08A-4N

|           | Ordering code           | Ports<br>1-2-3-4 | Weight<br>kg (lbs) |
|-----------|-------------------------|------------------|--------------------|
| Aluminium | OC1009047<br>R901100531 | G 1/4            | 0.33 (0.73)        |
|           | OC1009046<br>R901100524 | G 3/8            | 0.29 (0.64)        |
| Steel     | OC1009236<br>R934000197 | G 1/4            | 0.93 (2.05)        |
|           | OC1009237<br>R934000198 | G 3/8            | 0.81 (1.79)        |



[ mm / Inches ]