

DISCRETE SIGNAL & POWER CONTACTS

- Models for dry circuit to 500 amps
- .016" (.4mm) to .650" (16.5mm) diameter pins with mating sockets
- Long life contacts
- Contact resistance from .04 to 8 milliohms
- Ideal for test, burn-in, and highpower use



INDIVIDUAL CONTACTS

Individual pins and sockets are available for those applications where special constraints prohibit the use of multi-pin connectors.

Contact Dia. Inches (mm)	.016 (.40)	.018 (.45)	.024 (.60)	.030 (.76)	.040 (1.02)	.059 (1.50)	.098 (2.50)	.138 (3.50)	.169 (4.30)	.241 (6.12)	.500 (12.70)	.650 (16.50)
Page	Y2	Y3	Y4	Y5	Y6	Y7	Y8	Y9	Y10	Y11	Y12	Y12
Contact Styles M=Male F=Female												
Crimp	M, F	M, F	M, F		M, F	M	M, F		M	M, F		
Solder Cup	M, F	M	M, F		M, F	M, F	M, F	M, F	M			
Straight Dip	M, F	M, F	M, F	M, F	M	M, F						
Open Both Ends	F	F			F	F		F				
Closed End		F		F	F	F	F					
Threaded Stud						F		M, F	M, F	M, F	M, F	M, F
Press In							F	F	F	F		
Right Angle Block								M, F				
Contact Resis. (milliohms)	<8	<8	<5	<5	<2.5	<2.5	<.8	<.5	<.37	<.25	<.08	<.04
Current Rating	1	2.5	4	5	8	10	15	25, 40 & 50	100	200	350	500
Extrac. Force	.3-1.6oz.	.5-1.6oz.	.3-2.0oz.	.5-3.2oz.	1.0-3.9oz.	1.2-5oz.	6.0-25oz.	7-32oz.	15-90oz.	80-160oz.	9-20 lb.	20-37 lb.
Contact Life	> 100,000 Cycles											
Materials	Beryllium copper wires and brass body											
Plating Reference	<p>G = 10μ in. Gold on mating surfaces</p> <p>H = 50μ in. Gold</p> <p>AH = 50μ in. Gold on mating surface and gold flash on socket body only</p> <p>GT = 10μ in. Gold on mating surface and tin lead on socket body only</p> <p>HT = 50μ in. Gold on mating surface and tin lead on socket body only</p> <p>ABH = 50μ in. Gold on mating surface and tin lead on tail. All other surfaces gold flash.</p> <p>ALT = 30μ in. Gold on mating surface and tin on tail. All other surfaces gold flash.</p> <p>L = 250μ in. Gold</p> <p>* Suffix at end of part number determines plating.</p> <p>Example: The G in YPN005-001G equals 10μ in. Gold.</p>											

Y SERIES

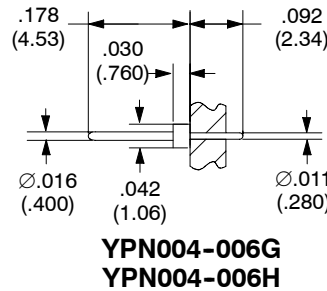
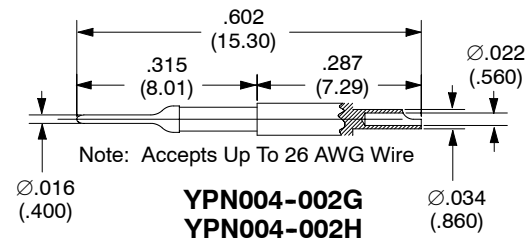
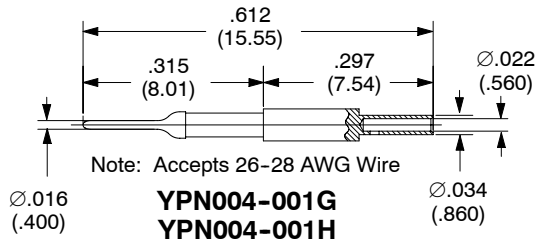
Ø .016" (.40mm) CONTACTS

Materials: Beryllium copper wires and brass body
 Plating: Gold over nickel
 Resistance: < 8 milliohms
 Current Rating: 1.0 amps
 Extraction Force: Min. .3 oz., Max 1.6 oz.
 Life: > 100,000 cycles

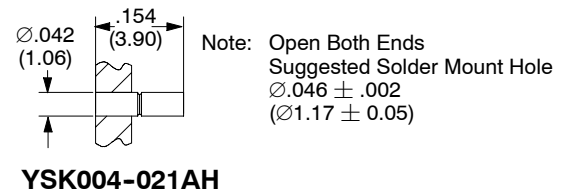
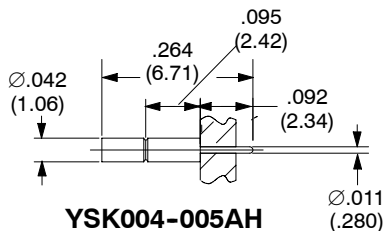
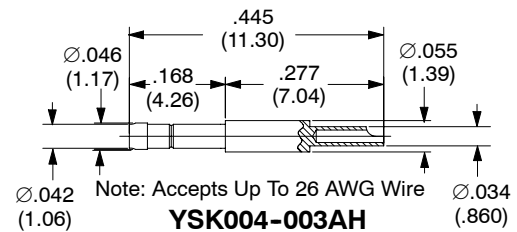
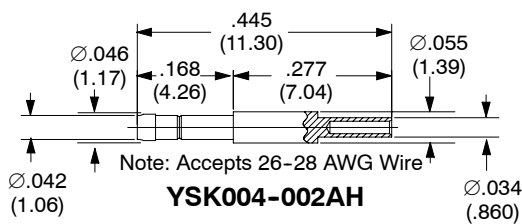
Plating Reference

Male Pins: G = 10 µin gold (min) over Ni
 H = 50 µin gold (min) over Ni
 Female Sockets: AH = 50 µin gold (min) over Ni on mating surface, gold flash over Ni on termination

MALE CONTACTS (PINS)



FEMALE CONTACTS (SOCKETS)



ORDERING INFORMATION

YSK 004 - 002 AH

Notes

- Dimensions in inches (mm).

Plating (see above):
 G, H, AH

Model Number

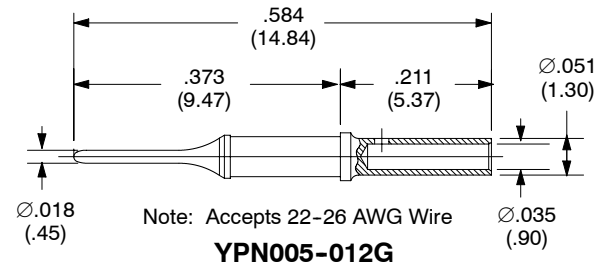
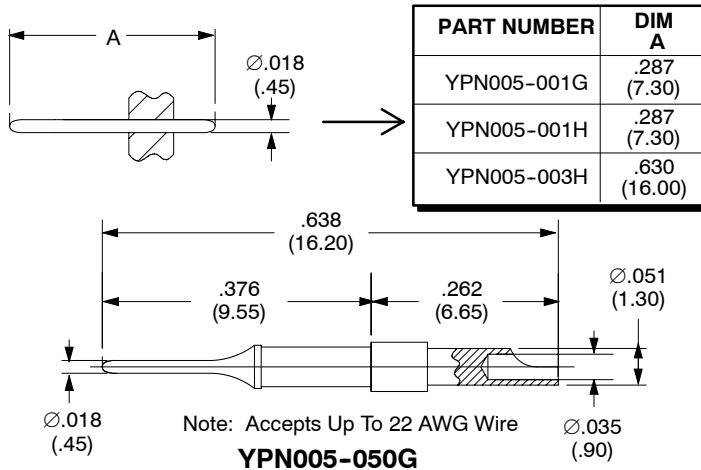
Ø .018" (.45mm) CONTACTS

Materials: Beryllium copper wires and brass body
 Plating: Gold over nickel
 Resistance: < 8 milliohms
 Current Rating: 2.5 amps
 Extraction Force: Min. .5 oz., Max 1.6 oz.
 Life: > 100,000 cycles

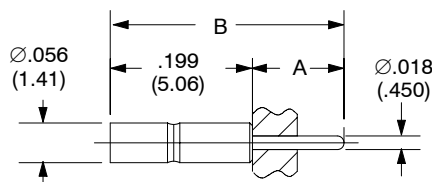
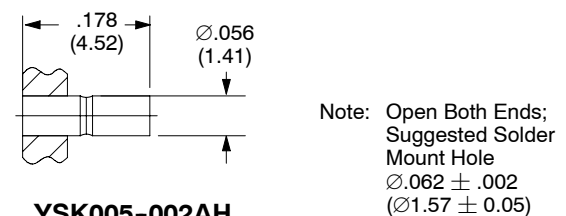
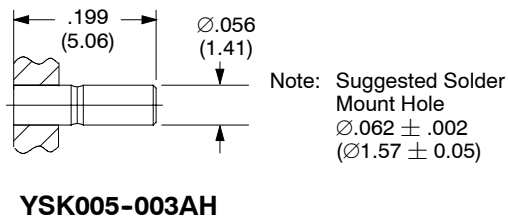
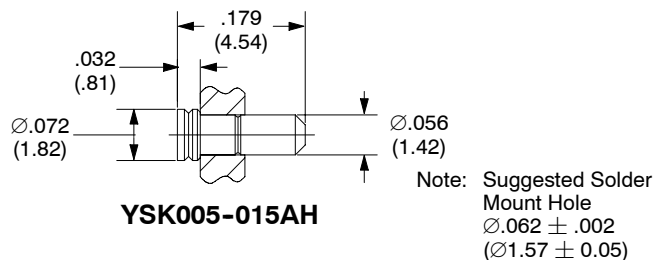
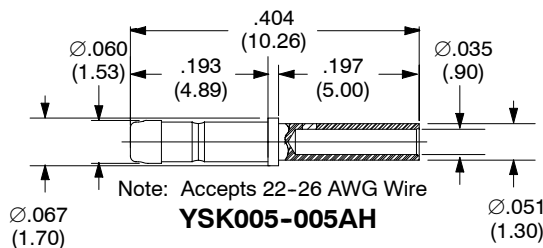
Plating reference:

Male Pins: G = 10 μ in. gold (min) over Ni
 H = 50 μ in. gold (min) over Ni
 Female Pins: AH = 50 μ in. gold (min) over Ni on mating surface and gold flash over Ni on termination
 HT = 50 μ in. gold (min) over Ni on mating surface and tin lead on termination
 ABH = 50 μ in. gold (min) over Ni on mating surface and tin lead on tail. All other surfaces gold flash.
 AIT = 30 μ in. gold (min) over Ni on mating surface and tin on tail. All other surfaces gold flash.

MALE CONTACTS (PINS)



FEMALE CONTACTS (SOCKETS)



PART NUMBER	DIM A	DIM B
YSK005-004AH	.128 (3.25)	.327 (8.31)
YSK005-008AH	.307 (7.80)	.506 (12.86)

ORDERING INFORMATION

YSK 005 - 001 AH

Plating (see above):
 G, H, AH, ABH, AIT
 HT available on -015

Model Number

Notes

- Dimensions in inches (mm).

Y SERIES

Ø .024" (.60mm) CONTACTS

Materials: Beryllium copper wires and brass body
 Plating: Gold over nickel
 Resistance: < 5 milliohms
 Current Rating: 5 amps
 Extraction Force: Min. .5 oz., Max 3.2 oz.
 Life: > 100,000 cycles

Plating reference

Male Pins:

G = 10 µin. gold (min) over Ni

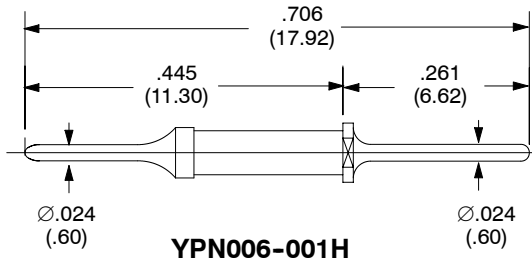
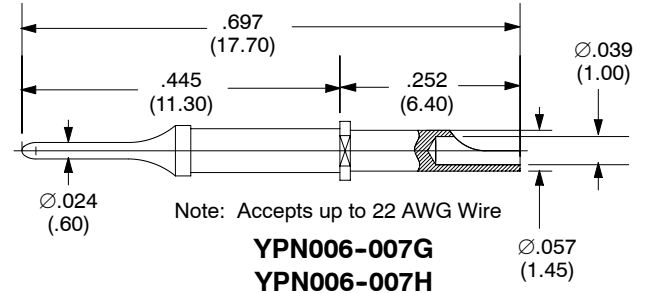
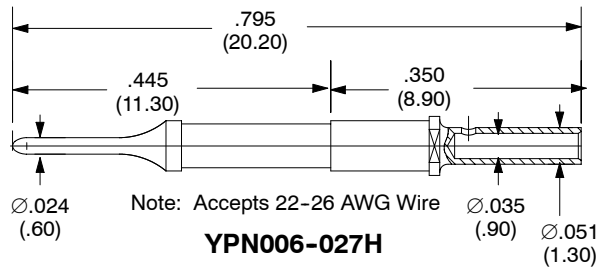
H = 50 µin. gold (min) over Ni

Female Sockets:

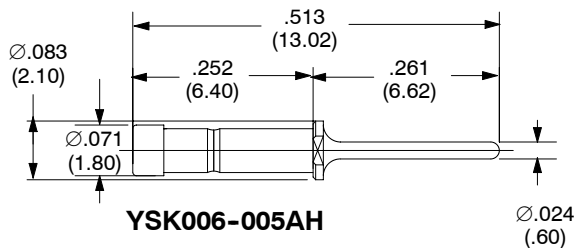
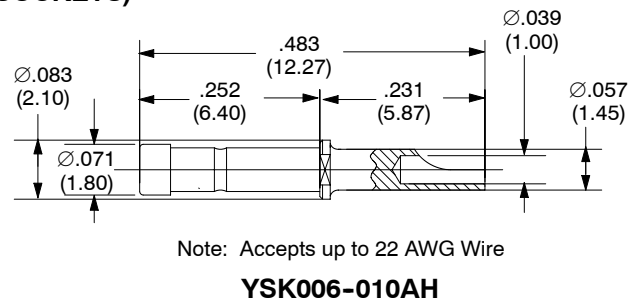
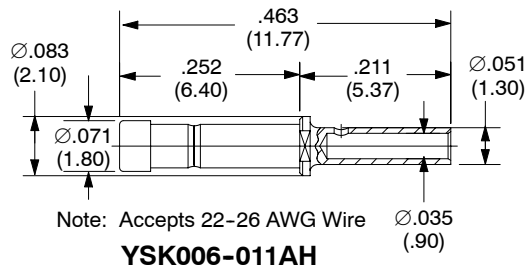
AH = 50 µin. gold (min) over Ni on mating surface and gold flash over Ni on termination

GT = 10 µin. gold (min) over Ni on mating surface and tin lead on socket body only.

MALE CONTACTS (PINS)



FEMALE CONTACTS (SOCKETS)



ORDERING INFORMATION

YSK 0060 - 011 AH

Notes

- Dimensions in inches (mm).

Plating (see above):
G, GT, H & AH

Model Number

Ø .030" (.76mm) CONTACTS

Materials: Beryllium copper wires and brass body
 Plating: Gold over nickel
 Resistance: < 5 milliohms
 Current Rating: 5 amps
 Extraction Force: Min. .5 oz., Max 3.2 oz.
 Life: > 100,000 cycles

Plating reference

Male Pins:

G = 10 µin. gold (min) over Ni

H = 50 µin. gold (min) over Ni

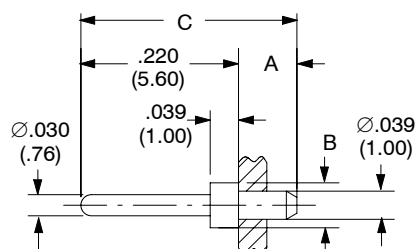
Female Sockets:

AH = 50 µin. gold (min) over Ni on mating

surface and gold flash over Ni on termination

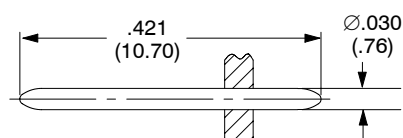
GT = 10 µin. gold (min) over Ni on mating

surface and tin lead on socket body only.



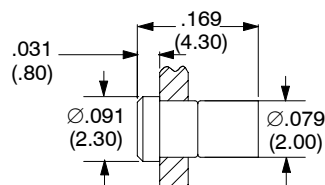
MALE CONTACTS (PINS)

PART NUMBER	DIM A	DIM B	DIM C
YPN0076-004H	.145 (3.69)	Ø.062 (1.58)	.365 (9.28)
YPN0076-005H	.150 (3.81)	Ø.081 (2.05)	.370 (9.40)
HSP030M2G HSP030M2H	.082 (2.08)	Ø.063 (1.60)	.302 (7.68)
HSP030M3G	.110 (2.80)	Ø.081 (2.05)	.331 (8.40)



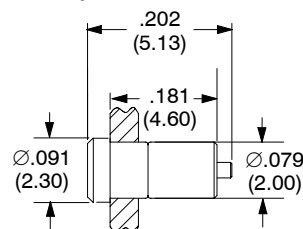
YPN0076-001H

FEMALE CONTACTS (SOCKETS)



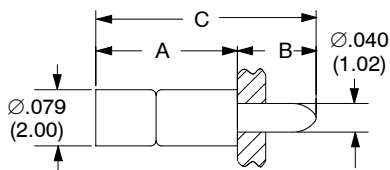
Note: Suggested Solder Mount Hole
 Ø.084 ± .002
 (Ø2.13 ± 0.05)

YSK0076-021AH

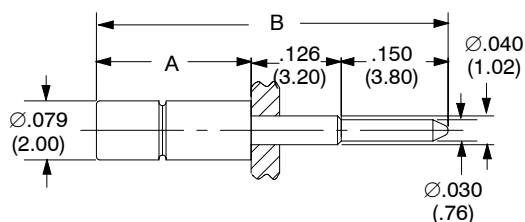


Note: Suggested Solder Mount Hole
 Ø.084 ± .002
 (Ø2.13 ± 0.05)

YSK0076-014AH



PART NUMBER	DIM A	DIM B	DIM C
YSK0076-011AH YSK0076-011GT	.199 (5.05)	.110 (2.80)	.309 (7.85)
YSK0076-012GT	.199 (5.05)	.187 (4.75)	.386 (9.80)
YSK0076-040AH YSK0076-040GT	.207 (5.27)	.135 (3.43)	.343 (8.70)



PART NUMBER	DIM A	DIM B
YSK0076-026AH	.209 (5.30)	.484 (12.30)
YSK0076-068AH	.217 (5.50)	.492 (12.50)

Notes

- Dimensions in inches (mm).

ORDERING INFORMATION

YSK 0076 - 011 AH



Y SERIES

Ø .040" (1.02mm) CONTACTS

Materials: Beryllium copper wires and brass body
 Plating: Gold over nickel
 Resistance: < 2.5 milliohms
 Current Rating: 7.5 amps
 Extraction Force: Min. 1.0 oz., Max 3.9 oz.
 Life: > 100,000 cycles

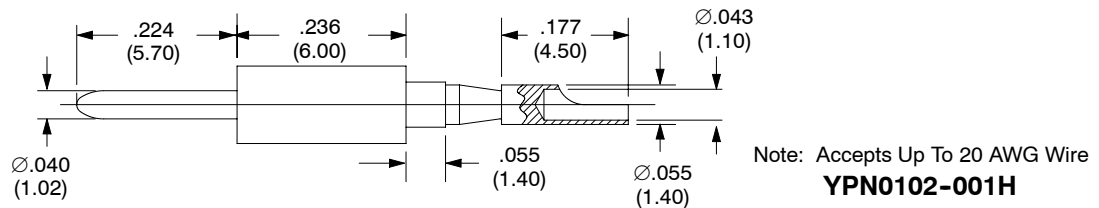
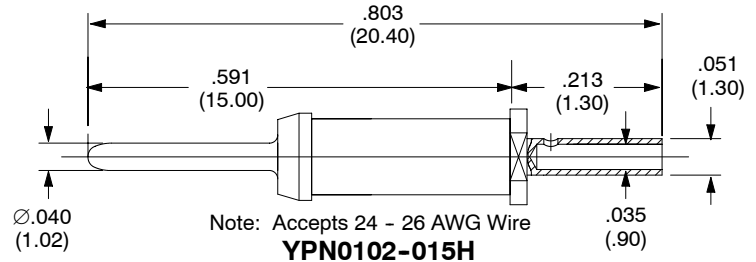
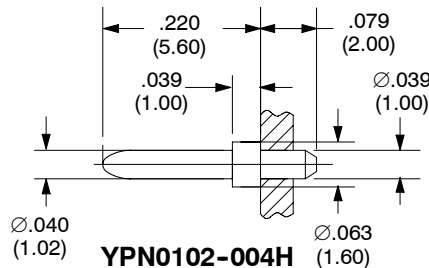
Plating Reference

Male Pins: G = 10 µin gold (min) over Ni

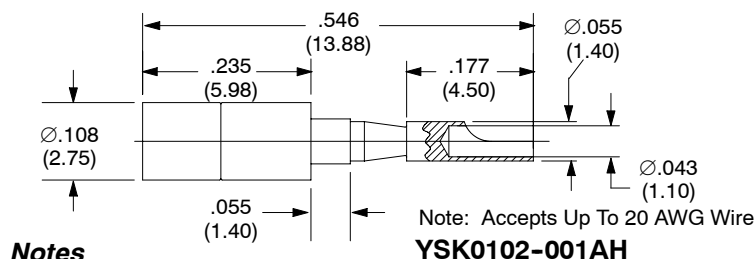
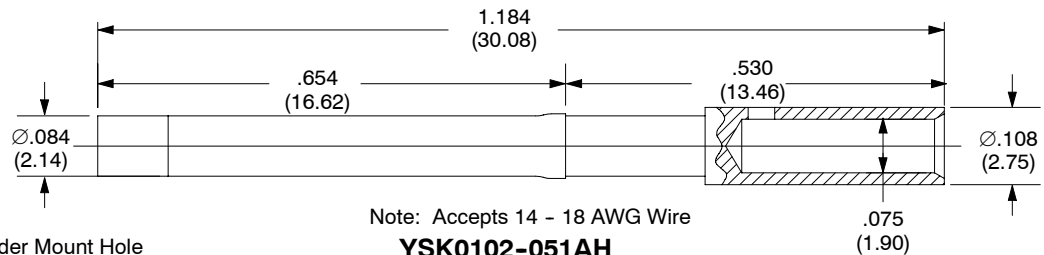
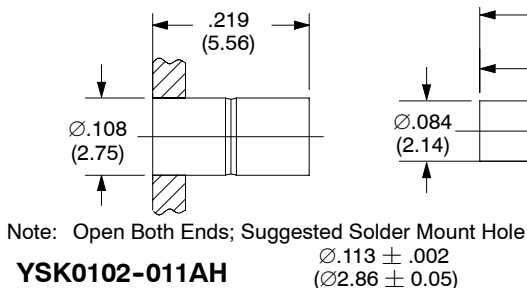
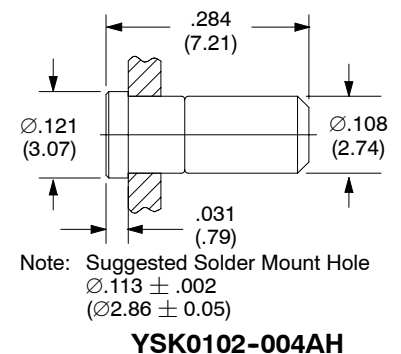
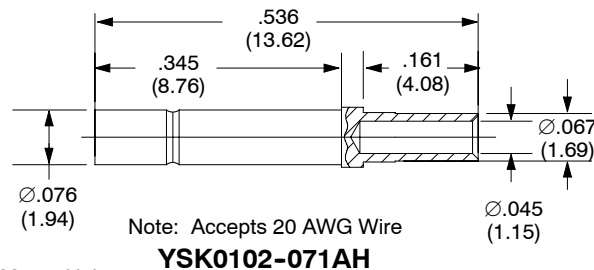
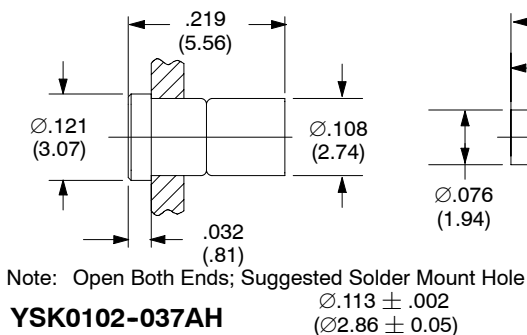
H = 50 µin gold (min) over Ni

Female Sockets: AH = 50 µin gold (min) over Ni on mating surface, gold flash over Ni on termination

MALE CONTACTS (PINS)



FEMALE CONTACTS (SOCKETS)



Notes

- Dimensions in inches (mm).

ORDERING INFORMATION

YSK 0102 - 001 AH

Plating (see above):
 H & AH

Model Number

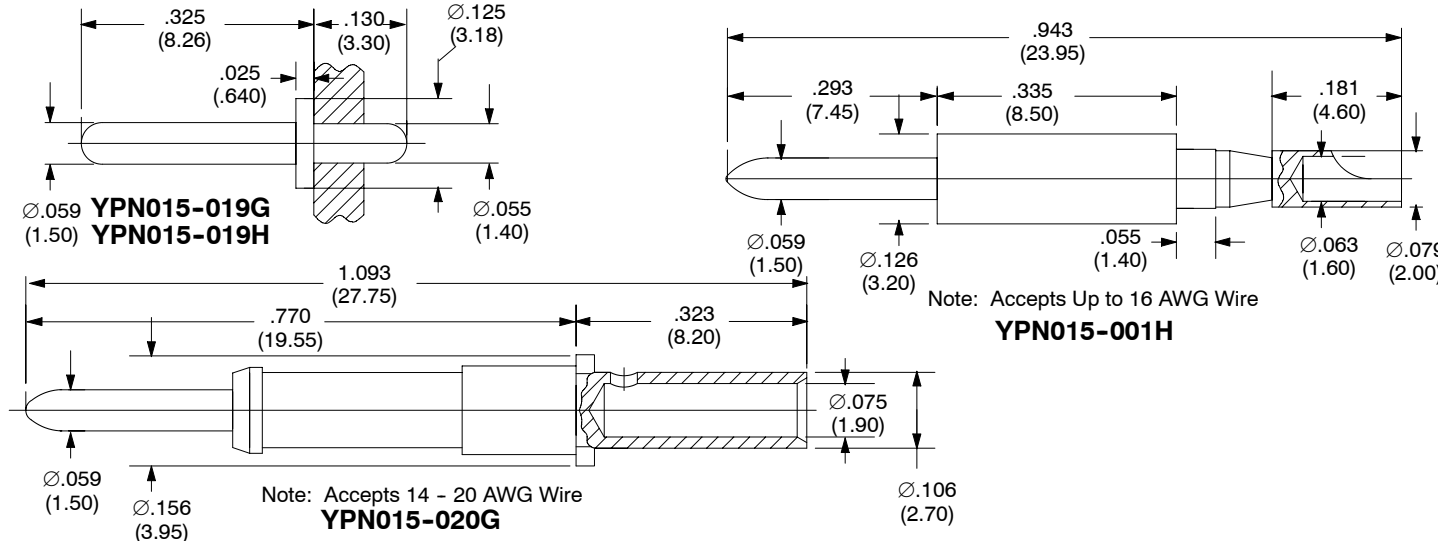
Ø .059" (1.5mm) CONTACTS

Materials: Beryllium copper wires and brass body
 Plating: Gold over nickel
 Resistance: < 2.5 milliohms
 Current Rating: 10 amps
 Extraction Force: Min. 1.2 oz., Max 5 oz.
 Life: > 100,000 cycles

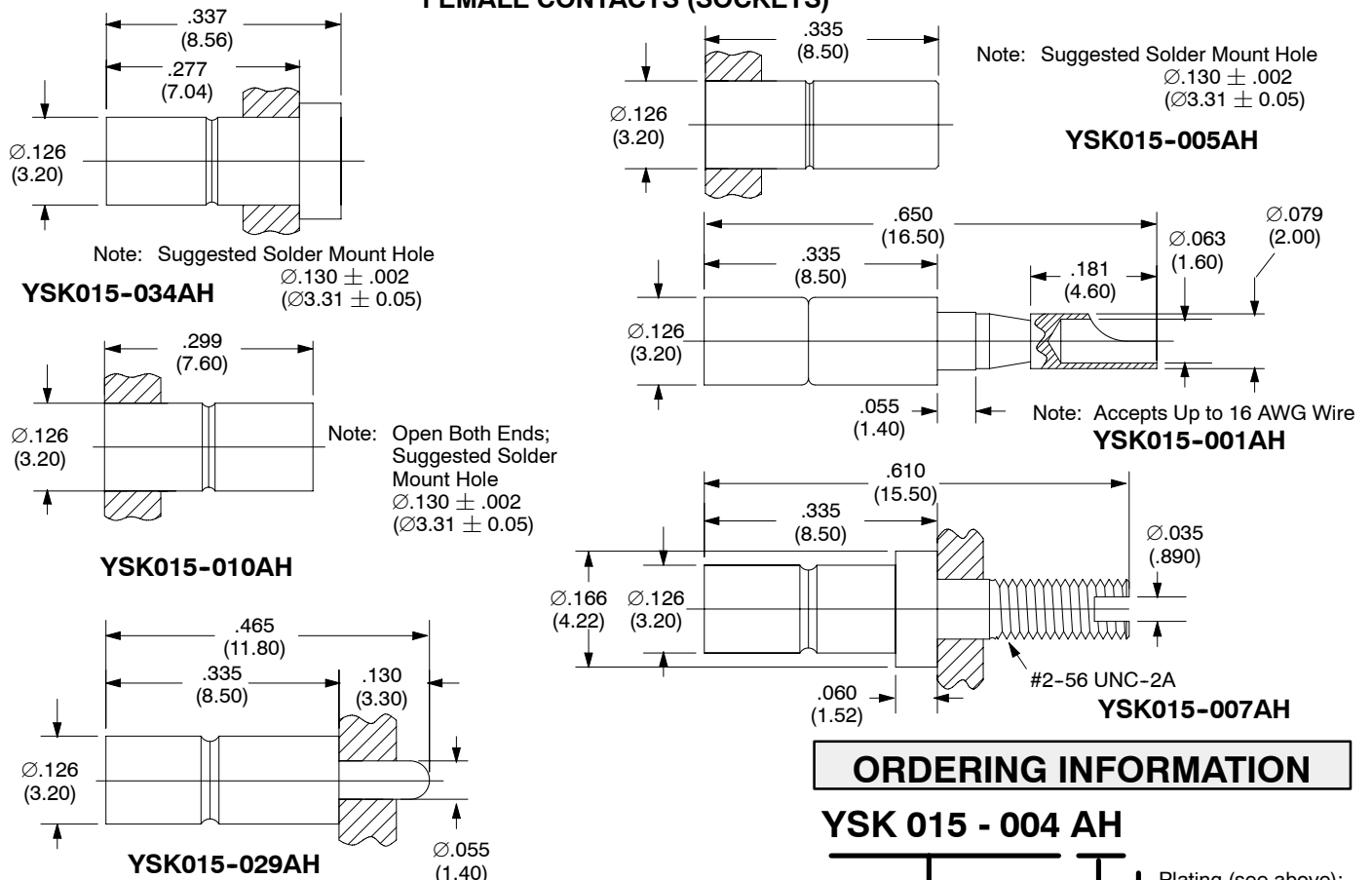
Plating Reference

Male Pins: G = 10 µin gold (min) over Ni
 H = 50 µin gold (min) over Ni
 Female Sockets: AH = 50 µin gold (min) over Ni on mating surface, gold flash over Ni on termination

MALE CONTACTS (PINS)



FEMALE CONTACTS (SOCKETS)



ORDERING INFORMATION

YSK 015 - 004 AH

Plating (see above):
 G, H & AH

Model Number

Notes

- Dimensions in inches (mm).

Y SERIES

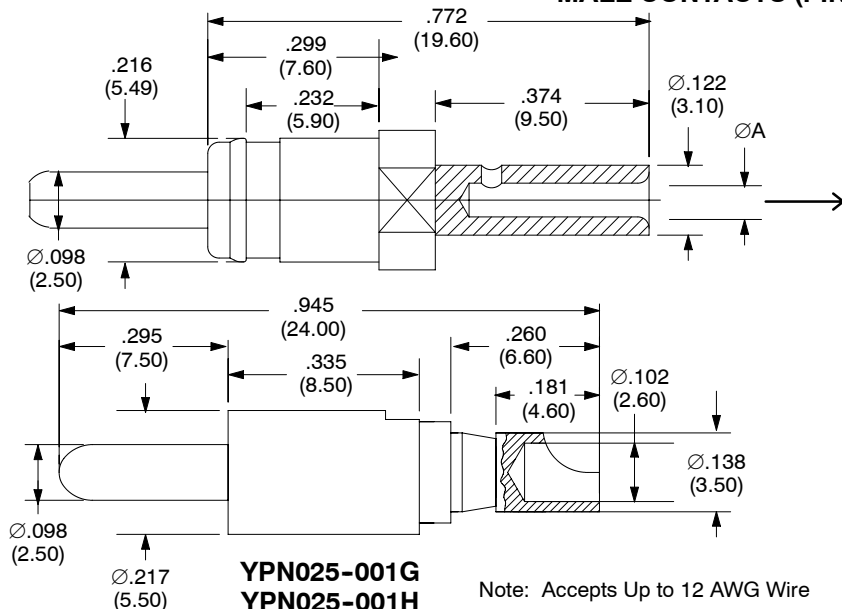
Ø .098" (2.5mm) CONTACTS

Materials: Beryllium copper wires and brass body
 Plating: Gold over nickel
 Resistance: < .8 milliohms
 Current Rating: 15 amps
 Extraction Force: Min. 6 oz., Max 25 oz.
 Life: > 100,000 cycles

Plating Reference

Male Pins: G = 10 µin gold (min) over Ni
 H = 50 µin gold (min) over Ni
 Female Sockets: AH = 50 µin gold (min) over Ni on mating surface, gold flash over Ni on termination

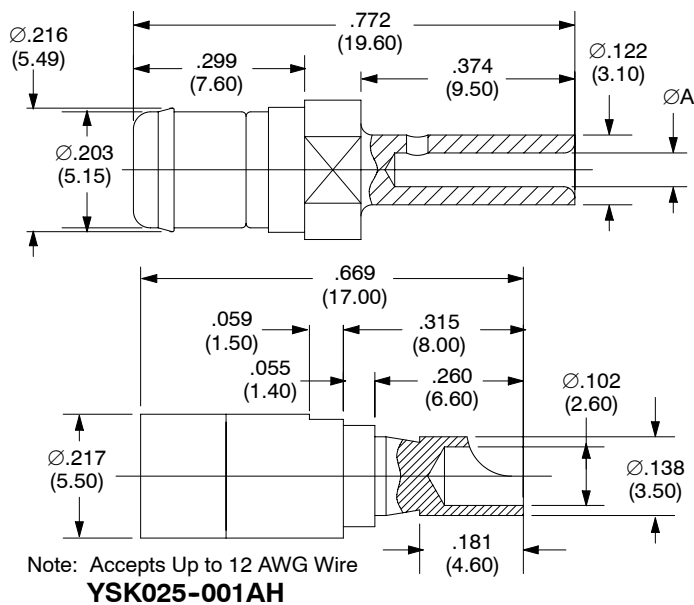
MALE CONTACTS (PINS)



PART NUMBER	DIM A	WIRE SIZE
YPN025-002G	Ø.059 (1.50)	18 - 22 AWG
YPN025-002H	Ø.059 (1.50)	18 - 22 AWG
YPN025-003G	Ø.076 (1.95)	13 - 14 AWG
YPN025-003H	Ø.076 (1.95)	13 - 14 AWG

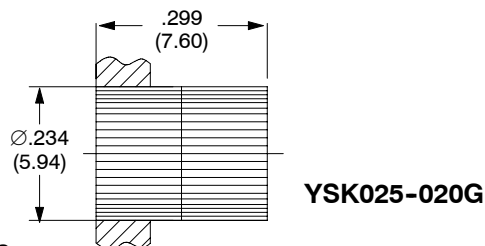
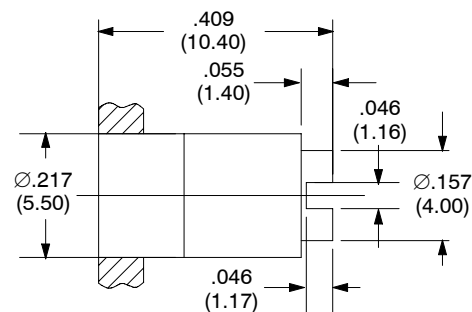
CRIMP TOOL: M300BT
 POSITIONER: SP611

FEMALE CONTACTS (SOCKETS)



PART NUMBER	DIM A	WIRE SIZE
YSK025-003AH	Ø.059 (1.50)	18 - 22 AWG
YPN025-004AH	Ø.059 (1.50)	13 - 14 AWG

CRIMP TOOL: M300BT
 POSITIONER: SP611

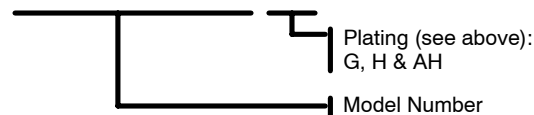


Notes

- Dimensions in inches (mm).

ORDERING INFORMATION

YSK 025 - 001 AH

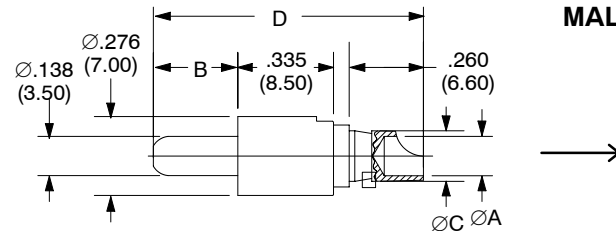


Ø .138" (3.5mm) CONTACTS

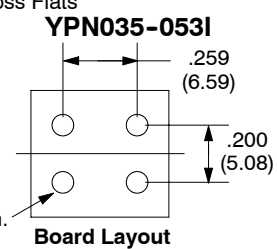
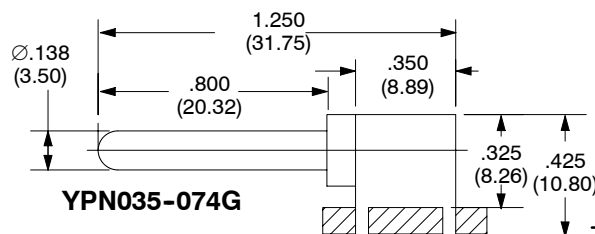
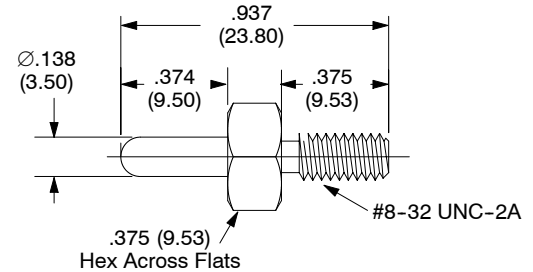
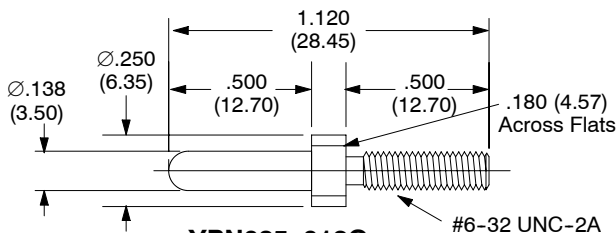
Materials: Beryllium copper wires and brass body
 Plating: Gold over nickel
 Resistance: < .5 milliohms
 Current Rating: 25, 40, & 50 amps
 Extraction Force: Min. 7 oz., Max 32 oz.
 Life: > 100,000 cycles

Plating Reference
 Male Pins: G = 10 µin gold (min) over Ni
 H = 50 µin gold (min) over Ni
 Female Sockets: AH = 50 µin gold (min) over Ni on mating surface, gold flash over Ni on termination

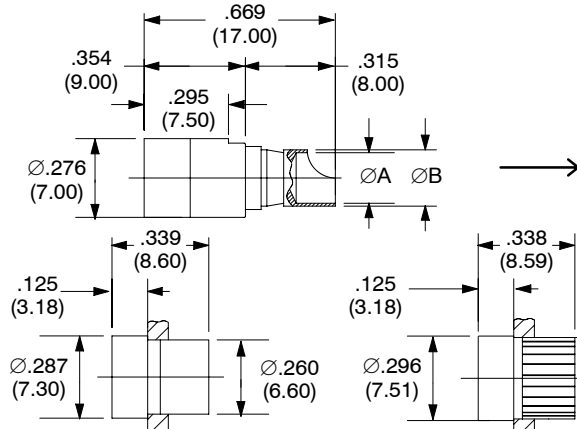
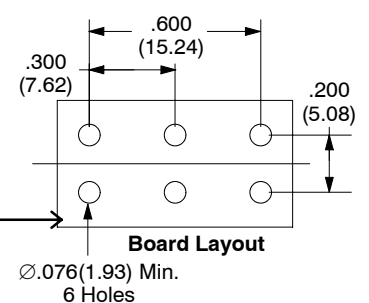
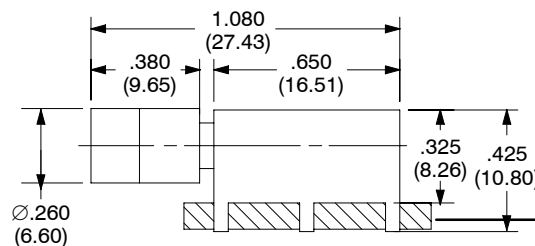
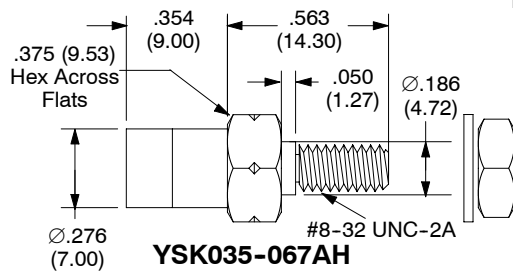
MALE CONTACTS (PINS)



Part Number	Dim A	Dim B	Dim C	Dim D	Wire Size	Current Rating
YPN035-001H	.137 (3.50)	.295 (7.50)	.177 (4.50)	.945 (24.00)	10 AWG	25 Amps
YPN035-024H	.177 (4.50)	.311 (9.50)	.193 (4.90)	.193 (4.90)	8 AWG	50 Amps



FEMALE CONTACTS (SOCKETS)



Part Number	Dim A	Dim B	Wire Size	Current Rating
YSK035-001AH	.137 (3.50)	.177 (4.50)	10 AWG	25 Amps
YSK035-006AH	.137 (3.50)	.177 (4.50)	10 AWG	40 Amps
YSK035-027AH	.177 (4.50)	.193 (4.90)	8 AWG	50 Amps

ORDERING INFORMATION

YSK 035 - 001 AH

Plating (see above):
 G, H & AH

Model Number

Note: Suggested Solder Mount Hole
 Ø.264 ± .002 (Ø6.70 ± 0.05)

YSK035-004AH 25 AMPS

Notes

- Dimensions in inches (mm).

Y SERIES

Ø .169" (4.3mm) CONTACTS

Materials: Beryllium copper wires and brass body
 Plating: Gold over nickel
 Resistance: < .37 milliohms
 Current Rating: 100 amps
 Extraction Force: Min. 15 oz., Max 90 oz.
 Life: > 100,000 cycles

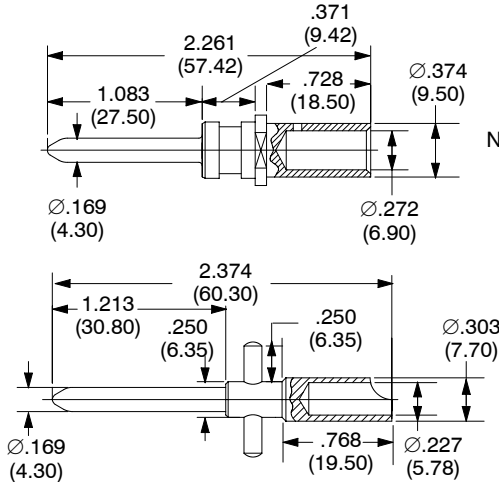
Plating Reference

Male Pins: G = 10 µin gold (min) over Ni

H = 50 µin gold (min) over Ni

Female Sockets: AH = 50 µin gold (min) over Ni on mating surface, gold flash over Ni on termination

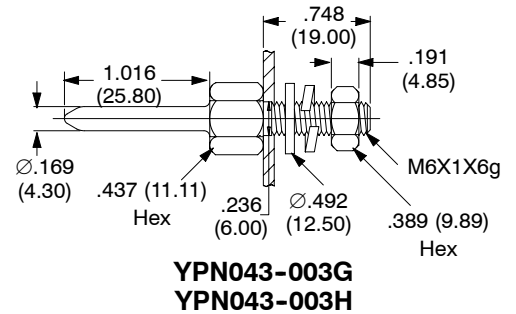
MALE CONTACTS (PINS)



Note: Accepts 4 AWG Wire
YPN043-016RG

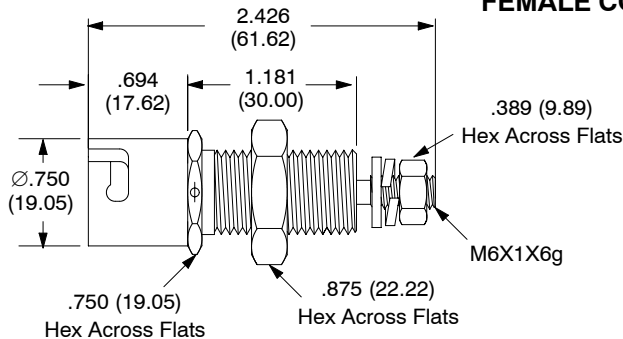
Note: Accepts Up To 5 AWG Wire
 Mates Only With YSK043-008AH

YPN043-009H



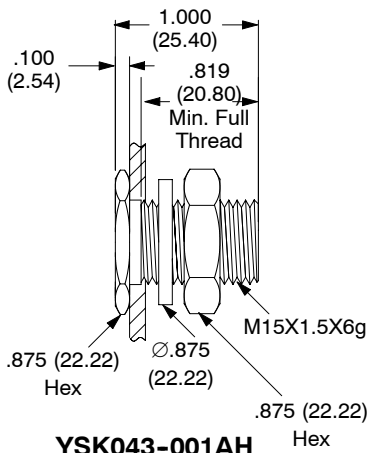
YPN043-003G
YPN043-003H

FEMALE CONTACTS (SOCKETS)

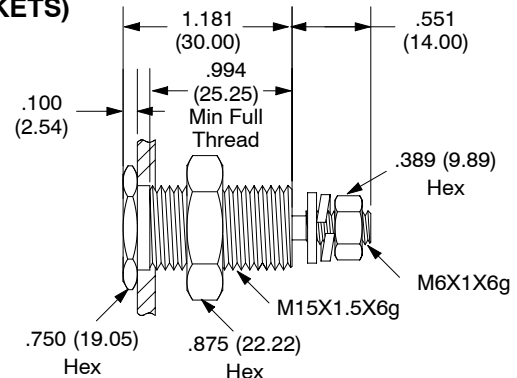


Note: Mates Only With YPN043-009H

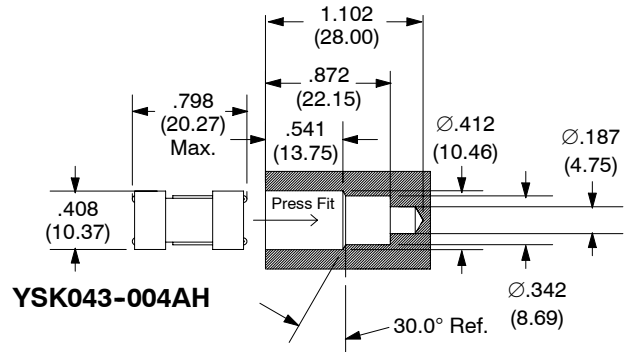
YSK043-008AH



YSK043-001AH



YSK043-003AH



YSK043-004AH

ORDERING INFORMATION

YSK 043 - 001 AH

Plating:
 G, H & AH

Model Number

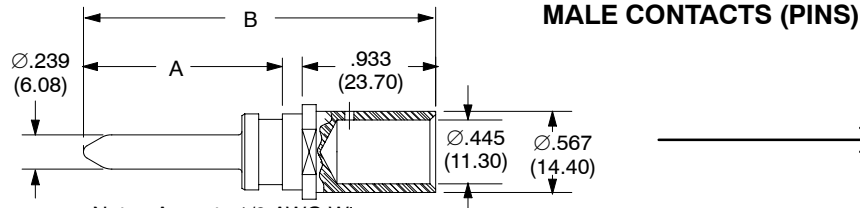
Notes

Toll Free 1-800-225-9228 or 1-888-HYPERTAC

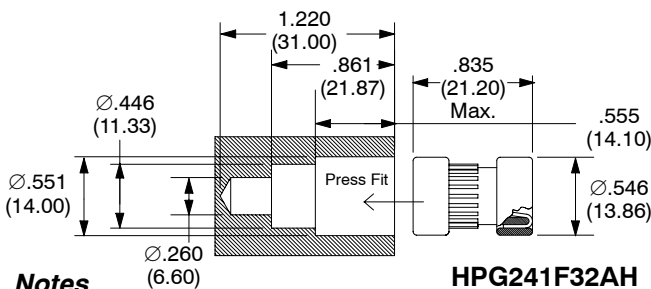
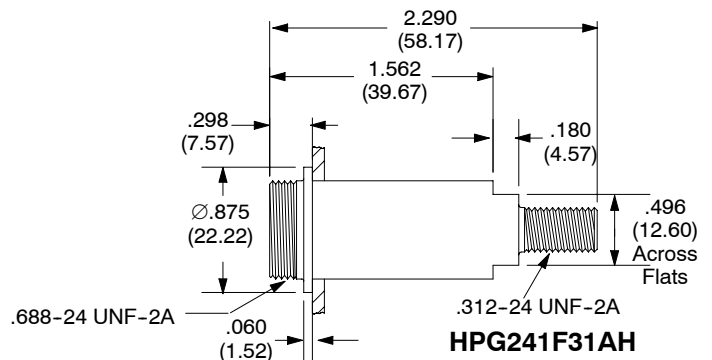
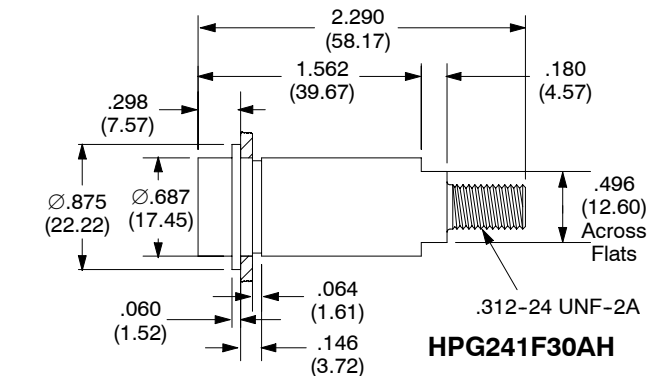
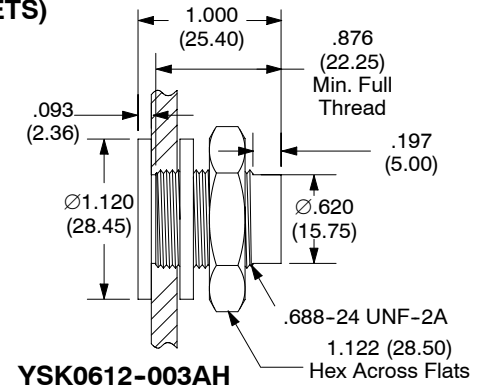
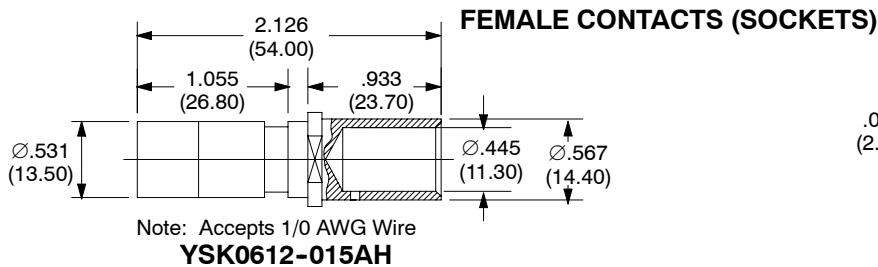
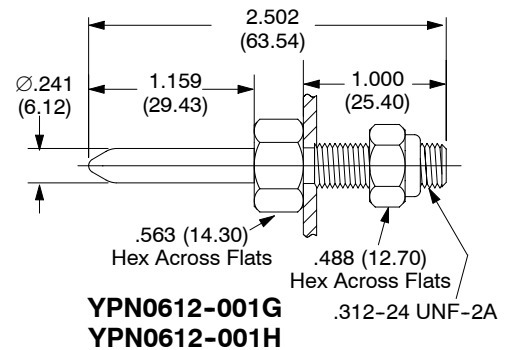
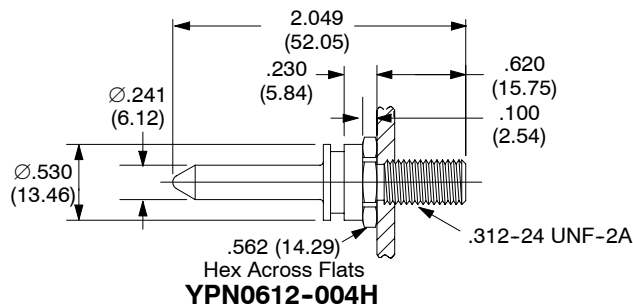
Ø .241" (6.12mm) CONTACTS

Materials: Beryllium copper wires and brass body
 Plating: Gold over nickel
 Resistance: < .25 milliohms
 Current Rating: 200 amps
 Extraction Force: Min. 80 oz., Max 160 oz.
 Life: > 100,000 cycles

Plating Reference
 Male Pins: G = 10 µin gold (min) over Ni
 H = 50 µin gold (min) over Ni
 Female Sockets: AH = 50 µin gold (min) over Ni on mating surface, gold flash over Ni on termination



Part Number	Dim A	Dim B
YPN0612-021RI	1.392 (35.35)	2.463 (62.55)
YPN0612-023RI	1.626 (41.30)	2.697 (68.50)



ORDERING INFORMATION

YSK0612 - 003 AH

Plating:
 G, H, AH
 Model Number

Notes

- Dimensions in inches (mm).

Y SERIES

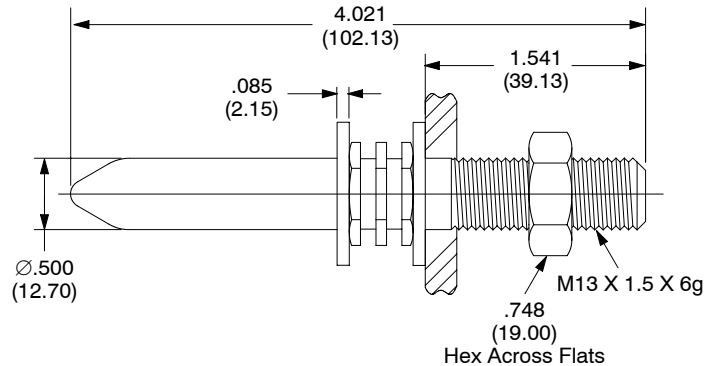
Ø .500" (12.70mm) CONTACTS

Materials: Beryllium copper wires and brass body
 Plating: Gold over nickel
 Resistance: < .08 milliohms
 Current Rating: 350 amps
 Extraction Force: Min. 9 lbs., Max 20 lbs.
 Life: > 100,000 cycles

Plating Reference

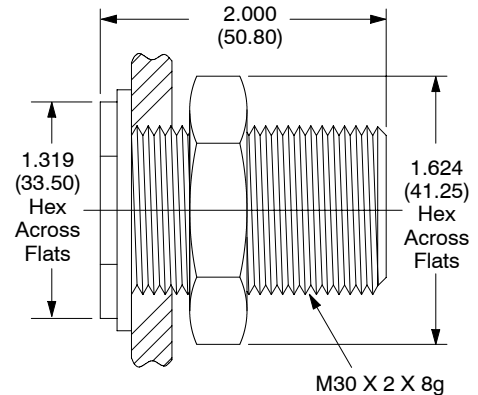
Male Pins: G = 10 µin gold (min) over Ni
 H = 50 µin gold (min) over Ni
 Female Sockets: AH = 50 µin gold (min) over Ni on mating surface, gold flash over Ni on termination

MALE CONTACTS (PINS)



YPN127-004G
 YPN127-004H

FEMALE CONTACTS (SOCKETS)



YSK127-004AH

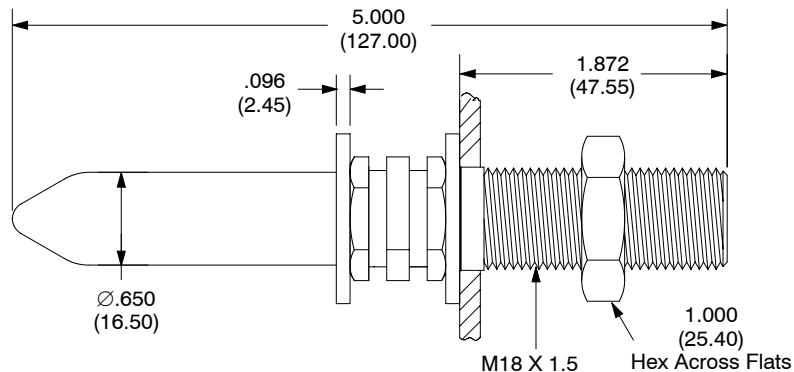
Ø .650" (16.50mm) CONTACTS

Materials: Beryllium copper wires and brass body
 Plating: Gold over nickel
 Resistance: < .04 milliohms
 Current Rating: 500 amps
 Extraction Force: Min. 20 lbs., Max 37 lbs.
 Life: > 100,000 cycles

Plating Reference

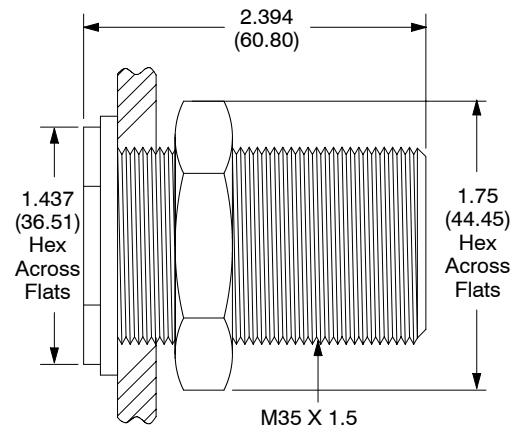
Male Pins: G = 10 µin gold (min) over Ni
 H = 50 µin gold (min) over Ni
 Female Sockets: AH = 50 µin gold (min) over Ni on mating surface, gold flash over Ni on termination

MALE CONTACTS (PINS)



YPN165-002G
 YPN165-002H

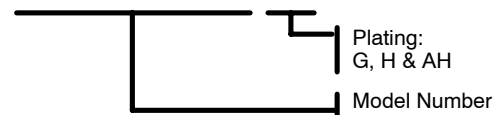
FEMALE CONTACTS (SOCKETS)



YSK165-001AH

ORDERING INFORMATION

YSK 127 - 004 AH



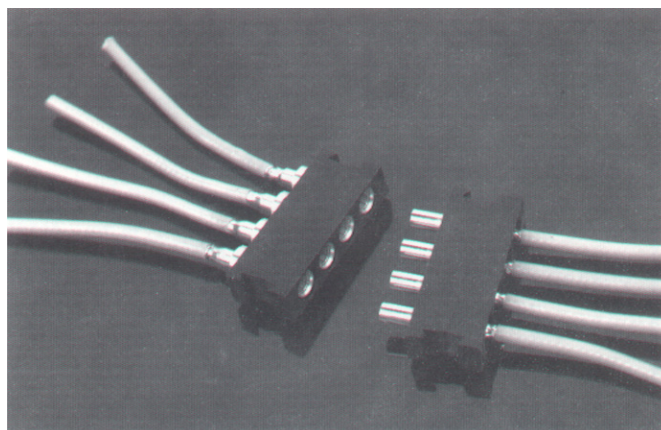
Notes

- Dimensions in inches (mm).

COAXTAC

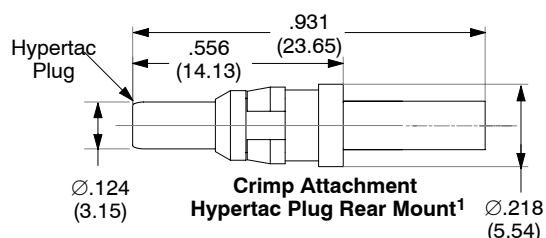
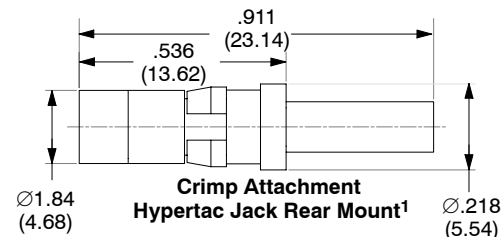
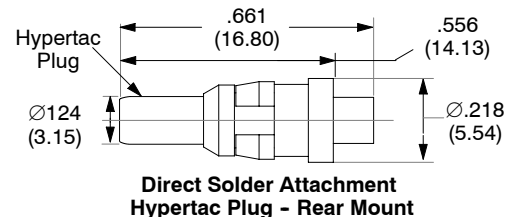
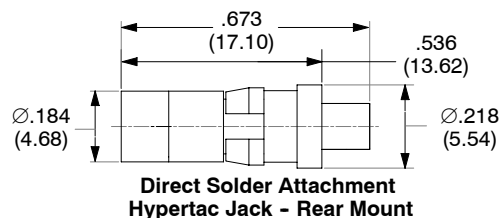
Coaxial Contacts

- 1.20:1 VSWR max. to 3GHz
- 1.50:1 VSWR max. to 18GHz
- >25,000 mating cycles
- 3 ounce average insertion force
- 50 Ohm impedance
- Mounted in Din 41612 insulator cavities
- Hypertac inner and outer contacts.



General Specifications

Nominal Impedance	50 ohms
Frequency Range	DC-3 GHz with RG 316 DC-18 GHz with RG 405
Temperature Rating	-55°C to 125°C
Materials	Brass per ASTM-B-16, Beryllium Copper per ASTM-B-196, Beryllium Copper per QQ-C-530, PTFE Fluorocarbon per ASTM-D-1457.
Finishes	
Center Contacts and Housings	Gold per MIL-G-45204 over nickel-plate per QQ-N-290 over copper plate per MIL-C-14550.
Wire	Gold per MIL-G-45204 over nickel plate per QQ-N-290.
Electrical (Based on RG-405 Semi Rigid Cable)	
Voltage Standing Wave Ratio	(DC to 3GHz) 1.20:1 max. (3GHz to 18GHz) 1.50:1 max.
RF Transmission Loss	0.50 dB max. @ 18 GHz
Insulation Resistance	5,000 megohms min.
Dielectric Withstanding Voltage	500 VRMS
Contact Resistance	
Inner Contact	8 milliohms max.
Outer Contact	2 milliohms max.
Mechanical	
Extraction force	1.5 - 6.0 oz max., 3 oz. average
Connector Durability	Greater than 25,000 cycles



ORDERING INFORMATION

DIRECT SOLDER ATTACHMENT

Part Number	Description	Cable Type	Max Frequency
YCX0315-001AH	Hypertac [®] Socket	RG-405, T-Flex 405	18 GHz
YCX0315-003H	Hypertac [®] Pin	RG-405, T-Flex 405	18 GHz

CRIMP ATTACHMENT

Part Number	Description	Cable Type	Max Frequency
YCX0315-002AH	Hypertac [®] Socket	RG-316	3 GHz
YCX0315-004H	Hypertac [®] Pin	RG-316	3 GHz

Notes:

- The connector is shown with the outer sleeve in place.
- Dimensions in inches (mm).

ACCESSORIES

For Inner Conductor Crimping

Crimp Tool: AFM8

Positioner: T1957

For Outer Conductor Crimping

Crimp Tool: HX3

Die Set: T1958

Contact removal tool: T1982