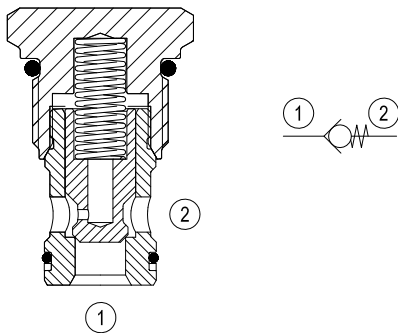


Check, poppet type

Common cavity, Size 12

VUCN-12A

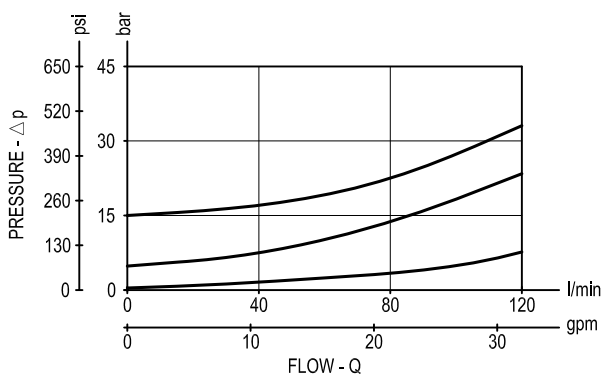
04.31.28.00.57 - Z



Description

When pressure at 1 rises above the spring bias pressure, the poppet is lifted and flow allowed from 1 to 2. The valve is closed (checked) from 2 to 1. Precision machining and hardening processes allow virtually leak-free performance in the checked condition.

Performance

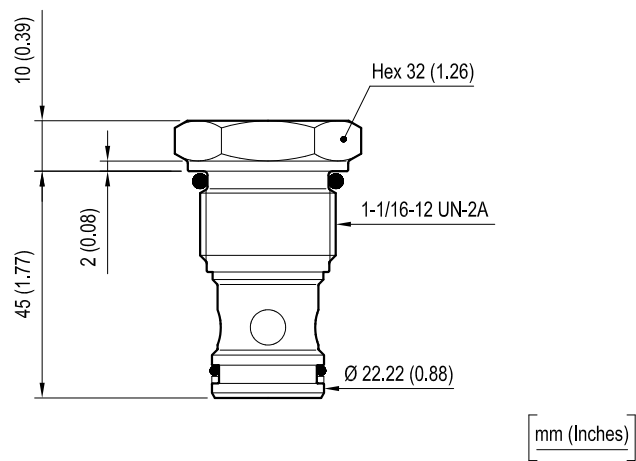


Technical data

Max. operating pressure	bar (psi)	350 (5000)
Max. flow	l/min. (gpm)	120 (32)
Max. internal leakage	drops/min.	5
Fluid temperature range	°C (°F)	-30 to 100 (-22 to 212)
Installation torque	Nm (ft-lbs)	81-95 (60-70)
Weight	kg (lbs)	0.18 (0.4)
Cavity		CA-12A-2N see data sheet RE 18325-70
Seal kit (*)	code material no.	RG12A2010520100 R901111377
Fluids		Mineral-based or synthetics with lubricating properties at viscosities of 5 to 800 mm ² /s (cSt)
Filtration		Nominal value max. 10µm (NAS 8) ISO 4406 19/17/14
Installation		No restrictions
Other Technical Data		See data sheet RE 18350-50

(*) Only external seals for 10 valves

Dimensions



Ordering code

04.31.28.00	57	Z	00	*
-------------	----	---	----	---

Check, poppet type

Series 0/A to L
unchanged performances and dimensions

Version and options standard

Common cavity, Size 12

SPRINGS	
Cracking pressure bar (psi)	
= 00	1 (15)
= 05	5 (75)
= 08	8 (115)
= 15	15 (220)

Type	Material number
043128005700000	R901106613
043128005705000	R901106614
043128005708000	R930000490
043128005715000	R901106615

Type	Material number