

# Relief, direct acting guided poppet type Special cavity, 009

VS-80

04.11.05 - X - 99 - Z

**RE 18318-25**

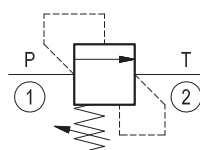
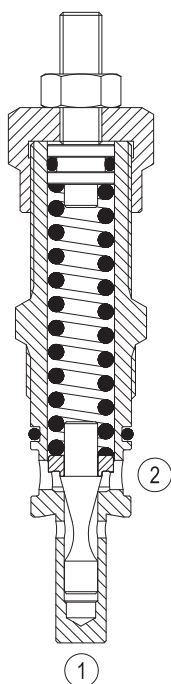
Edition: 01.2019

Replaces: 07.2018



## Description

Flow is blocked from 1 to 2 until pressure increases to meet the selected valve setting, lifting the poppet from its seat and allowing relief flow through 2 to tank. Pressure at 2 is additive to the relief setting of the valve. The unique Bosch Rexroth Oil Control poppet design provides enhanced stability at all flows and pressures.



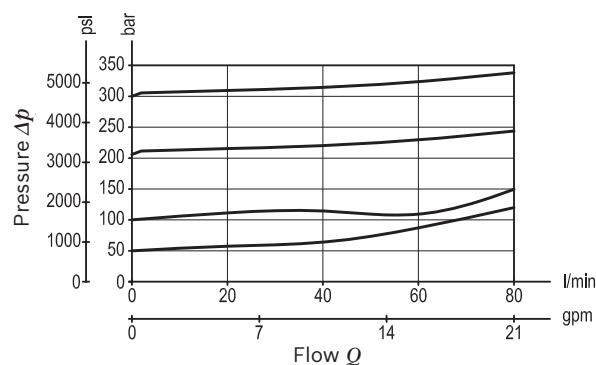
## Technical data

Max. operating pressure port 1 (P)	350 bar (5000 psi)
Max. pressure admitted port 2 (T)	140 bar (2000 psi)
Max. flow	80 l/min (21 gpm)
Max. internal leakage <sup>1)</sup>	15 drops/min.
Fluid temperature range	-30 to 100 °C (-22 to 212 °F)
Installation torque	83 - 92 Nm (61 - 68 ft-lbs)
Weight	0.35 kg (0.77 lbs)
MTTFD	150 years see RE 18350-51
Special cavity	009 (see data sheet 18325-75)
Lines bodies and standard assemblies	Please refer to section "Hydraulic integrated circuit" or consult factory
Seal kit <sup>2)</sup>	Code: RG0009010000100 material no: R930001694
Fluids	Mineral-based or synthetics with lubricating properties at viscosities of 10 to 500 mm <sup>2</sup> /s (cSt)
Recommended degree of fluid contamination	Nominal value max. 10µm (NAS 8) / ISO 4406 20/18/15
Installation position	No restrictions
Other Technical Data	See data sheet 18350-50

1) At 80% of pressure setting

2) Only external seals for 10 valves

## Characteristic curve



Ordering code

04.11.05	X	99	Z	00	*
----------	---	----	---	----	---

Series 0/A to L  
unchanged performances and dimensions

Version and options standard

Relief, direct acting guided  
poppet type

Adjustments

- 03 Leakproof hex. socket screw
- 04 Handknob and locknut

99 Special cavity, 009

SPRINGS			
	Adj. press. range bar (psi)	Pressure increase bar/turn (psi/turn)	Std. setting bar (psi) Q=5 l/min
05	* 5-50 (75-725)	6 (87)	50 (725)
10	30-100 (435-1450)	12 (174)	100 (1450)
20	80-250 (1160-3600)	27 (392)	200 (2900)
35	140-350 (2000-5000)	62 (899)	350 (5000)

Note: Special settings available. Contact factory authorized representative for ordering code.  
\* minimum pressure setting intended with Q=5 l/min

Preferred types

Type	Material number
041105039905000	R930000117
041105039910000	R930000119
041105039920000	R901113620
041105049910000	R930000121

Type	Material number
041105049920000	R930000122
041105039935000	R930008396

Dimensions

