

# Solenoid operated valves pilot operated poppet type 2-way normally closed proximity sensor - extra spring Special cavity, 017-E

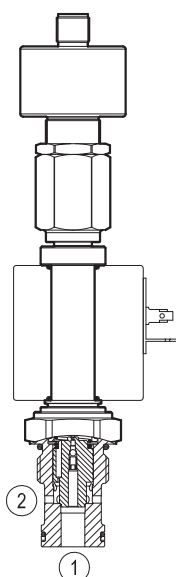
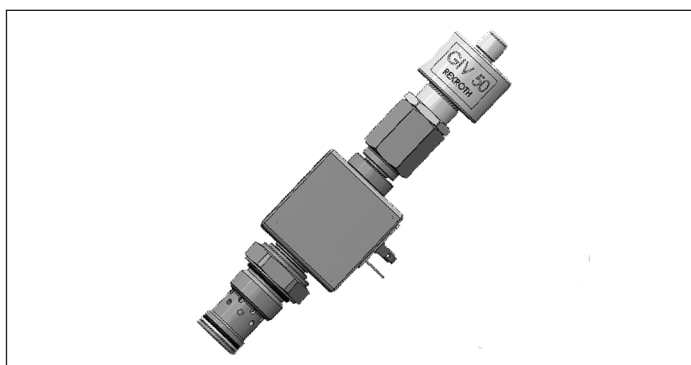
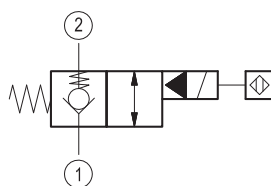
**RE 18325-04**

Edition: 01.2016

Replaces: 10.2013

VESP-12G-16A/00-2A05-N7

OD.15.05.17.65.04 - Z

▼ **Version 05****Technical data**

General		
Weight		0.75 kg (1.65 lbs)
Installation orientation		Optional
Ambient temperature range		-25 to 60 °C (-13 to 140 °F)
Hydraulic		
Max. operating pressure		350 bar (5000 psi)
Flow range		5 - 70 l/min (1 - 18 gpm)
Max. internal leakage		15 drops/min.
Fluid temperature range		-20 to 80 °C (-4 to 176 °F)
Fluids: Mineral-based or synthetics with lubricating properties at viscosities of 15 to 380 mm²/s (cSt)		
Installation torque		50 - 55 Nm (37-41 ft-lbs)
Recommended degree of fluid contamination		Nominal value max. 10 µm (NAS 8) ISO 4406 19/17/14
MTTFd		150 years see RE 18350-51
Special cavity		017-E see 18325-75
Lines bodies and standard assemblies		Please refer to section “Hydraulic integrated circuit” or consult factory
Seal kit – version 05	code material no.	RG17E201052010 R934003562
Other technical data		See data sheet 18350-50

Electrical	
Type of voltage	DC voltage
Coil type	S7 see 18325-90
Supply voltage	See data sheet 18325-90
Nominal voltage	± 10%
Power consumption	30 W
Duty cycle coil	100 % see 18325-90
Type of protection	See data sheet 18325-90

Please consider that a proper function of the valve is guaranteed only if the position of the monitor is not modified; each cartridge is provided of a torque confirmation mark, intended as anti-tampering device.

Sensor is protected against short circuit polarity inversion.

Ordering code

OD.15

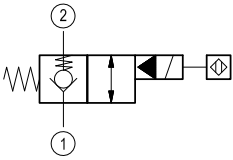
05

17

6504

Z

Solenoid operated valves  
pilot operated poppet type  
2-way normally closed proximity sensor - extra spring



OB    12 V DC

OC    24 V DC

Note: please consult factory for  
different voltages.

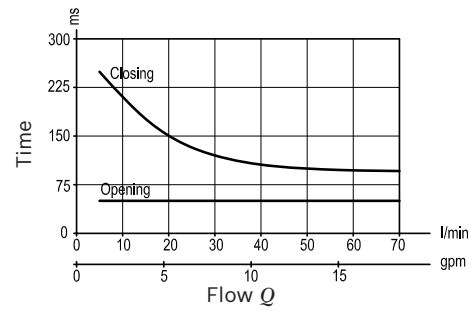
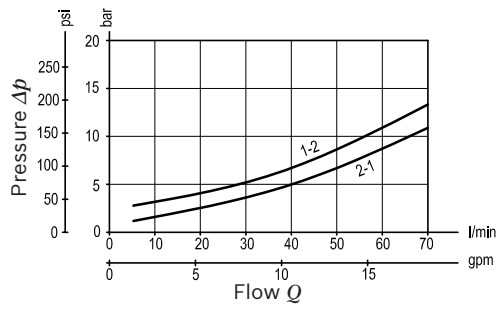
Special cavity: 017-E

Type	Material number
OD1505176504OB	R934004675
OD1505176504OC	R934004674

Type	Material number

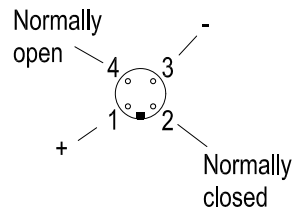
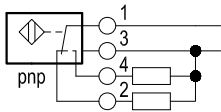
## Characteristic curves

Version 05



## Sensor data:

	12 V DC	24 V DC
Supply voltage	10.5 to 16	20 to 32
Output load	$\leq 400$ mA	$\leq 400$ mA



Dimensions

▼ Version 05: Solenoid operated valve, poppet 2-way  
normally closed proximity sensor - extra spring

