

Relief, direct acting guided poppet type Special cavity, 008

VS-30

04.11.18 - X - 99 - Z

RE 18318-23

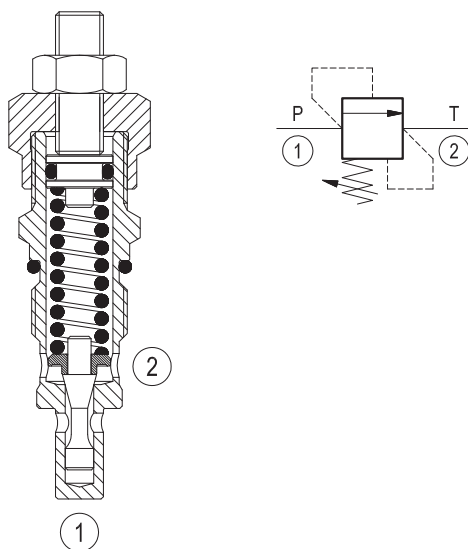
Edition: 03.2016

Replaces: 07.2010



Description

Flow is blocked from 1 to 2 until pressure increases to meet the selected valve setting, lifting the poppet from its seat and allowing relief flow through port 2 to tank. Pressure at port 2 is additive to the relief setting of the valve. The unique Bosch Rexroth Oil Control poppet design provides enhanced stability at all flows and pressures.



Technical data

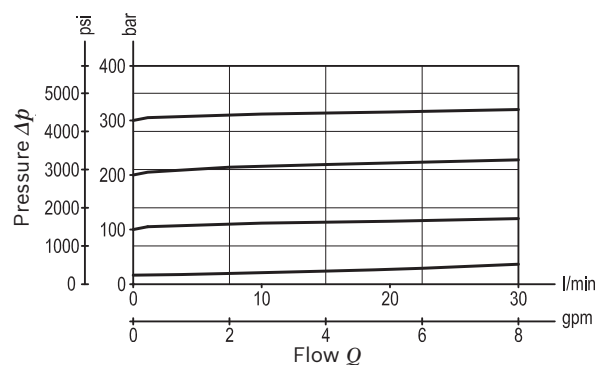
Max. operating pressure port 1 (P)	350 bar (5000 psi)
Max. pressure admitted port 2 (T)	140 bar (2000 psi)
Max. flow	30 l/min (8 gpm)
Max. internal leakage ¹⁾	15 drops/min.
Fluid temperature range	-30 to 100 °C (-22 to 212 °F)
Installation torque	45 - 50 Nm (33 - 37 ft-lbs)
Weight ²⁾	0.17 kg (0.38 lbs)
Special cavity	008 (see data sheet 18325-75)
Lines bodies and standard assemblies	Please refer to section "Hydraulic integrated circuit" or consult factory
Seal kit ³⁾	Code: RG0008010000100 material no: R930001692
Fluids	Mineral-based or synthetics with lubricating properties at viscosities of 10 to 500 mm ² /s (cSt)
Recommended degree of fluid contamination	Nominal value max. 10µm (NAS 8) / ISO 4406 19/17/14
Installation position	No restrictions
Other Technical Data	See data sheet 18350-50

1) At 80% of pressure setting

2) Standard version 03 type

3) Only external seals for 10 valves

Characteristic curve



Ordering code

04.11.18	X	99	Z	00	*
----------	---	----	---	----	---

Relief, direct acting guided
poppet type

Adjustments

- 03 Leakproof hex. socket screw
- 04 Handknob and locknut

99 Special cavity, 008

Series O/A to L
unchanged performances and dimensions

Version and options standard

	SPRINGS		
	Adj. press. range bar (psi)	Pressure increase bar/turn (psi/turn)	Std. setting bar (psi) Q=5 l/min
05	* 5-50 (75-725)	12 (174)	50 (725)
10	30-100 (435-1450)	24 (348)	100 (1450)
20	50-210 (725-3000)	47 (682)	200 (2900)
35	100-350 (1450-5000)	82 (1189)	350 (5000)

Note: Special settings available. Contact factory authorized representative for ordering code.
* minimum pressure setting intended with Q=5 l/min

Preferred types

Type	Material number
041118039905000	R901113613
041118039910000	R901113614
041118039920000	R901226876
041118039935000	R901113617

Type	Material number
041118049905000	R930000148
041118049910000	R930000149
041118049920000	R901127942
041118049935000	R930000151

Dimensions

