

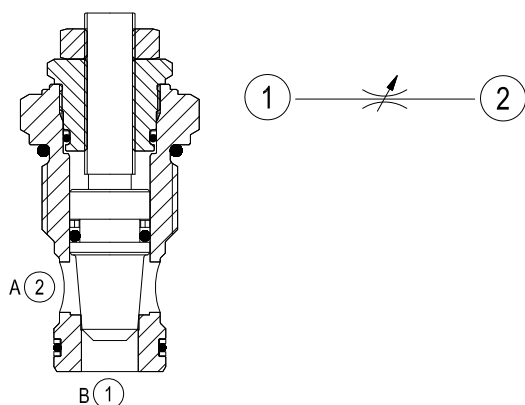
RE 18321-28/01.11 1/2
Replaces: RE 00162-02/01.06

Flow control valve, cartridge restrictor

Common cavity, Size 12

ST-C-12

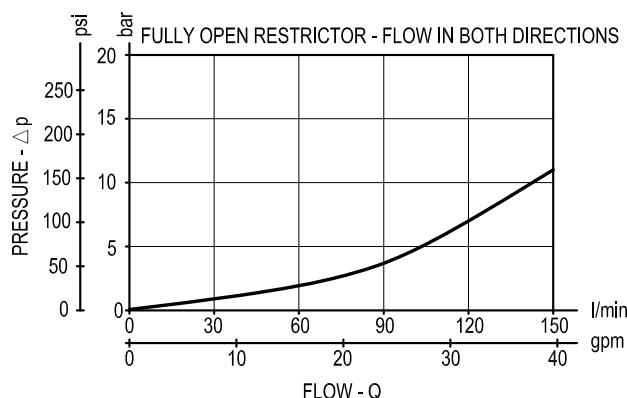
OD.21.01 - X - 89



Description

Increasing the orifice value from fully closed to fully open, flow is permitted and regulated bi-directional from 1 to 2 and from 2 to 1.

Performance

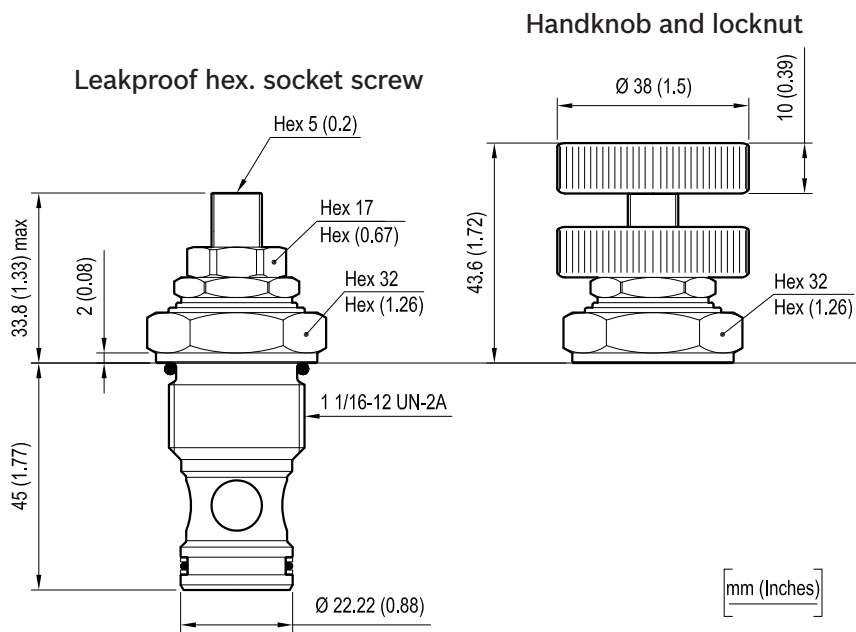


Technical data

Max. operating pressure	bar (psi)	350 (5000)
Rated flow	l/min. (gpm)	150 (39)
Fluid temperature range	°C (°F)	-30 to 100 (-22 to 212)
Installation torque	Nm (ft-lbs)	54-66 (40-49)
Weight	kg (lbs)	0.31 (0.68)
Cavity		CA-12A-2N see data sheet RE 18325-70
Seal kit (*)	code material no.	RG12A2010530100 R930003374
Fluids		Mineral-based or synthetics with lubricating properties at viscosities of 10 to 500 mm ² /s (cSt)
Filtration		Nominal value max. 10µm (NAS 8) ISO 4406 19/17/14
Installation		No restrictions
Other Technical Data		See data sheet RE 18350-50

(*) Only external seals for 10 valves

Dimensions



Ordering code

OD.21.01		X	89	00	*	Series 0/A to L unchanged performances and dimensions
Flow control valve, cartridge restrictor					Version and options standard	
Adjustments					Common cavity, Size 12	
= 03 Leakproof hex. socket screw						
= 04 Handknob and locknut						

Type	Material number
OD210103890000	R901109832
OD210104890000	R901109834

Type	Material number