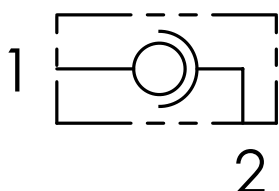


| | | |
|-------------------------------------|-------------|----|
| Codice ordinazione Ordering code | 01 | 02 |
| | GG90 | |

| 01 | Giunti girevoli a 90° (90° rotating couplings) | | GG90 |
|----|--|----------|------|
| 02 | Dimensione (Size) | BSPP 1/4 | 140 |
| | | BSPP 3/8 | 380 |
| | | BSPP 1/2 | 120 |
| | | BSPP 3/4 | 340 |
| | | BSPP 1 | 100 |

Schema idraulico - Hydraulic circuit



Dati tecnici - Technical data

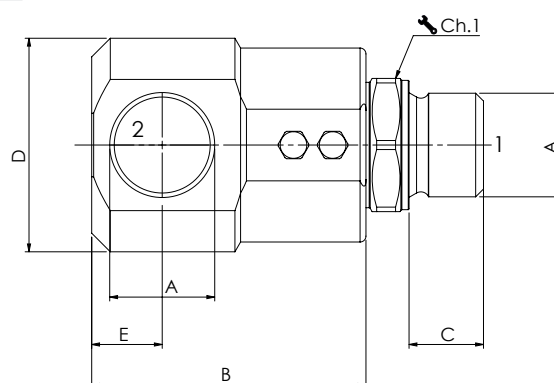
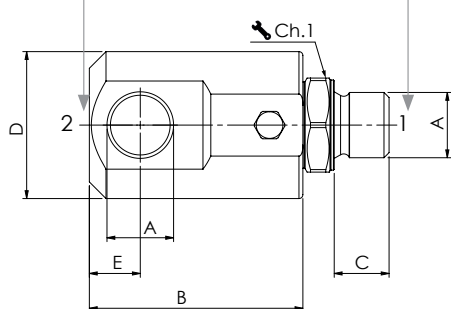
| | | |
|--|-------------------------------|--------------|
| Olío idraulico/Mineral oil | ISO 6743/4 (DIN 51524) | |
| Viscosità olio/Oil viscosity | 15-250 mm²/s (15 to 250 cSt) | |
| Classe di contaminazione max con filtro Max contamination index with filter | ISO 4406:1999 Classe 19/17/14 | |
| Temperatura dell'olio/Oil temperature | -20°C +80°C | -4°F + 176°F |
| Temperatura ambiente/Ambient temperature | -20°C +50°C | -4°F + 122°F |
| È indispensabile l'utilizzo di un filtro per proteggere la valvola (filtrazione consigliata 15 µm) It is necessary a filter use to protect the valve (advised filtration 15 µm) | | |

Coppie di serraggio raccordo Tightening torques for stud

| ② | Nm |
|----------|-----|
| BSPP 1/4 | 40 |
| BSPP 3/8 | 90 |
| BSPP 1/2 | 120 |
| BSPP 3/4 | 210 |
| BSPP 1 | 370 |

Coppie di serraggio femmina girevole 60° 60° female swivel ends tightening torque values

| ① | Nm |
|----------|-----|
| BSPP 1/4 | 20 |
| BSPP 3/8 | 35 |
| BSPP 1/2 | 60 |
| BSPP 3/4 | 115 |
| BSPP 1 | 140 |



Caratteristiche tecniche - Technical characteristics

| Tipo Type | A | Portata max Max flow l/min-USgpm | Pressione max Max pressure bar/PSI | Pressione max in rotazione Max rotation pressure bar/PSI | Velocità max di rotazione Max rotation speed rev/min | B | C | D | E | L | Ch. 1 | Peso approssimativo Approx weight kg/lb |
|--------------|----------|--|--|--|--|-----------|-----------|-------------|-----------|------------|-------|---|
| GG90140 | BSPP 1/4 | 25 (6.6) | 400 (5800) | 200 (2900) | 212 | 50 (1.97) | 11 (0.43) | 33,5 (1.32) | 11 (0.43) | 69 (2.71) | 19 | 0,31 (0.68) |
| GG90380 | BSPP 3/8 | 35 (9.2) | | | 173 | 54 (2.13) | 14 (0.55) | 37,5 (1.48) | 13 (0.51) | 76 (2.99) | 24 | 0,41 (0.90) |
| GG90120 | BSPP 1/2 | 60 (15.8) | 300 (4350) | 150 (2175) | 160 | 63 (2.48) | 15 (0.59) | 39,5 (1.56) | 14 (0.55) | 87 (3.43) | 27 | 0,52 (1.15) |
| GG90340 | BSPP 3/4 | 100 (26.4) | | | 120 | 70 (2.76) | 19 (0.75) | 54,5 (2.15) | 18 (0.71) | 100 (3.94) | 34 | 0,96 (2.11) |
| GG90100 | BSPP 1 | 180 (47.5) | | | 100 | 80 (3.15) | 21 (0.83) | 59 (2.32) | 25 (0.98) | 113 (4.45) | 41 | 1,25 (2.75) |