

## THINLED 1

COMPACT & POWERFUL LIGHTING

▶ LED LIGHTING SYSTEM ▶ HIGH POWERFUL SPOT LIGHTING ▶ COMPACT LIGHT ▶ CONFINED ENVIRONMENT ▶ QUALITY CONTROL WITH CAMERA

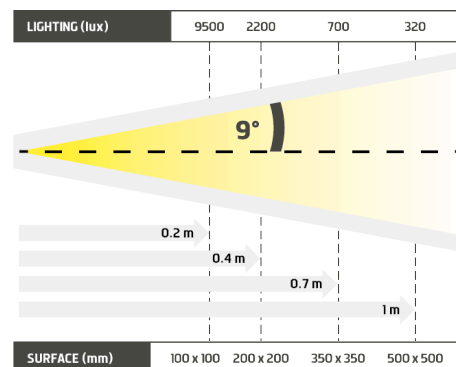
ALL THE LED LIGHTING **POWER**  
ADJUSTED TO **CONFINED ENVIRONMENTS**.



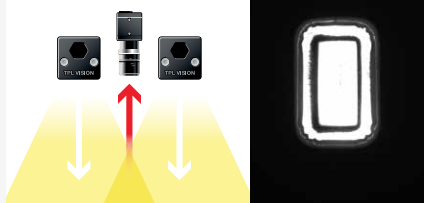
- ✓ Powerful and compact,
- ✓ easy to use,
- ✓ made for confined spaces.

The ThinLED 1 is a miniature spot that provides an incredible lighting, considering its size. Its global shape enables an easy set up. The ThinLED 1 is particularly recommended for controls in small spaces. It can be seriously considered as a competitive alternative to lighting fibre optic : its high powerful led fits the highest production rates. The ThinLED 1 is obviously the key lighting for industrial vision in confined spaces.

Distance	0.2m		0.4m		0.7m		1m	
ThinLED1-WHI	9500 lux	100 x 100 mm	2200 lux	200 x 200 mm	700 lux	350 x 350 mm	320 lux	500 x 500 mm
Minimum guaranteed values (white lighting measures)								



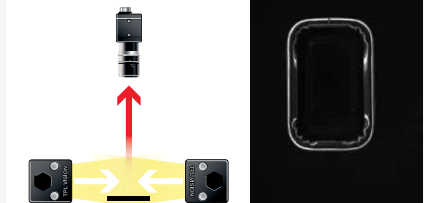
## DIRECT LIGHTING



## DIRECT INCLINED LIGHTING



## DARKFIELD LIGHTING



## TECHNICAL SPECIFICATIONS

Electronics	
Maximum current	350mA Use a current control power supply
Wiring	M8 3 poles female connector
Maximum power	8.5W
Optics	
Colour	White, Red, Green, Blue
Number of Leds	1
Lens	$\pm 9^\circ$
Mechanics	
Dimensions	23 x 20 x 13 mm
Weight	27.4 g
Materials	Black anodized aluminum
Fixing	2 holes for screw CHC M3 (not supplied)
Environment	
Operating temperature	0 - 40°C
Storage temperature	0 - 60°C
IP protection	IP 40
Labels	RoHS-CE-WEEE

## ACCESSORIES

### M8 female – 3 pins cable



2 meters	Ref: C-M8-3P-2M
5 meters	Ref: C-M8-3P-5M
10 meters	Ref: C-M8-3P-10M

### Diffusers & Polarizer



Ref: THLACCSP1

## HOW TO BUILD YOUR REFERENCE

REQUIRED SETTINGS

THINLED1

COLOUR

WHI

630

525

470

OPTIC ANGLE

9

$\pm 9^\circ$

EXAMPLES :

THINLED1 WHITE LED  $\pm 9^\circ$  :

THINLED1 RED LED  $\pm 9^\circ$  :

THINLED1 BLUE LED  $\pm 9^\circ$  :

RESULTS :

THINLED1-WHI-9

THINLED1-630-9

THINLED1-470-9