

DNG 7-60

3-phasig

max 2300 m³/h

max 1255 Pa

Volumenstrom / performance of air
Druckdifferenz ΔP_{fa} / pressure ΔP_{fa}

Motor-Nennleistung / power out

1500 W

Nennspannung / voltage

Δ/Y 230/400 V

Nennstrom / current

5,9/3,4 A

Nennzahl / speed

2840 min⁻¹

Frequenz / frequency

50 Hz

Schutzart IP / protection mode IP

55

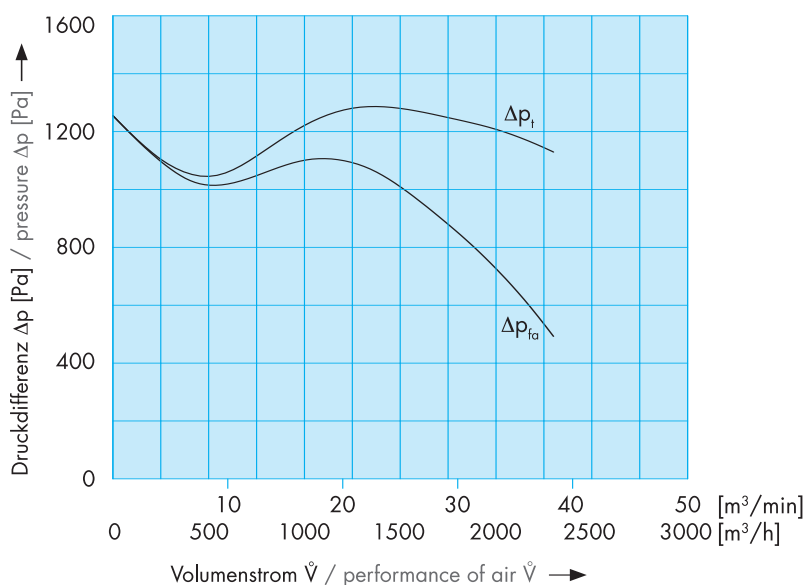
Schalldruckpegel / noise level

81 dB (A)

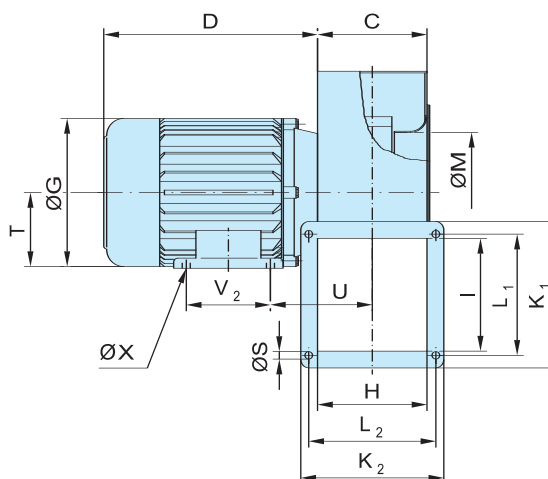
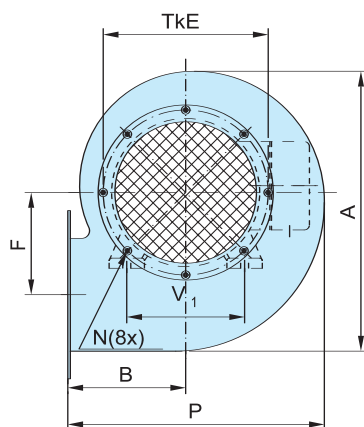
Gewicht / weight

ca. 26,5 kg

ATEX-Ausführung,
siehe Rückseite
ATEX-Design,
see next page



Abmessungen / Measurements



A	333
B	140
C	130
D	254
E	212
F	121,5
G	178
H	125
I	130
K ₁	174
K ₂	170
L ₁	144
L ₂	151
M	161
N	M5
P	305
S	9
T	90
U	121
V ₁	140
V ₂	100
X	9,5

NIEDERDRUCK Ventilator 2-polig

LOW-PRESSURE Fan 2-pole



ATEX-Ausführung / ATEX-Design II 2 G c T3

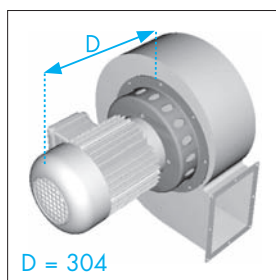
DNG 7-60

3-phasig

Temperaturklasse / temperature class	T3
Motor-Nennleistung / power out	1500 W
Nennspannung / voltage	Δ/Y 230/400 V
Nennstrom / current	5,74/3,3 A
Nenndrehzahl / speed	2860 min ⁻¹
Frequenz / frequency	50 Hz
Schutzart IP / protection mode IP	55
Schalldruckpegel / noise level	81 dB (A)
Gewicht / weight	ca. 20,5 kg

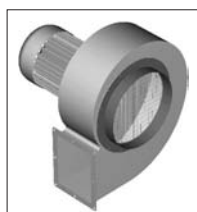


Zubehör (Abmessungen ab Seite 367) / Accessories (Measurements from page 367)

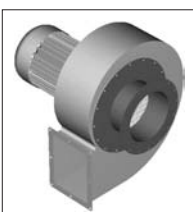


Temperatursperre
temperature guard

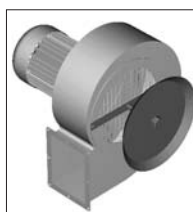
(Beschreibung siehe Seite 359)
(Description see page 359)



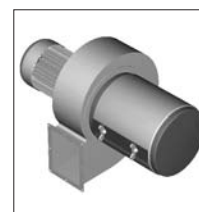
Ansaugstutzen
intake connection



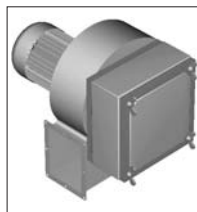
Ansaugzwischenflansch
connecting flange



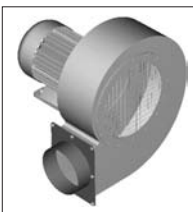
Ansaugdrossel
intake throttle



Ansaugrundfilter
intake filter-round



Ansaugkastenfilter
intake filterbox



Ausblasstutzen
exhaust connection



Frequenzumrichter
frequency converter