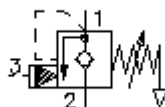


counterbalance valve, screw-in valve (adjustable) vented CBPG-10.-.-0-..

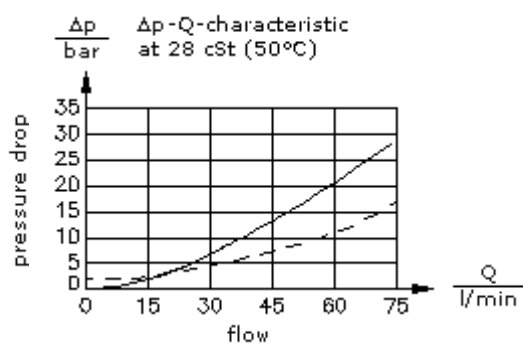
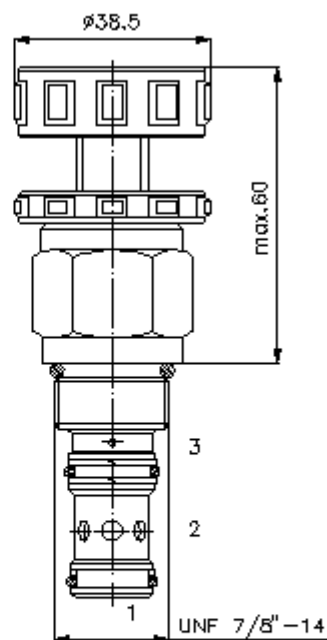
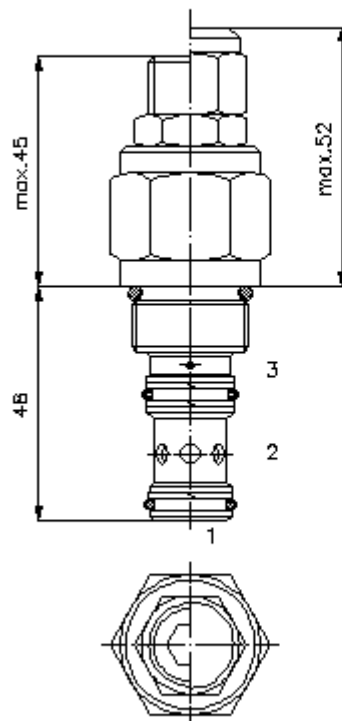


HEX 19 mm

HEX 27 mm
(torque
cartridge:
48 - 54 Nm)

cavity:
C-10-3S
see
data-sheet no.:
[IK-200-109-00](#)

HEW 8 mm



**counterbalance valve, screw-in
valve (adjustable) vented**
CBPG-10.-.-0-..

Ordering example:

CBPG - 10N - C - 0 - 30

A	B	C	D	E

Model code:

A

design

counter balance valve
adjustable
pilot ratio 4 : 1
vented spring

B

size and sealing

10N = Buna (NBR)
10V = Viton (FPM)

C

adjustment

S = screw adjustment
C = cap
K = handknob

D

construction

0 = screw-in valve

E

pressure range

15 = 3.4 - 105 bar
30 = 6.9 - 210 bar
50 = 10.3 - 350 bar