

ETRI®

DC Axial Fans

Series
354D

S, X, Z
speeds

Ø 6,77" x 1,968"

Ø 172 x 50 mm

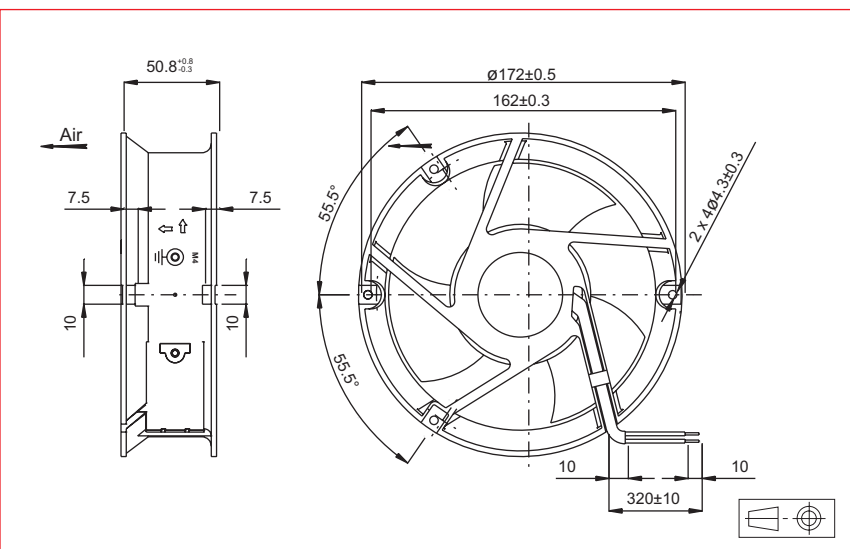


Approvals



Life expectancy

L-10 LIFE AT 40°C:
80 000 hours

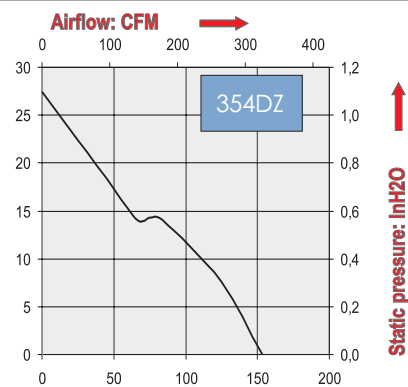
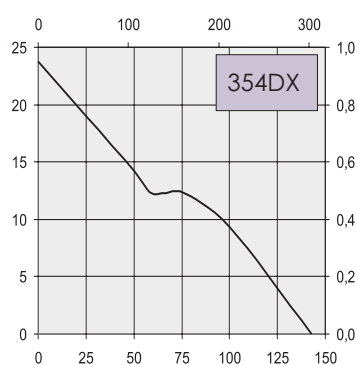
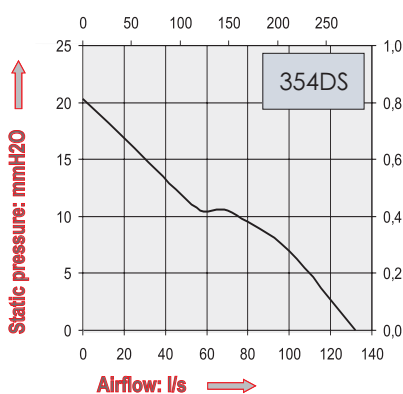


Brushless DC Motor

Electrical protection: integrated circuit
Housing material: aluminium
Impeller material: plastic UL 94 V0
Maximum weight: 840 g
Bearing system: ball bearings
Connection: flying leads
IP 20

Available with:

- Speed sensor
- Alarm
- IP 54 / IP 55



Part Number	Nominal voltage	Airflow	Noise level	Nominal speed	Input Power	Voltage range	Operating temperature	
	V	l/s	dB(A)	RPM	W	V	Min.°C	Max.°C
354DS1LM11000	12	132,0	57,5	3700	25,3	(8-14)	-10	70
354DS2LM11000	24	132,0	57,5	3700	20,4	(12-28)	-10	70
354DS4LM11000	48	132,0	57,5	3700	23,5	(24-56)	-10	70
354DX2LM11000	24	142,7	60	4000	26,4	(12-28)	-10	70
354DX4LM11000	48	142,7	60	4000	30,7	(24-56)	-10	70
354DZ2LM11000	24	153,3	63	4300	32,9	(12-28)	-10	70

Additional versions:

Lower speeds (Refer to page 32)