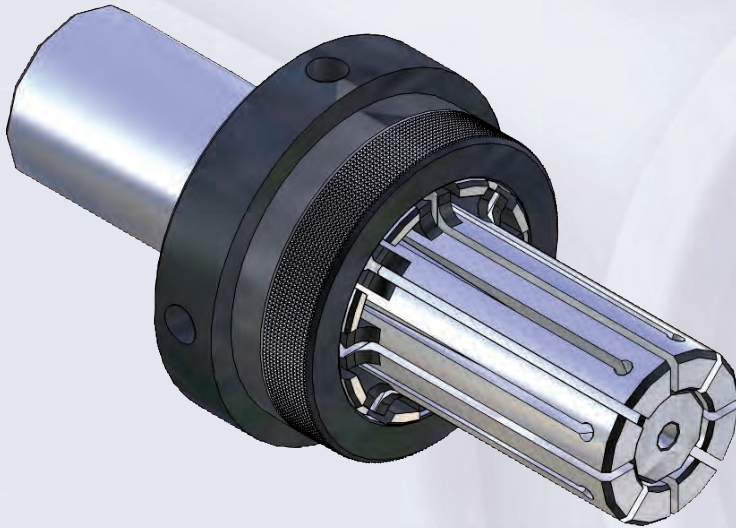


Hand-operated by cartridge mandrel with center hole, for internal clamping



### Application:

Turning, grinding, measuring.

### Special features:

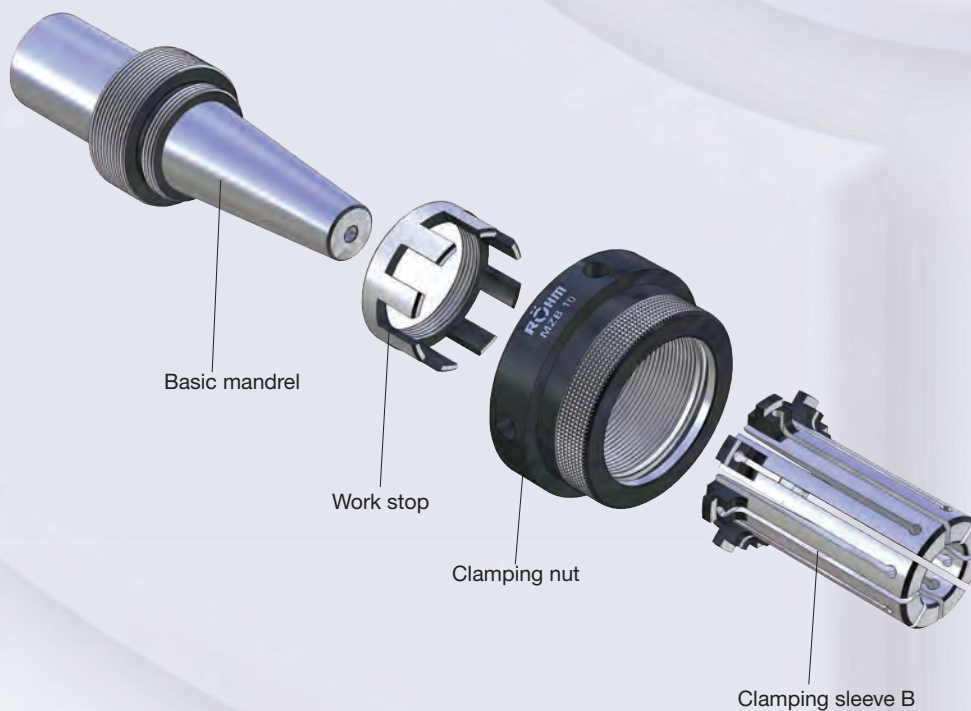
For a very small clamping diameter from Ø5,5mm, steady clamping by axial draw-in. The draw-in of the work-pieces against the rigid work-stop takes place independently via the operation of the mandrels. Quick change of the taper sleeves possible, for short span length.

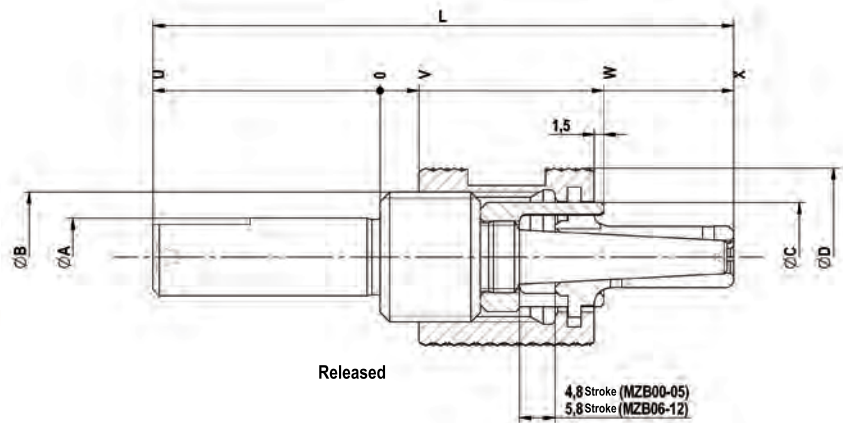
### Technical features:

- High axial- and radial accuracy,
- High repeating accuracy,
- Hardened low-wear construction,
- High accuracy by guiding the sleeves on the clamping mandrel,
- Hand-operated.

### Customer advantage:

Little weight and little height by compact design, for small clamping diameters and for short span length.



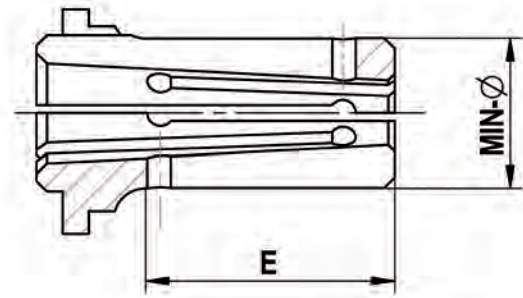
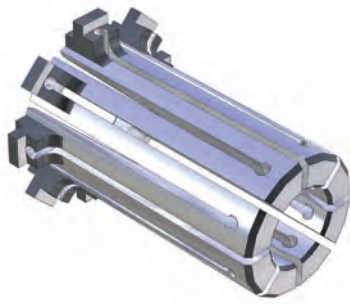


Tool group C18

Type 241-00 **MZB** Cartridge Mandrel; **hand-operated with centre hole**; for internal clamping

	MZB 00	MZB 01	MZB 02	MZB 03	MZB 04	MZB 05	MZB 06	MZB 07	MZB 08	MZB 09	MZB 10	MZB 11	MZB 12
<b>Cartridge Mandrel</b>	1130361 ●	1130362 ●	1130363 ●	1130364 ●	1130365 ●	1130366 ●	1130367 ●	1130368 ●	1130369 ●	1130370 ●	1130371 ●	1130372 ●	1130373 ●
<b>Basic mandrel</b>	315100 ●	315101 ●	315102 ●	315103 ●	315104 ●	315105 ●	315106 ●	315107 ●	315108 ●	315109 ●	315110 ●	315111 ●	315112 ●
<b>Nut</b>	315113 ●	315114 ●	315115 ●	315116 ●	315117 ●	315118 ●	315119 ●	315120 ●	315121 ●	315122 ●	315123 ●	315124 ●	315125 ●
Min-Ø unclamped from	5,5	7,5	9,5	12	14,5	19,5	24,7	29,7	34,7	39,7	44,7	54,7	64,7
Min-Ø unclamped to	7	9	11,5	14,5	19	24,5	28,7	33,7	38,7	43,7	53,7	63,7	78,7
Clamping-Ø max,	7,5	9,5	12	15	19,5	25	29,7	34,7	39,7	44,7	54,7	64,7	79,7
Ø A h6	10	12	12	14	18	20	25	30	40	40	45	50	50
Ø B	M14x1,5	M16x1,5	M20x1,5	M24x1,5	M30x1,5	M36x1,5	M42x1,5	M45x1,5	M52x1,5	M56x1,5	M65x1,5	M75x2	M95x2
Ø C	10,8	13	16,8	20,8	26,8	31,8	36,8	41,8	47,8	52,5	61,8	71,8	90,8
Ø D	19,5	23	28	31	38	47	54	57,5	66	74	83	93	108
Stroke G	5	5,5	5,5	5,5	5,5	6	6	6	6	6	6	6,5	7
L	74,5	79,5	89,5	97,5	102,5	113,5	136	144,5	156	166,5	197	208,5	221,5
U	30	30	35	35	35	40	45	50	55	60	67	67	67
V	5,5	6	6	6	6	6	7	7	7	7	7	7	7
W	29	33,5	34,5	36,5	37,5	37,5	48,5	48,5	48,5	48,5	53,5	56,5	58,5
X	44,5	48,5	53,5	61,5	66,5	72,5	89	92,5	99	104,5	128	139,5	152,5

# Accessories MZB

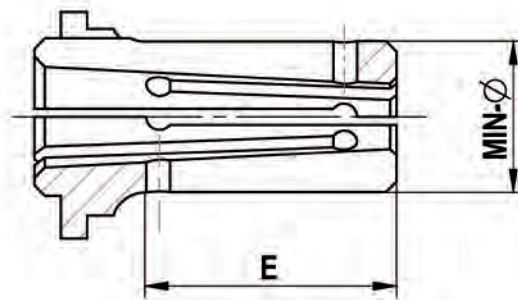
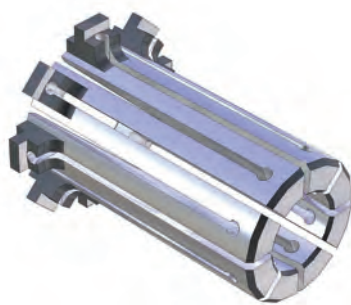


Tool group A 18

Type 241-50 Clamping sleeve Type B - Standard design; (not vulcanized)

For size	MZB 00	MZB 01	MZB 02	MZB 03	MZB 04	MZB 05	MZB 06	MZB 07	MZB 08	MZB 09	MZB 10	MZB 11	MZB 12
Expansion in Ø	0,5	0,5	0,5	0,5	0,5	0,5	1	1	1	1	1	1	1
Total length	11,5	15	19	20,5	28,5	34	40	43,5	50	55,5	74	82,5	93,5
Min-Ø	5,5	7,5	10	12	14,5	19,5	24,7	29,7	34,7	39,7	44,7	54,7	64,7
Clamping sleeve	315139 ●	315140 ●	315154 ●	315142 ●	315143 ●	315144 ●	315145 ●	315146 ●	315147 ▲	315148 ▲	315149 ▲	315150 ▲	315151 ▲
Work stop	315126 ●	315127 ●	315128 ●	315129 ●	315130 ●	315131 ●	315132 ●	315133 ●	315134 ●	315135 ●	315136 ●	315137 ●	315138 ●
Min-Ø	6	8	10,5	12,5	15	20	25,7	30,7	35,7	40,7	45,7	55,7	65,7
Clamping sleeve	315152 ●	315153 ●	315167 ●	315155 ●	315156 ●	315157 ●	315158 ●	315159 ●	315160 ▲	315161 ▲	315162 ▲	315163 ▲	315164 ▲
Work stop	315126 ●	315127 ●	315128 ●	315129 ●	315130 ●	315131 ●	315132 ●	315133 ●	315134 ●	315135 ●	315136 ●	315137 ●	315138 ●
Min-Ø	6,5	8,5	11	13	15,5	20,5	26,7	31,7	36,7	41,7	46,7	56,7	66,7
Clamping sleeve	315165 ●	315166 ●	315180 ●	315168 ●	315169 ●	315170 ●	315171 ●	315172 ●	315173 ▲	315174 ▲	315175 ▲	315176 ▲	315177 ▲
Work stop	315126 ●	315127 ●	315128 ●	315129 ●	315130 ●	315131 ●	315132 ●	315133 ●	315134 ●	315135 ●	315136 ●	315137 ●	315138 ●
Min-Ø	7	9	11,5	13,5	16	21	27,7	32,7	37,7	42,7	47,7	57,7	67,7
Clamping sleeve	315178 ●	315179 ●	315191 ●	315181 ●	315182 ●	315183 ●	315184 ●	315185 ●	315186 ▲	315187 ▲	315188 ▲	315189 ▲	315190 ▲
Work stop	315126 ●	315127 ●	315128 ●	315129 ●	315130 ●	315131 ●	315132 ●	315133 ●	315134 ●	315135 ●	315136 ●	315137 ●	315138 ●
Min-Ø			9,5	14	16,5	21,5	28,7	33,7	38,7	43,7	48,7	58,7	68,7
Clamping sleeve			315141 ●	315192 ●	315193 ●	315194 ●	315195 ●	315196 ●	315197 ▲	315198 ▲	315199 ▲	315200 ▲	315201 ▲
Work stop			315128 ●	315129 ●	315130 ●	315131 ●	315132 ●	315133 ●	315134 ●	315135 ●	315136 ●	315137 ●	315138 ●
Min-Ø				14,5	17	22					49,7	59,7	69,7
Clamping sleeve				315202 ●	315203 ●	315204 ●					315205 ▲	315206 ▲	315207 ▲
Work stop				315129 ●	315130 ●	315131 ●					315136 ●	315137 ●	315138 ●
Min-Ø					17,5	22,5					50,7	60,7	70,7
Clamping sleeve					315209 ●	315210 ●					315211 ▲	315212 ▲	315213 ▲
Work stop					315130 ●	315131 ●					315136 ●	315137 ●	315138 ●
Min-Ø					18	23					51,7	61,7	71,7
Clamping sleeve					315215 ●	315216 ●					315217 ▲	315218 ▲	315219 ▲
Work stop					315130 ●	315131 ●					315136 ●	315137 ●	315138 ●
Min-Ø					18,5	23,5					52,7	62,7	72,7
Clamping sleeve					315221 ●	315222 ●					315223 ▲	315224 ▲	315225 ▲
Work stop					315130 ●	315131 ●					315136 ●	315137 ●	315138 ●
Min-Ø					19	24					53,7	63,7	73,7
Clamping sleeve					315227 ●	315228 ●					315229 ▲	315230 ▲	315231 ▲
Work stop					315130 ●	315131 ●					315136 ●	315137 ●	315138 ●
Min-Ø						24,5							74,7
Clamping sleeve						315233 ●							315208 ▲
Work stop						315131 ●							315138 ●
Min-Ø													75,7
Clamping sleeve													315214 ▲
Work stop													315138 ●
Min-Ø													76,7
Clamping sleeve													315220 ▲
Work stop													315138 ●
Min-Ø													77,7
Clamping sleeve													315226 ▲
Work stop													315138 ●
Min-Ø													78,7
Clamping sleeve													315232 ▲
Work stop													315138 ●

# Accessories MZB



Tool group A 18

Type 241-55 **Clamping sleeve** Type B - **vulcanized** (protected against chips and dirt)

For size	MZB 00	MZB 01	MZB 02	MZB 03	MZB 04	MZB 05	MZB 06	MZB 07	MZB 08	MZB 09	MZB 10	MZB 11	MZB 12
Expansion in Ø	0,5	0,5	0,5	0,5	0,5	0,5	1	1	1	1	1	1	1
Total length	11,5	15	19	20,5	28,5	34	40	43,5	50	55,5	74	82,5	93,5
Min-Ø	5,5	7,5	10	12	14,5	19,5	24,7	29,7	34,7	39,7	44,7	54,7	64,7
<b>Clamping sleeve</b>	<b>323739</b> ●	<b>323740</b> ●	<b>323754</b> ●	<b>323742</b> ●	<b>323743</b> ●	<b>323744</b> ●	<b>323745</b> ●	<b>323746</b> ●	<b>323747</b> ●	<b>323748</b> ●	<b>323749</b> ●	<b>323750</b> ●	<b>323751</b> ●
Work stop	315126 ●	315127 ●	315128 ●	315129 ●	315130 ●	315131 ●	315132 ●	315133 ●	315134 ●	315135 ●	315136 ●	315137 ●	315138 ●
Min-Ø	6	8	10,5	12,5	15	20	25,7	30,7	35,7	40,7	45,7	55,7	65,7
<b>Clamping sleeve</b>	<b>323752</b> ●	<b>323753</b> ●	<b>323767</b> ●	<b>323755</b> ●	<b>323756</b> ●	<b>323757</b> ●	<b>323758</b> ●	<b>323759</b> ●	<b>323760</b> ●	<b>323761</b> ●	<b>323762</b> ●	<b>323763</b> ●	<b>323764</b> ●
Work stop	315126 ●	315127 ●	315128 ●	315129 ●	315130 ●	315131 ●	315132 ●	315133 ●	315134 ●	315135 ●	315136 ●	315137 ●	315138 ●
Min-Ø	6,5	8,5	11	13	15,5	20,5	26,7	31,7	36,7	41,7	46,7	56,7	66,7
<b>Clamping sleeve</b>	<b>323765</b> ●	<b>323766</b> ●	<b>323780</b> ●	<b>323768</b> ●	<b>323769</b> ●	<b>323770</b> ●	<b>323771</b> ●	<b>323772</b> ●	<b>323773</b> ●	<b>323774</b> ●	<b>323775</b> ●	<b>323776</b> ●	<b>323777</b> ●
Work stop	315126 ●	315127 ●	315128 ●	315129 ●	315130 ●	315131 ●	315132 ●	315133 ●	315134 ●	315135 ●	315136 ●	315137 ●	315138 ●
Min-Ø	7	9	11,5	13,5	16	21	27,7	32,7	37,7	42,7	47,7	57,7	67,7
<b>Clamping sleeve</b>	<b>323778</b> ●	<b>323779</b> ●	<b>323791</b> ●	<b>323781</b> ●	<b>323782</b> ●	<b>323783</b> ●	<b>323784</b> ●	<b>323785</b> ●	<b>323786</b> ●	<b>323787</b> ●	<b>323788</b> ●	<b>323789</b> ●	<b>323790</b> ●
Work stop	315126 ●	315127 ●	315128 ●	315129 ●	315130 ●	315131 ●	315132 ●	315133 ●	315134 ●	315135 ●	315136 ●	315137 ●	315138 ●
Min-Ø			9,5	14	16,5	21,5	28,7	33,7	38,7	43,7	48,7	58,7	68,7
<b>Clamping sleeve</b>			<b>323741</b> ●	<b>323792</b> ●	<b>323793</b> ●	<b>323794</b> ●	<b>323795</b> ●	<b>323796</b> ●	<b>323797</b> ●	<b>323798</b> ●	<b>323799</b> ●	<b>323800</b> ●	<b>323801</b> ●
Work stop			315128 ●	315129 ●	315130 ●	315131 ●	315132 ●	315133 ●	315134 ●	315135 ●	315136 ●	315137 ●	315138 ●
Min-Ø				14,5	17	22					49,7	59,7	69,7
<b>Clamping sleeve</b>				<b>323802</b> ●	<b>323803</b> ●	<b>323804</b> ●					<b>323805</b> ●	<b>323806</b> ●	<b>323807</b> ●
Work stop				315129 ●	315130 ●	315131 ●					315136 ●	315137 ●	315138 ●
Min-Ø					17,5	22,5					50,7	60,7	70,7
<b>Clamping sleeve</b>					<b>323809</b> ●	<b>323810</b> ●					<b>323811</b> ●	<b>323812</b> ●	<b>323813</b> ●
Work stop					315130 ●	315131 ●					315136 ●	315137 ●	315138 ●
Min-Ø					18	23					51,7	61,7	71,7
<b>Clamping sleeve</b>					<b>323815</b> ●	<b>323816</b> ●					<b>323817</b> ●	<b>323818</b> ●	<b>323819</b> ●
Work stop					315130 ●	315131 ●					315136 ●	315137 ●	315138 ●
Min-Ø					18,5	23,5					52,7	62,7	72,7
<b>Clamping sleeve</b>					<b>323821</b> ●	<b>323822</b> ●					<b>323823</b> ●	<b>323824</b> ●	<b>323825</b> ●
Work stop					315130 ●	315131 ●					315136 ●	315137 ●	315138 ●
Min-Ø					19	24					53,7	63,7	73,7
<b>Clamping sleeve</b>					<b>323827</b> ●	<b>323828</b> ●					<b>323829</b> ●	<b>323830</b> ●	<b>323831</b> ●
Work stop					315130 ●	315131 ●					315136 ●	315137 ●	315138 ●
Min-Ø						24,5							74,7
<b>Clamping sleeve</b>						<b>323833</b> ●							<b>323808</b> ●
Work stop						315131 ●							315138 ●
Min-Ø													75,7
<b>Clamping sleeve</b>													<b>323814</b> ●
Work stop													315138 ●
Min-Ø													76,7
<b>Clamping sleeve</b>													<b>323820</b> ●
Work stop													315138 ●
Min-Ø													77,7
<b>Clamping sleeve</b>													<b>323826</b> ●
Work stop													315138 ●
Min-Ø													78,7
<b>Clamping sleeve</b>													<b>323832</b> ●
Work stop													315138 ●

Different chucking Ø and profiled clamping sleeves can be supplied on request