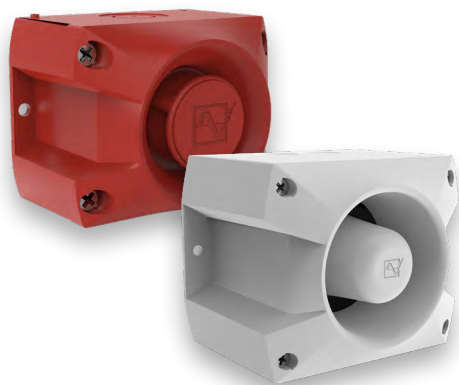


PATROL SOUNDERS 105/107 dB(A)

PA 1 / PA 5



PATROL – the new generation of sounders.
Three dimensional innovation.

- Safe; an incorrect installation is virtually impossible.
- Easy; significantly shorter assembly and installation times.
- Economical; extremely high efficiency and good penetration of acoustical obstacles significantly reduce the required number of sounders.



protection system



impact-proof housing



operating temperature



acoustic penetration



external tone selection



inrush current limitation



24-48 V DC



24-48 V DC



warranty

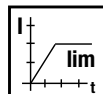


connector (option)

PRODUCT	PA 1				PA 5			
DATA								
Operating range	195–253 V	95-127 V	18-30 V	10-57 V	195-253 V	95-127 V	18-30 V	10-57 V
	AC 50 60		AC	DC	AC 50 60		AC	DC
Nominal current consumption ¹ (max)	16 mA	30 mA	150 mA	80 mA	16 mA	30 mA	150 mA	80 mA
Sound pressure level	105 dB(A)				107 dB(A)			
Sound pressure level @DIN-tone	104 dB(A)				105 dB(A)			
Sound level reduction	max. –12 dB via potentiometer							
Alarm tones	80 thereof 4 tones are externally selectable							
Operating temperature	–40 °C ... +55 °C							
Storage temperature	–40 °C ... +70 °C							
Relative humidity	90 %							
Protection system according to EN 6052	IP 66 (EN 60529), NEMA Type 4 & 4x							
Protection class	II							
Duty cycle	100 %							
Material	PC / ABS blend similar to RAL 3000 (flame red) RAL 7035 (light grey) RAL 9003 (signal white)							
Cable entry	3x M20 knock-outs on side, 1 knock-out on back				5x M20 knock-outs on side, 1 knock-out on back			
Integrated seal with cable entry	7-13 mm (Feed-through grommet)							
Connecting terminals	0.14 - 2.5mm ² fine stranded / AWG24 - AWG 14							
Weight	405 g		270 g		778 g		643 g	

¹ Power consumption dependent on operating voltage.

OPTIONS/ACCESSORIES

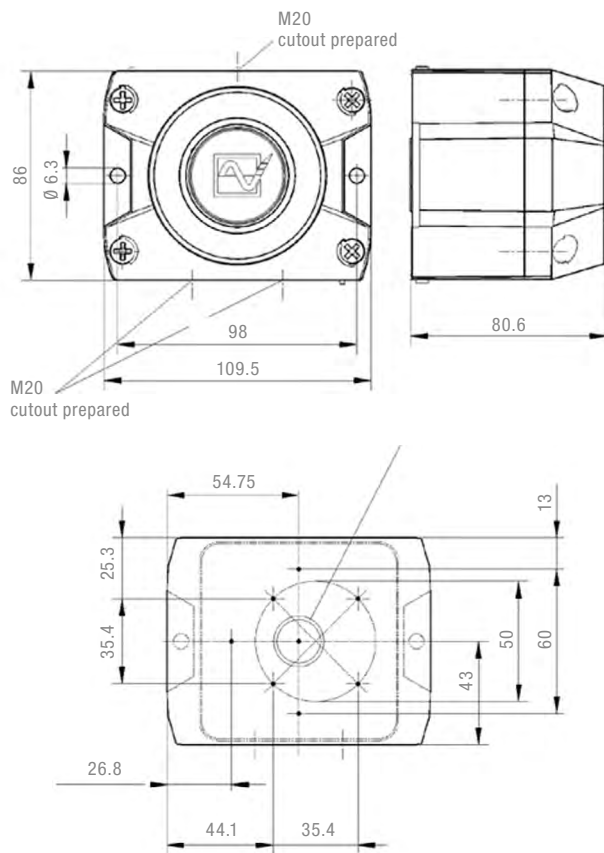


inrush current limitation

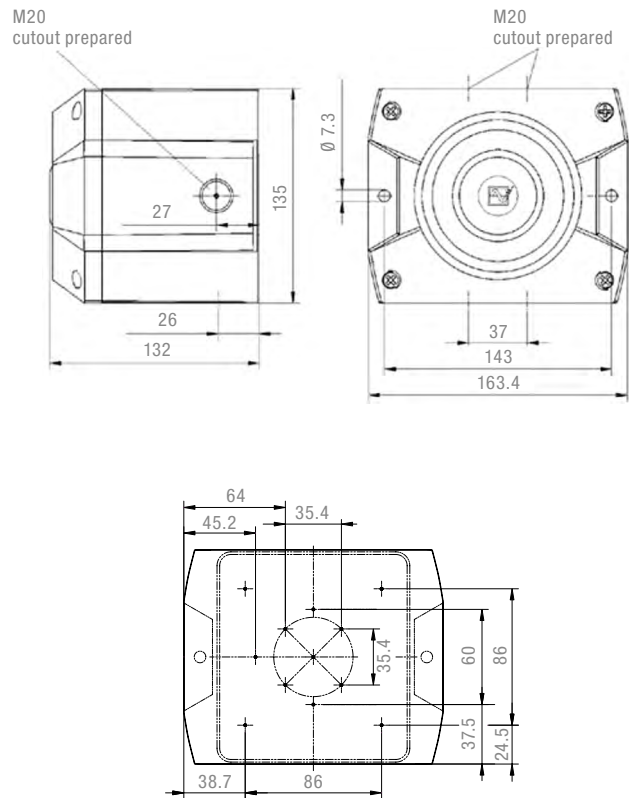


DIMENSIONS

PA 1



PA 5



ARTICLE NO.		PA 1			PA 5		
VERSION		230 V AC	115 V AC	10-57 V DC	230 V AC	115 V AC	10-57 V DC
Standard	housing red	23310100000	23310150000	23310630000	23350100000	23350150000	23350630000
DNV/MED	housing red	23310100001	23310150001	23310630001	23350100001	23350150001	23350630001
Standard	housing grey	23310100055	23310150055	23310630055	23350100055	23350150055	23350630055
DNV/MED	housing grey	23310100056	23310150056	23310630056	23350100056	23350150056	23350630056

Article numbers for other voltages and versions on request.

ARTICLE NO.		PA 1	PA 5
Gehäuseverbinder	For connection (daisy-chaining) of several sounders of the PATROL series.	28300000003	28300000003
Flächendichtung	Sealing of the sounder installation surface when, e. g. cable entry is executed from the back.	28300000004	28300000005
Plombierstopfen (4er Pack)	Anti-tamper sealing for fasteners of the PATROL devices after installation in order to prevent manipulation of the devices.	28300000002	28300000002
Schalttafeleinbaukit PATROL	The PATROL devices are also suitable for panel mounting. This kit consists of a plug connector for the electrical contact, as well as all installation materials.	28300000007	28300000007
Replacement locking bolts, pack of 4		28912000000	28912000000

TONE TABLE									
NO.	DESCRIPTION				NO.	DESCRIPTION			
1	no tone				57	Continuous tone, UK BS5839-1		950 Hz	
2	Sawtooth, DIN tone 33404-3 Germany (emergency signal), PFEER PTAP		1200 Hz		59	Continuous tone		880 Hz	
9	Slow whoop, fire alarm, UK BS5839-1		970 Hz		60	Continuous tone		825 Hz	
11	Interrupted tone (fast)		800 Hz		61	Continuous tone		800 Hz	
13	Interrupted tone		970 Hz		63	Continuous tone		725 Hz	
15	Slow whoop, evacuation alarm Netherlands NEN 2575		800 Hz		65	Continuous tone, Sweden SS031711 (all-clear signal)		660 Hz	
16	Slow whoop, evacuation alarm Australia AS2220		900 Hz		66	Continuous tone		554 Hz	
18	Slow whoop, NFPA		700 Hz		67	Continuous tone, Germany KTA3901 (all-clear signal)		500 Hz	
22	Pulsating tone, Australien alert AS1670, ISO8201		1200 Hz		68	Continuous tone		470 Hz	
23	Siren		500 Hz		69	Continuous tone		440 Hz	
24	Siren		775 Hz		71	Continuous tone		340 Hz	
25	Siren		422 Hz		77	Interrupted tone		2200 Hz	
26	Siren, industrial alarm Germany		1200 Hz		82	Interrupted tone, PFEER (general alarm), UK BS5839-1 (back-up alarm)		1000 Hz	
27	Sweeping		2400 Hz		83	Interrupted tone, PFEER (general alarm)		1000 Hz	
29	Sweeping (fast)		500 Hz		88	Interrupted tone		950 Hz	
30	Sweeping		1200 Hz		90	Interrupted tone		825 Hz	
31	Sweeping, France NFC48-265		800 Hz		91	Interrupted tone		800 Hz	
33	Sweeping (medium), UK BS5839-1		1000 Hz		92	Interrupted tone		800 Hz	
34	Sweeping (fast)		2900 Hz		93	Interrupted tone (fast), Horn		800 Hz	
35	Sweeping (fast), UK BS5839-1		2400 Hz		97	Interrupted tone		725 Hz	
36	Sweeping		2900 Hz		98	Interrupted tone, Sweden SS031711 (emergency signal)		700 Hz	
43	Sweeping		1600 Hz		100	Interrupted tone, industrial alarm Germany		680 Hz	
44	Sweeping, IMO 3d, Germany KTA3901 evacuation alarm		1400 Hz		101	Interrupted tone, Sweden SS031711 (important message (pre-mess))		660 Hz	
45	Sweeping		1000 Hz		102	Interrupted tone, Sweden SS031711 (local warning)		660 Hz	
46	Sweeping, general alarm Finland		800 Hz		103	Interrupted tone, Sweden SS031711 (air raid warning)		660 Hz	
52	Continuous tone		1500 Hz		104	Interrupted tone, Sweden SS031711 (emergency signal)		660 Hz	
53	Continuous tone		1200 Hz		107	Interrupted tone, Germany KTA3901 (evacuation alarm)		500 Hz	
54	Continuous tone, Finland (all-clear signal)		500 Hz		109	Interrupted tone, Australia AS2220, AS1610, AS1670		420 Hz	
55	Continuous tone, PFEER gas alarm		1200 Hz		110	Interrupted tone, (fast variable), bell		1450 Hz	
56	Continuous tone		1000 Hz		111	Interrupted tone, ISO8201 (emergency evacuation signal), USA (evacuation alarm)		470 Hz	
					112	Interrupted tone, ISO8201 (emergency evacuation signal)		950 Hz	
					113	Interrupted tone, ISO8201 (emergency evacuation signal), sweeping		2850 Hz	



TONE TABLE

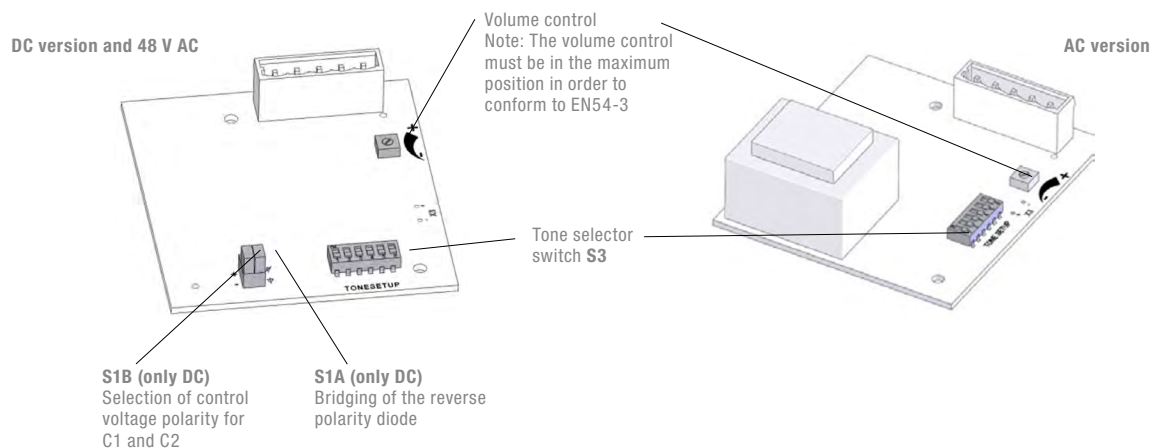
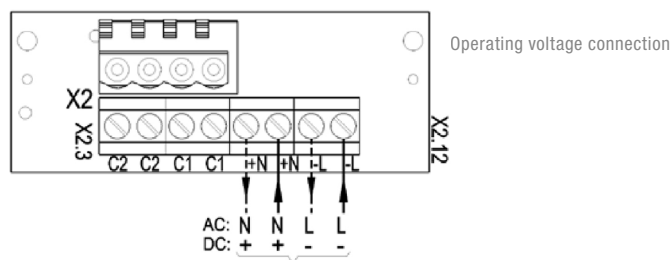
NO.	DESCRIPTION		NO.	DESCRIPTION	
115	Interrupted tone, IMO (telephone call)	950 Hz	131	Alternating tone, UK BS5839-1 (fire alarm, railway crossing)	1000 Hz EN 54-3
116	Interrupted tone, IMO (leave ship)	950 Hz	135	Alternating tone, UK BS5839-1 (fire alarm, increased urgency – railway crossing)	1000 Hz
117	Interrupted tone, IMO SOLAS III/50 + SOLAS III/6.4 (general alarm)	825 Hz	142	Alternating tone	900 Hz
122	Alternating tone	2900 Hz	143	Alternating tone, industrial alarm Germany	660 Hz
123	Alternating tone	2900 Hz	144	Alternating tone	650 Hz
124	Alternating tone, Singapore	2900 Hz	146	Alternating tone, France NFS 32-001 (fire alarm)	554 Hz EN 54-3
125	Alternating tone	1400 Hz	147	Alternating tone, Sweden SS031711	554 Hz
128	Alternating tone	1025 Hz	148	Alternating tone, Sweden SS031711	554 Hz
130	Alternating tone, UK BS5839-1 (fire alarm)	1000 Hz	152	Alternating tone (two tone chime)	800 Hz

CONTROL OF THE TONES

DIP-SWITCH (SETTING OF BASIC TONE)							EXTERNAL TONE SELECTION			DIP-SWITCH (SETTING OF BASIC TONE)							EXTERNAL TONE SELECTION		
1	2	3	4	5	6	BASIC TONE	C1	C2	C1+C2	1	2	3	4	5	6	BASIC TONE	C1	C2	C1+C2
						1		88	57						ON	71	131	52	93
ON						2 *	128	112	57	ON					ON	77	61	52	122
	ON					2	26	100	93		ON				ON	82	131	52	83
ON	ON					2	61	131	112	ON	ON				ON	83	56	2	82
		ON				9	57	11	82			ON			ON	88	2	57	128
ON		ON				15	131	52	112	ON		ON			ON	90	131	52	125
	ON	ON				16	109	52	56		ON	ON			ON	91	30	52	110
ON	ON	ON				18	111	57	68	ON	ON	ON			ON	92	33	52	57
			ON			22	16	109	68				ON		ON	93	2	128	57
ON			ON			23	131	52	112	ON			ON		ON	97	2	63	93
	ON		ON			24	131	52	131		ON		ON		ON	100	131	52	125
ON	ON		ON			25	131	52	92	ON	ON		ON		ON	101	98	102	65
		ON	ON			26	2	100	93			ON	ON		ON	103	131	65	147
ON		ON	ON			27	123	52	92	ON		ON	ON		ON	104	103	65	101
	ON	ON				29	35	52	61		ON	ON	ON		ON	109	16	52	22
ON	ON	ON				30	27	52	77	ON	ON	ON	ON		ON	110	131	61	91
				ON		31	131	52	57					ON	ON	112	2	57	128
ON				ON		33	30	52	35	ON				ON	ON	113	52	123	104
	ON			ON		34	35	52	93		ON			ON	ON	115	117	116	44
ON	ON			ON		35	27	52	110	ON	ON			ON	ON	116	117	93	125
		ON		ON		36	146	67	57			ON		ON	ON	117	93	116	125
ON		ON		ON		43	131	52	91	ON		ON		ON	ON	123	27	52	77
	ON	ON		ON		45	2	57	93		ON	ON		ON	ON	124	53	83	2
ON	ON	ON		ON		52	15	65	82	ON	ON	ON		ON	ON	130	2	107	67
			ON	ON		54	46	54	131				ON	ON	ON	131	2	112	57
ON			ON	ON		55	131	52	128	ON			ON	ON	ON	135	16	56	109
	ON		ON	ON		56	82	35	33		ON		ON	ON	ON	142	2	54	88
ON	ON		ON	ON		59	143	59	101	ON	ON		ON	ON	ON	143	59	93	33
			ON	ON		60	131	52	125			ON	ON	ON	ON	144	110	61	2
ON		ON	ON	ON		65	131	52	93	ON		ON	ON	ON	ON	146	31	67	57
	ON	ON	ON	ON		66	110	52	107		ON	ON	ON	ON	ON	148	131	52	92
ON	ON	ON	ON	ON		69	131	52	110	ON	ON	ON	ON	ON	ON	152	110	61	13

* factory setting

CONNECTION DIAGRAM



CONFORMITY TO STANDARDS

The acoustic parameters conform to the European standard DIN EN ISO 7731:
“Ergonomic – alarms for public areas and workplaces – acoustic alarms”.

The requirement for an acoustic alarm signal can be found in the harmonised standards:
 EN 60204-1 Electrical equipment of machines
 EN 60825-1 Radiation safety of laser devices, identical to IEC 825 and DIN-VDE 0837