

Sandwich valve module with solenoid valve

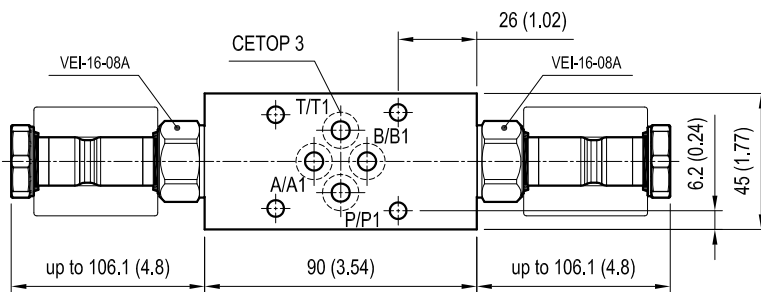
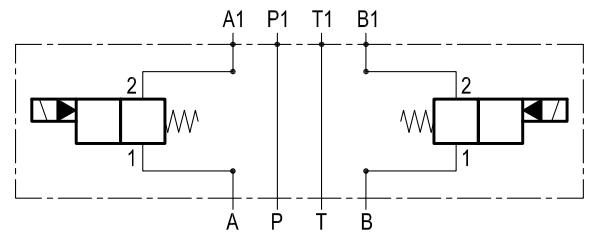
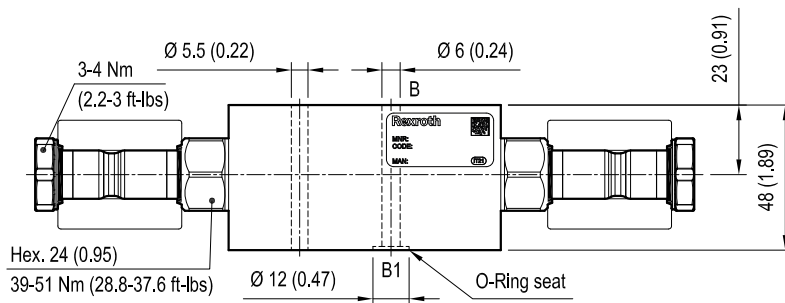
EM-VEI-16-08A-CETOP 3-A/B

OP.15 - K - 18 - 29 - X - Y

RE 18332-84

Edition: 04.2023

Replaces: 12.2016



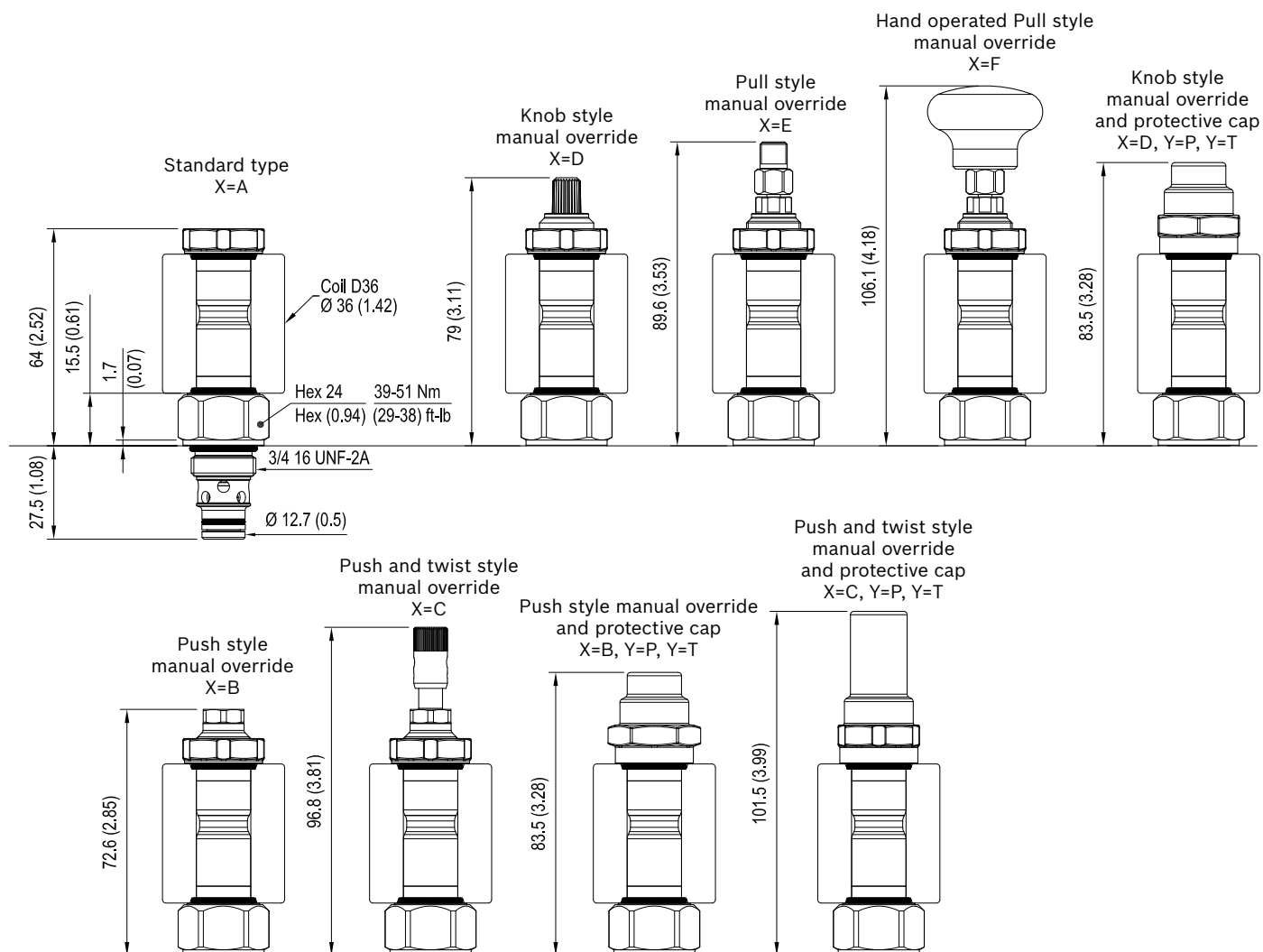
Cartridge schemes (K)

monodirectional type	bidirectional type
	05
	06
	31
	32

[mm (inches)]

Technical data

Max. flow	40 l/min (11 gpm)
Max operating pressure	210 bar (3000 psi)
Ambient temperature range	-30 to 90 °C (-22 to 194 °F)
Standard manifold in high strength aluminium. For working pressure up to 350 bar (5000 psi) and for fatigue applications with any working pressure, steel manifolds are available upon request.	
Fluids: Mineral-based or synthetics with lubricating properties at viscosities of 20 to 380 mm ² /s (cSt)	
MTTFd	150 years see RE 18350-51
Other technical data	See data sheet 18350-50



Cartridge technical data

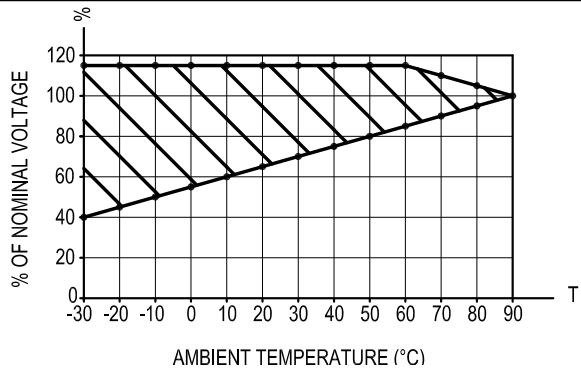
General	
Installation orientation	Unrestricted
Ambient temperature range	-30 to 90 °C (-22 to 194 °F)
Hydraulic	
Max. operating pressure	350 bar (5000 psi)
Flow range	0.5 - 40 l/min (0.1 - 11 gpm)
Max. internal leakage	5 drops/min.
Switching time	Opening ≤ 50 ms Closing ≤ 100 ms
Fluid temperature range	-20 to 80 °C (-4 to 176 °F)
Fluids: Mineral-based or synthetics with lubricating properties at viscosities of 20 to 380 mm ² /s (cSt)	
Installation torque	39 - 51 Nm (29 - 38 ft-lbs)
Recommended degree of fluid contamination	Nominal value max. 10 µm (NAS 8) ISO 4406 19/17/14
MTTFd	150 years see RE 18350-51
Cavity	CA-08A-2N see data sheet 18325-70
Other technical data	See data sheet 18350-50

Electrical	
Type of voltage	DC voltage
Coil type	D36
Supply voltage	See data sheet 18325-90
Voltage tolerance against ambient temperature	See characteristic curve
Power consumption	20 W
Type of protection	See data sheet 18325-90
Note: Coils must be ordered separately	

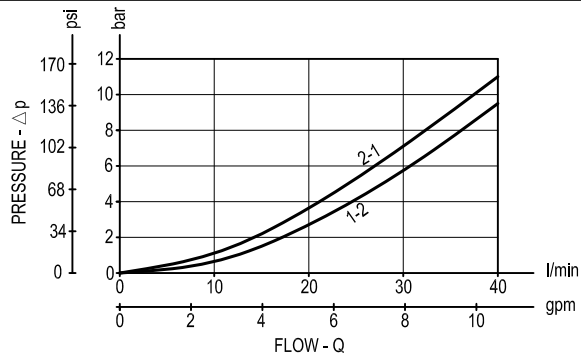
TAB. 1		Manual override options (X)					
Seal and prot. cap. (Y)		A	B	C	D	E	F
	O	K=all versions	K=06 K=32	K=06 K=32	K=05 K=31	K=05 K=31	K=05 K=31
	V	K=all versions	K=06 K=32	K=06 K=32	K=05 K=31	K=05 K=31	K=05 K=31
	P	/	K=06 K=32	K=06 K=32	K=05 K=31	/	/
	T	/	K=06 K=32	K=06 K=32	K=05 K=31	/	/

Characteristic curves

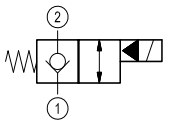
All Versions - Admissible supply voltage Vs. Ambient temperature at 100% duty cycle



All Versions



Ordering code

OP.15	K	18	29	X	Y
<div>Sandwich valve module with solenoid valve</div> <div></div>					<div>Cartridge seals and accessories options</div> <div><div>0 = With buna seal</div><div>V = With Viton seal</div><div>P = With buna seal and protective cap for override version B, C and D</div><div>T = With Viton seal and protective cap for override version B, C and D</div></div>
	05				<div>Cartridge options</div> <div><div>A = Standard</div><div>B = Push style manual override</div><div>C = Push and twist style manual override</div><div>D = Knob style manual override</div><div>E = Pull style manual override</div><div>F = Hand operated pull style manual override</div></div>
	06				
	31			Flange CETOP 3 (DOT3)	
	32		Common cavity size 08		

Note: for solutions availability (K-X-Y combinations), please refer to TAB.1 on page 2.