

Preparation of compressed air ► Maintenance units and components

3/2-directional valve, electrically operated, Series AS3-SOV

► G 3/8 - G 1/2 ► pipe connection ► ATEX optional



00133928_b

Version
Nominal flow
Nominal flow, 1 ► 2
Nominal flow, 2 ► 3
Working pressure min./max.
Medium

Medium temperature min./max.
Ambient temperature min./max.
Sealing principle
Max. particle size
Protection class,with Plug

Materials:

Housing
Front plate
Seals
Threaded bushing

Poppet valve, Can be assembled into blocks

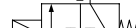
4500 l/min
4500 l/min
3200 l/min
37 psi / 145 psi
Compressed air
Neutral gases
+14 °F / +122 °F
+14 °F / +122 °F
Soft sealing
25 µm
IP65

Polyamide
Acrylonitrile butadiene styrene
Acrylonitrile Butadiene Rubber
Die cast zinc

Technical Remarks

- The pressure dew point must be at least 27 °F under ambient and medium temperature and may not exceed 37 °F.
- ATEX optional: The ATEX ID depends on the selected pilot valve.

Operating voltage			Power consumption	Switch-on power		Holding power	
DC	AC 50 Hz	AC 60 Hz	DC	AC 50 Hz	AC 60 Hz	AC 50 Hz	AC 60 Hz
			W	VA	VA	VA	VA
24 V	-	-	2	-	-	-	-
-	110 V	110 V	-	2.2	1.6	1.6	1.4
-	220 V	230 V	-	2.2	1.6	1.6	1.4

		Port	Ex-haust	Operational voltage			Qn			Electr. connection	Weight	Part No.
				DC	AC 50 Hz	AC 60 Hz		1►2	2►3			
							[Cv]				[lbs]	
	-	G 3/8 G 1/2 G 3/8 G 1/2	G 1/2	-	-	-	4.5	4.5	3.2	-	1.01	R412007264 R412007268 R412007258 R412007259

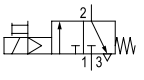

All dimensions in mm, unless specified otherwise.

Part numbers marked in bold are available from the central warehouse in Germany, see the shopping basket for more detailed information

Pneumatics catalog, online PDF, as of 2016-12-20, ©AVENTICS S.à r.l., subject to change

3/2-directional valve, electrically operated, Series AS3-SOV

► G 3/8 - G 1/2 ► pipe connection ► ATEX optional

		Port	Ex- haust	Operational voltage			Qn			Electr. connec- tion	Weight	Part No.
				DC	AC 50 Hz	AC 60 Hz		1►2	2►3			
							[Cv]				[lbs]	
		G 3/8	G 1/2	24 V	-	-	4.5	4.5	3.2	Plug ISO 15217, form C	1.01	R412007265
		G 3/8		24 V	-	-				Plug M12x1		R412007397
		G 3/8		-	110 V	110 V				Plug ISO 15217, form C		R412007266
		G 3/8		-	220 V	230 V				Plug ISO 15217, form C		R412007267
		G 1/2		24 V	-	-				Plug ISO 15217, form C		R412007269
		G 1/2		-	110 V	110 V				Plug ISO 15217, form C		R412007270
		G 1/2		-	220 V	230 V				Plug ISO 15217, form C		R412007271
		G 1/2		24 V	-	-				Plug M12x1		R412007391

Part No.	Fig.	Note
R412007264	Fig. 1	1); 2)
R412007268	Fig. 1	1); 2)
R412007258	Fig. 2	1); 3)
R412007259	Fig. 2	1); 3)
R412007265	Fig. 3	4)
R412007397	Fig. 4	
R412007266	Fig. 3	
R412007267	Fig. 3	
R412007269	Fig. 3	
R412007270	Fig. 3	
R412007271	Fig. 3	
R412007391	Fig. 4	

1) Suitable for use in Ex zones 1, 2, 21, 22

2) Basic valve without pilot valve

3) Basic valve without pilot valve, with CNOMO subbase

4) Basic valve with pilot valve

Nominal flow Qn with secondary pressure p2 = 87 psi at Δp = 14.5 psi

3/2-directional valve, electrically operated, Series AS3-SOV
► G 3/8 - G 1/2 ► pipe connection ► ATEX optional

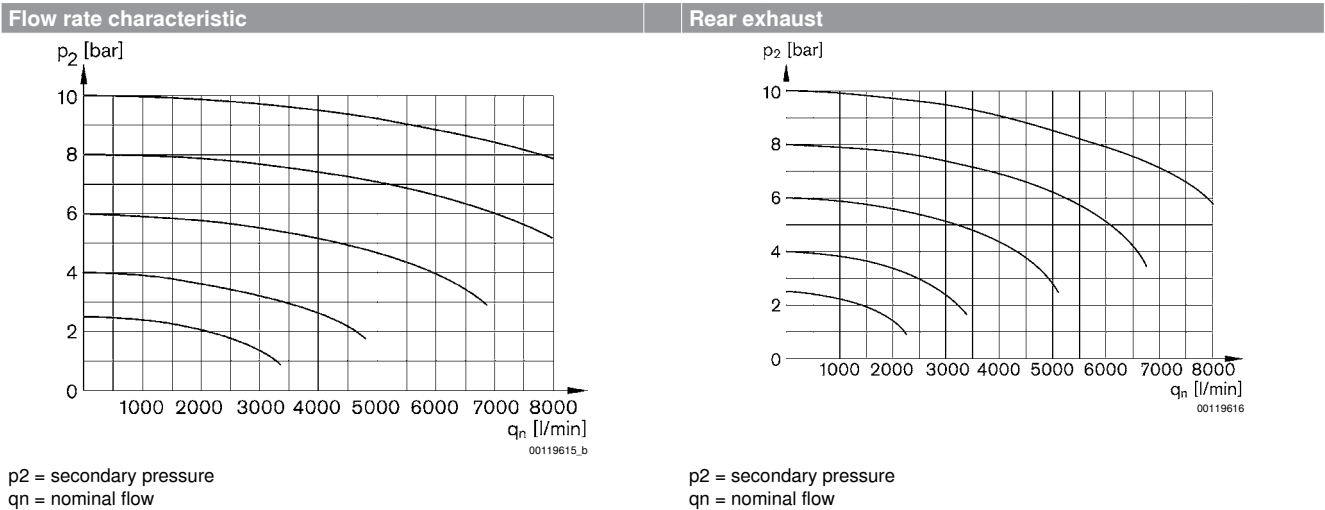
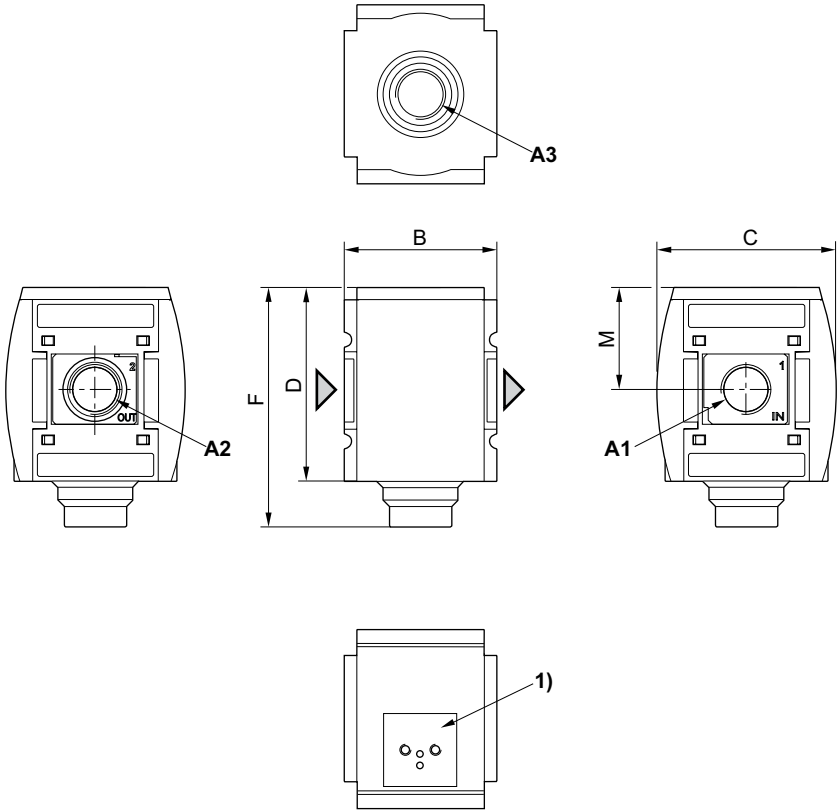


Fig. 1: 3/2-directional valve without pilot valve with porting configuration for series DO16



A1 = input
A2 = output
A3 = ventilation port
1) For pilot valve series DO16

00133976

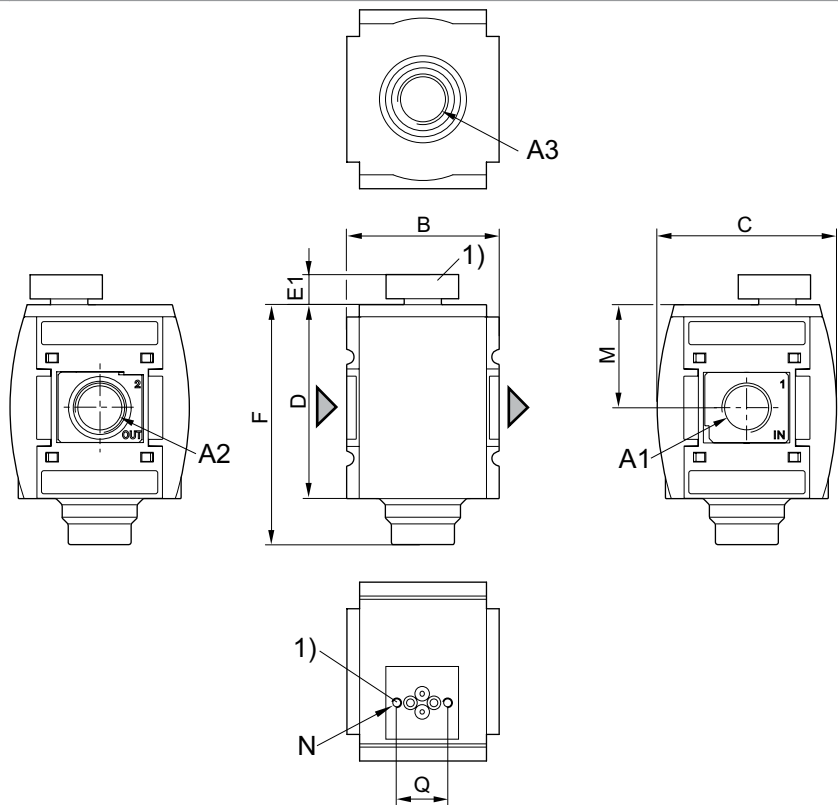
A1	A2	A3	B	C	D	F	M						
G 3/8	G 3/8	G 1/2	63	74	80	99	42.5						

3/2-directional valve, electrically operated, Series AS3-SOV

► G 3/8 - G 1/2 ► pipe connection ► ATEX optional

A1	A2	A3	B	C	D	F	M						
G 1/2	G 1/2	G 1/2	63	74	80	99	42.5						

Fig. 2: 3/2-directional valve with transition plate for pilot valve series DO30



A1 = input

A2 = output

A3 = ventilation port

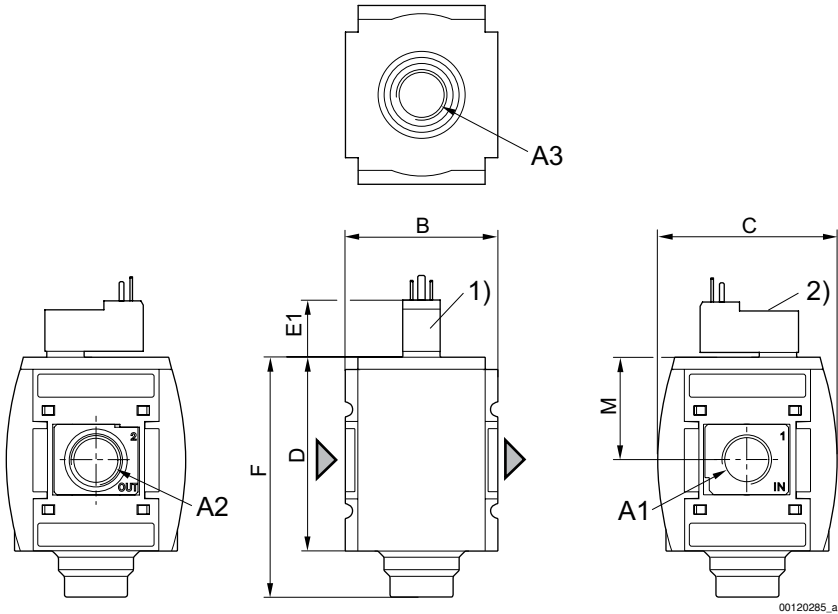
1) Transition plate with CNOMO porting configuration for pilot valve DO30

00130391

A1	A2	A3	B	C	D	E1	F	M	N	Q			
G 3/8	G 3/8	G 1/2	63	74	80	12.3	99	42.5	M4	21			
G 1/2	G 1/2	G 1/2	63	74	80	12.3	99	42.5	M4	21			

3/2-directional valve, electrically operated, Series AS3-SOV
▶ G 3/8 - G 1/2 ▶ pipe connection ▶ ATEX optional

Fig. 3: 3/2-directional valve with pilot valve and port for electrical connector

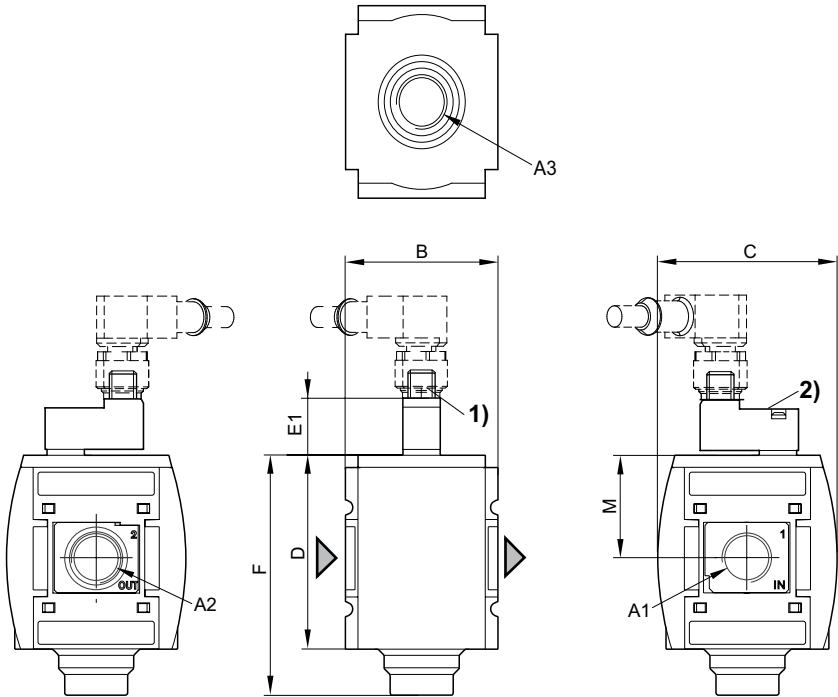


- A1 = input
A2 = output
A3 = ventilation port
1) Port for electrical connector according to ISO 15217 (form C)
2) Manual override

A1	A2	A3	B	C	D	E1	F	M					
G 3/8	G 3/8	G 1/2	63	74	80	23.2	99	42.5					
G 1/2	G 1/2	G 1/2	63	74	80	23.2	99	42.5					

3/2-directional valve, electrically operated, Series AS3-SOV
▶ G 3/8 - G 1/2 ▶ pipe connection ▶ ATEX optional

Fig. 4: 3/2-directional valve with pilot valve and electrical connector for plug

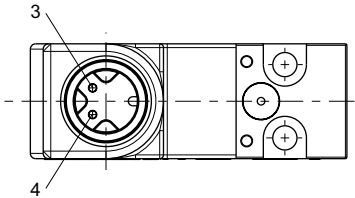


00127879

- A1 = input
A2 = output
A3 = ventilation port
1) plug M12
2) Manual override

A1	A2	A3	B	C	D	E1	F	M					
G 3/8	G 3/8	G 1/2	63	74	80	23.2	99	42.5					
G 1/2	G 1/2	G 1/2	63	74	80	23.2	99	42.5					

Pin assignment M12x1



20438

- 3: +/-
4: +/-