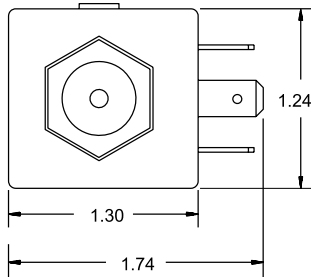




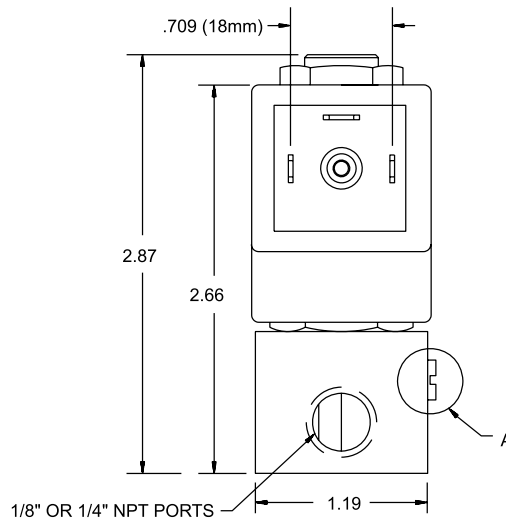
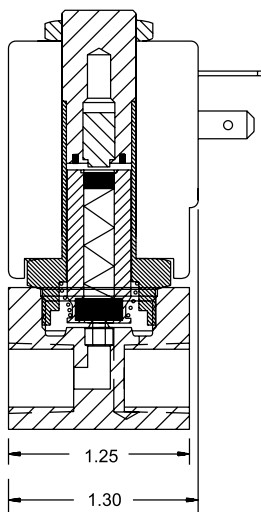
The Series 4200 solenoid valves are larger solenoid valves with an orifice range from 0.8 to 6.0mm. These control valves are offered standard in 1/8" and 1/4" NPT. A manual override is standard on most versions with a completely environment resistant encapsulated coil. Electrical connection is DIN 43650 Form A, a highly versatile quick-connect design. This valve features an all stainless steel (430FR and 316 SS) operator and has bodies available in Zamak, stainless and brass. Functions include normally closed, normally open, mixing and diverting.

## Dimensional Data

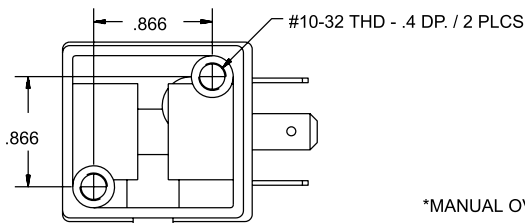
ALL DIMENSIONS ARE IN INCHES UNLESS OTHERWISE NOTED



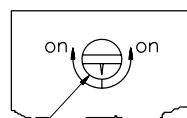
SHOWN AS 2-WAY



1/8" OR 1/4" NPT PORTS

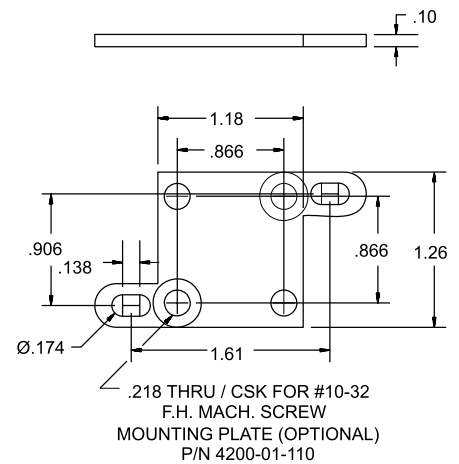


DETAIL A



\*MANUAL OVERRIDE

VALVE BASE





# Series 4200

Air-Sol 2-Way & 3-Way  
Solenoid Valves

## Technical Data

<b>Function:</b>	2 or 3-way, normally open or normally closed, direct acting.
<b>Port Size:</b>	1/8" or 1/4" NPT
<b>Orifice Size:</b>	0.8mm to 6.0mm
<b>Pressure Range:</b>	Vacuum to 350 psi (depending on function and orifice size)
<b>Flow Factors:</b>	Up to .72 Cv
<b>Temp. Range:</b>	(Fluid max. 90°C) Ambient -10°C to +50°C
<b>Response Time:</b>	16 to 40 ms complete cycle
<b>Materials:</b>	Operator: AISI 300 and 400 Series Stainless Steel Shading Ring: Copper standard (Silver available on request) Orifice: Brass (Stainless available on request) Seals: Viton standard (Optional seal materials include Nitrile, EPDM, Aflas and Neoprene. Contact factory for a complete list and reference numbers.) Valve Bodies: Aluminum (Zamak), Brass or Stainless Steel
<b>Manual Override:</b>	Standard up to 350 psi (not available with 6 mm orifice or higher pressures)
<b>Media:</b>	Air, gases, water, oil, etc.
<b>Mounting:</b>	Any position by 10-32 screw on bottom or optional mounting plate
<b>Coil Data:</b>	Glass filled nylon encapsulation (Class F, continuous duty) 10 watt VDC, 8 watt VAC. Volts: 6, 12, 24 VDC 24/60 Hz, 120/60 Hz, 220/50 Hz, 240/60 Hz VAC Voltage tolerance: +/- 10%

## ORIFICE SIZE / VOLTAGE

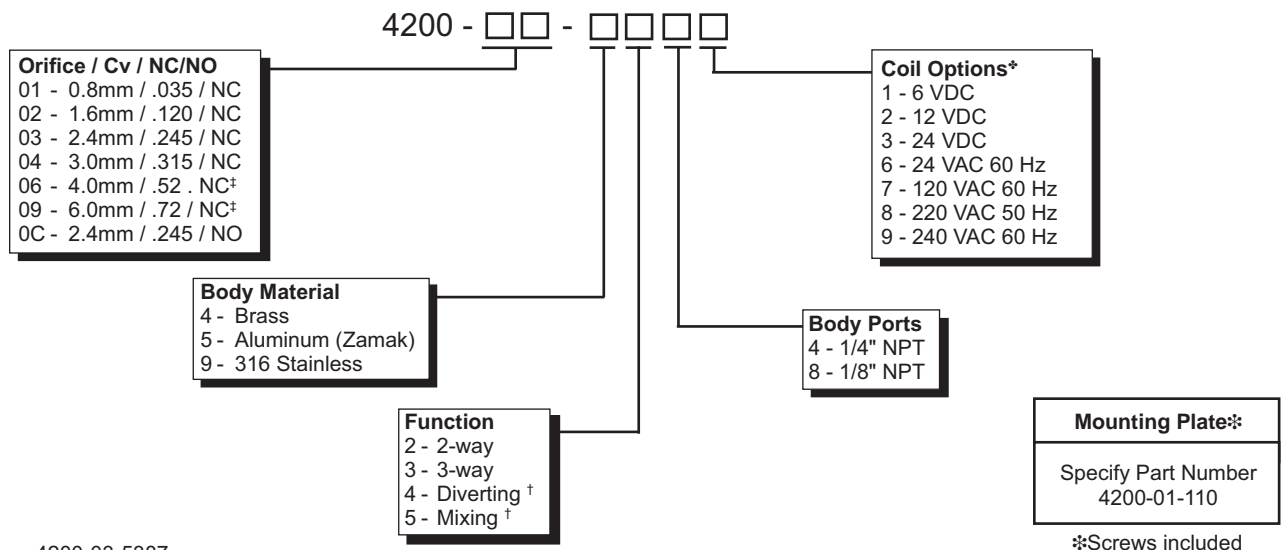
FUNCTION	0.8 mm		1.6 mm		2.4 mm		3.0 mm		4.0 mm		6.0 mm	
	AC	DC	AC	DC	AC	DC	AC	DC	AC	DC	AC	DC
	2/2 NC	350	350	350	350	225	270	150	100	80	70	55
2/2 NO	350	345	255	225	150	120	90	82	N/A	N/A	N/A	N/A
3/2 NC	350	350	255	225	150	120	90	82	60	50	30	20
3/2 NO	350	345	255	225	150	120	105	90	N/A	N/A	N/A	N/A
3/2 DIV	N/A	N/A	N/A	N/A	150	120	85	80	N/A	60	N/A	N/A
3/2 MIX	N/A	250	N/A	150	90	90	N/A	40	N/A	N/A	N/A	N/A

## MAX. PRESSURE RANGE (psi)



Consult factory for available versions  
recognized under the Component  
Program of Underwriters Laboratories, Inc.

## How To Order



Order Example: 4200-03-5387  
Series 4200, 2.4mm orifice, .245 Cv, normally closed,  
Aluminum, 3-way, 1/8" NPT, 120 VAC 60 Hz

<sup>†</sup> Standard pressure ratings of orifices do not apply for these functions. Please contact factory for details.

<sup>‡</sup> Larger orifice sizes not available in all body materials. Not available in all configurations.

# SPARTAN SCIENTIFIC